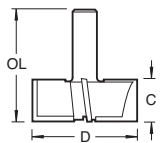


# MILLING TOOLS **TCT**

**TUNGSTEN  
CARBIDE  
TIPPED**

## LARGE TENON

- Four fluted for a clean finish.
- Two down-shear blades for the shoulder and two up-shear for the face of the tenon.
- For abrasive materials, timber and manmade board.
- Improved finish on interlocking grain.



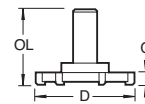
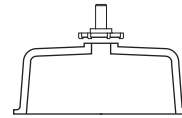
D mm	C mm	OL mm	Product Ref.	Shank Dia 1/2"
50.0	20.0	68.0	<b>37/12</b>	£91.73



## SIX WING TRIMMER

- For trimming and face milling of timber.
- Ideal for face milling of solid surface material, including Corian® and similar luxury solid surface material.

Face milling to provide a flat surface for waste fitting.

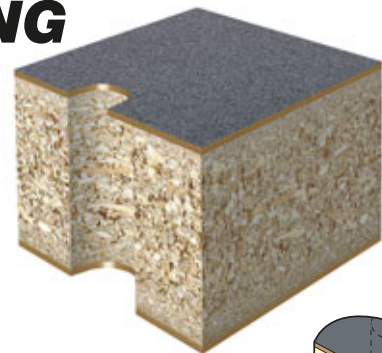
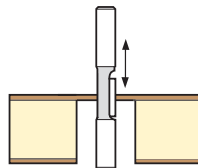


D mm	C mm	OL mm	Product Ref.	Shank Dia 1/2"
52.3	6.5	83.0	<b>90/22</b>	£72.24

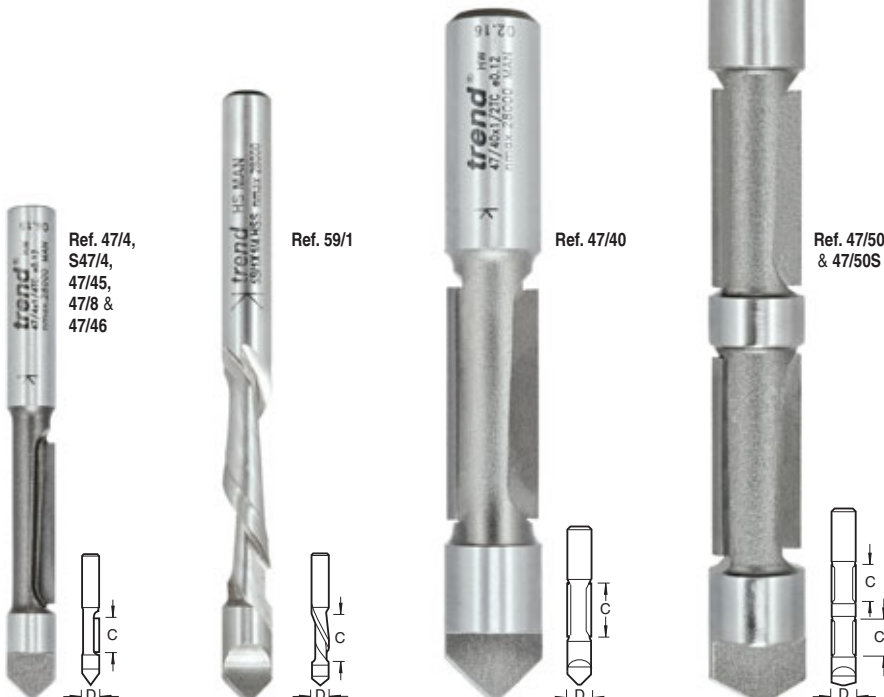
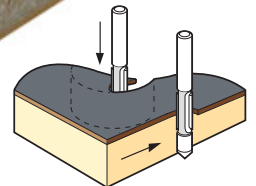
# CARAVAN INDUSTRY TOOLING

## GUIDED PIERCE & TRIM

- Combination pierce and trim cutters.
- Pierce and cut out apertures in laminate worktops.
- Using nose of the cutter as a guide.
- Ref. S47/4 is made from Solid Carbide for long life.
- Refs. 47/50, 47/50S and 47/42 will trim bottom and top laminate simultaneously.
- Refs. 47/50S is specially designed for the caravan building industry, used for cutting apertures in windows, doors and the floor pan.
- Ref. 59/1 is a single fluted spiral, specifically suited for aluminium panels in caravan manufacture.



Double trim



### TCT SINGLE FLUTE

D mm	C mm	Product Ref.	Shank Diameter 1/4"	Shank Diameter 3/8"
6.3	18.0	<b>47/4</b>	£23.69	-
9.5	25.0	<b>47/45</b>	-	£29.70 +

### TCT TWO FLUTE

D mm	C mm	Product Ref.	Shank Diameter 1/2"
12.7	30.0	<b>47/40</b>	£47.27

### TCT DOUBLE TWO FLUTE

D mm	C mm	C2 mm	Product Ref.	Shank Diameter 1/2"
12.7	22.5	22.5	<b>47/50S</b>	£59.14
12.7	24.0	24.0	<b>47/50</b>	£59.14

### STC SINGLE FLUTE

D mm	C mm	Product Ref.	Shank Diameter 1/4"
6.3	22.0	<b>S47/4</b>	£33.34

### HSS SINGLE FLUTE SPIRAL

D mm	C mm	Product Ref.	Shank Diameter 1/4"
6.3	19.1	<b>59/1</b>	£35.48

+ While stocks last

! For stationary machines at max. recommended speeds as indicated.