

JIGS & ACCESSORIES

Espagnolette Routing Jig A



This jig enables any 1/2" capacity router to rout the 12mm mortise to accept an Espagnolette lock. Constructed from 10mm solid laminate with integral steel clamp. It clamps to the sash and repeated passes are taken to reach the depth required. A 30mm guide bush and 12mm cutter are required.

Product Ref. IT/MWS/JIG/A



Trickle Vent Routing Jig B



This jig enables any 1/2" capacity router to rout the 12mm slot to accept the Trickle Vent. Constructed from 10mm solid laminate with integral steel clamp. It clamps to the head and repeated passes are taken to reach the depth required. A 30mm guide bush and 12mm cutter are required.

Product Ref. IT/MWS/JIG/B

SBXS Pulley Wheel Jig C



This jig enables any 1/2" capacity router to rout out the hole and face plate recess for sliding box sash pulley wheels. Constructed from 10mm solid laminate with integral steel clamp. It clamps to the pulley stile and repeated passes are taken to reach the depth required. The jig comes complete with the Square Pulley Template. The Round Pulley Template is available as an optional accessory. A 30mm guide bush and 12mm cutter are required.

Product Ref. IT/MWS/JIG/C



Square Pulley Template (included in kit)

Product Ref. IT/MWS/JIG/C1



Round Pulley Template (sold as accessory)

Product Ref. IT/MWS/JIG/C2

SBXS Weight Pocket Jig D

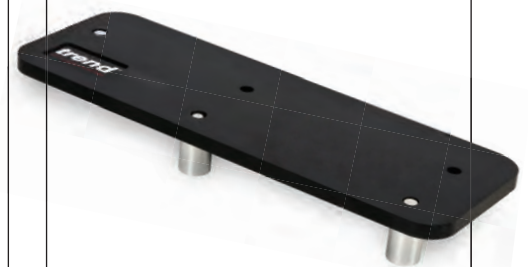


This jig enables any 1/2" capacity router to rout out the pocket in the sliding box sash pulley stiles. Constructed from 10mm solid laminate with integral steel clamp. It clamps to the pulley stile and repeated passes are taken to reach the depth required. The same jig will also rout out a rebate for the pocket to locate into. A 30mm guide bush and 12mm cutter are required.

Product Ref. IT/MWS/JIG/D



Spelch Block Hole Location Jig E



This jig enables any drill to machine the holes in a spelch block for use on a spindle moulder when tenoning. The holes are correctly spaced to suit the M8 holes on the TSM100 tenoning fence and give the correct timber depth to prevent breakout when producing slots and tenons.

Product Ref. IT/MWS/JIG/E



T10E Router



The T10E 1/2" router features a 2000 watt motor with electronic full wave variable speed and soft start, two column precision base, spindle lock for easy cutter changes, micro-adjuster parallel side-fence, precision one-piece multi-slit collet, 3-position revolving depth stop for fast settings and an adjustable inner plate for guide bush accuracy. Includes a 30mm steel guide bush, which is required for the jigs.

Product Ref. T10EK

Unibase



The Unibase enables routers with non-standard guide bush fittings to accept the range of Trend guide bushes. It will fit directly to most routers.

Product Ref. UNIBASE

30mm Guide Bush



Suitable for use with the Unibase and all jigs shown on page 57.

Product Ref. GB30

12mm Router Cutter



TCT 12mm diameter cutter with 50mm cut length and 1/2" shank. For use with the Espagnolette and Trickle Vent jigs.

Product Ref. 3/73DX1/2TC

Hand Mitre Shears



These chrome vanadium shears give accurate mitre cuts of gaskets and are ideal for use in a production environment.

Product Ref. HM/SHEAR

Trend Snappy Drill Bit Guide Set



A set of self-centring drills for the accurate drilling of pilot holes for hinges to ensure exact alignment. It can be easily dismantled for cleaning and is supplied with a HSS drill bit. Tools have Trend Snappy Quick Change Shank.

Please request our main catalogue Product Ref. CAT/1 for full information. See back cover.

Product Ref. SNAP/DBG/SET

Corner Chisel



Squares up rounded corners in one operation. Suitable for use with SBXS Pulley Wheel Jig C with the Square Pulley Template.

Product Ref. C/CHISEL

Tool & Bit Cleaner



An industrial grade cleaner to remove pitch and resin build-up from the MWS tools and spacers. Increases tool life and is biodegradable, earth and human friendly. Supplied in 532ml pump action spray bottle.

Product Ref. CLEAN/500

Tooling Stand

Portable tooling stand for storing and locating MWS tools and spacers next to your spindle moulder.

- Constructed from 15mm thick birch plywood and designed to take a maximum of 58 tools and spacers.
- Stand is supplied flat packed in two parts with castors to enable tools to be situated close to the spindle moulder.
- Approximately 1,800mm high x 700mm wide x 700mm deep.
- Inner storage and shelf compartments.

Product Ref. IT/MWS/STAND



DRILLING UNIT FOR ESPAGNOLETTE HANDLE

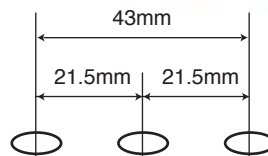
To drill three holes in wooden window frames for espagnolette handles.

- Drills three holes to accept espagnolette handles for windows.
- For use with multibore drills with 10mm diameter shank.
- Use with a corded drill, drill stand or pillar drill.
- Centre chuck is right hand rotation and the two outside chucks are left hand rotation.



Technical Specification:

Size	140mm x 212mm x 101mm
Drill Chuck Capacity (minimum)	9.5mm
Drill Centres	21.5mm
Drill Shank Diameter	10mm
Rotation	2 x left hand, 1 x right hand
Maximum Drill Lengths	57.5mm
Maximum Drill Diameter (3 tools)	10mm/25mm/10mm
Maximum Speed (RPM)	1,800
Weight	2.7kg



Description

Espagnolette Handle Drilling Jig
(Drill bits not included)

Product Ref

IT/MWS/TRI/A

Dia.

Dia.	Product Ref. RH	Product Ref. LH
3mm	IT/DSC30R + IT/203 952 7	-
4mm	IT/201 281 7	IT/201 282 7
5mm	IT/201 001 7	IT/201 004 7
8mm	-	IT/201 016 7
10mm	IT/201 019 7	IT/201 022 7
11mm	IT/201 023 7	IT/201 024 7
12mm	IT/201 025 7	IT/201 028 7
25mm	IT/203 107 7	-
26mm	IT/203 113 7	-
35mm	IT/203 125 7	-
40mm	IT/203 131 7	-

