

MAINTENANCE

Please use only Trend original spare parts and accessories.

The accessory has been designed to operate over a long period of time, with the minimum amount of maintenance. Continual satisfactory operation depends upon proper tool care and regular cleaning.

Cleaning

- Regularly clean jig with a soft cloth.
- Do not use a corrosive cleaning solutions.

Lubrication

- Your accessory requires no additional lubrication.

Storage

- Always return product to its packaging after use, or hang on a wall hook

ENVIRONMENTAL PROTECTION

Recycle raw materials instead of disposing as waste.

Packaging should be sorted for environmental-friendly recycling. The product and its accessories at the end of its life should be sorted for environmental-friendly recycling.

GUARANTEE

All Trend products are guaranteed against any defects in either workmanship or material, except products that have been damaged due to improper use or maintenance.

Trend Machinery & Cutting Tools Ltd.
Odhams Trading Estate St Albans Road
Watford WD24 7TR England
Tel: 0044(0)1923 249911
technical@trendm.co.uk
www.trend-uk.com

trend[®]
routing technology

Safety Points

1. Disconnect power tool and attachment from power supply when not in use, before servicing, when making adjustments and when changing accessories such as cutters. Ensure switch is in "off" position. Always ensure cutter has stopped rotating.
2. Read and understand instructions supplied with power tool, attachment and cutter.
3. Current Personal Protective Equipment (PPE) for eye, ear and respiratory protection must be worn. Keep hands, hair and clothes clear of the cutter.
4. Before each use check cutter is sharp and free from damage. Do not use if cutter is dull, broken or cracked or if any damage is noticeable or suspected.
5. The maximum speed (nmax) marked on tool or in instructions or on packaging shall not be exceeded. Where stated, the speed range should be adhered to.
6. Insert the shank into the router collet at least all the way to the marked line indicated on the shank. This ensures at least 3/4 of shank length is held in collet. Ensure clamping surfaces are clean.
7. Check all fixing and fastening nuts, bolts and screws on power tool, attachment and cutting tools are correctly assembled, tight and to correct torque setting before use.
8. Ensure all visors, guards and dust extraction is fitted.
9. The direction of routing must always be opposite to the cutter's direction of rotation.
10. Do not switch power tool on with the cutter touching the workpiece.
11. Trial cuts should be made in waste material before starting any project.
12. Repair of tools is only allowed according to tool manufacturers instructions.
13. Do not take deep cuts in one pass, take several shallow passes to reduce the side load applied to the cutter.

Please see www.trend-uk.com/safety for more safety advice.



Our policy of continuous improvements mean that specifications may change without notice. Trend Machinery & Cutting Tools Ltd. cannot be held liable for any material rendered unusable, or for any form of consequential loss.

© Copyright Trend 2013, 2016. E&OE.
© All trademarks acknowledged.



ROUTER T-SQUARE

Can be used as a straight guide for routing housings, squaring & trimming boards and jig setting.

- Long 1000mm x 8mm thick blade.
- Ideal as a general workshop square for marking and setting out.
- Made from hard wearing solid phenolic resin with hanging hole.
- Butt 16mm thick with factory set squaring support for user to set blade squareness. Squareness tolerance 0.5mm over 1 metre.
- False fence fitting capacity.

Size: 1060mm x 300mm x 16mm

FOR GUIDING
THE ROUTER



trend[®]
routing technology

ROUTER T-SQUARE REF. RTS/1000

Thank you for purchasing this Trend product which should give lasting performance if used in accordance with these instructions.

The following symbols are used throughout these instructions.



Denotes risk of personal injury, loss of life or damage to the tool in case of non-observance of the instructions.



Refer to the instruction manual of your power tool.

This unit must not be put into service until it has been established that the power tool to be connected to this unit is in compliance with 2006/42/EC (identified by the CE marking on the power tool).

INTENDED USE

The accessory is intended to be used with a plunge router with suitable router cutter fitted to allow the routing of housings, squaring and trimming of wood and wood based material.

Working length max. : 970mm
Weight: 1.3 kg

SAFETY

Please read and understand these safety instructions, as well as the power tool instructions, before use.

PLEASE KEEP THESE INSTRUCTIONS IN A SAFE PLACE.

The attention of UK users is drawn to The Provision and Use of Work Equipment Regulations 1998, and any subsequent amendments.

Users should also read the HSE/HSC Safe Use of Woodworking Machinery Approved Code of practice and Guidance Document and any amendments.

Users must be competent in using woodworking equipment before using our products.

Consider working environment before using tools.

Ensure working position is comfortable and component is clamped securely.

Please keep children and visitors away from tools and work area. All power tools will have a residual risk, so must be operated with caution.

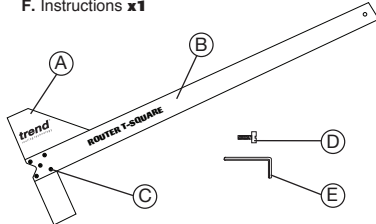
Only use tooling that meets EN847-1/2 safety standard and any amendments.

ITEMS REQUIRED

- Plunge router.
- 100mm throat clamps x2.
- Slotted screwdriver.
- Hand tools.

ITEMS ENCLOSED & DESCRIPTION OF PARTS

- A. Butt with triangle squaring support **x1**
- B. Blade **x1**
- C. Machine screw dome socket M5 x 20mm **x5**
- D. Machine screw nylon slotted M5 x 20mm **x2**
- E. Hex key **x1**
- F. Instructions **x1**



The material being cut along with the template/jig will need to be supported and clamped securely. Ensure that the router base will not foul the clamps.



Keep proper footing and balance at all times.



As templates are made of clear plastic please be aware of possible glare.



Regularly check fixing screws are tight.



Before use ensure cutter will not foul false cheek fixing screw.

OPERATION

Marking Out & Clamping

Before use, remove protective film from the reverse of the accessory as it is supplied flat packed.

To fit blade to the butt, first unscrew the five machine screws using the 3mm A/F hex key supplied.

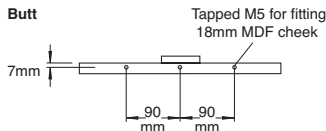
Place the blade with the text uppermost onto the butt and against the triangular squaring support, line up the holes and then screw the five machine screws into the inserts.

Push the blade tight against squaring support and tighten the machines screws with the hex key.

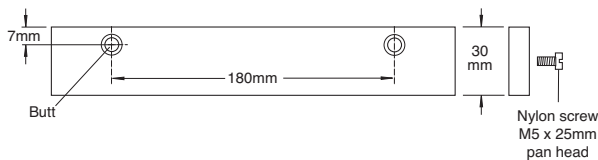
Check squareness with a try or roofing square. Adjust if necessary.

A false cheek should be made and bolted onto the butt. The false cheek can be made from 18mm MDF or similar material. The cheek will need two counterbored holes to accept the nylon machine screws supplied. This false cheek can be routed into.

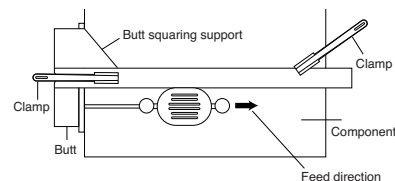
Suggested counterbore size 12.7mm with 6.35mm hole. Depth of counterbore 6mm. Ref. CB12-14TC.



False Cheek



The accessory should be used with two 100mm throat clamps. Ensure clamps do not foul path of router. A notch is positioned in the butt to allow the clamp to tighten onto the accessory and component.



After use, keep accessory assembled and store carefully.



Ensure all fixing screws are tightened.



Ensure component is clamped securely.

ACCESSORIES

Please use only Trend original accessories.

SPARE PARTS

Please use only Trend original spare parts.

Item	Qty.	Desc.	Ref. (1 off)
D	1	Machine Screw Nylon M5 x 20mm Slotted	WP-SCW/85
E	1	Hex Key	WP-AP/03