



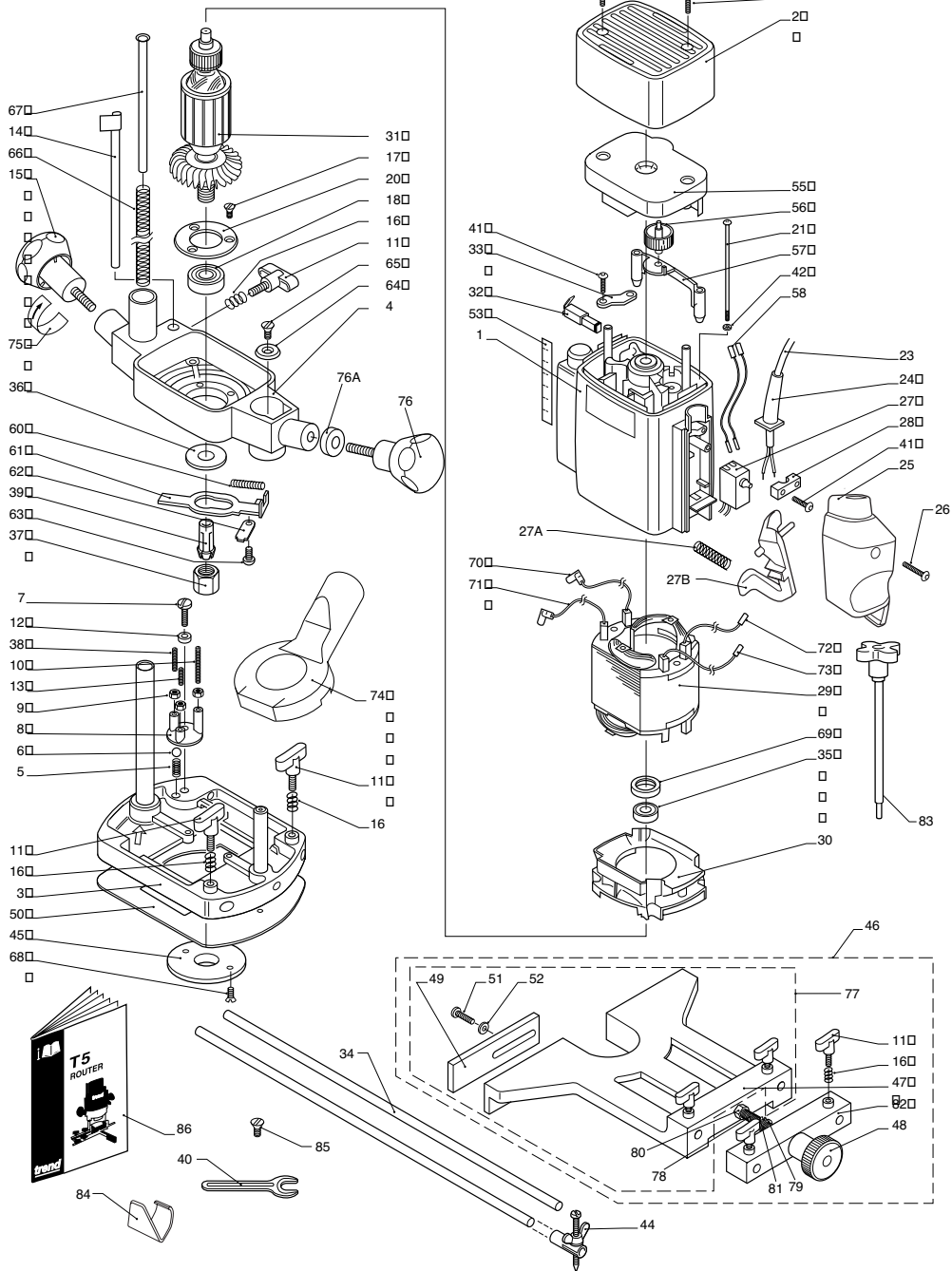
T5 MK2



Addendum For T5 MK2

T5 MK2 SPARE PARTS DIAGRAM

v1.0 9/2002



Addendum For T5 MK2

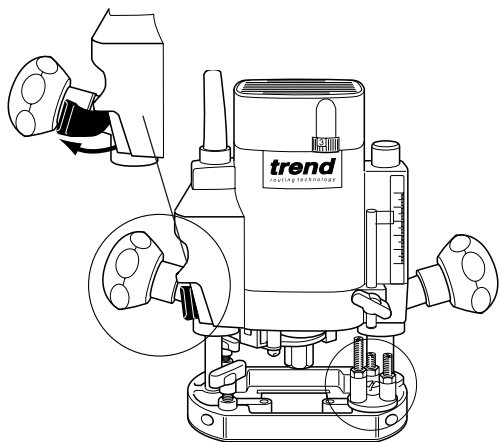
T5 MK2

The T5 MK2 router is fitted with an easy reach deadman's switch.

Included with the machine is the Ref. T5MK2/LOCK which allows the deadman's switch to be locked in the on position when the router is fixed to a stand or table and used in conjunction with a No-Volt Release Switch.

Switching On & Off

- Pull lever towards knob to turn router on. To switch off router release lever.
- The T5 has a soft start feature when switched on and will take 2-3 seconds to reach full running speed.



Fitting the T5MK2/LOCK

- Remove plug from the No-Volt Release Switch.
- Pull lever towards knob and clip lock over the knob base ensuring the front of the lock is holding the lever.
- To remove simply pull off lock.



IMPORTANT!

The T5MK2/LOCK must not be used without a No-Volt Release Switch.



IMPORTANT!

Make sure the machine is switched off before connecting it to the power supply or making any adjustments.

TECHNICAL DATA

Voltage UK & Ireland	240V
Ampage	3.8A
Power input	850W
No load speed	9,000-26,000 min ⁻¹
Router carriage	2 columns
Router carriage stroke	50mm
Revolver depth stop	3-step, turret stop adjustment with graduation
Collet size UK & Eire	1/4 inch (6.35mm), and 8mm
Cutter diameter, max	40mm
Weight	2.7kg
Fuse UK & Eire	230V 13A in plug

EC DECLARATION OF CONFORMITY



Trend Machinery & Cutting Tools Ltd.

Plunge Router T5 ϵ MK2

We declare under our sole responsibility that this product is in conformity with the following standards of standardised documents:

EN 50144, EN 55014, EN 61000, in accordance with the directive 98/37/EC and following modifications 73/23/EEC, 93/68/EEC, 89/336/EEC.

Level of sound pressure according to 86/188/EEC & 98/37/EC, measured according to EN 50144:

Lpa (sound pressure) 81 dB(A)₁
 Lwa (acoustic power) 94 dB(A)₂



INFORMATION ON NOISE/VIBRATION

The noise level when working can exceed 85 dB(A).

Wear ear protection!

Weighted root mean square acceleration value according to EN 50144:
 7.1 m/s² (hand arm method)

Stephen Phillips

Managing Director
 Stephen Phillips

trend[®]
 routing technology

Trend Machinery & Cutting Tools Ltd.
 01/09/2002

Addendum For T5 MK2

T5 MK2 - SPARE PARTS LIST			v1.0 9/2002
No.	Qty.	Desc.	Ref.
1	1	Field Housing	WP-T5/001
2	1	Top Vent Housing	WP-T5E/002
3	1	Base Complete	WP-T5/003
4	1	Lower Bearing Housing	WP-T5/004
5	1	Spring For Revolving Guide	WP-T5/005
6	1	Ball For Revolving Guide	WP-T5/006
7	1	Machine Screw Pan M6 x 20mm Slot	WP-SCW/49
8	1	Revolving Guide	WP-T5/008
9	3	Nut Hex M5	WP-NUT/05
10	1	Threaded Pin M5 x 30mm Revolving Guide	WP-T5/010
11	7	Thumb Knob Male M6 x 12mm	WP-T5/011
12	1	Spacer Revolving Guide	WP-T5/012
13	1	Threaded Pin M5 x 20mm	WP-T5/013
14	1	Depth Stop	WP-T5/014
15	1	Plunge Knob Grip Knob	WP-T5/015
16	7	Spring 12mm For Thumb Knob	WP-T5/016
17	3	Machine Screw Csk M4 x 10mm Pozi	WP-SCW/48
18	1	Bottom Bearing 35mm x 17mm x 10mm 6003	WP-T5/018
19	2	Screw Self Tapping 4mm x 20mm Torx	WP-T5/019
20	1	Bearing Cover For Top Bearing	WP-T5/020
21	2	Machine Screw Cheese M4 x 89/45mm Pozi	WP-T5/021
23	1	Cable 2 Core With Plug 240V UK	WP-T5/023
24	1	Cable Guard	WP-T5/024
25	1	Switch Cover T5MK2	WP-T5/2/025
26	1	Screw Self Tapping 3.5mm x 22mm Torx	WP-T5/026
27	1	Switch 240V T5MK2	WP-T5E/2/027
27A	1	Switch Lever Spring T5MK2	WP-T5E/2/027A
27B	1	Switch Lever T5MK2	WP-T5E/2/027B
28	1	Cable Clamp	WP-T5/028
29	1	Field Complete 240V	WP-T5E/029
30	1	Deflector	WP-T5/030
31	1	Armature 240V With Fan	WP-T5E/031
32	1	Carbon & Holder 240V-2 Sets	WP-T5E/032
33	2	Brush Clamp	WP-T5/033
34	1	Guide Rods 8mm x 300mm (Pair)	ROD/8x300
35	1	Top Bearing 8mm x 22mm x 7mm 6082Z	WP-T5/035
36	1	Slotted Round Nut	WP-T5/036
37	1	Collet Nut	CLT/NUT/T5
38	1	Threaded Pin M5 x 40mm Revolving Guide	WP-T5/038
39	1	Collet 6.35mm	CLT/T5/635
	1	Collet 8.0mm	CLT/T5/8
40	1	Spanner 17mm	SPAN/17
41	6	Screw Self Tapping 4mm x 16mm Torx	WP-T5/041
42	2	Locking Washer B4	WP-T5/042
44	1	Beam Trammel For 8mm Rod	BEAM/005

Addendum For T5 MK2

T5 MK2 - SPARE PARTS LIST			v1.0 9/2002
No.	Qty.	Desc.	Ref.
45	1	Guide Bush 20mm Diameter	GB20/B
46	0	Parallel Side-Fence Complete With Micro Adjuster	WP-T5/046
47	1	Parallel Side-Fence Casting	WP-T5/047
48	1	Micro Adjuster Knurled Knob	WP-T5/048
49	1	Side-Fence Cheeks (Set)	WP-T5/049
50	1	Phenolic Base Plate Slider	WP-T5/050
51	4	Machine Screw Cheese M5 x 10mm Slot	WP-SCW/50
52	4	Washer 5.3mm x 10mm x 1mm	WP-T5/052
53	1	Scale	WP-T5/053
55	1	Speed Control Circuit Board 240V	WP-T5E/055
56	1	Speed Control Dial	WP-T5E/056
57	1	Insertion Socket	WP-T5/057
58	2	Conductor Lead Switch to Speed Control (Blue x 155mm)	WP-T5/058
60	1	Spring For Spindle Lock	WP-T5/060
61	1	Spindle Lock Body	WP-T5/061
62	1	Spindle Lock Plate	WP-T5/062
63	1	Screw Self Tapping 4mm x 8mm Torx	WP-T5/063
64	1	Washer 20mm x 8mm x 2mm Csk For Column	WP-T5/064
65	1	Machine Screw Csk M5 x 10mm Slot	WP-T5/065
66	1	Plunge Column Spring	WP-T5/066
67	1	Brass Ferrule For Spring	WP-T5/067
68	2	Machine Screw Csk M5 x 10mm Slot	WP-SCW/13
69	1	Rubber Sleeve	WP-T5/069
70	1	Lead Field to Speed Control (Red x 90mm)	WP-T5/070
71	1	Lead Field to Speed Control (Red x 120mm)	WP-T5/071
72	1	Lead Brush to Field (Blue x 90mm)	WP-T5/072
73	1	Lead Brush to Field (Blue x 130mm)	WP-T5/073
74	1	Dust Extraction Spout	WP-T5/074
75	1	Grip Knob Direction Arrow	WP-T5/075
76	1	Fixed Grip Knob	WP-T5/076
76A	1	Fixed Grip Knob Spacer T5MK2	WP-T5/076A
77	0	Sidefence Complete Without Micro Adjuster	WP-T5/077
78	1	Sidefence Stud M8 x 100mm	WP-T5/078
79	1	Sidefence Washer 24mm x 12mm x 1.6mm	WP-T5/079
80	1	Sidefence Half Nut Hex M8	WP-T5/080
81	1	Sidefence Circlip 12mm	WP-T5/081
82	1	Sidefence Micro Adjuster Casting	WP-T5/082
83	1	Fine Height Adjuster	FHA/001
84	1	Trigger Lock T5MK2	T5MK2/LOCK
85	3	Machine Screw Csk M6 x 16mm Slot	WP-SCW/26
86	1	Manual	MANU/T5MK2