



**Pushblock
Workholder
PUSHBLOCK/4**

Please
read carefully
before use

**PUSHBLOCK
WORKHOLDER/COPING SLED
REF. PUSHBLOCK/4**

Thank you for purchasing this Trend product which should give lasting performance if used in accordance with these instructions.

The following symbols are used throughout these instructions.



Denotes risk of personal injury, loss of life or damage to the tool in case of non-observance of the instructions.



Refer to the instruction manual of your power tool.

This unit must not be put into service until it has been established that the power tool to be connected to this unit is in compliance with 98/37/EC (identified by the CE marking on the power tool).

INTENDED USE

This accessory is intended to be used with a fixed head router either held inverted or overhead, so that a component can be held securely whilst routing the end grain of timber and timber based material.

Component	Min	Max
Thickness	15mm	30mm
Width	25mm	100mm
Length	200mm	500mm

SAFETY

Please read and understand the safety points at the end of this instruction as well as the power tool instructions before use.

PLEASE KEEP THESE INSTRUCTIONS IN A SAFE PLACE.

The attention of UK users is drawn to The Provision and Use of Work Equipment Regulations 1998, and any subsequent amendments.

Users should also read the HSE/HSC Safe Use of Woodworking Machinery Approved Code of Practice and Guidance Document and any amendments.

Users must be competent in using woodworking equipment before using our products.

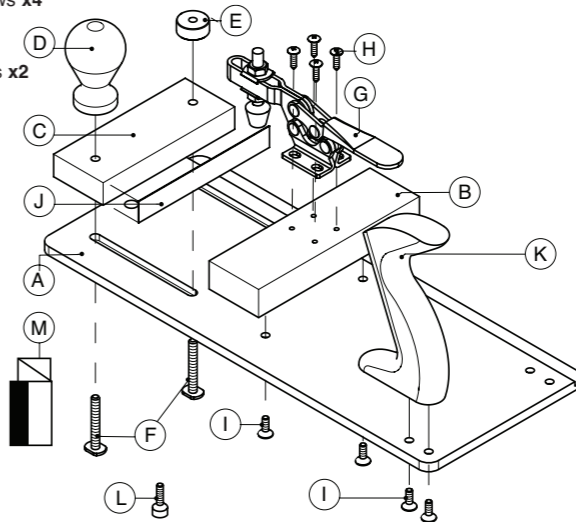
Attention should be made to the HSE's Safe Use of Vertical Spindle Moulding machines Information Sheet No.18 and any revisions.

ITEMS REQUIRED

- Fixed head routing machine
- Pozzi® No.2 screwdriver
- Slotted screwdriver
- 13mm A/F spanner

**ITEMS ENCLOSED &
DESCRIPTION OF PARTS**

- A. Base plate x1
- B. Fixed butt x1
- C. Sliding butt with abrasive pad x1
- D. Front clamping round grip knob x1
- E. Front clamping knurled but x1
- F. Sliding butt T bolt x2
- G. Toggle clamp x1
- H. Toggle clamp fixing machine screws x4
- I. Knob fixing machine screws x4
- J. Abrasive strip x1
- K. Back handle x1
- L. Spelch block fixing screws x2
- M. Instructions x1



ENVIRONMENTAL PROTECTION
Recycle raw materials instead of disposing as waste.

Packaging should be sorted for environmental-friendly recycling. The product and its accessories at the end of its life should be sorted for environmental-friendly recycling.

GUARANTEE

All Trend products are guaranteed against any defects in either workmanship or material, except products that have been damaged due to improper use or maintenance.

© Trend Machinery & Cutting Tools Ltd. 2007 E&OE
© All trademarks acknowledged

Trend Machinery & Cutting Tools Ltd.
Odhams Trading Estate St. Albans Road
Watford WD24 7TR England

Enquiries: 0800 487363

Technical Support: 0044 (0) 1923 224681

Fax: 0044 (0) 1923 236879

Email: enquiry@trendm.co.uk

Web: www.trend-uk.com



BSI
RS 28982
Stockholding
& Supply



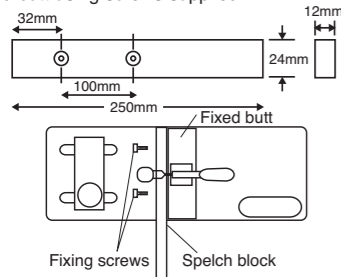
RECYCLABLE

OPERATION



The pushblock workholder has been designed so that it can be used for inverted routing or overhead routing by moving the handle positions. The pushblock is pushed by two hands and is guided by the back fence fitted to the fixed head router machine table. The pushblock workholders' main use when inverted routing is to hold the rails for the scribe cut on the end grain of a profile scribe joint. The scribe joint is used when making frame and panel doors.

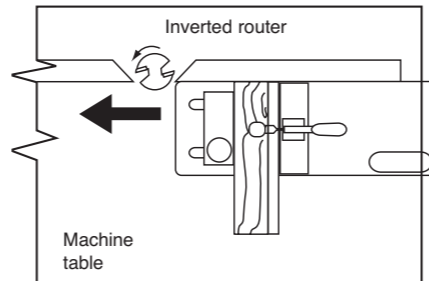
To use the Pushblock Workholder properly a user made sacrificial splch block should be made and fitted, this prevents breakout on the back edge of the component when cross cutting. The splch block should be made from minimum 12mm thick MDF (suggested 18mm thick), the length should be about 250mm. Drill and counterbore two holes at 100mm centres to accept M5 screws. The counterbore diameter should be 12.7mm with a 5mm drill. Counterbore depth 5mm. Screw splch block to fixed butt using screws supplied.



Router Table (Inverted) Mode

- For inverted router use the handles should be fitted to the left-hand side of the baseboard. The splch block should be flush with the right edge of the baseboard.
- Fit tooling in router table and set the back-fence following manufacturers instructions (ensuring opening around cutter is reduced to a minimum). Stacked tooling (multi-blade, block and groover, etc.) on an arbor should have cutting edges staggered to each other to reduce cutting impact.
- Place component in pushblock against splch block ensuring correct face side orientation of component. Position sliding stop to clamp component. The abrasive pad provides additional grip.
- Tighten knurled knob and clamping knob. Adjust screw pad on toggle clamp so that downward pressure is applied on the component when lever is depressed. Lock the two nuts on toggle clamp screw pad with a spanner.
- Push down lever on toggle clamp to provide downward pressure on component.
- Using component in pushblock as a guide set cutter height using a fine height adjuster on a router and lock router plunge lever. The baseboard on the pushblock is rebated to allow clearance for the bottom groover block when profile scribing.

- Set safety guards on router table.
- Switch on machine and when cutter is at full speed, place pushblock with component fitted onto the machine table against right hand side back fence and feed from right to left until end grain cut is achieved. Cutter will cut into the splch block. There is no need to cut into the fixed butt.



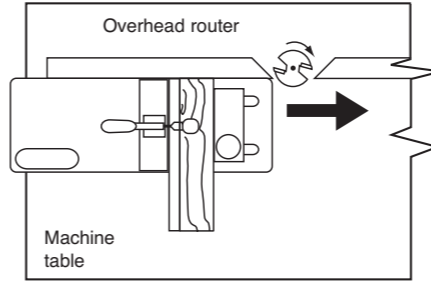
- Retract pushblock.
- Undo toggle clamp and front sliding butt to remove component, repeat operation for other components.



In router table mode stand to the front right of the table, the cutter will rotate anti-clockwise when viewed from the top so the feed direction is from the right to left (against the rotation of the cutter).

Overhead Mode

- For overhead router use, for example grooving to accept a flat biscuit dowel, move handles to right-hand side, and move splch block so it is flush with the left of the baseboard.
- Set up of the cutter, back fence and guards is the same as inverted use, however feed direction is from left to right.



In overhead mode stand to the front left of the machine table, the cutter will rotate clockwise when viewed from the top so the feed direction is from the left (against the rotation of the cutter).



Regularly check knobs, handles and locking nuts are tight.

SPARE PARTS

Only use original Trend spare parts.

Item	Qty.	Desc.	Ref. (1 off)
A	1	Base board 400mm x 165mm x 8mm	WP-PB4/01
B	1	Fixed butt 65mm x 50.8mm x 25mm	WP-PB4/02
C	1	Sliding butt 165mm x 50.8mm x 20mm	WP-PB4/03
D	1	Clamp knob round UNC1/4-20	WP-PB4/04
E	1	Knurled nut UNC1/4-20	WP-PB4/05
F	2	T bolt UNC1/4-20 x 42mm	WP-PB4/06
G	1	Toggle clamp	WP-PB4/07
H	4	Screw self tapping pan 3.5mm x 13mm Phillips	WP-PB4/08
I	4	Machine screw csk M6 x 20mm Pozī	WP-PB4/09
J	1	Abrasive strip 140mm x 19mm	WP-PB4/10
K	1	Handle 126mm x 80mm x 25mm	WP-PB4/11
L	2	Machine screw csk M5 x 20mm slot	WP-SCW/72
M	1	Instructions	INST/PUSH/4

MAINTENANCE

The accessory has been designed to operate over a long period of time with minimum of maintenance. Continual satisfactory operation depends upon proper tool care and regular cleaning.

Cleaning

- Keep the threads of the clamp clear of sawdust.
- Regularly clean with a soft cloth

Lubrication

- Your accessory requires no additional lubrication.

Safety Points

- Disconnect power tool and attachment from power supply when not in use, before servicing, when making adjustments and when changing accessories such as cutters. Ensure switch is in "off" position and cutter has stopped rotating.
- Read and understand instructions supplied with power tool, attachment and cutter.
- Current Personal Protective Equipment (PPE) for eye, ear and respiratory protection must be worn. Keep hands, hair and clothes clear of the cutter.
- Before each use check cutter is sharp and free from damage. Do not use if cutter is dull, broken or cracked or if any damage is noticeable or suspected.
- The maximum speed (n_{max}) marked on tool or in instructions or on packaging shall not be exceeded. Where stated, the speed range should be adhered to.
- Insert the shank into the router collet at least all the way to the marked line indicated on the shank. This ensures at least 3/4 of shank length is held in collet. Ensure clamping surfaces are clean.
- Check all fixing and fastening nuts, bolts and screws on power tool, attachment and cutting tools are correctly assembled, tight and to correct torque setting before use.
- Ensure all visors, guards and dust extraction is fitted.
- The direction of routing must always be opposite to the cutter's direction of rotation.
- Do not switch power tool on with the cutter touching the workpiece.
- Trial cuts should be made in waste material before starting any project.
- Repair of tools is only allowed according to tool manufacturers instructions.

Please see www.trend-uk.com/safety for more safety advice.



Our policy of continuous improvements mean that specifications may change without notice. Trend Machinery & Cutting Tools Ltd. cannot be held liable for any material rendered unusable, or for any form of consequential loss.