

All Trend tooling is guaranteed against any defects in either workmanship or material, except tools that have been damaged due to improper use or maintenance.

Our policy of continuous improvements mean that specifications may change without notice. Trend Machinery & Cutting Tools Ltd. cannot be held liable for any material rendered unusable, or for any form of consequential loss.

© Trend Machinery & Cutting Tools Ltd. 2004 E&OE
© All Trademarks Acknowledged

Trend Machinery & Cutting Tools Ltd.
Odhams Trading Estate St Albans Road
Watford WD24 7TR England
Enquiries: _____ 0800 487363
Technical Support: 0044 (0) 1923 224681
Fax: _____ 0044 (0) 1923 236879
Email: _____ mailserver@trendm.co.uk
Web: _____ www.trendmachinery.co.uk



RS 28982
Stockholding
& Supply

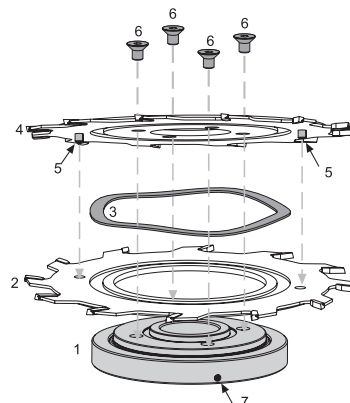


5 027654 1535769 >

RECYCLABLE

Disassembling and assembling instructions for re-sharpening

1. Disassembling and assembling should be done when the outer ring is fully opened to the maximum width of 3.6mm.
2. Hold the upper sawblade (4) to prevent the spring ring (3) from jumping out.
3. Release the four hex screws (6).
4. Disassemble all the parts.
5. To assemble the tool, follow the order shown in the drawing.
6. Make sure that the locating pins (5) fit into the holes in the lower blade (2).
7. Check that the spring ring (3) is fitted into its' slot correctly and then tighten the four hex screws (6).



Parts

1. Base
2. Lower sawblade
3. Spring ring
4. Upper sawblade
5. Locating pins
6. Hex screws
7. Locking screw

Instructions for re-sharpening

1. By using the necessary grinding attachment (Order Ref. IT/5510701) it is possible to grind both parts of the scorer together.
2. Follow the instructions for disassembling the scorer shown on the right.
3. Place the left (2) and right (3) sawblade together, making sure the locating pins fit into the holes in the opposite blade.
4. Screw the grinding fixture (1) to the two sawblades with the supplied hex screws (4). Ensure that the screws are placed into the holes as shown in the drawing.

