



Collet Extension CE/8

Please
read carefully
before use



INST/CE/8 v6.1

trend[®]
routing technology

COLLET EXTENSION REF. CE/8

Thank you for purchasing this Trend product which should give lasting performance if used in accordance with these instructions.

The collet extension is supplied as standard with either a 1/4" (6.35mm) or 8mm collet. Other sizes of collet and nut sets are available to fit other sizes of router cutter.

The following symbols are used throughout these instructions.



Denotes risk of personal injury, loss of life or damage to the tool in case of non-observance of the instructions.



Refer to the instruction manual of your power tool.

This unit must not be put into service until it has been established that the power tool to be connected to this unit is in compliance with 2006/42/EC (identified by the CE marking on the power tool).

INTENDED USE

This accessory is intended to be used with a fixed head routing machine with an 8mm collet capacity and a minimum power of 850 watts. It is for use with router cutters not exceeding 35mm diameter and with a maximum tool cut length of 25mm. Maximum speed 18,000 rpm.

SAFETY

Please read and understand the safety points at the end of this instruction as well as the power tool instructions before use.

PLEASE KEEP THESE INSTRUCTIONS IN A SAFE PLACE.

The attention of UK users is drawn to The Provision and Use of Work Equipment Regulations 1998, and any subsequent amendments.

Users should also read the HSE/HSC Safe Use of Woodworking Machinery Approved Code of Practice and Guidance Document and any amendments.

Attention should be made to the HSE's Safe Use of Vertical Spindle Moulding machines Information Sheet No. 18 and any revisions.

Users must be competent in using woodworking equipment before using our products.

Ensure working position is comfortable. Please keep children and visitors away from tools and work area. All tools have a residual risk, so must therefore be handled with caution.

ITEMS REQUIRED

- Router with 8mm collet fitted.
- Router table or overhead router stand.
- 12mm A/F open ended spanner (forged steel).
- 17mm A/F open ended spanner (forged steel).

ITEMS ENCLOSED

- A. Body **x1**
- B. Collet nut **x1**
- C. Collet **x1**
- D. Instructions **x1**

ASSEMBLY

Fitting Collet Extension to Router

To fit the collet extension, the 8mm collet will need to be fitted into the router. The router must be held stationary in a router table or overhead mode. Insert the cutter shank into the collet at least all the way to the marked line indicated on the shank. This ensures at least 3/4 of the shank length is held in the collet. Collet and nut should be tightened as per the manufacturers recommendation.

A 12mm spanner is required to hold the body of the collet extension whilst the 17mm spanner is used on the collet nut.



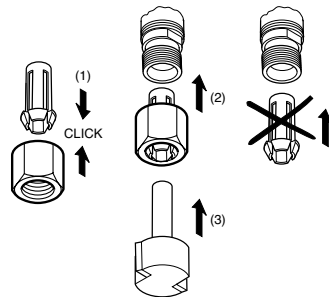
Take shallow cuts when using the collet extension to minimise side pressure and load on bearings.

The collet extension is rated to 24,000 rpm, however the maximum cutter speed should not exceed 18,000 rpm. The maximum cutter diameter should not exceed 35mm and maximum cut length of 25mm.

Use only in a fixed head routing mode.

Fitting the Collet

The collet and nut assembly on the collet extension assembly is a multi-slit type, which means that the collet must be clipped into the collet nut before fitting into the body. The standard and accessory collet & nut sets are supplied pre-assembled. However please check before fitting. If the collet is not fitted into collet nut please assemble as shown.



Place collet assembly into body of extension. Thread the collet nut onto the body. Do not tighten.



Consider working environment before using tools. Ensure working position is comfortable and component is clamped securely.

OPERATION



Fitting Cutters to Collet Extension

Insert the cutter shank into the collet at least all the way to the marked line indicated on the shank. This ensures at least 3/4 of the shank length is held in the collet.

Place a 12mm spanner onto the flats on the collet extension body and place a 17mm spanner on the flats of the collet. Tighten collet nut, do not use excessive force.



Always isolate router from power supply before making any adjustments.



Do not tighten the collet without a cutter fitted. Always use cutters with shanks that match the diameter of the collet.



Check feed direction before use.

Removing Cutters from Collet Extension

Place a 12mm A/F spanner on the flats on the collet body; undo the collet nut using the 17mm spanner. Keep turning the spanner until the collet nut tightens and then loosens again. This is the fail safe-mechanism releasing the collet.

The cutter should now slide out.

Each time you finish using a cutter, remove it and store it in a safe place.

After use store collet extension carefully.

ACCESSORIES

Please use only Trend original accessories.

Desc.	Ref. (1 off)
6mm Collet & Nut Set	CE/CNS/8/6
Spanner 12mm A/F	SPAN/12
Spanner 17mm A/F	SPAN/17

SPARE PARTS

Please use only Trend original spare parts.

Item	Qty	Desc.	Ref. (1 off)
B	1	1/4"(6.35mm) Collet & Nut Set	CE/CNS/8/635
	1	8mm Collet & Nut Set	CE/CNS/8/8
C	1	Collet Nut	CE/NUT/8
D	1	Instructions	INST/CE/8

MAINTENANCE

Continual satisfactory operation depends upon proper tool care and regular cleaning.

Cleaning

- Ensure clamping surfaces are cleaned to remove dirt, grease, oil and water.
- Remove resin build-up regularly.
- Apply a rust protector to shanks.

Lubrication

- Accessory requires no additional lubrication.

Storage

- Always return accessory to its packaging after use.

ENVIRONMENTAL PROTECTION

Recycle raw materials instead of disposing as waste.

Packaging should be sorted for environmental-friendly recycling.

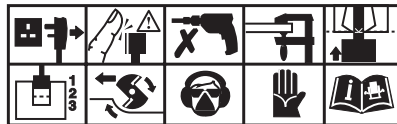
The product and its accessories at the end of its life should be sorted for environmental-friendly recycling.

GUARANTEE

All Trend products are guaranteed against any defects in either workmanship or material, except products that have been damaged due to improper use or maintenance.

Safety Points

1. Disconnect power tool and attachment from power supply when not in use, before servicing, when making adjustments and when changing accessories such as cutters. Ensure switch is in "off" position and cutter has stopped rotating.
 2. Read and understand instructions supplied with power tool, attachment and cutter.
 3. Current Personal Protective Equipment (PPE) for eye, ear and respiratory protection must be worn. Keep hands, hair and clothes clear of the cutter.
 4. Before each use check cutter is sharp and free from damage. Do not use if cutter is dull, broken or cracked or if any damage is noticeable or suspected.
 5. The maximum speed (n_{max}) marked on tool or in instructions or on packaging shall not be exceeded. Where stated, the speed range should be adhered to.
 6. Insert the shank into the router collet at least all the way to the marked line indicated on the shank. This ensures at least 3/4 of shank length is held in collet. Ensure clamping surfaces are clean.
 7. Check all fixing and fastening nuts, bolts and screws on power tool, attachment and cutting tools are correctly assembled, tight and to correct torque setting before use.
 8. Ensure all visors, guards and dust extraction is fitted.
 9. The direction of routing must always be opposite to the cutter's direction of rotation.
 10. Do not switch power tool on with the cutter touching the workpiece.
 11. Trial cuts should be made in waste material before starting any project.
 12. Repair of tools is only allowed according to tool manufacturers instructions.
 13. Do not take deep cuts in one pass, take shallow passes to reduce the side load applied to the cutter.
- Please see www.trend-uk.com/safety for more safety advice.



Our policy of continuous improvements mean that specifications may change without notice. Trend Machinery & Cutting Tools Ltd. cannot be held liable for any material rendered unusable, or for any form of consequential loss.

© Trend Machinery & Cutting Tools Ltd. 2014 E&OE
© All trademarks acknowledged

Trend Machinery & Cutting Tools Ltd.

Odhams Trading Estate St Albans Road
Watford WD24 7TR England
Tel: 0044(0)1923 249911
technical@trendm.co.uk
www.trend-uk.com



RECYCLABLE

