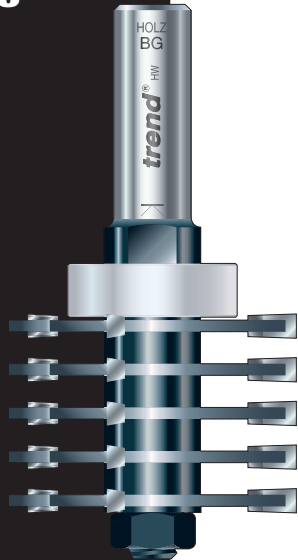




Comb Jointer 876

Please read carefully before use



trend
routing technology

INST/876 v5.0

COMB JOINTER CUTTER SET REF. 876

Thank you for purchasing this Trend router cutter, which should give lasting performance if used in accordance with these instructions.

The following symbols are used throughout these instructions.



Denotes risk of personal injury, loss of life or damage to the tool in case of non-observance of the instructions.



Refer to the instruction manual of your power tool.

This cutter must not be put into service until it has been established that the power tool to be connected to this unit is in compliance with 98/37/EC (identified by the CE marking on the power tool).

INTENDED USE

This Trend Comb Joint cutter set fits into any router with a 1/2" collet capacity, provided the router is mounted in a stationary mode. For example, the router can be mounted inverted in a router table.

The tool set comprises an assembly of equally spaced high quality tungsten carbide tipped slotters mounted on an arbor. It is used in conjunction with one of three alternative bearings, the bearing diameter governing the depth of cut.

Maximum timber width = 40mm.

Maximum timber thickness = 9.5mm.

SAFETY

Please read and understand the safety points at the end of this instruction as well as the power tool instructions before use.

PLEASE KEEP THESE INSTRUCTIONS IN A SAFE PLACE.

The attention of UK users is drawn to The Provision and Use of Work Equipment Regulations 1998, and any subsequent amendments.

Users should also read the HSE/HSC Safe Use of Woodworking Machinery Approved Code of Practice and Guidance Document and any amendments.

Users must be competent in using woodworking equipment before using our products.

Attention should be made to the HSE's Safe Use of Vertical Spindle Moulding machines Information Sheet No. 18 and any revisions.



Before using cutter, please ensure it is correctly assembled and locking nut is fully tightened to correct torque setting

Recommended speed is 24,000rpm

ITEMS REQUIRED

- Router with suitable collet fitted
- Router table or overhead router stand
- Hand tools
- Jig making equipment & materials
- Workholder

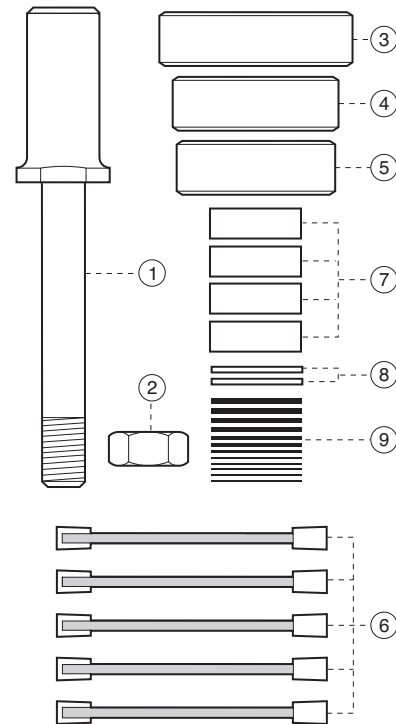
PARTS SUPPLIED IN SET

see diagrams

- | | |
|--------------------------|----|
| 1. Arbor | x1 |
| 2. Nut 13mm A/F | x1 |
| 3. Bearing 34mm diameter | x1 |
| 4. Bearing 29mm diameter | x1 |
| 5. Bearing 28mm diameter | x1 |
| 6. Groover 4mm kerf | x5 |
| 7. Spacer 5.3mm | x4 |
| 8. Washer 1.0mm | x2 |
| 9. Shim 0.1mm | x2 |
| Shim 0.3mm | x2 |
| Shim 0.4mm | x2 |
| Shim 0.6mm | x2 |
| Shim 0.8mm | x2 |

COMB JOINTER

as supplied



ENVIRONMENTAL PROTECTION

Recycle raw materials instead of disposing as waste.

Packaging should be sorted for environmental-friendly recycling. The product and its accessories at the end of its life should be sorted for environmental-friendly recycling.

GUARANTEE

All Trend products are guaranteed against any defects in either workmanship or material, except products that have been damaged due to improper use or maintenance.

© Trend Machinery & Cutting Tools Ltd. 2006 E&OE
© All trademarks acknowledged

Trend Machinery & Cutting Tools Ltd.

Odhams Trading Estate St. Albans Road
Watford WD24 7TR England

Enquiries: _____ 0800 487363

Technical Support: _0044 (0) 1923 224681

Fax: _____ 0044 (0) 1923 236879

Email: _____ enquiry@trendm.co.uk

Web: _____ www.trend-uk.com

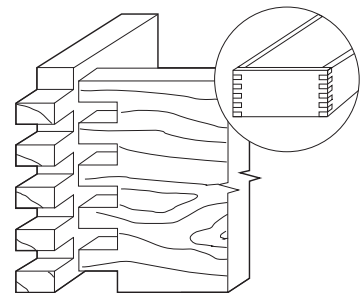
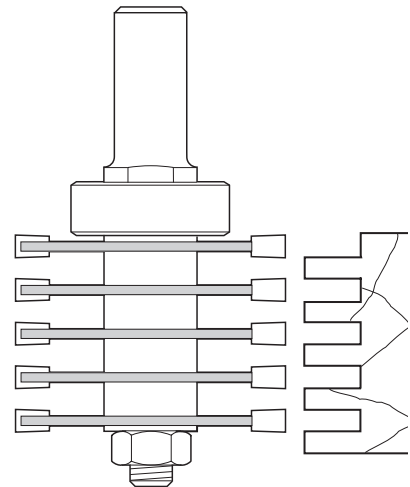


RS 26982
Stockholding
& Supply



RECYCLABLE

ASSEMBLED JOINTER



OPERATION



Choose the appropriate bearing for the timber thickness being used.

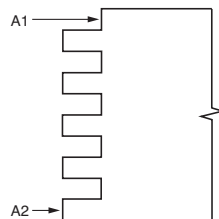
Examples:

Bearing	Timber Thickness
34mmØ	up to 6.5mm
29mmØ	from 6.6mm to 9.0mm
28mmØ	from 9.1mm to 9.5mm

It is essential for this operation that you have the facility to make and use a 'tenoning' block or table fitted with a wooden splch block. The splch block is screwed or glued to the tenon block and acts as a support to the timber being cut across the grain. The splch block prevents breakout of the grain.

The timber being used must be prepared and cross cut square.

Make a trial cut on a piece of scrap material which has exactly the same thickness as the workpiece. Make sure that A1 is equal to A2.



Cut the test piece into two sections and invert one piece against the other.

Check faces are aligned. If not, adjust the router depth with the fine height adjuster (if fitted) to raise or lower the cutter.

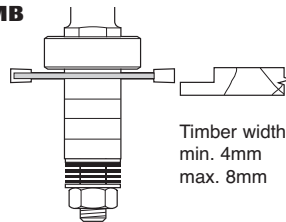
After making the first cut, the counter-cut is now carried out by inverting the wood. Once again, check for alignment and correct the position of the tool if required.

After regrinding, the tool may need shimming up to tighten the joint. Shims are provided for that purpose in the set

ASSEMBLIES

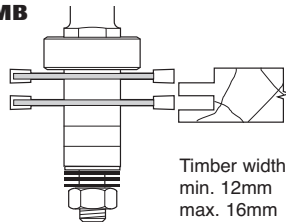
The appropriate assembly is chosen according to timber width.

ONE COMB



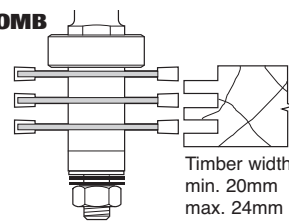
Timber width:
min. 4mm
max. 8mm

TWO COMB



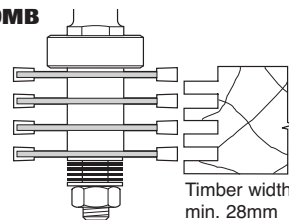
Timber width:
min. 12mm
max. 16mm

THREE COMB



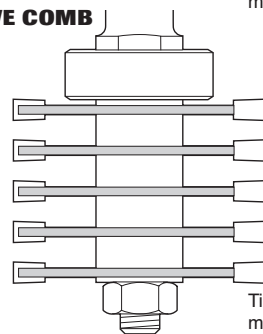
Timber width:
min. 20mm
max. 24mm

FOUR COMB



Timber width:
min. 28mm
max. 32mm

FIVE COMB



Timber width:
min. 36mm
max. 40mm



Always stagger the cutters.

SPARE PARTS

Description	Order Ref.
Arbor complete with Washers, Spacers and Shims	SP-876A
Slotter - 3 Wing (4mm Kerf x 47.6mm Ø)	SP-876B
Spacer 8mm Bore x 5.3mm Thick	SPAC/8/53
Bearing 34mm Ø - up to 6.5mm	BB34
Bearing 29mm Ø - 6.6mm - 9.0mm	BB29
Bearing 28mm Ø - 9.1mm - 9.5mm	BB28
Replacement Arbor Nut	ANUT/33/30
Spacer Set	SPACER/8

MAINTENANCE

Continual satisfactory operation depends upon proper tool care and regular cleaning.

Cleaning

- Remove resin build-up regularly.
- Apply a rust protector to shanks. Do not use rust protector on ball bearing guides

Lubrication

- Use a PTFE dry lubricant spray on tool.
- Apply a rust protector to shanks. Do not use rust protector on ball bearing guides

Storage

- Return cutter to its packaging after use.

Safety Points

- Disconnect power tool and attachment from power supply when not in use, before servicing, when making adjustments and when changing accessories such as cutters. Ensure switch is in "off" position and cutter has stopped rotating.
- Read and understand instructions supplied with power tool, attachment and cutter.
- Current Personal Protective Equipment (PPE) for eye, ear and respiratory protection must be worn. Keep hands, hair and clothes clear of the cutter.
- Before each use check cutter is sharp and free from damage. Do not use if cutter is dull, broken or cracked or if any damage is noticeable or suspected.
- The maximum speed (nmax) marked on tool or in instructions or on packaging shall not be exceeded. Where stated, the speed range should be adhered to.
- Insert the shank into the router collet at least all the way to the marked line indicated on the shank. This ensures at least 3/4 of shank length is held in collet. Ensure clamping surfaces are clean.
- Check all fixing and fastening nuts, bolts and screws on power tool, attachment and cutting tools are correctly assembled, tight and to correct torque setting before use.
- Ensure all visors, guards and dust extraction is fitted.
- The direction of routing must always be opposite to the cutter's direction of rotation.
- Do not switch power tool on with the cutter touching the workpiece.
- Trial cuts should be made in waste material before starting any project.
- Repair of tools is only allowed according to tool manufacturers instructions.

Please see www.trend-uk.com/safety for more safety advice.



Our policy of continuous improvements mean that specifications may change without notice. Trend Machinery & Cutting Tools Ltd. cannot be held liable for any material rendered unusable, or for any form of consequential loss.