

## VARIJIG FRAME SYSTEM

**Adjustable frame & guide for use with a router.**

- Adjustable frame for rectangles and squares.
- Allows a router to cut recesses, slots, face panel moulds etc.
- Four lengths of 27-1/2" extrusion with dual metric/imperial measuring scales.
- Working area 23-1/2" x 23-1/2".
- Cross cut accuracy to 5 thou. A square is required to square frame before use.
- Use with a guide bush with minimum 5/16" spigot length, or use Unibase as guide.
- Can also be used to create panel doors for kitchens etc.



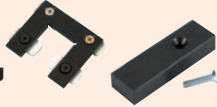
Router not included.



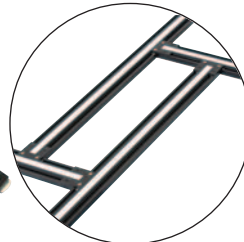
**Compatibility**  
www.trend-usa.com/compatibility

**Includes:**

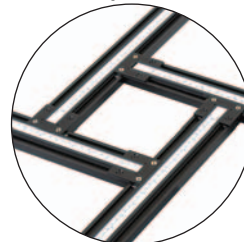
- 4 x Alloy Extrusions with Scales
- 4 x Corner Brackets
- 1 x Anti-tilt Shoe
- 1 x Anti-tilt Shoe Fixing Screw



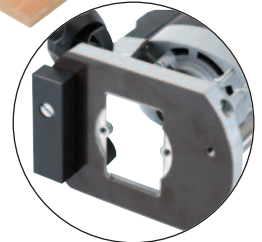
**Product Reference:**  
**U\*VARIJIG**



Rectangles



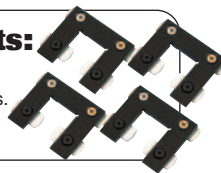
Squares



Anti-tilt Shoe

**Replacement Parts:**

- Frame Jointing Kit**  
Set of four corner jointing brackets.  
**U\*VJS/FJK**



## VARIJIG TENON & GROOVING JIG

**Allows grooves & tenons to be cut using a router.**

- Can be used to crosscut boards with router or circular saw.
- Frame is adjustable to allow narrower or wider grooves to be routed. The max. adjustment is 2-3/4" depending on the diameter of the router base.
- The edge of the frame can be used as a guide to trim a panel square using a router.
- Two sliding stops to set groove length.
- Squaring butt has the facility to accept a splch block to allow a full-length groove. Fixing screws are included for this purpose.
- Working length is 15-3/4".
- Use with a router with a guide bush with a minimum 3/8" projection fitted.
- Requires two clamps.

**Product Reference:**  
**U\*VJS/TG/JIG**



Trimming



Crosscutting



Trenching/Grooving

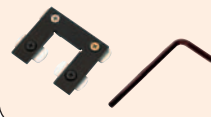


Router and clamps not included.

**Compatibility**  
www.trend-usa.com/compatibility

**Includes:**

- 4 x Alloy Extrusions
- 4 x Corner Brackets
- 3 x Scales
- 1 x Squaring Butt
- 2 x Length Stops
- 1 x Hex Key



**Optional Accessories:**

- F Clamp**  
**U\*FC/200** (1 off)  
**Recommended 1-3/16" Guide Bush**  
Euro Style with extra long 3/8" spigot.  
**U\*GB30/A**  
Screw-on Style.  
**U\*GB/US/30**

