

NEW PRODUCTS

ADDITIONS TO 2011/12 CATALOGUE **JANUARY 2012**



NEW

**VARIJIG
CLAMP GUIDES**



NEW

**PROFESSIONAL
CUTTERS**



NEW

**DIGITAL DEPTH
GAUGE**



NEW

**CRAFTPRO
SAWBLADES**



NEW

**SAFETY
GOGGLES**



NEW

**Trend
Snappy**
The Quick Release Drill System
**TREND SNAPPY
PRODUCTS**

**INCLUDES THE NEW
CRT/MK3 CRAFTPRO
ROUTER TABLE**



**INCLUDES
SPECIAL OFFERS
& PROMOTIONS**

**PRICES
VALID UNTIL
31ST DEC 2012**

trend[®]
routing technology

CRAFTPRO ROUTER TABLE MK3

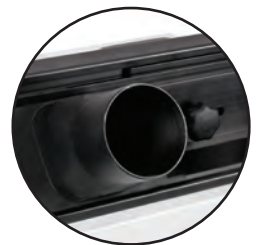
The New CraftPro Router Table will suit tradesman, craftsmen and woodworking enthusiasts. It is packed with the necessary features to maximise the versatility of all popular portable routers.

- Laminated MDF table top 610mm x 405mm x 26mm thick with steel legs for bench mounting. Bench height 410mm.
- Removable 6.35mm aluminium insert plate with a 98mm diameter aperture and two insert rings 31.8mm and 67.5mm diameter.
- Pre-drilled for T11 router Quick Raiser and T11 quick release fixing holes.
- Adjustable quick release back-fence with sliding cheeks, clear safety guard and top pressure.
- 57mm diameter dust spout.
- Lead-on pin for bearing guided work.
- Edge planing facility of 1.4mm or 2.4mm.
- Includes 240 volt no-volt release switch, side finger pressure, pushstick, and fully adjustable mitre fence.
- Fits Trend routers directly.

NEW



Guard Assembly
Fully adjustable



57mmØ Dust Spout Aperture



SAFETY FEATURES

- No-volt Release Switch
- Adjustable Top & Side Pressure
- Adjustable Safety Guard
- Sliding Fence Cheeks
- Two Insert Rings
- Pushstick

VIEW A DISPLAY MODEL AT PARTICIPATING STOCKISTS AROUND THE UK.

See www.trend-uk.com



Product Ref.

CRT/MK3 (240v) £199.00

Accessories

CRT/4

Hose with adaptor 39mm x 3 metre to allow fitting to a dust extractor.

T30/22

Large diameter hose 57mm x 1.5 metre for use with T30 dust extractor.

T11/JT/KIT

T11 router quick release kit to allow quick removal of T11 router.

Router not included.



Edge Moulding



Edge Planing



To fit the following routers directly:

TREND T5, T5 MK2, T9, T10, T11, BOSCH GOF1600A, 1700ACE CMT CMT1E, 2E DEWALT DW613, 614, 615, 620, 621, 624, 625E, 629 DRAPER PT1200V ELU MOF96(E) MK2, 131, 177(E), OF97(E) MAKITA RP0910, 1110C PERLES OF808(E) >1999

Removable aluminium centre plate of table will need to be re-drilled for other makes and models of routers.

Includes:

- | | |
|----------------------------|----------------------|
| 2 x Insert Rings | 2 x Finger Pressures |
| 1 x No-volt Release Switch | 1 x Safety Guard |
| 1 x Mitre Fence | 1 x Lead-on Pin |
| | 1 x Pushstick |



Aluminium Plate

6.35mm thick with levelling facility and lead-on pin.



T11 Quick Release Fixing Holes

Allows T11 to be fitted to table for quick fitting & removal when used with optional Quick Release Kit.



Quality Mitre Fence

With zeroing and splinch block facility.



Quick Raiser

Includes holes for T11 & fine height adjuster.



Quick Release Back Fence

Extruded aluminium with adjustable MDF cheeks & edge planing facility.

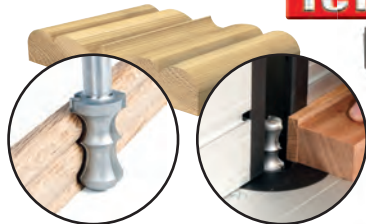
NEW CUTTERS

LINEN FOLD ROUTER CUTTERS **NEW**

Cutters to create linen fold effect on panels.

- Two fluted for clean finish on timbers.
- Linen fold cutter Ref. 18/96 creates mould for panel, and the guided dish cutter Ref. 23/12 creates the scroll effect to finish the linen fold ends.
- A user made template is required.
- Full instructions included.

TCT



Ref. 18/96

Ref. 23/12
For scroll effect

Product Ref.

18/96X1/2TC £79.00

Linen fold (25mm dia x 44mm cut)

23/12X1/4TC £39.50

Scroll (R4mm x 12.7mm dia)

45 DEGREE 'V' GROOVE ROUTER CUTTERS

Tungsten Carbide tipped for 'V' grooving and edge chamfering.

- Two fluted for clean finish.
- Ideal for panelling.
- Can be used for engraving and sign writing.

FOUR NEW SIZES



Product Ref.

11/2X1/2TC £27.30

(9.5mm dia. x 5mm cut)

11/31X1/4TC £21.00

(12.7mm dia. x 6.55mm cut)

11/31X1/2TC £21.00

(12.7mm dia. x 6.55mm cut)

11/32X1/4TC £22.50

(16mm dia. x 8mm cut)

11/32X1/2TC £22.50

(16mm dia. x 8mm cut)

11/30X1/2TC £45.00

(25.4mm dia. x 13mm cut)

TCT

NEW



TEMPLATE OVERSIZE ROUTER CUTTER **TCT**

For Porter-Cable® Latch & Strike Template (59375) and Hinge Template (59370).

- Useful when making jigs, templates and patterns.
- Shank mounted bearing guided.
- Down shear for clean cut.
- Equivalent to Porter-Cable® Ref. 43671.
- 12.7mm diameter x 9.5mm cut with 15.9mm diameter bearing.

NEW



Product Ref.

26/4X1/4TC £25.00

(12.7mm dia x 9.5mm cut)



VARIJIG CLAMP GUIDE RANGE **NEW**

A range of self clamping, straight line clamp guides that use the Varijig low profile extrusion.

- For accurate guiding of routers, saws and jigsaws.
- Low profile extrusion with integral clamping of work-piece, double locking mechanism and two full length T slots.
- Common Varijig extrusion to 24 inch (610mm), 36 inch (915mm) and 50 inch (1270mm) Clamp Guides.
- Metric and imperial sliding scale.
- Extrusion profile 16mm high x 54mm wide.
- Ref. VJS/CG/PRO8 is an extra wide clamp 5" (127mm) with four T slots. Ideal for large sheet material. Clamps up to 2.44 metre.
- Jaws have fixing holes for accessories.



8 FOOT AVAILABLE

Extra wide clamp
Ref. VJS/CG/PRO8

Product Ref.

VJS/CG/24 (24 inch / 610mm) £27.00

VJS/CG/36 (36 inch / 915mm) £32.00

VJS/CG/50 (50 inch / 1270mm) £37.00

VJS/CG/PRO8 (8 foot / 96 inch / 2440mm) £119.00

Router and cutter not included.

OTHER PRODUCTS IN THE VARIJIG RANGE

VARIJIG FRAME SYSTEM

Adjustable frame and guide for use with a router.

VARIJIG

cat page 158

VARIJIG STRAIGHT GUIDES

For routers, jigsaws and circular saws.

VJS/G/100 (100°) cat page 158

VJS/G/35 (35°) cat page 159

VARIJIG TENON & GROOVING

Allows grooves and tenons to be cut using a router.

VJS/TG/JIG

cat page 159

VARIJIG ANGLE GUIDE

Variable angle guide for the router or saw.

VJS/AG/36

cat page 160

TWO FLUTE STRAIGHT ROUTER CUTTER **NEW**

Two flute Tungsten Carbide tipped cutter for timbers and man-made boards.

- For routing grooves and rebates.

Product Ref.

3/52X1/2TC £21.50

(9mm dia x 25mm cut)

TCT



3 PIECE KITCHEN FITTERS PACK **NEW**

Tungsten Carbide Tipped cutters for routing the worktop joint with a jig and for creating biscuit joint slot.

- Two worktop cutters 12.7mm diameter x 50mm cut length with TC centre tip. Ref. TR17D X1/2TC.
- One piece 4mm kerf bearing guided biscuit jointing cutter. Ref. TR35X1/2TC for biscuit sizes No. 0, 10 and 20.
- Biscuit cutter is used to reinforce worktop joint using biscuits (not included).

Product Ref. **TR/KFP/5** £69.00



3 PIECE SET

CRAFTPRO SAWBLADES

Designed for a professional finish in wood, MDF, particle board, hardboard & plywood.

- Microgranular Tungsten Carbide Tipped to allow cutting of abrasive materials.
- Sawblades for portable saw including plunge saws, and mitre saws.



TCT
TUNGSTEN
CARBIDE
TIPPED

IDEAL FOR PLUNGE SAWS

Dewalt DWS520K
Festool TS55EQ
Mafell MT55CC
Makita SP6000K

IDEAL FOR CORDLESS TRIM SAWS

AEG BKS18i

IDEAL FOR MITRE SAWS

Dewalt DW700
Elu PS174



14 NEW SIZES



TUNGSTEN CARBIDE TIPPED

DIA.	TEETH	KERF	THICK	BORE	TYPE	HOOK	APPLICATION	FOR MACHINE	PRODUCT REF	PRICE
160	48	2.2	1.6	20	TCP	plus 4°	Trimming of panels*	Festool TS55EQ plunge saw	CSB/PT16048	£ 39.00
160	52	2.2	1.6	20	TCP	neg. 6°	Aluminium and plastic	Festool TS55EQ plunge saw	CSB/AP16052	£ 39.00
160	48	2.2	1.6	20	ATB	plus 15°	Along and across grain	Festool TS55EQ plunge saw	CSB/16048A	£ 23.70
160	28	2.2	1.6	20	ATB	plus 15°	Along and across grain	Festool TS55EQ plunge saw	CSB/16028A	£ 21.00
162	48	1.8	1.2	20	ATB	plus 4°	Along and across grain	Mafell MT55CC plunge saw	CSB/16248	£ 21.00
165	24	1.6	1.0	15.88	ATB	plus 15°	Along and across grain	AEG BKS18Li cordless saw	CSB/16524TC	£ 20.50
165	48	1.6	1.0	15.88	ATB	plus 15°	Along and across grain	AEG BKS18Li cordless saw	CSB/16548TC	£ 21.00
165	64	1.6	1.0	15.88	ATB	plus 15°	Along and across grain	AEG BKS18Li cordless saw	CSB/16564TC	£ 23.00
165	48	2.2	1.6	20	ATB	plus 15°	Along and across grain	Makita SP-6000K plunge saw	CSB/16548B	£ 22.50
165	48	2	1.8	20	TCP	neg. 6°	Aluminium and plastic	Dewalt DWS520K plunge saw	CSB/AP16548	£ 29.00
165	48	2	1.8	20	TCP	plus 4°	Trimming of panels*	Dewalt DWS520K plunge saw	CSB/PT16548	£ 39.00
216	24	2.6	1.7	30	ATB	neg. 5°	Crosscut	Dewalt DW700, Elu PS174 mitre saw	CSB/CC21624	£ 25.80
216	60	2.6	1.7	30	ATB	neg. 5°	Crosscut	Dewalt DW700, Elu PS174 mitre saw	CSB/CC21660	£ 31.50
216	64	2.8	1.9	30	TCP	neg. 6°	Crosscut alloy/plastic	Dewalt DW700, Elu PS174 mitre saw	CSB/AP21664	£ 41.50

* Laminate faceside down.

DIGITAL DEPTH GAUGE

LCD depth gauge for setting tool height in a plunge router, router table and saw bench.

- Opening width 60mm and with 80mm measuring range.
- Metric, imperial and fraction read-out with auto shut off.
- Removable pin for hole depth measuring up to 50.8mm.
- Readout accuracy of +/- 0.1mm.
- Self standing with magnetic feet.
- Includes 3 volt CR2032 battery.

NEW



METRIC & IMPERIAL



Hole Depth



Horizontal Depth

Product Ref.

GAUGE/60 £19.00

Spare Part

BAT/CR2032/3V £2.00

SAFETY GOGGLES

Superior quality ski style contoured safety goggles.

- Adjustable elastic head strap.
- Ventilation holes and all round eye protection.
- Soft comfortable facial contour.
- Indirect vents.
- Approved to EN166:2001 for high speed particles – medium and liquid splash.



Ideal for use when routing



Suitable for use over most spectacles

Product Ref.

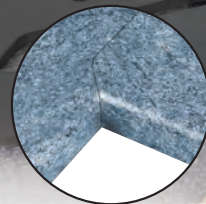
SAFE/GOG/B £8.50

CONTOURED DESIGN

NEW

NEW LIMITED EDITION

CRAFTPRO WORKTOP JIGS



Two new worktop jigs for use with 1/2" collet routers.

- Allows precise butt and scribe joints in worktops.
- Quick and easy to use.
- Fixed stop positions of 400mm, 500mm, 600mm, 616mm, 650mm, 700mm and 900mm.
- 12mm thick durable phenolic plastic.
- Alloy location bushes and engraved bush holes for easy identification.

FREE CUTTER
Each jig includes a TCT Worktop Cutter



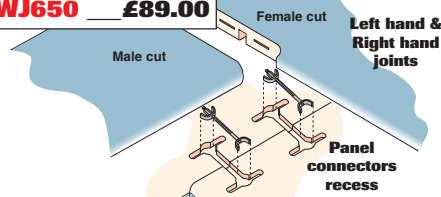
650MM WORKTOP JIG

- Fixed stop positions of 400mm, 500mm, 600mm, 616mm, 640mm and 650mm.



Product Ref.

CR/KWJ650 £89.00



900MM WORKTOP JIG

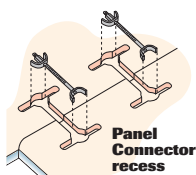
- Fixed stop positions of 400mm, 500mm, 600mm, 616mm, 650mm, 700mm and 900mm.
- 22.5° mitre corner joint.
- Three types of peninsular cuts including 45° end cut, corner radius and curved peninsular.



Product Ref.

CR/KWJ900 £129.00

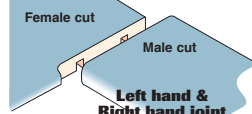
Router and guide bush not included.



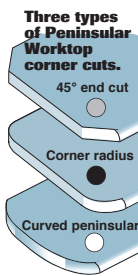
Panel Connector recess



Mitre worktop joints for hob units



Left hand & Right hand joint



Three types of Peninsular Worktop corner cuts.
45° end cut
Corner radius
Curved peninsular

MINI HEX KEY SET

16 mini hex keys for router cutter use.

- Chrome-vanadium.
- Metric and imperial hex keys.
- Metric sizes 0.7mm, 0.9mm, 1.3mm, 1.5mm, 2mm, 2.5mm & 3mm A/F.
- Imperial sizes 0.028", 0.036", 0.05", 1/16", 5/64", 3/32", 7/64", 1/8" & 9/64" A/F.
- Ideal for router cutters, modellers, engineers, automotive, DIY, electronics etc.

NEW



Product Ref.

HK/SET/A £4.50

16 PIECE

DOWEL CENTRE POINTS **NEW**

Six pack of metal dowel centres that fit into blind holes to allow lining up of the mating hole for wooden dowels.

- Pairs of 6mm, 8mm and 10mm diameter dowel centres.
- Place end of dowel centre into holes drilled in one piece of wood, place second piece of wood in required position and press to leave centre mark for the hole.



Product Ref.

DWL/C/PK1 £2.50

6MM, 8MM & 10MM DIA.

Strend **Snappy**

The Quick Release Drill System

NEW ADDITIONS

POZI® NO.2 DIAMOND 25MM INSERT BITS

Tips are Diamond and Sapphire particle coated.

3 PACK

- Coating provides optimum torque transfer and secure grip on screw head.
- Torsion zone to prevent premature breaking.
- Nickel coated, hi-grade chrome-vanadium through hardened.

NEW



Product Ref.

SNAP/IPZ2D/3 £5.90

8PC MASONRY DRILL SET

Milled one-piece Tungsten Carbide Tipped masonry drill set in tool holder.

8 PIECE

- For building blocks, mortar and brickwork.
- Diameters 3mm, 4mm, 5mm, 5.5mm, 6mm, 6.5mm, 7mm & 8mm.
- Supplied in tool holder which has Velcro® backed elasticated cartridges to allow layout flexibility.

TCT

NEW



Product Ref.

SNAP/MD3/SET £19.00

Spare Part

SNAP/TH/A (Empty tool holder)

SLOTTED 25MM INSERT BITS

Most popular sizes of slotted bits.

- Hi-grade chrome-vanadium through hardened for ultimate wear resistance.

NEW

3 PACK

- Four sizes.



Product Ref.

SNAP/IS45/3 (4.5mm x 0.6mm) £4.50

SNAP/IS55/3 (5.5mm x 0.8mm) £4.50

SNAP/IS65/3 (6.5mm x 1.2mm) £4.50

SNAP/IS8/3 (8mm x 1.6mm) £4.50

MAGNETIC QUICK CHUCK

Magnetic chuck accepts Trend Snappy shank fittings and insert screwdriver bits.

- Magnet will hold wood screws when used with insert bits.
- 15mm diameter x 60mm long.

NEW PRICE

IMPROVED DESIGN WITH SMALLER BODY DIAMETER

Product Ref.

SNAP/QCM £12.90



SOLID CARBIDE PLANER BLADES

Trend Solid Carbide Planer Blades fit most makes of portable electric planers & are supplied in pairs.

NEW PRICES

- High grade carbide and precision ground.
- Two cutting edges and reversible for extended life.
- Conversion kit required for Ref. PB/29 to fit some planers.
- See Routing Catalogue page 113 for full compatibility.



STC
SOLID TUNGSTEN CARBIDE

Product Ref.

PB/22 (80.0 x 5.0 x 1.2mm) £9.95

PB/25 (80.5 x 5.9 x 1.2mm) £9.95

PB/27 (92.0 x 5.5 x 1.2mm) £11.60

PB/28 (75.5 x 5.5 x 1.1mm) £9.95

PB/29 (82.0 x 5.5 x 1.1mm) £9.95

PB/CK/119 (Conversion Kit for PB/29) £11.03

NAMIC
NOW WITH CARBIDE

FOR EXTRA LONG LIFE

DIAMOND SHARPENING

BENCH STONE PROMOTION

Now available at new lower prices



NEW LOWER PRICES

Continual diamond surfaced stones for sharpening, deburring or honing a wide range of tools.

- Monocrystalline diamond allows clean stock removal.
- Precision flatness.
- Fast, easy to use, durable and versatile.
- Trend Lapping Fluid recommended.

Please see Routing Catalogue for the complete sharpening range.



Ideal for:
Planer Blades



Chisels



Knives & Scissors



Spindle Tooling



Knives & Scissors



Use with Lapping Fluid

DIAMOND WHETSTONE KIT

A diamond whetstone kit suitable for sharpening a wide variety of tools.

- Includes:
- DWS/B7/FC 7"x 2.5" bench stone
 - DWS/CC/FC Credit card stone
 - DWS/LF/100 Lapping fluid
 - DWS/BH/B7 Bench holder
 - DWS/CB/A Cleaning block
 - DWS/TH/B7 Tool pouch
 - DWS/NM/B7 Non-slip mat



Product Ref.

DWS/KIT/A **NOW £87.50**
(was £109.00)

Size and Grade

Product Ref.

Price

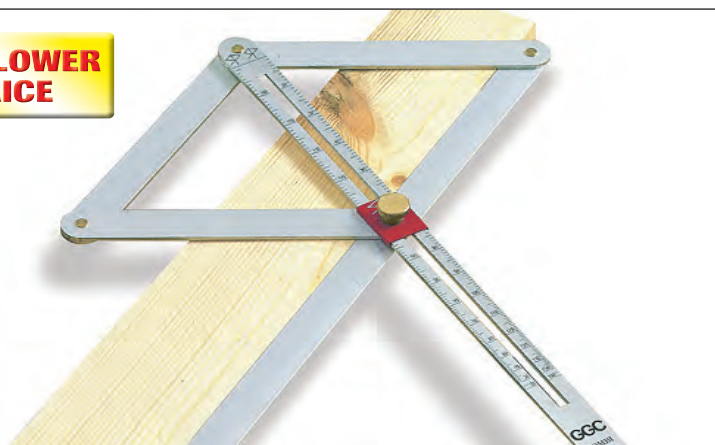
7" DOUBLE-SIDED BENCH STONE	DWS/B7/FC	NOW £59.50 (was £79.50)
◆ Fine 1000 grit ◆ Coarse 340 grit		
8" DOUBLE-SIDED BENCH STONE	DWS/W8/FC	NOW £79.50 (was £89.50)
◆ Fine 1000 grit ◆ Coarse 340 grit		
8" SINGLE-SIDED BENCH STONE	DWS/W8/F	NOW £59.50 (was £69.50)
◆ Fine 1000 grit		
◆ Coarse 340 grit	DWS/W8/C	NOW £59.50 (was £69.50)
◆ Extra Coarse 220 grit	DWS/W8/X	NOW £59.50 (was £69.50)

ANGLE GAUGE

Enables external and internal angles to be read direct from a scale.

- Divides top angle in two without changing the setting.
- Ideal for measuring angles when mitre cutting large boards, fillets and architraves.

NEW LOWER PRICE



Product Ref.

A/GAUGE **NOW £37.00**
(was £47.80)

All prices are exclusive of VAT

trend
routing technology

SPECIAL OFFERS WHILE STOCKS LAST

TWO PART PHENOLIC HINGE JIG

12mm thick, solid laminate hinge jig for routing 75mm hinge recesses in internal doors & linings.

- For internal doors 15mm to 51mm thick.
- Includes locating pins, guide bush and bradawls.



Product Ref.

H/JIG/75

NOW £49.00

(was £59.00)

T60 CORDLESS GLUE GUN

Electronic cordless cartridge hot melt glue gun with heating station.

- Immediate initial bond, high final bond strength.
- Polyurethane (PUR) glue for bonding ceramics, marble, metal, glass, wood, various plastics.
- Includes 50g PUR glue cartridge.



Product Ref.

T60

NOW £39.00

(was £59.00)

CAVITY ACCESS KIT

Drill easy access to pipes and cables in chipboard, plywood or sterling board floors in seconds.

- Drills a 102mm (4") diameter hole for easy access to pipes and cables.
- Ideal for builders, plumbers and electricians.



Product Ref.

CAS/KIT

NOW £39.00

(was £65.00)

ANGLE SCREWDRIVER ATTACHMENT

90 degree angled screwdriver attachment allows access to tight corners.

- For use with 25mm insert bits.
- Includes No. 2 pozi insert bit.

**SUITABLE
FOR INSERT
BITS ONLY**

**Trend
Snappy**

The Quick Release Drill System

Product Ref.

SNAP/ASA/1/E

NOW £19.00

(was £29.00)



RECYCLABLE

All prices are exclusive of VAT

© Copyright Trend 2011. Our policy of continuous improvement means that specifications may change without notice. Trend Machinery and Cutting Tools cannot be held liable for any material rendered unusable or any form of consequential loss. E&OE
® All trademarks acknowledged.

See www.trend-uk.com for details

Available from:

trend[®]
routing technology

Trend Machinery & Cutting Tools Ltd.
Odhams Trading Estate
St Albans Road Wotton
WD24 7TR England
Tel: 0044(0)1923 249911
enquiry@trendm.co.uk
www.trend-uk.com

