

NEW PRODUCTS

ADDITIONS TO 2011/12 CATALOGUE **MAY 2012**

NEW



PROFESSIONAL CUTTERS

NEW



CRAFTPRO SHARPENING

NEW



VARIJIG CLAMP GUIDES

NEW



VARIJIG CLAMP GUIDE ACCESSORIES

NEW



TREND SNAPPY PRODUCTS

NEW



CRAFTPRO ROUTER TABLE

NEW CRB COMBINATION ROUTER BASE



INCLUDES SPECIAL OFFERS & PROMOTIONS

PRICES VALID UNTIL 31ST DEC 2012

trend[®]
routing technology

NEW 2012

COMBINATION ROUTER BASE

A quick change, multi-functional router base. Fits most routers with 8mm, 10mm and 12mm diameter rods at 78mm to 130mm centres.

- **Quick Fit Base**
- **Multi-functional**
- **Improved Accuracy**
- **Greater Stability**
- **Superior Finish**
- **Saves Time**



MULTI-FUNCTIONAL

7 FUNCTIONS



1
Offset Base
For better control when edge routing.



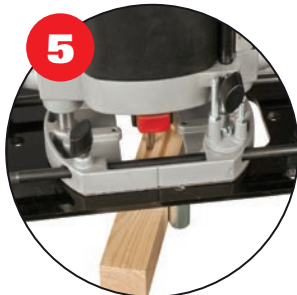
2
Router Compass
For routing circles of 19mm to 224mm radius.



3
Clamp Guide Adjustable Grooving
With 40mm micro adjustment.



4
Anti-tilt Support
For stable edge work. Height range 8mm to 80mm.



5
Offset Mortising
For timber thickness 50mm to 200mm.



6
False Panel Groove Copier
For creating repeated grooves.



7
Varijig Frame System
Anti-tilt facility for panel cutting when used with the Varijig.

+2 MORE FUNCTIONS WITH ACCESSORIES

- **Trim Base with bearing guide follower for flush edge trimming of hardwood lippings Ref. CRB/TB.**
- **Extension Rods for increasing circle radius by 560mm Ref. N/COMPASS/AEX.**



Product Ref.	
CRB	€89.70
Accessories	
CRB/TB (Trim Base)	€31.20
N/COMPASS/AEX (2 pairs extension rod)	€25.12
GB40/B (40mm x 14mm guide bush)	€16.90

Router, cutter, clamp guide and jig accessories not included.

NEW 2012

CRAFTPRO DIAMOND SHARPENING

Our new range of diamond sharpening products for sharpening, deburring or honing a wide range of tools.

- Monocrystalline diamond for fast, clean stock removal.
- Double-sided for coarse sharpening and fine honing.
- Fast, easy to use, durable and versatile.
- Trend Lapping Fluid recommended.
- Fine grade used for cabinet making and carving tools. Fine finish refines the cutting edges of all hand tools, spindle knives, chisels and plane irons. Achieves a razor sharp edge in seconds.
- Coarse grade for carpentry and joinery, rapidly fixes or restores damaged or blunt tools.



CREDIT CARD STONE

A double-sided credit card size diamond stone.

- For router cutters, turning tools etc.
- Excellent sharpening performance.
- Monocrystalline diamonds for fast, clean, stock removal.
- Double-sided for coarse sharpening and fine honing.
- Use with lapping fluid.
- Size: 82mm x 50mm x 0.8mm.



Product Ref.	Grade	Grit	Micron
CR/DWS/CC/FC _ €12.87	◆ Fine	600	25
	◆ Coarse	360	40

4" DOUBLE-SIDED STONE WITH FOLDING HANDLE

A folding handle double-sided diamond 4 inch stone.

- Folding ABS plastic handle to protect diamond surface.
- For sawblades, chisels & knives.
- Oval hole design to collect and hold metal filings.
- Use with lapping fluid.
- Size: 89mm x 20mm x 6mm.



Product Ref.	Grade	Grit	Micron
CR/DWS/F4/FC _ €19.37	◆ Fine	600	25
	◆ Coarse	360	40

BENCH STONE 6" X 2-3/8"

A double-sided diamond bench stone in plastic case.

- For plane irons and chisels.
- Plastic base with non-slip feed and cover.
- Fine side has oval hole design to collect and hold metal filings with clear diamond area for small tools.
- Solid diamond on coarse side.
- Use with lapping fluid.
- Size: 152mm x 61mm x 6mm.



Grade	Grit	Micron
◆ Fine	600	25
◆ Coarse	360	40

Product Ref.
CR/DWS/B6/FC _ €38.87



All prices are exclusive of VAT

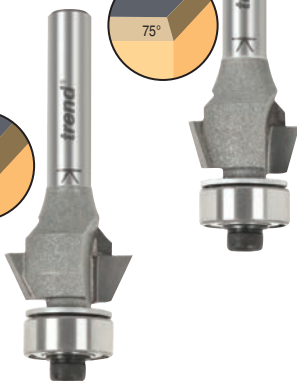
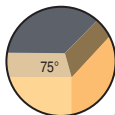
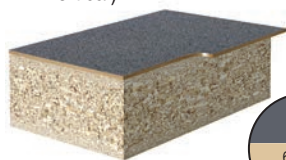
trend
routing technology

NEW CUTTERS

BEARING GUIDED BEVEL TRIMMERS NEW 2012

Tungsten Carbide tipped laminate trimmers. **TCT**

- Two fluted for clean finish.
- Bearing guided for straight or shaped work.
- Cuts a wider edge line. Two angles available 75° (15° from vertical) or 65° (25° from vertical).



Product Ref.

46/6EX1/4TC €25.87

(75° x 15.9mm dia x 6.3mm cut)

46/6FX1/4TC €25.87

(65° x 19.1mm dia x 6.3mm cut)

45 DEGREE 'V' GROOVE ROUTER CUTTERS

Tungsten Carbide tipped for 'V' grooving and edge chamfering.

- Two fluted for clean finish.
- Ideal for panelling.
- Can be used for engraving and sign writing.

FOUR NEW SIZES



Product Ref.

11/2X1/2TC €35.49

(9.5mm dia. x 5mm cut)

11/31X1/4TC €27.30

(12.7mm dia. x 6.55mm cut)

11/32X1/4TC €29.25

(16mm dia. x 8mm cut)

11/30X1/2TC €58.50

(25.4mm dia. x 13mm cut)

NEW

TCT



TEMPLATE OVERSIZE ROUTER CUTTER **TCT**

For Porter-Cable® Latch & Strike Template (59375) and Hinge Template (59370).

- Useful when making jigs, templates and patterns.
- Shank mounted bearing guided.
- Down shear for clean cut.
- Equivalent to Porter-Cable® Ref. 43671.
- 12.7mm diameter x 9.5mm cut with 15.9mm diameter bearing.

NEW



Product Ref.

26/4X1/4TC €32.50

(12.7mm dia x 9.5mm cut)

FOUR FLUTE 90° DOUBLE BEARING GUIDE TRIMMERS

NEW 2012

Four fluted tool with bearing guide on shank and nose. **TCT**

- Four fluted for super fine finish.
- Top and bottom bearing allows template to be either on top or bottom.
- Ideal for irregular grained timber to make profiling easier by turning component other way up.

FOUR FLUTE



Product Ref.

46/501X1/2TC €89.70

(19.1mm dia x 50mm cut)

LINEN FOLD ROUTER CUTTERS NEW

Cutters to create linen fold effect on panels.



- Two fluted for clean finish on timbers.
- Linen fold cutter Ref. 18/96 creates mould for panel and the guided dish cutter Ref. 23/12 creates the scroll effect to finish the linen fold ends.
- A user-made template is required.
- Full instructions included. **TCT**



Ref. 18/96

Ref. 23/12
For scroll effect

Product Ref.

18/96X1/2TC €96.20

Linen fold (25mm dia x 44mm cut)

23/12X1/4TC €51.35

Scroll (R4mm x 12.7mm dia)

TWO FLUTE STRAIGHT ROUTER CUTTER NEW

Two flute Tungsten Carbide tipped cutter for timbers and man-made boards. **TCT**

- For routing grooves and rebates.

Product Ref.

3/52X1/2TC €27.95

(9mm dia x 25mm cut)



3 PIECE KITCHEN FITTERS PACK

NEW

Tungsten Carbide Tipped cutters for routing the worktop joint with a jig and for creating biscuit joint slot.

- Two worktop cutters 12.7mm diameter x 50mm cut length with TC centre tip Ref. TR17D X1/2TC.
- One piece 4mm kerf bearing guided biscuit jointing cutter Ref. TR35X1/2TC for biscuit sizes No. 0, 10 and 20.
- Biscuit cutter is used to reinforce worktop joint using biscuits (not included).

TCT
TUNGSTEN
CARBIDE
TIPPED



3 PIECE SET

Product Ref.

TR/KFP/5 €89.70

CRAFTPRO SAWBLADES

Designed for a professional finish in wood, MDF, particle board, hardboard and plywood.

- Microgranular Tungsten Carbide Tipped to allow cutting of abrasive materials.
- Sawblades for portable saw including plunge saws and mitre saws.



TCT
TUNGSTEN
CARBIDE
TIPPED

IDEAL FOR PLUNGE SAWS

Dewalt DWS520K
Festool TS55EQ
Mafell MT55CC
Makita SP6000K

IDEAL FOR CORDLESS TRIM SAWS

AEG BKS18i

IDEAL FOR MITRE SAWS

Dewalt DW700
Elu PS174

14 NEW SIZES

CRAFTPRO
sawblades

TUNGSTEN CARBIDE TIPPED

DIA.	TEETH	KERF	THICK	BORE	TYPE	HOOK	APPLICATION	FOR MACHINE	PRODUCT REF	PRICE
160	48	2.2	1.6	20	TCP	plus 4°	Trimming of panels*	Festool TS55EQ plunge saw	CSB/PT16048	€ 50.70
160	52	2.2	1.6	20	TCP	neg. 6°	Aluminium and plastic	Festool TS55EQ plunge saw	CSB/AP16052	€ 50.70
160	48	2.2	1.6	20	ATB	plus 15°	Along and across grain	Festool TS55EQ plunge saw	CSB/16048A	€ 30.81
160	28	2.2	1.6	20	ATB	plus 15°	Along and across grain	Festool TS55EQ plunge saw	CSB/16028A	€ 27.30
162	48	1.8	1.2	20	ATB	plus 4°	Along and across grain	Mafell MT55CC plunge saw	CSB/16248	€ 27.30
165	24	1.6	1.0	15.88	ATB	plus 15°	Along and across grain	AEG BKS18Li cordless saw	CSB/16524TC	€ 26.65
165	48	1.6	1.0	15.88	ATB	plus 15°	Along and across grain	AEG BKS18Li cordless saw	CSB/16548TC	€ 27.30
165	64	1.6	1.0	15.88	ATB	plus 15°	Along and across grain	AEG BKS18Li cordless saw	CSB/16564TC	€ 29.90
165	48	2.2	1.6	20	ATB	plus 15°	Along and across grain	Makita SP-6000K plunge saw	CSB/16548B	€ 29.25
165	48	2	1.8	20	TCP	neg. 6°	Aluminium and plastic	Dewalt DWS520K plunge saw	CSB/AP16548	€ 37.70
165	48	2	1.8	20	TCP	plus 4°	Trimming of panels*	Dewalt DWS520K plunge saw	CSB/PT16548	€ 50.70
216	24	2.6	1.7	30	ATB	neg. 5°	Crosscut	Dewalt DW700, Elu PS174 mitre saw	CSB/CC21624	€ 33.54
216	60	2.6	1.7	30	ATB	neg. 5°	Crosscut	Dewalt DW700, Elu PS174 mitre saw	CSB/CC21660	€ 40.95
216	64	2.8	1.9	30	TCP	neg. 6°	Crosscut alloy/plastic	Dewalt DW700, Elu PS174 mitre saw	CSB/AP21664	€ 53.95

* Laminate faceside down.

All prices are exclusive of VAT

trend
routing technology

VARIJIG CLAMP GUI

VARIJIG CLAMP GUIDES

Self clamping, straight line clamp guides that use the Varijig low profile extrusion.

- For accurate guiding of routers, saws and jigsaws.
- Low profile extrusion with integral clamping of work-piece, double locking mechanism and two full length T-slots.
- Common Varijig extrusion to 24 inch (610mm), 36 inch (915mm) and 50 inch (1270mm) Clamp Guides.
- Metric and imperial sliding scale.
- Extrusion profile 16mm high x 54mm wide.
- Ref. VJS/CG/PRO8 is an extra wide clamp 5" (127mm) with four T slots. Ideal for large sheet material. Clamps up to 2.44 metre.
- Jaws have fixing holes for accessories.

Product Ref.		
VJS/CG/24 (24 inch / 610mm)	_____	€35.10
VJS/CG/36 (36 inch / 915mm)	_____	€41.60
VJS/CG/50 (50 inch / 1270mm)	_____	€48.10
VJS/CG/PRO8 (8 foot / 96 inch / 2440mm)	_____	€154.70

Router and cutter not included.



ACCESSORIES

A range of accessories for use with our Varijig Clamp Guides.

ROUTER BASE PLATE

Plunge router base accessory.

- Base plate engages in the T-slot in the extrusion.
- Made from clear plastic.
- Includes adjustable guide bar for perfect tracking using hex key provided.



Product Ref.

VJS/CG/RBP €24.70

SAW BASE PLATE

Circular saw base accessory.

- Base plate engages in the T-slot in the extrusion.
- Includes adjustable guide bar for perfect tracking using hex key provided.



Product Ref.

VJS/CG/SBP €24.70

END STOP BLOCK

Adjustable end stop block.

- Engages in the T-slot on the clamp guide extrusion and can be locked in position using locking knob.



Product Ref.

VJS/CG/ESB €11.70

HANDLE EXTENSION

Lever extension handle for Varijig clamp guides.

- Gives better leverage to operate the clamp, especially when more clamping pressure is required.
- Increases lever length by 134mm.
- Can be fitted and removed quickly.



Product Ref.

VJS/CG/EXT €7.15

DES & ACCESSORIES

SQUARING ATTACHMENT

Allows varijig clamp guide to be squared up for maximum accuracy.

NEW 2012

- Large 90° head allows clamp to be used as a clamping T-square.
- Serrated front edge.
- Includes fixing screws.



Product Ref.

VJS/CG/SQA €12.35

WIDE JAW KIT

NEW 2012

Pair of plastic jaws for fitting onto the jaws of the Varijig clamp guides.

- Distributes clamping pressure over the workpiece to minimise clamping marks.
- Built-in mounting holes allow a batten to be fitted.
- Includes fixing screws.



Product Ref.

VJS/CG/WJK €8.45

SIDE-TO-SIDE CLIPS

Allows two clamp guides to join side-to-side to clamp workpiece to workbench, obstruction free.

NEW MAY 2012

- Clamp one guide to the bench and attach another clamp upside down.
- Two clamps joined together creates a 112mm wide component support surface which is ideal for sanding.
- Six adapters are included so three pairs of clamps can be linked securely together.



SIX CLIPS

Product Ref.

VJS/CG/SSC €16.90

ADJUSTABLE SETTING GUIDE & STOP

A short alloy extrusion rail that can be fixed anywhere along the length of the Varijig clamp guide, so it limits the rail travel in a set position from an edge.



NEW MAY 2012

- Ideal for repetitive grooves.
- Removable alloy adjustable bridge guide stop can be locked in place.
- Bridge travel is 176mm.
- Can be used as a length stop.



Product Ref.

VJS/CG/AGS €16.90

FEATHER BOARD

Feather board finger pressure accessory.

- Clamps to the Varijig clamp guide which can then be easily clamped to a router table top.
- Provides horizontal side pressure.
- Includes fixing kit.



NEW MAY 2012



Product Ref.

VJS/CG/FB €12.35

BACK-TO-BACK CLIPS

NEW MAY 2012

Allows two Varijig clamp guides to be joined back to back.

- Clips comprise of alloy brackets and knobs.
- Raises component up 32mm for unobtrusive clamping especially for full edge mould work.



EIGHT CLIPS



Product Ref.

VJS/CG/BBC €13.00

For Varijig Clamp Guides only. Router and guides not included.

OTHER PRODUCTS IN THE VARIJIG RANGE

VARIJIG FRAME SYSTEM

Adjustable frame and guide for use with a router.

VARIJIG

cat page 158

VARIJIG STRAIGHT GUIDES

For routers, jigsaws and circular saws.

VJS/G/100 (100") cat page 158

VJS/G/35 (35") cat page 159

VARIJIG TENON & GROOVING

Allows grooves and tenons to be cut using a router.

VJS/TG/JIG

cat page 159

VARIJIG ANGLE GUIDE

Variable angle guide for the router or saw.

VJS/AG/36

cat page 160

DIGITAL DEPTH GAUGE

LCD depth gauge for setting tool height in a plunge router, router table and saw bench.

- Opening width 60mm and with 80mm measuring range.
- Metric, imperial and fraction read-out with auto shut off.
- Removable pin for hole depth measuring up to 50.8mm.
- Readout accuracy of +/- 0.1mm.
- Self standing with magnetic feet.
- Includes 3 volt CR2032 battery.

NEW



METRIC & IMPERIAL



Hole Depth



Horizontal Depth

Product Ref. **GAUGE/60** €24.70
Spare Part **BAT/CR2032/3V** €2.60

SAFETY GOGGLES

Superior quality ski style contoured safety goggles.

- Adjustable elastic head strap.
- Ventilation holes and all round eye protection.
- Soft comfortable facial contour.
- Indirect vents.
- Approved to EN166:2001 for high speed particles – medium and liquid splash.

NEW



CONTOURED DESIGN



Ideal for use when routing

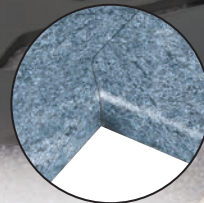


Suitable for use over most spectacles

Product Ref. **SAFE/GOG/B** €11.05

NEW LIMITED EDITION

CRAFTPRO WORKTOP JIGS



Two new worktop jigs for use with 1/2" collet routers.

- Allows precise butt and scribe joints in worktops.
- Quick and easy to use.
- Fixed stop positions of 400mm, 500mm, 600mm, 616mm, 650mm, 700mm and 900mm.
- 12mm thick durable phenolic plastic.
- Alloy location bushes and engraved bush holes for easy identification.

FREE CUTTER
Each jig includes a TCT Worktop Cutter

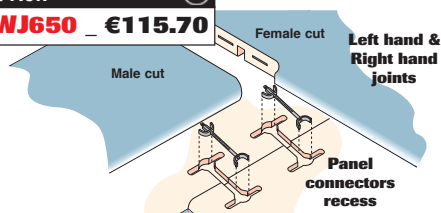


650MM WORKTOP JIG

- Fixed stop positions of 400mm, 500mm, 600mm, 616mm, 640mm and 650mm.



Product Ref. **CR/KWJ650** €115.70



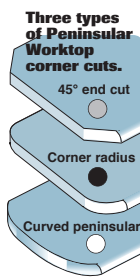
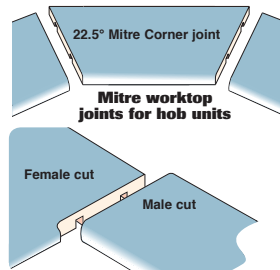
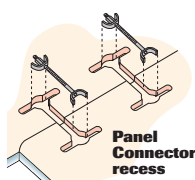
900MM WORKTOP JIG

- Fixed stop positions of 400mm, 500mm, 600mm, 616mm, 650mm, 700mm and 900mm.
- 22.5° mitre corner joint.
- Three types of peninsular cuts including 45° end cut, corner radius and curved peninsular.



Product Ref. **CR/KWJ900** €167.70

Router and guide bush not included.



HEAVY DUTY DOUBLE-SIDED TAPE 25MM x 25 METRE

Rayon cloth coated double-sided tape for temporary fixing.

- Ideal for jig making.
- Rayon cloth coated with rubber resin adhesive for a strong hold.
- Siliconised paper release liner.
- Cut with a knife or scissors. Can be removed with your thumb.
- 25 metre x 25mm width x 0.25mm thick.

NEW 2012



Product Ref.

DS/TAPE/A €14.30

EURO STYLE GUIDE BUSHES

- Metal guide bushes.
- Two new sizes.
- 24mm Ø x 10mm spigot for Varijig.
- 40mm Ø x 14mm spigot for Varijig Frame System for false panels. Accepts panel cutters up to 32mm diameter.

NEW 2012



Product Ref.

GB24/A (24mmØ x10mm) €16.90

GB40/B (40mmØ x14mm) €16.90

NO-VOLT RELEASE SWITCH 115 VOLT

NEW 2012

The main function is the remote switching of power tools such as routers when mounted in a router table and can be placed in a convenient position.

- Trips power to the machine should power be momentarily cut off.
- Plug cable 0.7 metre in length.
- Socket cable 0.5 metre in length.
- 16 amp plug and socket.
- Max. load 12 amp.
- Can be mounted to CRT/MK3.



Product Ref.

NVRS/2/115V €58.50

115 VOLT

MINI HEX KEY SET

16 mini hex keys for router cutter use.

- Chrome-vanadium.
- Metric and imperial hex keys.
- Metric sizes 0.7mm, 0.9mm, 1.3mm, 1.5mm, 2mm, 2.5mm & 3mm A/F.
- Imperial sizes 0.028", 0.036", 0.05", 1/16", 5/64", 3/32", 7/64", 1/8" & 9/64" A/F.
- Ideal for router cutters, modellers, engineers, automotive, DIY, electronics etc.

NEW



Product Ref.

HK/SET/A €5.85

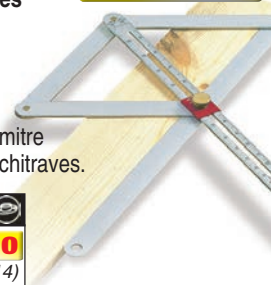
16 PIECE

ANGLE GAUGE

Enables external and internal angles to be read direct from a scale.

- Divides top angle in two without changing the setting.
- Ideal for measuring angles when mitre cutting large boards, fillets and architraves.

NEW LOWER PRICE



Product Ref.

A/GAUGE **NOW €48.10**
(was €62.14)

DOWEL CENTRE POINTS

NEW

Six pack of metal dowel centres that fit into blind holes to allow lining up of the mating hole for wooden dowels.

- Pairs of 6mm, 8mm and 10mm diameter dowel centres.
- Place end of dowel centre into holes drilled in one piece of wood. Place second piece of wood in required position and press to leave centre mark for the hole.



Product Ref.

DWL/C/PK1 €3.25

6MM, 8MM & 10MM DIA.

SOLID CARBIDE PLANER BLADES

Trend Solid Carbide Planer Blades fit most makes of portable electric planers & are supplied in pairs.

NEW PRICES

- High grade carbide and precision ground.
- Two cutting edges and reversible for extended life.
- Conversion kit required for Ref. PB/29 to fit some planers.
- See Routing Catalogue page 113 for full compatibility.



STC

SOLID TUNGSTEN CARBIDE

Product Ref.

PB/22 (80.0 x 5.0 x 1.2mm) €12.94

PB/25 (80.5 x 5.9 x 1.2mm) €12.94

PB/27 (92.0 x 5.5 x 1.2mm) €15.08

PB/28 (75.5 x 5.5 x 1.1mm) €12.94

PB/29 (82.0 x 5.5 x 1.1mm) €12.94

PB/CK/119 (Conversion Kit for PB/29) €14.34

NOW WITH NAMIC CARBIDE

FOR EXTRA LONG LIFE

DRILL COUNTERSINK WITH ROTATING STOP

Tungsten Carbide tipped drill countersink with non-marring rotating depth stop.

NEW 2012

TCT

- Ideal for decking screws.
- Adjustable countersink depth.



NEW METRIC DRILL SIZES

Product Ref.	Drill Ø	CB Ø	
SNAP/CSDS/4MMT	(4mm x 10mm)		€22.53
SNAP/CSDS/5MMT	(5mm x 12.7mm)		€28.60
SNAP/CSDS/6MMT	(6mm x 12.7mm)		€28.60
Spare Drill Bits Individual			
WP-SNAP/D/4MS	(4mmØ)		€3.42
WP-SNAP/D/5MS	(5mmØ)		€3.42
WP-SNAP/D/6MS	(6mmØ)		€3.42

Other sizes available. Please see catalogue.

8PC MASONRY DRILL SET

Milled one-piece Tungsten Carbide Tipped masonry drill set in tool holder.

8 PIECE

NEW

- For building blocks, mortar and brickwork.
- Diameters 3mm, 4mm, 5mm, 5.5mm, 6mm, 6.5mm, 7mm & 8mm.
- Supplied in tool holder which has Velcro® backed elasticated cartridges to allow layout flexibility.

TCT



Product Ref.	
SNAP/MD3/SET	€24.70

POZI® NO.2 DIAMOND 25MM INSERT BITS

NEW

Torsion zone tips are Diamond and Sapphire particle coated.

3 PACK

- Coating provides optimum torque transfer and secure grip on screw head.
- Nickel coated, hi-grade chrome-vanadium through hardened.



Product Ref.	
SNAP/IPZ2D/3	€7.67

SLOTTED 25MM INSERT BITS

Four popular sizes of slotted bits.

- Hi-grade chrome-vanadium through hardened for ultimate wear resistance.



NEW

Product Ref.		
SNAP/IS45/3	(4.5mm x 0.6mm)	€5.85
SNAP/IS55/3	(5.5mm x 0.8mm)	€5.85
SNAP/IS65/3	(6.5mm x 1.2mm)	€5.85
SNAP/IS8/3	(8mm x 1.6mm)	€5.85

MAGNETIC QUICK CHUCK

Magnetic chuck accepts Trend Snappy shank fittings and insert screwdriver bits.

- Magnet will hold wood screws when used with insert bits.
- 15mm diameter x 60mm long.

NEW PRICE

IMPROVED DESIGN WITH SMALLER BODY DIAMETER

Product Ref.	
SNAP/QCM	€16.77



HOLE COUNTERSINK

- Single flute 82 degree countersink for countersinking holes in wood and man-made boards.



Product Ref.	
SNAP/CSK/1	€12.97

PROFESSIONAL DIAMOND SHARPENING

6" X 2" DOUBLE-SIDED WORKSHOP STONE

Continual diamond surface stone for sharpening, deburring and honing a wide range of tools.

NEW 2012

- Double-sided fine/coarse 6" long x 2" wide.
- Ideal for workshop and site use. Fast, clean stock removal.
- Recommended for use by wood carvers.
- Continuous diamond and bonded to a precision flat pre-plated nickel carbon steel base.
- Supplied with non-slip mat, cleaning block and wallet.
- Use with Trend lapping fluid.
- Size: 152mm x 49mm x 8mm.



Grade	Grit	Micron
◆ FINE	1000	11
◆ COARSE	300	45

Product Ref.	
DWS/W6/FC	€51.35

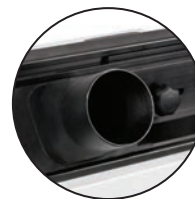
CRAFTPRO **NEW** ROUTER TABLE MK3

The New CraftPro Router Table will suit tradesman, craftsmen and woodworking enthusiasts. It is packed with the necessary features to maximise the versatility of all popular portable routers.

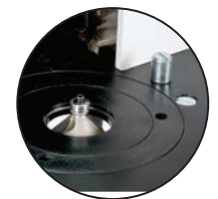
- Laminated MDF table top 610mm x 405mm x 26mm thick with steel legs for bench mounting. Bench height 410mm.
- Removable 6.35mm aluminium insert plate with a 98mm diameter aperture and two insert rings 31.8mm and 67.5mm diameter.
- Pre-drilled for Trend routers, plus for T11 router Quick Raiser and T11 quick release fixing holes.
- Adjustable quick release back-fence with sliding cheeks, clear safety guard and top pressure with 57mm diameter dust spout.
- Lead-on pin for bearing guided work.
- Edge planing facility of 1.4mm or 2.4mm.
- Includes 240 volt no-volt release switch, side finger pressure, pushstick and fully adjustable mitre fence.



Guard Assembly
Fully adjustable.



57mmØ Dust Spout Aperture



Aluminium Plate
6.35mm thick with levelling facility and lead-on pin.



Router and cutter not included.

SAFETY FEATURES

- No-volt Release Switch
- Adjustable Top & Side Pressure
- Adjustable Safety Guard
- Sliding Fence Cheeks
- Two Insert Rings
- Pushstick

VIEW A DISPLAY MODEL AT PARTICIPATING STOCKISTS AROUND THE UK.

See www.trend-uk.com



Edge Planing



Edge Moulding



Product Ref.

CRT/MK3 (240v) €258.70

Accessories

CRT/4

Hose with adaptor 39mm x 3 metre to allow fitting to a dust extractor.

T30/22

Large diameter hose 57mm x 1.5 metre for use with T30 dust extractor.

T11/JT/KIT

T11 router quick release kit to allow quick removal of T11 router.

To fit the following routers directly:

TREND T5, T5 MK2, T9, T10, T11, BOSCH GOF1600A, 1700ACE CMT CMT1E, 2E DEWALT DW613, 614, 615, 620, 621, 624, 625E, 629 DRAPER PT1200V ELU MOF96(E) MK2, 131, 177(E), OF97(E) MAKITA RP0910, 1110C PERLES OF808(E) >1999

Removable aluminium centre plate of table will need to be re-drilled for other makes and models of routers.

Includes:

- 2 x Finger Pressures
- 2 x Insert Rings
- 1 x No-volt Release Switch
- 1 x Mitre Fence
- 1 x Safety Guard
- 1 x Lead-on Pin
- 1 x Pushstick

PROFESSIONAL BENCH STONE PROMOTION

Precision flat continual diamond surfaced stones for sharpening, deburring or honing a wide range of tools.

- Monocrystalline diamond allows clean stock removal.
- Fast, easy to use, durable and versatile.
- Trend Lapping Fluid recommended.

Size and Grade	Product Ref.	Price
7" DOUBLE-SIDED BENCH STONE ♦ Fine 1000 grit ♦ Coarse 340 grit	DWS/B7/FC	NOW €77.35 (was €103.35)
8" DOUBLE-SIDED BENCH STONE ♦ Fine 1000 grit ♦ Coarse 340 grit	DWS/W8/FC	NOW €103.35 (was €116.35)
8" SINGLE-SIDED BENCH STONE ♦ Fine 1000 grit	DWS/W8/F	NOW €77.35 (was €103.35)
♦ Coarse 340 grit	DWS/W8/C	NOW €77.35 (was €103.35)
♦ Extra Coarse 220 grit	DWS/W8/X	NOW €77.35 (was €103.35)



Ideal for:
Planer Blades



Chisels



Knives & Scissors



Use with Lapping Fluid

DIAMOND WHETSTONE KIT

A diamond whetstone kit suitable for sharpening a wide variety of tools.

Includes:

- DWS/B7/FC 7"x 2.5" bench stone with non-slip mat and tool pouch
- DWS/CC/FC Credit card stone
- DWS/LF/100 Lapping fluid
- DWS/BH/B7 Bench holder
- DWS/CB/A Cleaning block

Product Ref.

DWS/KIT/A **NOW €113.75**
(was €141.70)



All prices are exclusive of VAT

trend
routing technology

SPECIAL OFFERS WHILE STOCKS LAST

SRT NO-VOLT RELEASE SWITCH 230V

Trips power to the machine should the power be cut off.

- The main function is the remote switching of power tools such as routers when mounted in a router table and can be placed in a convenient position.
- 230v no-volt release switch for use on user made router tables.
- Maximum load 1850W at 10 amp.
- Fitted with a 13 amp plug.



Product Ref.

WP-SRT/10

€7.33

T60 CORDLESS GLUE GUN

Electronic cordless cartridge hot melt glue gun with heating station.

- Immediate initial bond, high final bond strength.
- Polyurethane (PUR) glue for bonding ceramics, marble, metal, glass, wood, various plastics.
- Includes 50g PUR glue cartridge.



Product Ref.

T60

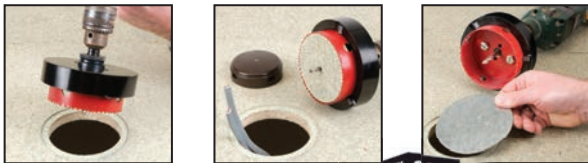
NOW €35.75

(was €76.70)

CAVITY ACCESS KIT

Drill easy access to pipes and cables in chipboard, plywood or sterling board floors in seconds.

- Drills a 102mm (4") diameter hole for easy access to pipes and cables.
- Ideal for builders, plumbers and electricians.



Product Ref.

CAS/KIT

NOW €35.75

(was €84.50)

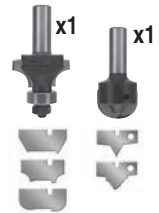
NOVA TIP SETS

Multi-Profile Router Cutter System.

- A variety of interchangeable solid carbide blades.
- The Nova System uses replaceable solid carbide blades offered in a number of profile shape options.
- 1/4" or 1/2" shank sets available.



Includes 5 shapes. 25 extra shapes available at €5.00 each. See website for details.



Product Ref.

NT/SET/ABX1/4

€37.70

NT/SET/ABX1/2

€37.70

See www.trend-uk.com for details



RECYCLABLE

All prices are exclusive of VAT

© Copyright Trend 2012. Our policy of continuous improvement means that specifications may change without notice. Trend Machinery and Cutting Tools cannot be held liable for any material rendered unusable or any form of consequential loss. E&OE
® All trademarks acknowledged.

trend
routing technology

Trend Machinery & Cutting Tools Ltd.
Odhams Trading Estate
St Albans Road Watford
WD24 7TR England
Tel: 0044(0)1923 249911
enquiry@trendm.co.uk
www.trend-uk.com

Available from:



Trend Stockists. Please see website for details.