



# the new router

# 5

# black magic!

*Our new router, the T5, is a powerful compact machine, perfect for light and medium duty applications. Could it become the UK's most popular router?*

**T**he new Trend T5 router has been designed to be the ideal machine to get started with the craft of routing and to offer versatility and performance for the experienced user. It has a classic ergonomic design, combined with an 850 watt variable speed motor. It is easy to use portably and has power to machine dense hardwoods and man-made materials. The electronic speed control gives a 'soft start' which eliminates an initial 'kick-back' typical of older designs.

The T5 has a spindle lock and hex collet nut to make changing cutters simple and safe. A depth gauge and three-position turret stop allow accurate cutting depths to be set or changed quickly and the 50 mm plunge depth is set using the right grip knob.

### **In the box**

The T5 includes all the essential accessories such as a beam trammel,

20mm guide bush, side fence with micro-adjustment, a dust spout, and both 1/4" and 8 mm diameter collets. The 1/4" collet gives compatibility with hundreds of cutters, while the 8mm collet enables larger cutters such as the Router Carver cutter or panelling cutters to be used. Optional accessories include a fine height adjuster and a metal storage case.

### **Simplicity**

The T5 is supplied with valuable sources of information for new users, experienced craftsmen and building trade professionals. A comprehensive instruction manual explains the essentials of how to set-up and use the machine. In addition, a set of our four colour booklets covers all aspects of routing including using popular cutters, home improvement projects and advanced techniques such as making panel doors. Simply by returning the warranty card, a free copy of our latest video 'The Trend Routing System' will be supplied.



This video explains and demonstrates the T5 router as well as other new products including the DJ300 Dovetail jig, the MINIMACH and the forthcoming T9 router. The literature and video can also be ordered separately.

The instruction manual contains a full listing of all the T5 spares which are readily available, and the machine is supported by a network of service agents throughout the UK.

### **Compatibility**

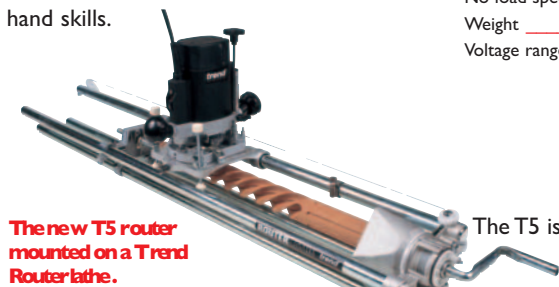
On its own, the T5 will perform many routing operations. However, combined with our jigs and accessories it forms the key component of a workshop system to make routing more creative and productive. Jigs such as the



Craftsman Router Table, DJ300  
Dovetail Jig, Routerlathe, Pivot Frame  
Jig and the Routercarver can all be  
used with the T5 to accomplish many  
woodworking tasks, without the need  
for complex  
hand skills.

### Specifications

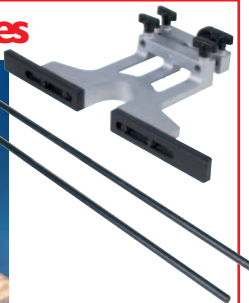
Plunge stroke \_\_\_\_\_ 0-50mm  
Power input \_\_\_\_\_ 850 watts  
Standard collet dia. \_\_\_\_\_ 1/4" & 8mm  
No load speeds \_\_\_\_\_ 9,000-27,000 rpm  
Weight \_\_\_\_\_ 2.7kg (6lbs)  
Voltage range \_\_\_\_\_ 115 & 240 volts



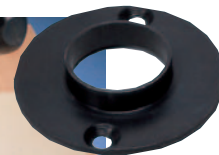
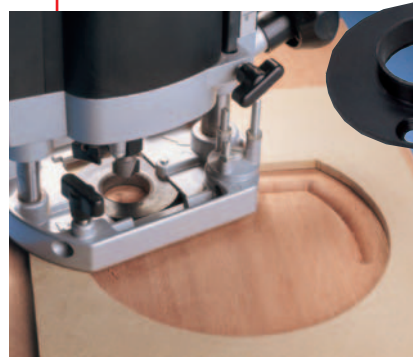
**The new T5 router mounted on a Trend Routerlathe.**  
For the building professional the  
T5 will also be available soon in a 115  
volt version making it ideal for use on  
site, especially with products such as  
the Hinge Jig and Routabout.

The T5 is the first of the Trend T  
series routers. With  
features and accessories for almost  
every routing application, it seems  
destined to become the preferred  
portable router for craftsmen and  
professional users. **IP**

### Standard Accessories



Edge moulding using the **side fence** as a guide.



Template routing with the router fitted with the **guide bush** supplied.



Cutting circles using the **beam trammel** attachment.



**Dust extraction spout** for connection to a dust extractor.

### Optional Accessories



**Fine Height Adjuster  
FHA/001**

**Metal Storage Case**  
Divisions and  
space for cutters  
and accessories.  
**CASE/T5**

