

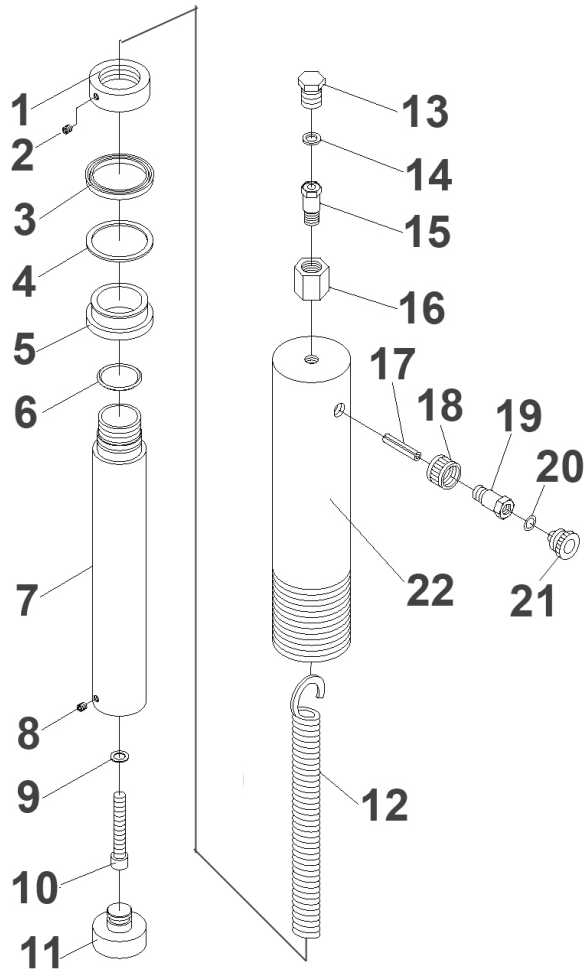
Item	Part No.	Description
1	YK20F.V3-01	Pressure gauge 'btm fitting'(od 110mm)
2	YK759FAH.61	Nylon ring
3	YK20FAH.RC	Hydraulic ram complete.
4	GSM66.S	Grub screw m6x6 (single)
5	YK30F.13	Serrated saddle
6	YK20FAH.06	Round nut, upper ring
7	YK20F.V3-07	Plate
8	YK20F.V3-08	Upper nut
9	SS1635.S	Hex head set screw m16x35mm single
10	YK20F.V3-10	Upper beam
11	SN16.S	Steel nut m16 zinc din934(single)
12	SWM16.S	Spring washer m16 zinc (single)
13	FWM16.S	Flat washer m16 single
14	FWM10.S	Flat washer m10 single
15	SWM10.S	Spring washer m10 zinc (single)
16	SN10.S	Steel nut m10 zinc din934(single)
17	YK20F.V3-17	V block (190x100x30)
18	YK20F.V3-18	Bed frame
19	YK20F.V3-19	Pin, table support 250x25mm
20	YK20F.20	Post
21	YK20F.21	Base section

Item	Part No.	Description
22	FWM12.S	Flat washer m12 single
23	SWM12.S	Spring washer m12 zinc (single)
24	SN12.S	Steel nut m12 zinc din934(single)
25	SS1230.S	Hex head set screw m12x30mm single
26	YK20F.V3-26	Lower support
27	YK20FAH.27	Bolt m10x130
28	YK20F.V3-28	Bushing
29	YK20F.29	Screw m8x15 so
30	YK20F.30	Washer
31	YK20F.V3-31	Support plate
32	YK20F.V3-32	Pump ass'y
33	YK20F.V3-33	Handle
34	YK20F.34	Oil filler nut
35	RE97.10-03	Hose Assembly
36	YK20F.36	Hose fitting
37	YK20FAH.R19	Coupler
38	YK20FAH.R15	Gauge coupler
--	YK509FAH.60	Deep nut (NOT SHOWN)
--	YK20FAH.60	Support (NOT SHOWN)
--	YK20F.FK	Fixing kit (contains nuts, bolts etc.) (NOT SHOWN)

NOTE: It is our policy to continually improve products and as such we reserve the right to alter data, specifications and component parts without prior notice.

IMPORTANT: No liability is accepted for incorrect use of product.

WARRANTY: Guarantee is 12 months from purchase date, proof of which will be required for any claim.



Item	Part No.	Description
1	YK20FAH.R01	Circular nut
2	YK20FAH.R02	Grub screw m6x6
3	YK20FAH.R03	Sealing ring
4	YK20FAH.R04	Ring
5	YK20FAH.R05	Bushing
6	YK20FAH.R06	O-ring
7	YK20FAH.R07	Ram
8	YK20FAH.R08	Screw m6x10 / Screw m6x10
9	YK20FAH.R09	Sealing washer
10	YK20FAH.R10	Bolt m10
11	YK20FAH.R11	Toe

Item	Part No.	Description
12	YK20FAH.R12	Spring
13	YK20FAH.R13	Screw
14	YK759FAH.61	Nylon ring
15	YK20FAH.R15	Gauge coupler
16	YK509FAH.60	Deep nut
17	YK20FAH.R17	Pin
18	YK20FAH.R18	Connection nut
19	YK20FAH.R19	Coupler
20	YK20FAH.R20	O-ring
21	YK20FAH.R21	Dust cap
22	YK20FAH.R22	Cylinder

NOTE: It is our policy to continually improve products and as such we reserve the right to alter data, specifications and component parts without prior notice.

IMPORTANT: No liability is accepted for incorrect use of product.

WARRANTY: Guarantee is 12 months from purchase date, proof of which will be required for any claim.