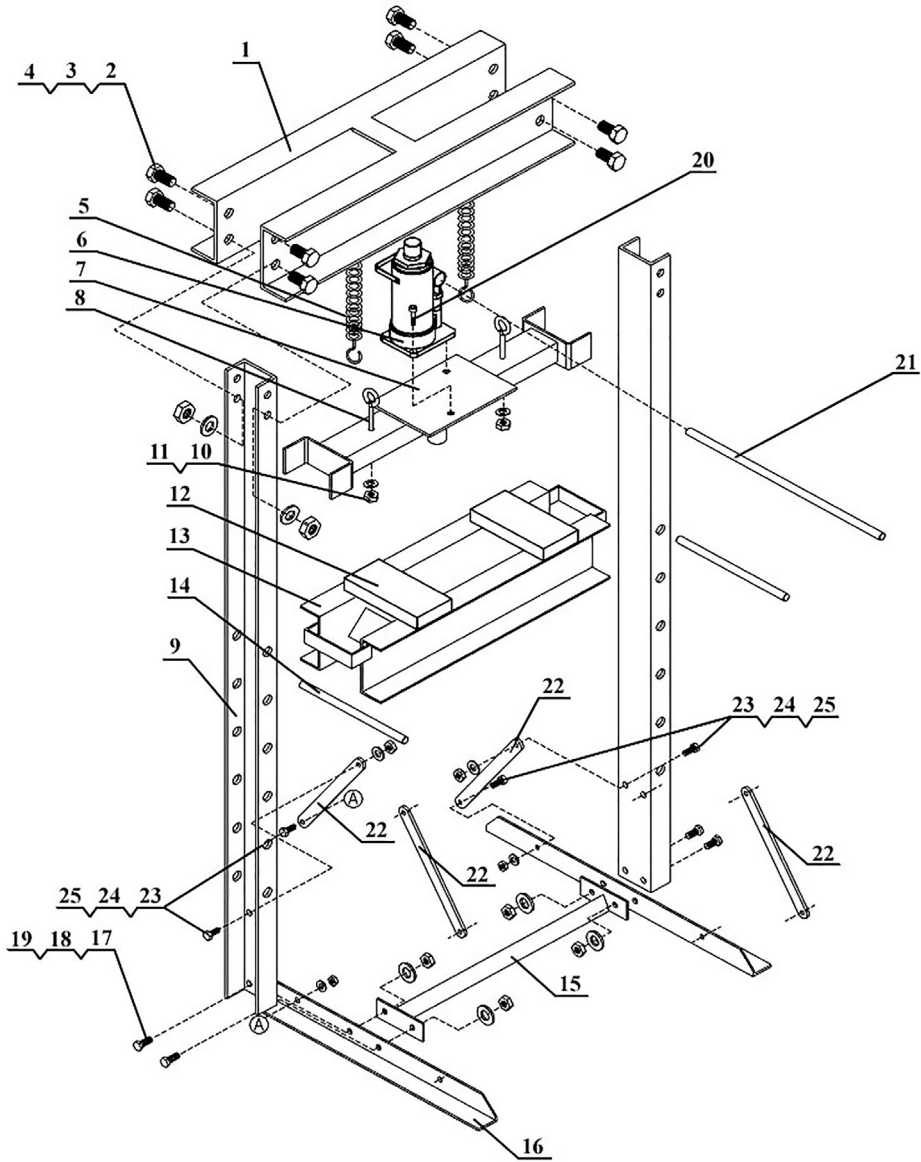


Parts Information:  
**Hydraulic Press 20tonne Economy Floor Type**  
**Model No: YK20ECF.V2**



Item	Part No.	Description
1	YK20ECF.01	Upper Support
2	SS1635.S	Hex Head Set Screw M16 X 35 Zinc
3	FWM16.S	Flat Washer M16 Zinc
4	SN16.S	Steel Nut M16 Zinc
5	YK20ECF.05	Spring Dia 35.3mm
6	YK20ECF.06	Hydraulic Unit
7	YK20ECF.07	Support Plate
8	YK20ECF.08	Hook Pin
9	YK20ECF.09	Upright
10	FWM8.S	Flat Washer M8 Zinc
11	SN8.S	Steel Nut M8 Zinc
12	YK20F.V3-17	V block (190x100x30)
13	YK20ECF.13	Table

Item	Part No.	Description
14	YK20ECF.14	Pin, Table Support 250x20mm
15	YK20ECF.15	Base Support
16	YK20F.21	Base Section
17	SS1230.S	Hex Head Set Screw M12 X 30 Zinc
18	FWM12.S	Flat Washer M12 Zinc
19	SN12.S	Steel Nut M12 Zinc
20	SS812.S	Hex Head Set Screw M8 X 12 Zinc
21	YK20ECF.21	Handle
22	YK20FAH.60	Brace
23	SS1025.S	Hex Head Set Screw M10 X 25 Zinc
24	FWM10.S	Flat Washer M10 Zinc
25	SN10.S	Steel Nut M10 Zinc

**NOTE:** It is our policy to continually improve products and as such we reserve the right to alter data, specifications and component parts without prior notice.

**IMPORTANT:** No liability is accepted for incorrect use of product.

**WARRANTY:** Guarantee is 12 months from purchase date, proof of which will be required for any claim.