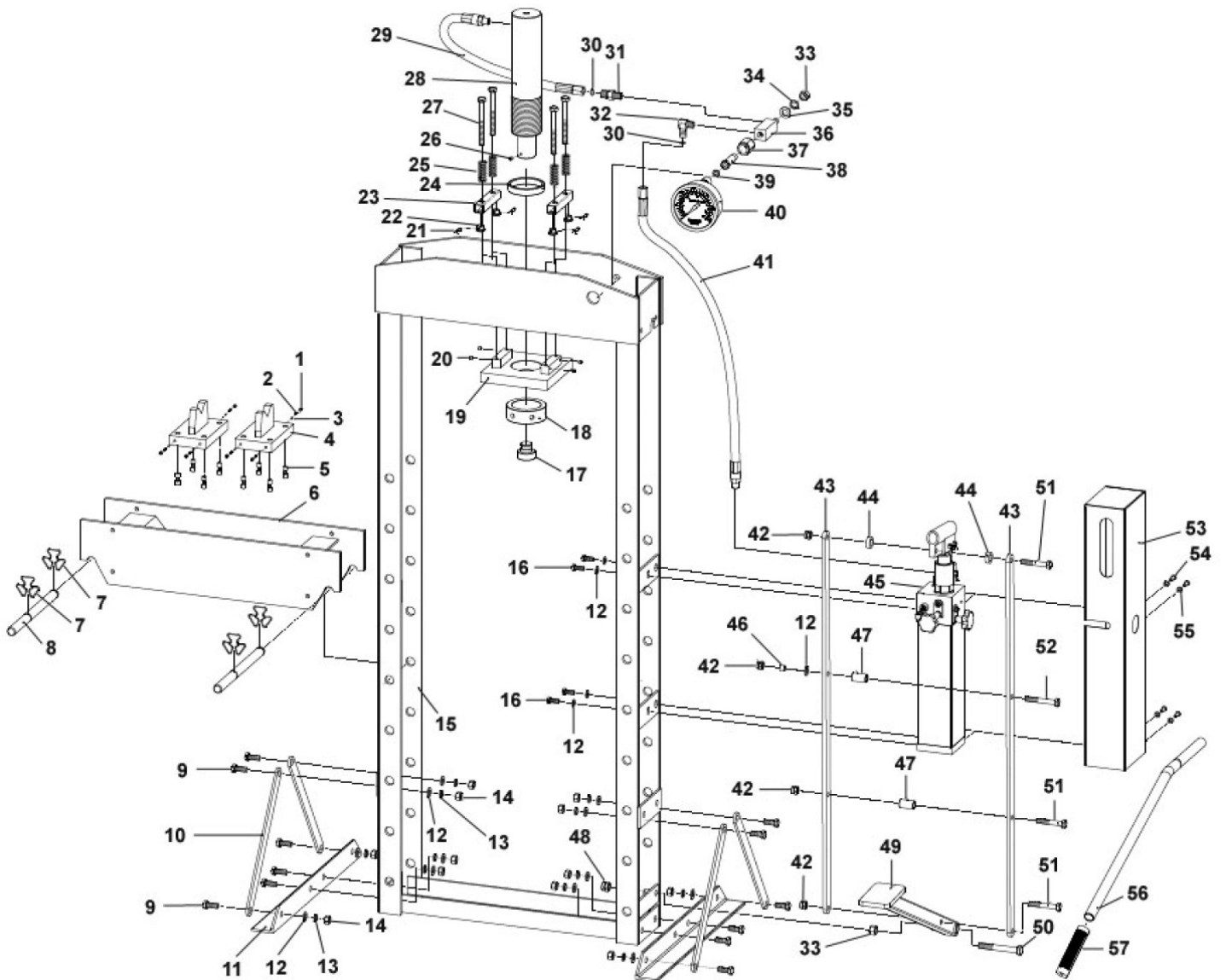


Parts Information:
**Hydraulic Press Premier 15tonne Floor
 Type with Foot Pedal**
Model No: YK15FFP



| Item | Part No. | Description |
|------|------------|-----------------------------|
| 1 | GSM88.S | Grub Screw M8x8 (Single) |
| 2 | YK15FFP.02 | Spring Dia 5mm |
| 3 | SB-5.6 | Steel Ball 5.6mm |
| 4 | YK15FFP.04 | V-Block |
| 5 | YK15FFP.05 | Screw |
| 6 | YK15FFP.06 | Bed Frame |
| 7 | YK15BP.07 | Retaining Clip |
| 8 | YK15BP.08 | Pin, Table Support 265x19mm |
| 9 | YK15FFP.09 | Bolt |
| 10 | YK30FFP.10 | Support |
| 11 | YK15FFP.11 | Base Section |
| 12 | YK15FFP.12 | Washer |

| Item | Part No. | Description |
|------|------------|------------------|
| 13 | YK15FFP.13 | Lock washer |
| 14 | YK15FFP.14 | Nut |
| 15 | YK15FFP.15 | Frame |
| 16 | YK15FFP.16 | Bolt |
| 17 | YK15FFP.17 | Serrated Saddle |
| 18 | YK15FFP.18 | Ram Nut |
| 19 | YK15FFP.19 | Under Plate |
| 20 | YK15FFP.20 | Screw |
| 21 | YK30FFP.24 | R-Pin |
| 22 | YK30FFP.23 | Slide Block |
| 23 | YK15FFP.23 | Connecting Plate |
| 24 | YK15FFP.24 | Upper Round Nut |

NOTE: It is our policy to continually improve products and as such we reserve the right to alter data, specifications and component parts without prior notice. There may be alternative versions of this product, please contact us should you require this information.

IMPORTANT: No liability is accepted for incorrect use of product. Spare parts must be fitted by a competent person

WARRANTY: Guarantee is 12 months from purchase date, proof of which will be required for any claim.



Parts Information:
**Hydraulic Press Premier 15tonne Floor
Type with Foot Pedal
Model No: YK15FFP**

| Item | Part No. | Description |
|------|-------------|--------------------------------------|
| 25 | YK15FFP.25 | Spring Dia 16.2mm |
| 26 | GSM68.S | Grub Screw M6 x 8 |
| 27 | HHB10100.S | Hex Head Bolt M10 x 100mm |
| 28 | YK15FFP.28 | Ram |
| 29 | YK15FFP.29 | Oil Hose (For Ram)20mm x 600mm |
| 30 | SA802.23 | O-Ring, (Ex: 9.63 In: 6.07 Cs: 1.78) |
| 31 | YK50FFP.62 | Joint |
| 32 | YK50FFP.45 | Elbow Fitting |
| 33 | YK15FFP.33 | Nut |
| 34 | YK15FFP.34 | Lock Washer |
| 35 | YK15FFP.35 | Washer |
| 36 | YK15FFP.36 | Union Seat |
| 37 | YK50FFP.56 | Union Nut |
| 38 | YK50FFP.57 | Union Screw |
| 39 | YK759FAH.61 | Nylon Ring |
| 40 | YK15FFP.40 | Pressure Gauge |
| 41 | YK15FFP.41 | Oil Hose (For Pump 14.8mm x 690mm) |

| Item | Part No. | Description |
|------|------------|-------------------------------|
| 42 | YK15FFP.42 | Nut |
| 43 | YK50FFP.68 | Support |
| 44 | YK50FFP.80 | Bushing |
| 45 | YK15FFP.45 | Pump |
| 46 | YK50FFP.69 | Bushing |
| 47 | YK50FFP.70 | Bushing |
| 48 | YK15FFP.48 | Nut |
| 49 | YK50FFP.75 | Foot Pedal |
| 50 | HHB1290.S | Hex Head Bolt M12 x 90mm |
| 51 | YK15FFP.51 | Bolt |
| 52 | YK15FFP.52 | Bolt |
| 53 | YK20FFP.54 | Protective Housing For Pump |
| 54 | YK15FFP.54 | Screw |
| 55 | YK15FFP.55 | Washer |
| 56 | YK50FFP.85 | Handle |
| 57 | YK50FFP.86 | Handle Grip |
| -- | YK50FFP.79 | Spring Dia 22.6mm (Not Shown) |

NOTE: It is our policy to continually improve products and as such we reserve the right to alter data, specifications and component parts without prior notice. There may be alternative versions of this product, please contact us should you require this information.

IMPORTANT: No liability is accepted for incorrect use of product. Spare parts must be fitted by a competent person

WARRANTY: Guarantee is 12 months from purchase date, proof of which will be required for any claim.

Sealey Group, Kempson Way, Suffolk Business Park, Bury St Edmunds, Suffolk. IP32 7AR



01284 757500



sales@sealey.co.uk



www.sealey.co.uk