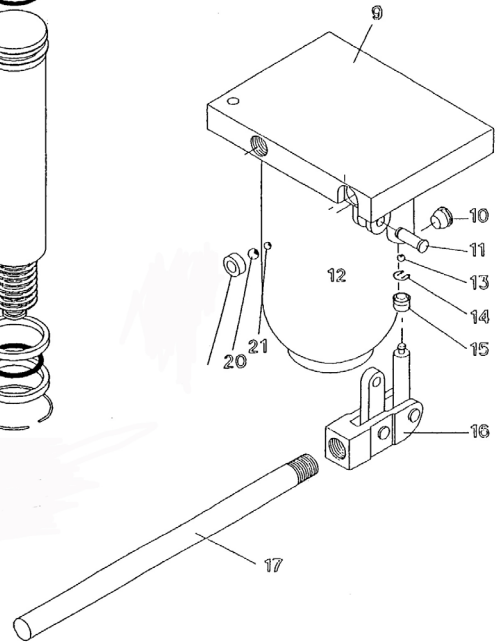
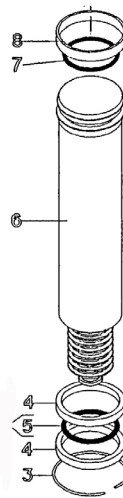
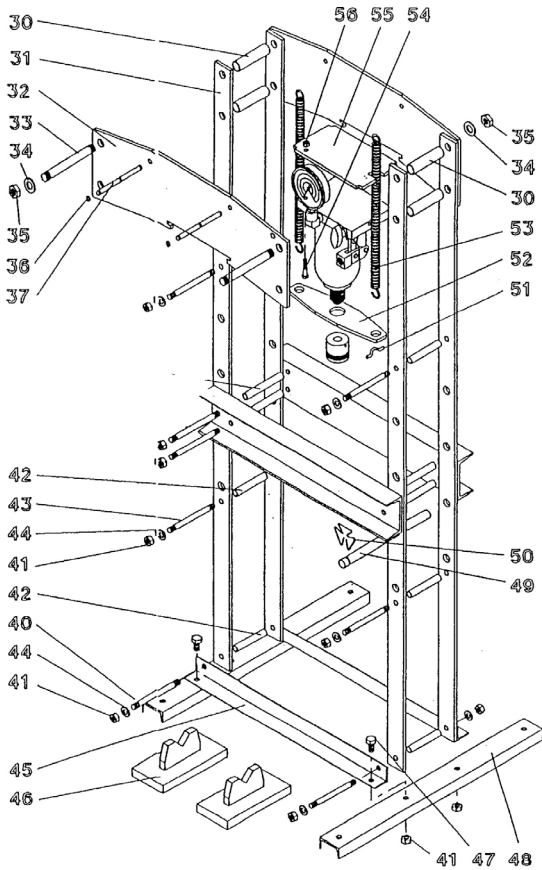




Parts Information:
**Hydraulic Press 15tonne Bench Type
without Gauge
Model No: YK15BLG**



NOTE: It is our policy to continually improve products and as such we reserve the right to alter data, specifications and component parts without prior notice.

IMPORTANT: No liability is accepted for incorrect use of product.

WARRANTY: Guarantee is 12 months from purchase date, proof of which will be required for any claim.

Sealey Group, Kempson Way, Suffolk Business Park, Bury St Edmunds, Suffolk. IP32 7AR



01284 757500



01284 703534



sales@sealey.co.uk



www.sealey.co.uk



Parts Information:
**Hydraulic Press 15tonne Bench Type
 without Gauge
 Model No: YK15BLG**

Item	Part No.	Description
--	GSM610.S	GRUB SCREW M6x10 (SINGLE) (NOT SHOWN)
--	YK15/1108	PISTON HEAD (NOT SHOWN)
3	MG-15/1361	RING
4	MG-15/1102	RING
5	MG-15/1131	O-RING
6	MGK15/UNIT	MGK15/HYD UNIT HYD. UNIT W/O GAUGE
7	MG-15/1134	O-RING
8	MG-15/1164	RING
9	YK15BLG/09	CASING
10	ME-12001/1139	FILLER PLUG
11	MG-2/1344	AXLE
12	MB-22-A/1286	CIRCLIP
13	SB-5.6	STEEL BALL 5.6mm
14	MG-2/1161	CIRCLIP
15	MG-2/1133	SEAL
16	MGK/16	HANDLE SOCKET
17	BM-3-C21M	PUMPING HANDLE
--	YK50FM/03	RELEASE VALVE KNOB (NOT SHOWN)
--	MG-2/1130	O-RING (NOT SHOWN)
20	SB-8.0	STEEL BALL 8.0mm
21	SB-5.6	STEEL BALL 5.6mm
--	MGK/22	ELBOW JOINT (NOT SHOWN)
--	MB-22-A/1130	O-RING (NOT SHOWN)
--	ME-3001/1348	O-RING (NOT SHOWN)
--	YK15BLG/25	PLUG (NOT SHOWN)
--	YK15BLG/27	SEAL (NOT SHOWN)
--	YK15BLG/28	SEAL (NOT SHOWN)
--	YK15BLG/29	MAIN PISTON (NOT SHOWN)
30	YK15BLG/30	SPACER
31	YK15BLG/31	UPRIGHT

Item	Part No.	Description
32	YK15BLG/32	CROSS PLATE
33	YK15BLG/33	STUD
34	FWM18.S	FLAT WASHER M18 SINGLE
35	TJM-2/1397	NUT
36	ME-1002/1179	CIRCLIP
37	KMM-15/1376	AXLE
38	YK15BLG/38	SPACER
39	YK15/1334	TABLE COMPLETE
40	YK15BLG/40	STUD
41	SN12.S	STEEL NUT M12 ZINC DIN934(SINGLE)
42	YK15BLG/42	SPACER
43	YK15BLG/43	STUD
44	FWM12.S	FLAT WASHER M12 SINGLE
45	YK15BM/52	CROSS SECTION
46	KMG-15A/C15	V BLOCK
47	KP-30/1948-A	BOLT
48	YK15BLG/48	FOOT
49	YK15BLG/49	TABLE SUPPORT PIN
50	YK15BLG/50	CLIP
51	YK15/1383	SPRING SECURING PIN
52	YK15BLG/52	BASE PLATE
53	YK15/1240	SPRING
54	EF-1.5/1315	BOLT M8X40
55	YK15BLG/55	TOP PLATE
56	YK15BLG/56	NUT
--	A-5110	GAUGE 700kg/cm2,100mm OD, Back Fitting. (NOT SHOWN)
--	RKMG-15	REPAIR KIT (NOT SHOWN)
--	MGK15/UNIT	MGK15/HYD UNIT HYD. UNIT W/O GAUGE (NOT SHOWN)

NOTE: It is our policy to continually improve products and as such we reserve the right to alter data, specifications and component parts without prior notice.

IMPORTANT: No liability is accepted for incorrect use of product.

WARRANTY: Guarantee is 12 months from purchase date, proof of which will be required for any claim.

Sealey Group, Kempson Way, Suffolk Business Park, Bury St Edmunds, Suffolk. IP32 7AR



01284 757500



01284 703534



sales@sealey.co.uk



www.sealey.co.uk