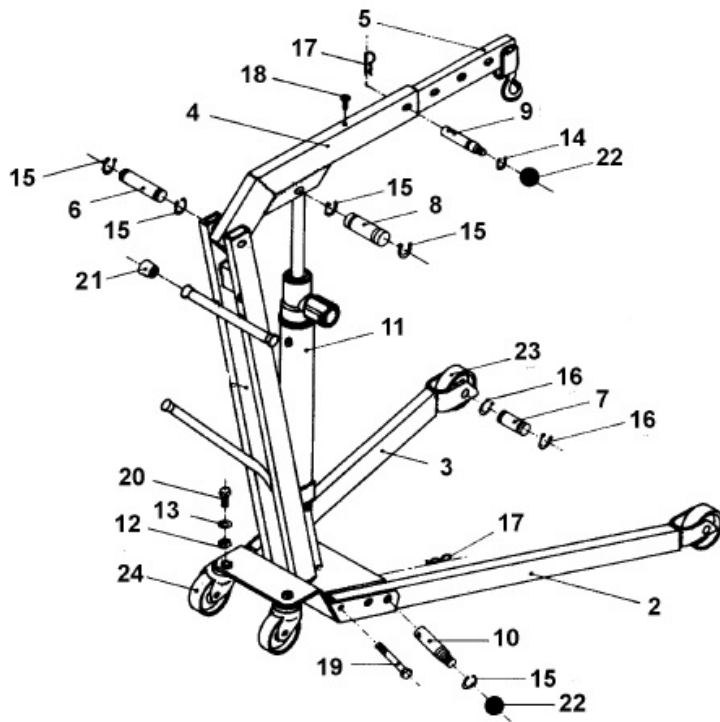


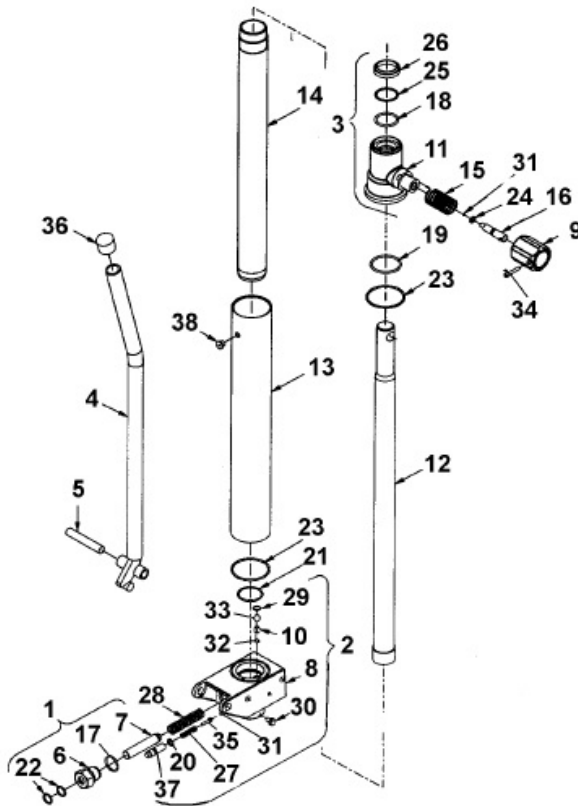


Parts Information:
Folding Engine Crane Premier Viking
1.1tonne
Model No: WF10.V2

FOLDING
ENGINE
CRANE



PUMP
FOR
WF10.V2



NOTE: It is our policy to continually improve products and as such we reserve the right to alter data, specifications and component parts without prior notice.

IMPORTANT: No liability is accepted for incorrect use of product.

WARRANTY: Guarantee is 12 months from purchase date, proof of which will be required for any claim.

Sealey Group, Kempson Way, Suffolk Business Park, Bury St Edmunds, Suffolk. IP32 7AR



01284 757500



01284 703534



sales@sealey.co.uk



www.sealey.co.uk



Parts Information:
Folding Engine Crane Premier Viking
1.1tonne
Model No: WF10.V2

FOLDING ENGINE CRANE

Item	Part No.	Description
2	100/1700200	RIGHT LEG
3	100/1700300	LEFT LEG
4	100/1700400	MAIN JIB
5	100/1700500	EXTENSION JIB
6	100/1700600	AXLE,MAST/JIB
7	100/1600800	AXLE
8	100/1700700	AXLE
9	100/1000600	SPIKE FOR ARM
10	100/5000300	SPIKE FOR LEG
11	100/9084500	HYDRAULIC UNIT (WF10/DMC)
12	SN12.S	STEEL NUT M12 ZINC DIN934(SINGLE)
13	FWM12.S	FLAT WASHER M12 SINGLE

Item	Part No.	Description
14	100/02203	CIRCLIP
15	100/02204	CIRCLIP
16	100/02224	CIRCLIP
17	100/02239	CLIP
18	100/02281	SCREW
19	100/02283	BOLT
20	100/02321	BOLT M12X40
21	100/02374	PLASTIC PLUG
22	100/02380	BAKELITE BALL
23	100/02443	WHEEL, FIXED (125x15x38)
24	100/02449	WHEEL, CASTOR (125x9x38x155)

PUMP FOR WF10.V2

Item	Part No.	Description
1	100/9083100	PUMP PISTON, COMPLETE
2	100/9083200	PUMP BLOCK, COMPLETE
3	100/9083300	CYLINDER NUT, COMPLETE
4	100/9083600	PUMP LEVER
5	100/9083700	AXLE FOR PUMP LEVER
6	100/9052700	PUMP PISTON GUIDE
7	100/9055700	PUMP PISTON
8	100/9060900	PUMP BLOCK COMPLETE
9	100/9061100	RELEASE HANDLE
10	100/9061200	VALVE WEIGHT
11	100/9061300	CYLINDER NUT
12	100/9062100	PISTON ROD
13	100/9062200	RESERVOIR
14	100/9062300	CYLINDER TUBE
15	100/9062400	SPRING
16	100/9062800	VALVE SPINDLE
17	100/01004	O-RING
18	100/01017	O-RING
19	100/01020	O-RING
20	100/01040	O-RING

Item	Part No.	Description
21	100/01058	O-RING
22	100/01069	O-RING
23	100/01070	O-RING
24	100/0108600	O-RING
25	100/0115600	BACK-UP RING
26	100/01264	SCRAPER RING
27	100/02038	SPRING
28	100/02039	RELEASE SPRING
29	100/02214	CIRCLIP
30	100/02281	SCREW
31	SB-4.7	STEEL BALL 4.7mm
32	SB-6.4	STEEL BALL 6.4mm
33	SB-11.0	STEEL BALL 11.0mm
34	SCB530.S	SOCKET CAP BOLT ZINC M5X30
35	100/02340	BOLT
36	100/02370	PLASTIC PLUG
37	100/02384	ADJUSTING SCREW
38	100/02448	OIL FILLING PLUG
--	100/0903800	REPAIR KIT (NOT SHOWN)

NOTE: It is our policy to continually improve products and as such we reserve the right to alter data, specifications and component parts without prior notice.

IMPORTANT: No liability is accepted for incorrect use of product.

WARRANTY: Guarantee is 12 months from purchase date, proof of which will be required for any claim.

Sealey Group, Kempson Way, Suffolk Business Park, Bury St Edmunds, Suffolk. IP32 7AR



01284 757500



01284 703534



sales@sealey.co.uk



www.sealey.co.uk