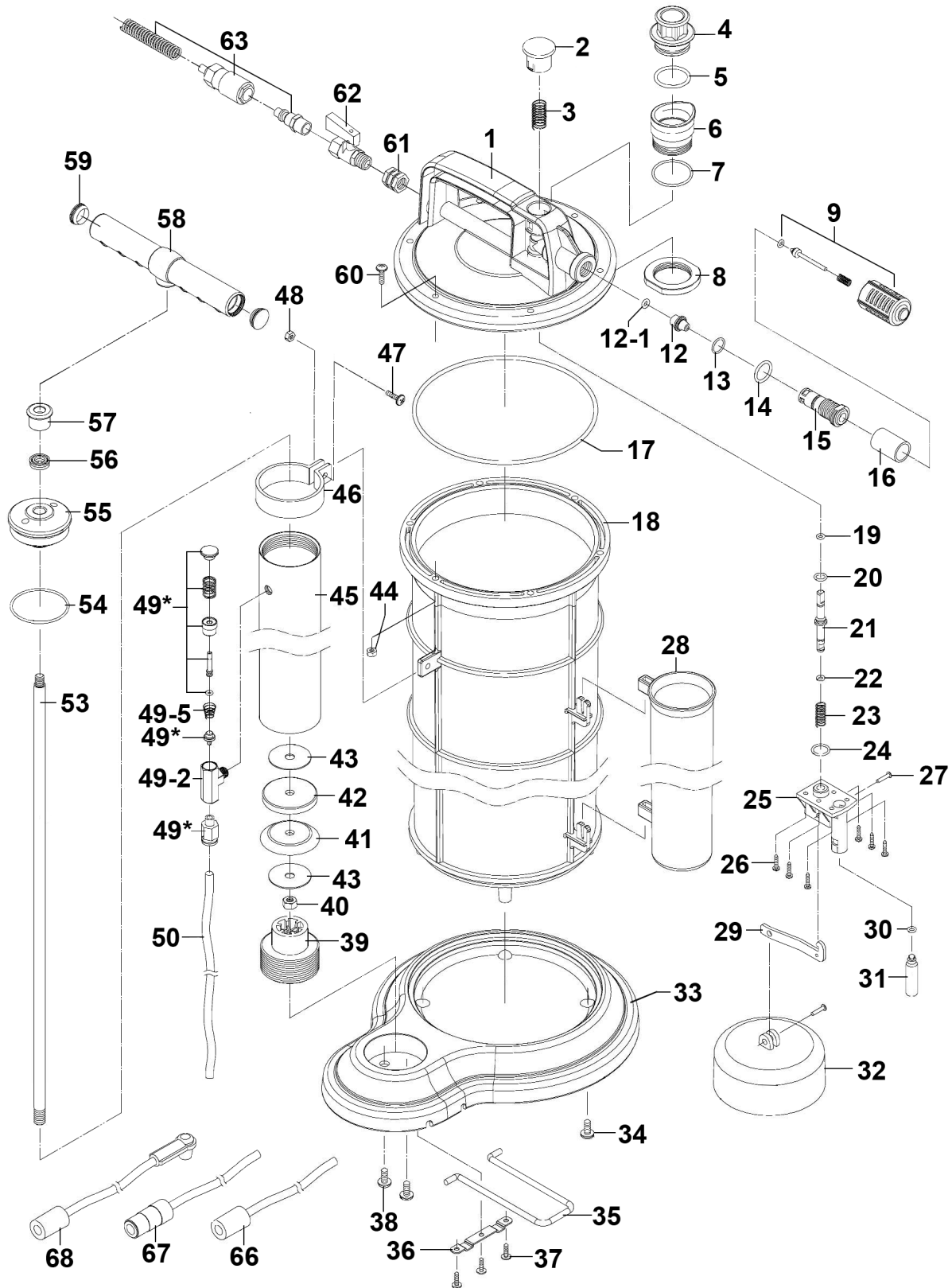




Parts Information:
Vacuum Oil & Fluid Extractor Manual/Air
9L
Model No: TP6904



NOTE: It is our policy to continually improve products and as such we reserve the right to alter data, specifications and component parts without prior notice. There may be alternative versions of this product, please contact us should you require this information.

IMPORTANT: No liability is accepted for incorrect use of product. Spare parts must be fitted by a competent person

WARRANTY: Guarantee is 12 months from purchase date, proof of which will be required for any claim.

Sealey Group, Kempson Way, Suffolk Business Park, Bury St Edmunds, Suffolk. IP32 7AR



01284 757500



01284 703534



sales@sealey.co.uk



www.sealey.co.uk



Parts Information:
Vacuum Oil & Fluid Extractor Manual/Air
9L
Model No: TP6904

Item	Part No.	Description
1	TP6903.V2-01	Cover Housing
2	TP6903.V2-02	Push Button
3	TP6903.V2-03	Spring Dia 12.9mm
4	TP6903.V2-04	Fluid Inlet Coupler
5	TP6901.V2-05	O-Ring, (Ex: 29.26 In: 26.64 Cs: 2.62)
6	TP6901.V2-06	Fluid Outlet Housing
7	TP6901.V2-07	O-Ring, (Ex: 28.71 In: 25.15 Cs: 1.54)
8	TP6901.V2-08	Lock Nut
9	PX90-07	Muffler Body Ass'y
12	TP6903.V2-12	Vacuum Valve
12-1	TP6903.V2-11	O-Ring, (Ex: 8.51 In: 5.45 Cs: 1.53)
13	TP6903.V2-13	O-Ring, (Ex: 15.20 In: 11.14 Cs: 2.03)
14	VS3900.03	O-Ring, (Ex: 17.56 In: 14 Cs: 1.78)
15	TP6903.V2-15	Vacuum Body
16	PX55-10	Muffler Insert
17	TP6901.V2-17	O-Ring, (Ex: 159.05 In: 151.99 Cs: 3.53)
18	TP6901.V2-18	Reservoir Tank
19	SA912.V2-04	O-Ring, (Ex: 7.24 In: 3.68 Cs: 1.78)
20	SA802.23	O-Ring, (Ex: 9.63 In: 6.07 Cs: 1.78)
21	TP6903.V2-21	Shaft
22	SA912.V2-04	O-Ring, (Ex: 7.24 In: 3.68 Cs: 1.78)
23	TP6903.V2-23	Spring Dia 11.2mm
24	VS3900.03	O-Ring, (Ex: 17.56 In: 14 Cs: 1.78)
25	TP6903.V2-25	Safety Valve Housing
26	TP6901.V2-20	Screw 3.8x10mm
27	TP6901.V2-19	Pin
28	TP6901.V2-22	Tube Storage Unit
29	TP6903.V2-29	Arm
30	SA77S.V4-19	O-Ring, (Ex: 8.03 In: 4.47 Cs: 1.78)
31	TP6903.V2-31	Safety Cup
32	TP6901.V2-21	Float
33	TP6901.V2-23	Base
34	TP6901.V2-24	Rd Head S/T Screw M6 X 15

Item	Part No.	Description
35	TP6901.V2-25	Footboard
36	TP6901.V2-26	Fixed Strip
37	TP6901.V2-27	Rd Head S/T Screw M3.6 X 10
38	SS816.S	Hex Head Set Screw M8 X 16 Zinc
39	PX90-23	Aluminium Tube Base
40	SN8.S	Steel Nut M8 Zinc
41	TP6901.V2-35	Piston
42	TP6901.V2-34	Piston Spacer
43	TP6901.V2-33	Flat Washer M8x40 Black
44	SN5.SB	Steel Nut M5 Black
45	PX90-17	Aluminium Tube
46	TP6901.V2-37	Holder
47	TP6901.V2-40	Screw M5x16mm
48	SN5.SB	Steel Nut M5 Black
49*	TP6901.V2-02	Release Button
49-2	PX90-49-2	Check Valve
49-5	TP6901.V2-11	Spring
50	PX90-40	Air Tube
53	TP6901.V2-30	Shaft
54	PX90-25	O-Ring
55	PX90-21	Aluminium Tube Cover
56	TP6901.V2-31	Oil Seal
57	TP6901.V2-32	Holder
58	TP6901.V2-42	Handle
59	TP6901.V2-43	Cap
60	MSP520.SB	Machine Screw Pan Head Phillips M5x20mm Black
61	TP6903.V2-01A	Insert Nut
62	TP6903.V2-09	Air Valve
63	PX90-63	Nipple Ass'y
66	TP6901.V2-45	Main Suction Tube (C/w Adaptor)10mm x 1120mm
67	TP6901.V2-46	Extracting Tube (C/w Adaptor) 6mm x 1120mm
68	TP6903.V2-37	Brake Tube (C/w Rubber Fitting)

NOTE: It is our policy to continually improve products and as such we reserve the right to alter data, specifications and component parts without prior notice. There may be alternative versions of this product, please contact us should you require this information.

IMPORTANT: No liability is accepted for incorrect use of product. Spare parts must be fitted by a competent person

WARRANTY: Guarantee is 12 months from purchase date, proof of which will be required for any claim.

Sealey Group, Kempson Way, Suffolk Business Park, Bury St Edmunds, Suffolk. IP32 7AR



01284 757500



01284 703534



sales@sealey.co.uk



www.sealey.co.uk