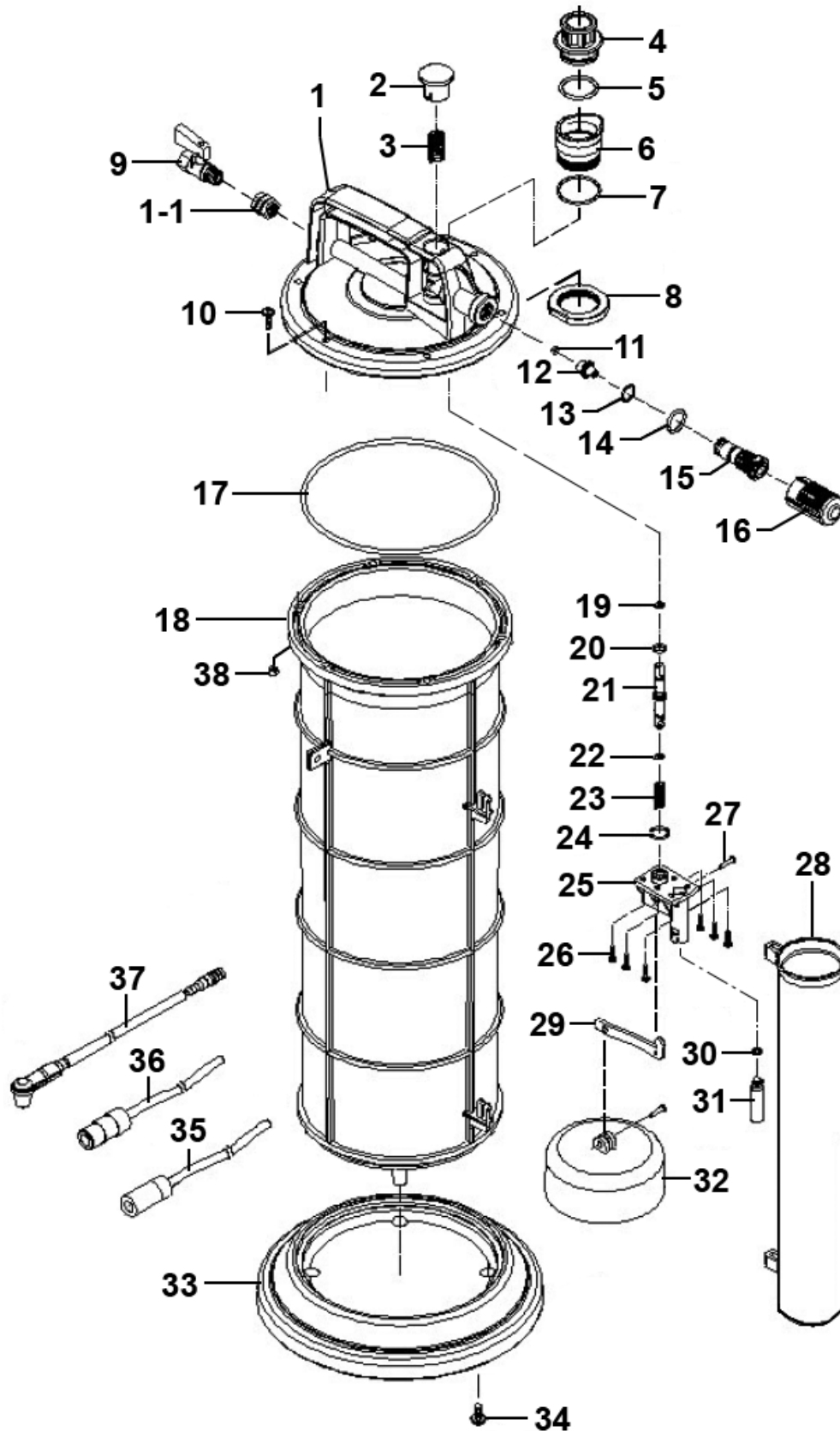




Parts Information:  
Vacuum Oil & Fluid Extractor Air Operated  
9L  
Model No: TP6903.V2



**NOTE:** It is our policy to continually improve products and as such we reserve the right to alter data, specifications and component parts without prior notice. There may be alternative versions of this product, please contact us should you require this information.

**IMPORTANT:** No liability is accepted for incorrect use of product. Spare parts must be fitted by a competent person

**WARRANTY:** Guarantee is 12 months from purchase date, proof of which will be required for any claim.

Sealey Group, Kempson Way, Suffolk Business Park, Bury St Edmunds, Suffolk. IP32 7AR



01284 757500



01284 703534



sales@sealey.co.uk



www.sealey.co.uk



Parts Information:  
**Vacuum Oil & Fluid Extractor Air Operated  
9L  
Model No: TP6903.V2**

| Item | Part No.      | Description                                   |
|------|---------------|---|
| 1    | TP6903.V2-01  | Cover Housing                                 |
| 1-1  | TP6903.V2-01A | Insert Nut                                    |
| 2    | TP6903.V2-02  | Push Button                                   |
| 3    | TP6903.V2-03  | Spring Dia 12.9mm                             |
| 4    | TP6903.V2-04  | Fluid Inlet Coupler                           |
| 5    | TP6901.V2-05  | O-Ring, (Ex: 29.26 In: 26.64 Cs: 2.62)        |
| 6    | TP6901.V2-06  | Fluid Outlet Housing                          |
| 7    | TP6901.V2-07  | O-Ring, (Ex: 28.71 In: 25.15 Cs: 1.54)        |
| 8    | TP6901.V2-08  | Lock Nut                                      |
| 9    | TP6903.V2-09  | Air Valve                                     |
| 10   | MSP520.SB     | Machine Screw Pan Head Phillips M5x20mm Black |
| 11   | TP6903.V2-11  | O-Ring, (Ex: 8.51 In: 5.45 Cs: 1.53)          |
| 12   | TP6903.V2-12  | Vacuum Valve                                  |
| 13   | TP6903.V2-13  | O-Ring, (Ex: 15.20 In: 11.14 Cs: 2.03)        |
| 14   | VS3900.03     | O-Ring, (Ex: 17.56 In: 14 Cs: 1.78)           |
| 15   | TP6903.V2-15  | Vacuum Body                                   |
| 16   | TP6903.V2-16  | Muffler Shell Assembly                        |
| 17   | TP6901.V2-17  | O-Ring, (Ex: 159.05 In: 151.99 Cs: 3.53)      |
| 18   | TP6903.V2-18  | Reservoir Tank                                |
| 19   | SA912.V2-04   | O-Ring, (Ex: 7.24 In: 3.68 Cs: 1.78)          |

| Item | Part No.     | Description                                |
|------|--------------|--|
| 20   | SA802.23     | O-Ring, (Ex: 9.63 In: 6.07 Cs: 1.78)       |
| 21   | TP6903.V2-21 | Shaft                                      |
| 22   | SA912.V2-04  | O-Ring, (Ex: 7.24 In: 3.68 Cs: 1.78)       |
| 23   | TP6903.V2-23 | Spring Dia 11.2mm                          |
| 24   | VS3900.03    | O-Ring, (Ex: 17.56 In: 14 Cs: 1.78)        |
| 25   | TP6903.V2-25 | Safety Valve Housing                       |
| 26   | TP6901.V2-20 | Screw 3.8x10mm                             |
| 27   | TP6901.V2-19 | Pin  |
| 28   | TP6901.V2-22 | Tube Storage Unit                          |
| 29   | TP6903.V2-29 | Arm  |
| 30   | SA77S.V4-19  | O-Ring, (Ex: 8.03 In: 4.47 Cs: 1.78)       |
| 31   | TP6903.V2-31 | Safety Cup                                 |
| 32   | TP6901.V2-21 | Float                                      |
| 33   | TP6903.V2-33 | Base                                       |
| 34   | TP6901.V2-24 | Rd Head S/T Screw M6 X 15                  |
| 35   | TP6903.V2-35 | Main Suction Tube (c/w Adaptor)            |
| 36   | TP6901.V2-46 | Extracting Tube (c/w Adaptor) 6mm x 1120mm |
| 37   | TP6903.V2-37 | Brake Tube (c/w Rubber Fitting)            |
| 38   | SN5.S        | Steel Nut M5 Zinc                          |

**NOTE:** It is our policy to continually improve products and as such we reserve the right to alter data, specifications and component parts without prior notice. There may be alternative versions of this product, please contact us should you require this information.

**IMPORTANT:** No liability is accepted for incorrect use of product. Spare parts must be fitted by a competent person

**WARRANTY:** Guarantee is 12 months from purchase date, proof of which will be required for any claim.

**Sealey Group**, Kempson Way, Suffolk Business Park, Bury St Edmunds, Suffolk. IP32 7AR



01284 757500



01284 703534



sales@sealey.co.uk



www.sealey.co.uk