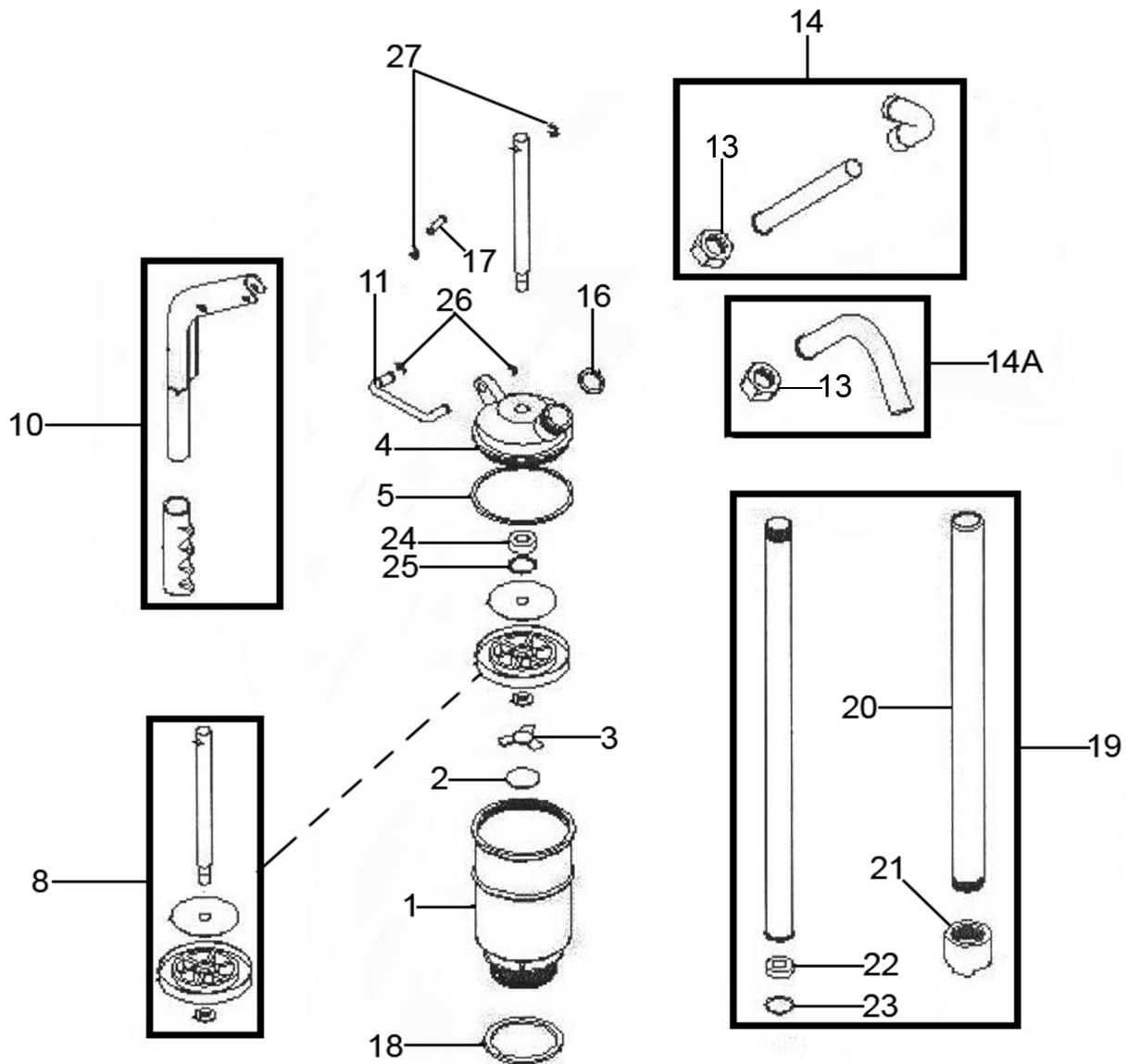




Parts Information:  
**Heavy-Duty Lever Pump High Flow**  
**Model No: TP6801**



Item	Part No.	Description
1	TP6801.01	Body
2	TP6801.02	Check Plate
3	TP6801.03	Set Plate
4	TP6801.04	Cover
5	SA682.V2-41	O-Ring
8	TP6801.08	Piston Assembly (c/w Plate, Piston, Rod & Washer)
10	TP6801.10	Handle (c/w Cover)
11	TP6801.11	Holder, U-Bar
13	TP6801.13	Spout Nut
14	TP6801.14	Discharge Spout (c/w Cap & Nut)
14A	TP6801.14A	Discharge Spout, Angled
16	TP6801.16	Seal, Spout

Item	Part No.	Description
17	TP6801.17	Roll Pin
18	TP6801.18	Gasket
19	TP6801.A	Suction Tube Assembly
20	TP6801.20	Extension Tube
21	TP6801.21	Strainer
22	TP6801.22	Tube Seal
23	SA682.V2-60	O-Ring
24	TP6801.24	Shaft Packing
25	SCT125.17	Circlip
26	TP6801.26	E-Clip 6.5mm
27	TP6801.27	E-Clip 3.4mm
--	TP6801.15	Spout Cap (Not Shown)

**NOTE:** It is our policy to continually improve products and as such we reserve the right to alter data, specifications and component parts without prior notice. There may be alternative versions of this product, please contact us should you require this information.

**IMPORTANT:** No liability is accepted for incorrect use of product. Spare parts must be fitted by a competent person

**WARRANTY:** Guarantee is 12 months from purchase date, proof of which will be required for any claim.

Sealey Group, Kempson Way, Suffolk Business Park, Bury St Edmunds, Suffolk. IP32 7AR



01284 757500



01284 703534



sales@sealey.co.uk



www.sealey.co.uk