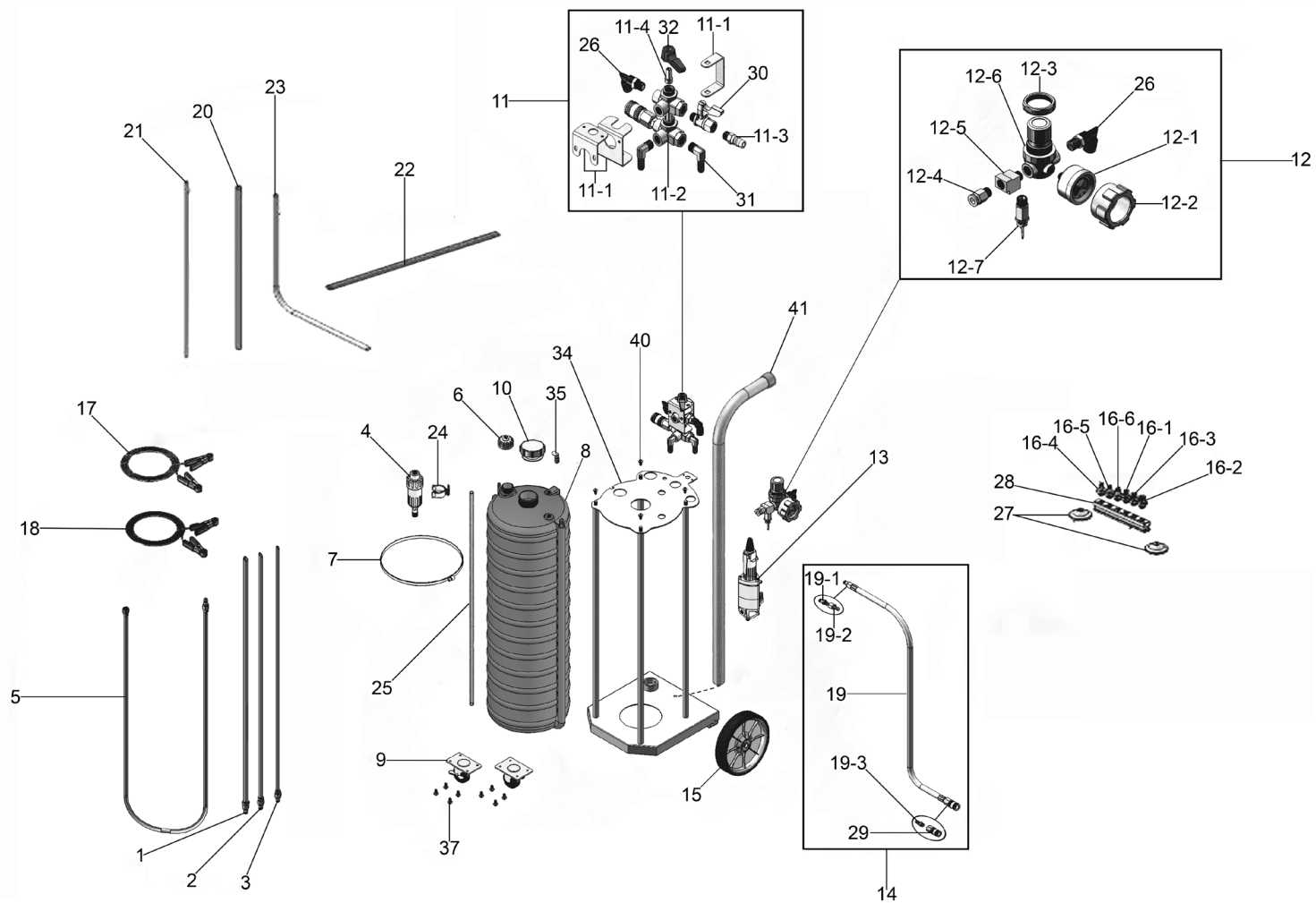




Parts Information:  
**Air Operated Fuel Drainer 40ltr**  
**Model No: TP200.V2**



**NOTE:** It is our policy to continually improve products and as such we reserve the right to alter data, specifications and component parts without prior notice.

There may be alternative versions of this product, please contact us should you require this information.

**IMPORTANT:** No liability is accepted for incorrect use of product. Spare parts must be fitted by a competent person

**WARRANTY:** Guarantee is 12 months from purchase date, proof of which will be required for any claim.

Sealey Group, Kempson Way, Suffolk Business Park, Bury St Edmunds, Suffolk. IP32 7AR



01284 757500



01284 703534



sales@sealey.co.uk



www.sealey.co.uk



Parts Information:  
**Air Operated Fuel Drainer 40ltr**  
**Model No: TP200.V2**

Item	Part No.	Description
1	TP200.01	Hose 1/2" x 1m
2	TP200.02	Hose 3/8" x 1m
3	TP200.03	Hose 5/16" x 1m
4	TP200.04	Oil Filter
5	TP200.05	Extension Hose
6	TP200.06	Relief Valve Cap
7	TP200.07	Tank Strap
8	TP200.08	Container
9	TP200.09	Wheel, Swivel Castor (c/w Brake)
10	TP200.10	Tank Lid
11	TP200.11	Air Intake Assembly
11-1	TP200.11-1	Bracket Kit, Air Intake
11-2	TP200.11-2	Body, Air Intake
11-3	TP200.11-3	Hose Connector
11-4	TP200.11-4	Shaft, Knob
12	TP200.12	Air Regulator Assembly
12-1	TP200.12-1	Gauge
12-2	TP200.12-2	Cover, Gauge
12-3	TP200.12-3	Regulator Ring
12-4	TP200.12-4	Hose Connector, Air Regulator
12-5	TP200.12-5	Connecting Block
12-6	TP200.12-6	Body, Regulator
12-7	TP200.12-7	Valve, Air Regulator
13	TP200.13	Pump
14	TP200.14	Hose Assembly (c/w Connectors)
15	TP200.15	Wheel, Fixed (c/w Bearing)
16-1	TP200.16-1	Adaptor H19 x M10 x 41.5L
16-2	TP200.16-2	Adaptor H19 x M14 x 41.5L
16-3	TP200.16-3	Adaptor H19 x M12 x 41.5L
16-4	TP200.16-4	Adaptor H19 x 6.5mm x 40.5L
16-5	TP200.16-5	Adaptor H19 x 8.5mm x 40.2L
16-6	TP200.16-6	Adaptor H19 x 10.5mm x 40.2L

Item	Part No.	Description
17	TP200.17	Earth Cable, Green
18	TP200.18	Earth Cable, Yellow
19	TP200.19	Hose
19-1	TP200.19-1	Main Hose Adaptor (F)
19-2	TP200.19-2	Hose Connector A
19-3	TP200.19-3	Hose Connector B
20	TP200.20	Hose 10mm x 16mm x 550mm
21	TP200.21	Hose 4mm x 8mm x 1000mm
22	TP200.22	Wire Hose
23	TP200.23	PU Hose 9mm x 13mm x 680mm
24	TP200.24	Seat, Air Filter
25	TP200.25	Level Tube
26	TP200.26	Elbow
27	TP200.27	Pad, Adaptor Seat
28	TP200.28	Adaptor Seat
29	TP200.29	Main Hose Adaptor
30	TP200.30	Overflow Valve
31	TP200.31	Elbow
32	TP200.32	Knob
34	TP200.34	Frame Assembly
35	TP200.35	Plastic Elbow, Tank
37	TP200.37	Screw
40	TP200.40	Bolt, Top Frame
41	TP200.41	End Cap, Handle
--	TP200.13A	Pump Bracket (Not Shown)
--	TP200.33	Knob (Not Shown)
--	TP200.36	Plastic Tube (Not Shown)
--	TP200.38	Hose Clip (Not shown)
--	TP200.39	Clamp, Plastic Tube (Not Shown)
--	TP200.42	Bracket (Not Shown)
--	TP200S.24	Air Filter Seat (Not Shown)
--	TP200.V3-05A	Tank Lid (c/w Nut) (Not Shown)

**NOTE:** It is our policy to continually improve products and as such we reserve the right to alter data, specifications and component parts without prior notice. There may be alternative versions of this product, please contact us should you require this information.

**IMPORTANT:** No liability is accepted for incorrect use of product. Spare parts must be fitted by a competent person

**WARRANTY:** Guarantee is 12 months from purchase date, proof of which will be required for any claim.

**Sealey Group**, Kempson Way, Suffolk Business Park, Bury St Edmunds, Suffolk. IP32 7AR



01284 757500



01284 703534



sales@sealey.co.uk



www.sealey.co.uk