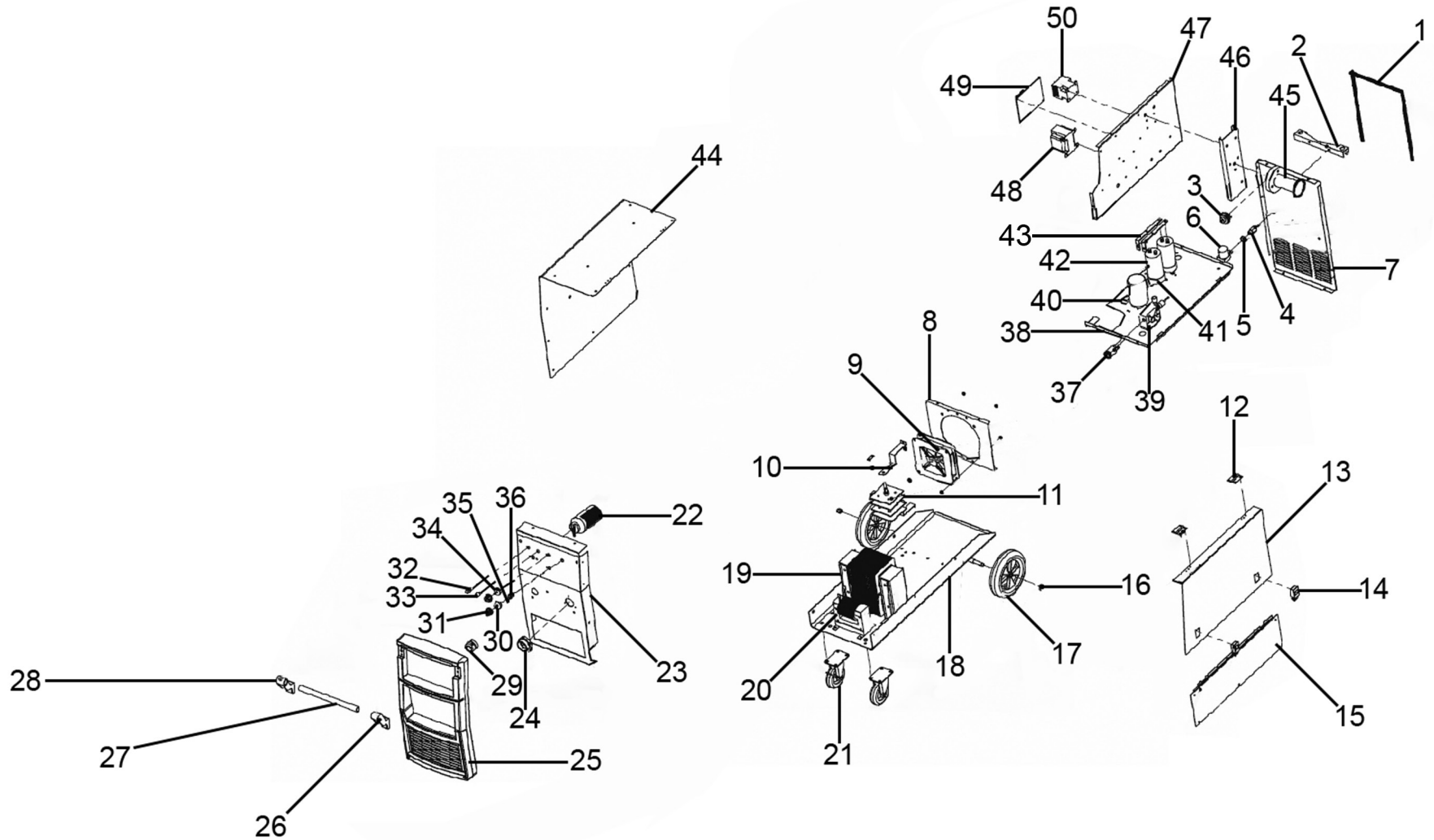




Parts Information:
Professional MIG Welder 250Amp 230V with Binzel® Euro Torch
Model No: SUPERMIG275



NOTE: It is our policy to continually improve products and as such we reserve the right to alter data, specifications and component parts without prior notice.

There may be alternative versions of this product, please contact us should you require this information.

IMPORTANT: No liability is accepted for incorrect use of product. Spare parts must be fitted by a competent person

WARRANTY: Guarantee is 12 months from purchase date, proof of which will be required for any claim.

Sealey Group, Kempson Way, Suffolk Business Park, Bury St Edmunds, Suffolk. IP32 7AR



01284 757500



01284 703534



sales@sealey.co.uk



www.sealey.co.uk



Parts Information:
**Professional MIG Welder 250Amp 230V
 with Binzel® Euro Torch
 Model No: SUPERMIG275**

Item	Part No.	Description
1	SMIG275.01	Chain
2	SMIG275.02	Cylinder Support
3	SMIG275.03	Cable Gland
4	SMIG275.04	Gas Connector
5	SMIG275.05	Copper Nut
6	SMIG275.06	Electro-Valve
7	SMIG275.07	Rear Panel
8	SMIG275.08	Panel, Fan Mounting
9	SMIG275.09	Fan
10	SMIG275.10	Metal Support
11	SMIG275.11	Rectifier
12	SMIG275.12	Hinge
13	SMIG275.13	Side Panel, Upper Right
14	SMIG275.14	Door Lock
15	SMIG275.15	Side Panel, Lower Right
16	SN10.SD	Steel Nut M10 Domed
17	SMIG275.17	Wheel, Fixed
18	SMIG275.18	Bottom Panel
19	SMIG275.19	Transformer
20	SMIG275.20	Reactance
21	SMIG275.21	Wheel, Swivel Castor
22	SMIG275.22	Switch, Rotary (c/w Knob)
23	SMIG275.23	Front Panel
24	SMIG275.24	Torch Holder
25	SMIG275.25	Front Frame
26	SMIG275.26	Handle Support, Right
27	SMIG275.27	Handle
28	SMIG275.28	Handle Support, Left
29	SMIG275.29	Quick Socket (Euro)

Item	Part No.	Description
30	PMIG3530.30	Knob, Potentiometer
31	SMIG180.V3-08	Potentiometer (c/w Swtch)
32	SMIG275.32	Indicator Light, Green
33	SMIG275.33	Indicator Light, Yellow
34	SMIG180.V3-06	Potentiometer
35	SMIG275.35	Switch, Power Toggle
36	PMIG3530.24	Grip
37	SMIG275.37	Copper Head, Quick Socket
38	SMIG275.38	Middle Panel A
39	PMIG3530.41	Drive Motor
40	SMIG275.40	Resistor
41	SMIG275.41	Clamp, Capacitor
42	SMIG275.42	Capacitor
43	SMIG275.43	Connect Bar
44	SMIG275.44	Side Panel, Left
45	SMIG275.45	Spool Holder
46	SMIG275.46	Support, Spool Holder
47	SMIG275.47	Middle Panel B
48	SMIG275.48	Control Transformer
49	SMIG275.49	PCB
50	SMIG275.50	AC Contactor
--	MIG/T25	MIG Torch (Not Shown)
--	SMIG275.52	Wire Feed Roller 0.6-0.8mm (Not Shown)
--	SMIG275.53	Wire Feed Roller 0.8-1.0mm (Not Shown)
--	MIG920	Contact Tip 1.6mm TB25/36 (Pack of 5)(Not Shown)
--	MIG923	Contact Tip 1.6mm TB25/36 (Pack of 5)(Not Shown)
--	MIG/GH	Gas Hose (Not Shown)

NOTE: It is our policy to continually improve products and as such we reserve the right to alter data, specifications and component parts without prior notice. There may be alternative versions of this product, please contact us should you require this information.

IMPORTANT: No liability is accepted for incorrect use of product. Spare parts must be fitted by a competent person

WARRANTY: Guarantee is 12 months from purchase date, proof of which will be required for any claim.

Sealey Group, Kempson Way, Suffolk Business Park, Bury St Edmunds, Suffolk. IP32 7AR



01284 757500



01284 703534



sales@sealey.co.uk



www.sealey.co.uk