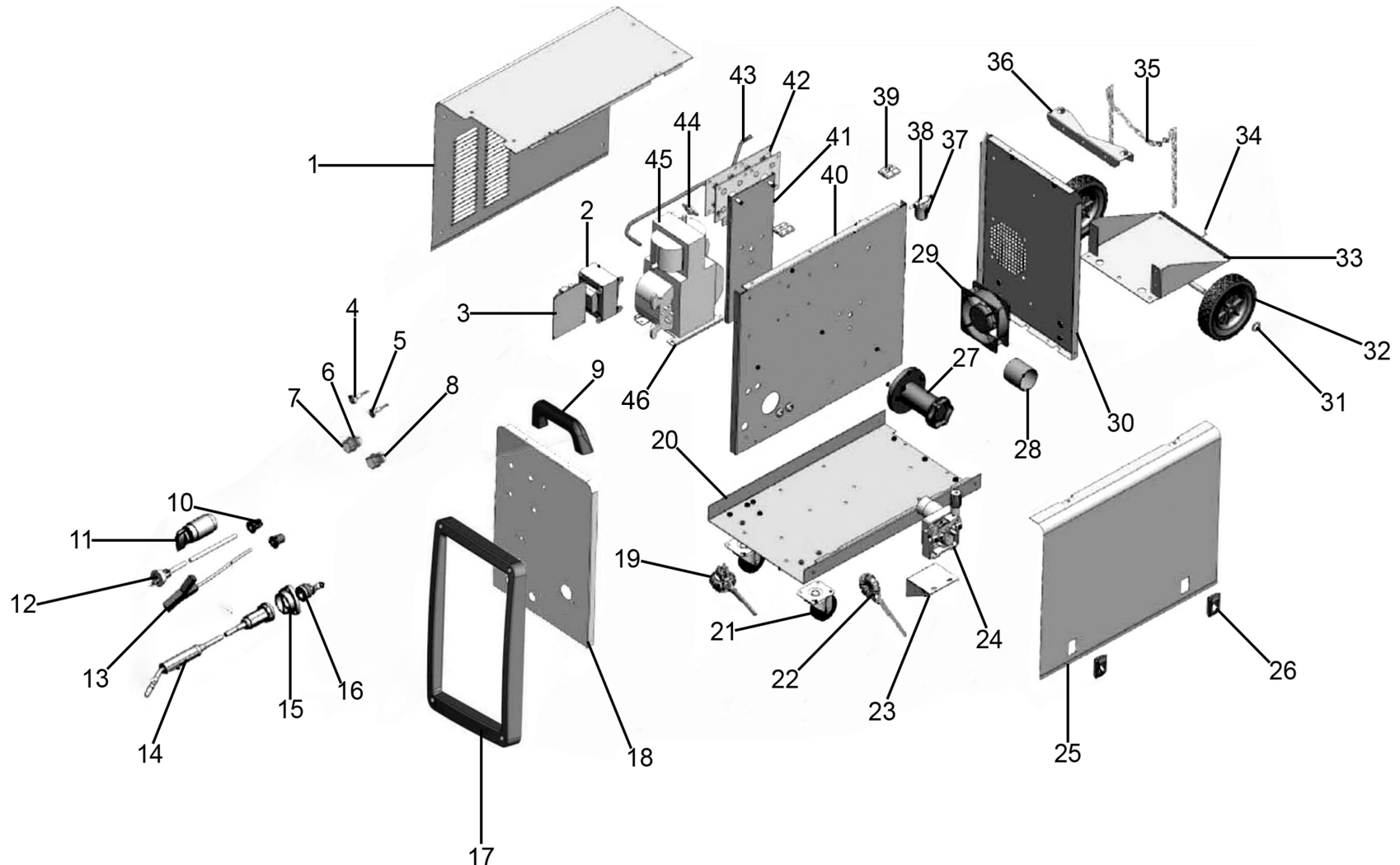




Parts Information:
Professional MIG Welder 230A 230V with Binzel® Euro Torch
Model No: SUPERMIG230



NOTE: It is our policy to continually improve products and as such we reserve the right to alter data, specifications and component parts without prior notice.

There may be alternative versions of this product, please contact us should you require this information.

IMPORTANT: No liability is accepted for incorrect use of product. Spare parts must be fitted by a competent person

WARRANTY: Guarantee is 12 months from purchase date, proof of which will be required for any claim.

Sealey Group, Kempson Way, Suffolk Business Park, Bury St Edmunds, Suffolk. IP32 7AR

01284 757500

01284 703534

sales@sealey.co.uk

www.sealey.co.uk



Parts Information:
**Professional MIG Welder 230A 230V with
Binzel® Euro Torch
Model No: SUPERMIG230**

| Item | Part No. | Description |
|------|---------------|----------------------------|
| 1 | SMIG230.01 | Side Panel, Left |
| 2 | SMIG230.02 | Control Transformer |
| 3 | SMIG230.03 | PCB |
| 4 | SMIG230.04 | Indicator, Green |
| 5 | SMIG230.05 | Indicator, Yellow |
| 6 | SMIG180.V3-06 | Potentiometer |
| 7 | PMIG6035S.W25 | Knob, Potentiometer |
| 8 | SMIG180.V3-08 | Potentiometer (c/w Switch) |
| 9 | SMIG230.09 | Handle |
| 10 | 250XTD.28 | Cable Holder |
| 11 | SMIG230.11 | Switch |
| 12 | SMIG230.12 | Power Lead |
| 13 | SMIG230.13 | Earth Cable |
| 14 | MIG/T15 | MIG Torch |
| 15 | SMIG275.24 | Torch Holder |
| 16 | SMIG230.16 | Euro Connector |
| 17 | SMIG230.17 | Frame, Front |
| 18 | SMIG230.18 | Front Panel |
| 19 | SMIG230.19 | EMC |
| 20 | SMIG230.20 | Bottom Panel |
| 21 | SMIG230.21 | Wheel, Swivel Castor |
| 22 | SMIG230.22 | Wire Feed Assembly |
| 23 | SMIG230.23 | Plate, Wire Feed |
| 24 | SMIG230.24 | Motor, Wire Feed |

| Item | Part No. | Description |
|------|---------------|---|
| 25 | SMIG230.25 | Side Panel, Right |
| 26 | SMIG230.26 | Door Latch |
| 27 | SMIG275.45 | Spool Holder |
| 28 | SMIG180.V3-28 | Spool Spacer |
| 29 | 180XT.19 | Fan |
| 30 | SMIG230.30 | Back Panel |
| 31 | FWM12.S | Flat Washer M12 |
| 32 | SMIG230.32 | Wheel, Fixed |
| 33 | SMIG230.33 | Bracket, Gas Cylinder |
| 34 | 800TTJ.41 | Cotter Pin |
| 35 | SMIG180.V3-35 | Chain |
| 36 | SMIG230.36 | Support, Gas Cylinder |
| 37 | SMIG200.37 | Connector, Gas Valve |
| 38 | SMIG200.38 | Gas Valve |
| 39 | SMIG275.12 | Plastic Hinge |
| 40 | SMIG230.40 | Middle Panel |
| 41 | SMIG230.41 | Panel, Spool Holder |
| 42 | SMIG230.42 | Rectifier |
| 43 | SMIG180.V3-43 | Gas Hose |
| 44 | SMIG180.V3-44 | Thermal Relay |
| 45 | SMIG230.45 | Reactance |
| 46 | SMIG230.46 | Transformer |
| -- | MMIG.CFS | Flange Head Set Screw M8 x 12mm (Not Shown) |
| -- | MIG/GH | Gas Hose (Not Shown) |

NOTE: It is our policy to continually improve products and as such we reserve the right to alter data, specifications and component parts without prior notice. There may be alternative versions of this product, please contact us should you require this information.

IMPORTANT: No liability is accepted for incorrect use of product. Spare parts must be fitted by a competent person

WARRANTY: Guarantee is 12 months from purchase date, proof of which will be required for any claim.

Sealey Group, Kempson Way, Suffolk Business Park, Bury St Edmunds, Suffolk. IP32 7AR



01284 757500



01284 703534



sales@sealey.co.uk



www.sealey.co.uk