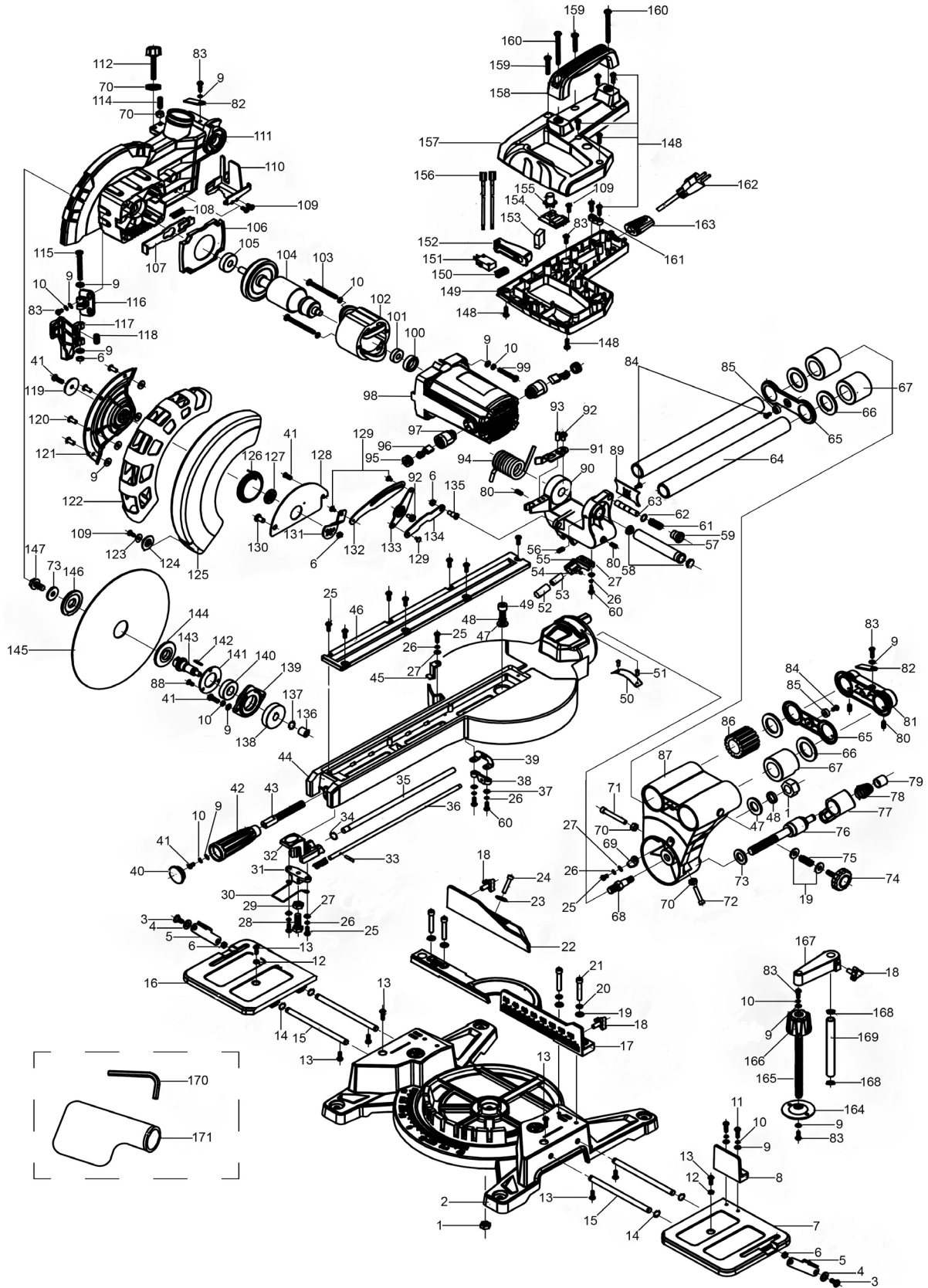


Parts Information:  
**Double Sliding Compound Mitre Saw**  
**Ø216mm**  
**Model No: SMS216.V2**



**NOTE:** It is our policy to continually improve products and as such we reserve the right to alter data, specifications and component parts without prior notice. There may be alternative versions of this product, please contact us should you require this information.

**IMPORTANT:** No liability is accepted for incorrect use of product. Spare parts must be fitted by a competent person

**WARRANTY:** Guarantee is 12 months from purchase date, proof of which will be required for any claim.



Parts Information:  
**Double Sliding Compound Mitre Saw**  
**Ø216mm**  
**Model No: SMS216.V2**

Item	Part No.	Description
1	NLN8.S	Nyloc Nut M8
2	SMS216.V2-02	Base
3	SMS216.V2-03	Screw, Extension Stop
4	SMS216.V2-04	Spring Washer
5	SMS216.V2-05	Extension Plate Stop
6	NLN5.S	Nyloc Nut M5
7	SMS216.V2-07	Extension Table, Right
8	SMS216.V2-08	Fence Extension, Right
9	SMS216.V2-09	Washer
10	SWM5.S	Spring Washer M5
11	SMS216.V2-11	Self-Tapping Screw ST5 x 25mm
12	SN5.S	Steel Nut M5
13	MSP58.S	Machine Screw Pan Head Phillips M5 x 8mm
14	ER1700PD.26	Circlip
15	SMS216.V2-15	Sliding Bar, Extension Table
16	SMS216.V2-16	Extension Table, Left
17	SMS216.V2-17	Fence
18	SMS216.V2-18	Screw (c/w Plastic Knob)
19	SMS216.V2-19	Flat Plate
20	SWM6.S	Spring Washer M6
21	SCB630.S	Socket Cap Bolt M6 x 30mm
22	SMS216.V2-22	Sliding Fence
23	SMS216.V2-23	Flat Washer
24	MSP525.S	Machine Screw Pan Head Phillips M5 x 25mm
25	MSC412.S	Csk Phillips Machine Screw M4 x 12mm
26	SWM4.S	Spring Washer M4
27	SMS216.V2-27	Flat Washer
28	MSP825.S	Machine Screw Pan Head Phillips M8 x 25mm
29	SN8.S	Steel Nut M8
30	SMS216.V2-30	Spring, Mitre Lock Button
31	SMS216.V2-31	Front Base, Mitre Lock Shaft
32	SMS216.V2-32	Mitre Lock Button
33	SMS216.V2-33	Spring Pin
34	SMS216.V2-34	Circlip
35	SMS216.V2-35	Mitre Angle Lock Shaft
36	SMS216.V2-36	Mitre Angle Locating Shaft
37	MSP416.S	Machine Screw Pan Head Phillips M4 x 16mm
38	SMS216.V2-38	Rear Base, Mitre Lock Shaft
39	SMS216.V2-39	Mitre Lock Friction Plate
40	SMS216.V2-40	Mitre Knob Handle Cover
41	TP6901.V2-40	Screw M5 x 16mm
42	SMS216.V2-42	Mitre Lock Handle

Item	Part No.	Description
43	SMS216.V2-43	Insert Shaft, Mitre Lock Handle
44	SMS216.V2-44	Turntable
45	SMS216.V2-45	Mitre Angle Pointer
46	SMS216.V2-46	Turntable Insert
47	SMS216.V2-47	Flat Washer
48	SWM8.S	Spring Washer M8
49	SCB825.S	Socket Cap Bolt M8 x 25mm
50	SMS216.V2-50	Bevel Angle Label
51	SMS216.V2-51	Rivet, Bevel Angle Label
52	SMS216.V2-52	Cover, Laser Module
53	SMS216.V2-53	Laser Module
54	GSM46.S	Grub Screw M4 x 6mm
55	SMS216.V2-55	Base for Laser Module
56	SMS216.V2-56	Grub Screw M5 x 12mm
57	SMS216.V2-57	Spindle, Upper Arm
58	SMS216.V2-58	Spindle Cover, Upper Arm
59	SMS216.V2-59	Upper Arm Lock Cover
60	MSP412.S	Machine Screw Pan Head Phillips M4 x 12mm
61	SMS216.V2-61	Spring, Upper Arm Spring Cover
62	SMS216.V2-62	Rubber Ring
63	SMS216.V2-63	Upper Arm Lock Pin
64	SMS216.V2-64	Sliding Bar
65	SMS216.V2-65	Cover, Sliding Bar
66	SMS216.V2-66	Felt Ring
67	SMS216.V2-67	Linear Bearing
68	SMS216.V2-68	Pivot Connection Shaft
69	SMS216.V2-69	Bevel Angle Pointer
70	SN6.S	Steel Nut M6
71	SCB645.S	Socket Cap Bolt M6 x 45mm
72	SCB640.SB	Socket Cap Bolt M6 x 40mm Black
73	SMS216.V2-73	Flat Washer
74	SMS216.V2-74	Sliding Bar Lock Knob
75	SMS216.V2-75	Spring, Sliding Bar Lock Knob
76	SMS216.V2-76	Pivot Lock Shaft
77	SMS216.V2-77	Pivot Lock Knob
78	SMS216.V2-78	Pivot Lock Spring
79	SMS216.V2-79	Pivot Lock Button
80	GSM58.S	Grub screw M5 x 8mm
81	SMS216.V2-81	Sliding Bar Rear Cover
82	SMS216.V2-82	Cable Holder
83	MSP512.S	Machine Screw Pan Head Phillips M5 x 12mm
84	MSP48.S	Machine Screw Pan Head Phillips M4 x 8 mm

**NOTE:** It is our policy to continually improve products and as such we reserve the right to alter data, specifications and component parts without prior notice. There may be alternative versions of this product, please contact us should you require this information.

**IMPORTANT:** No liability is accepted for incorrect use of product. Spare parts must be fitted by a competent person

**WARRANTY:** Guarantee is 12 months from purchase date, proof of which will be required for any claim.

**Sealey Group**, Kempson Way, Suffolk Business Park, Bury St Edmunds, Suffolk. IP32 7AR



01284 757500



01284 703534



sales@sealey.co.uk



www.sealey.co.uk



Parts Information:  
**Double Sliding Compound Mitre Saw**  
**Ø216mm**  
**Model No: SMS216.V2**

Item	Part No.	Description
85	SMS216.V2-85	Rubber Bumper
86	SMS216.V2-86	Bushing
87	SMS216.V2-87	Pivot
89	SMS216.V2-89	Base Cover, Upper Arm
90	SMS216.V2-90	Base, Upper Arm
91	SMS216.V2-91	Cutting Depth Adjusting Block
92	SMS216.V2-92	Screw, Linkage Plate B
93	SMS216.V2-93	Pin
94	SMS216.V2-94	Torque Spring
95	SMS216.V2-95	Carbon Brush Cover
96	SMS216.V2-96	Carbon Brush
97	SMS216.V2-97	Carbon Brush Holder
98	SMS216.V2-98	Motor Housing
99	MSP535.S	Machine Screw Pan Head Phillips M5 x 35mm
100	SMS216.V2-100	Bearing Bushing
101	B/608ZZ	Bearing
102	SMS216.V2-102	Stator
103	SMS216.V2-103	Self-Tapping Screw ST5 x 60mm
104	SMS216.V2-104	Armature
105	B/6200ZZ	Bearing
106	SMS216.V2-106	Wind Guide
107	SMS216.V2-107	Motor Shaft Lock Plate
108	SMS216.V2-108	Spring, Motor Shaft Lock Plate
109	SMS216.V2-109	Self-Tapping Screw ST4 x 10mm
110	SMS216.V2-110	Rear Blade Protection Plate
111	SMS216.V2-111	Upper Arm
112	SMS216.V2-112	Depth Stop Knob
114	GSM620.S	Grub screw M6 x 20mm
115	MSP540.S	Machine Screw Pan Head Phillips M5 x 40mm
116	SMS216.V2-116	Lock Base, Lower Guard
117	SMS216.V2-117	Lock Button, Lower Guard
118	SMS216.V2-118	Lock Spring, Lower Guard
119	SMS216.V2-119	Disc Washer
120	SMS216.V2-120	Rivet
121	SMS216.V2-121	Metal Plate, Lower Guard
122	SMS216.V2-122	Cover Plate, Lower Guard
123	SMS216.V2-123	Flat Washer
124	SMS216.V2-124	Guide Wheel
125	SMS216.V2-125	Transparent Plate, Lower Guard
126	SMS216.V2-126	Spring, Lower Guard
127	SMS216.V2-127	Metal Linkage Round Plate
128	SMS216.V2-128	Stationery Plate, Lower Guard
129	SMS216.V2-129	Rivet

Item	Part No.	Description
130	SMS216.V2-130	Screw, Lower Guard Plate
131	SMS216.V2-131	Rotatable Plate, Lower Guard
132	SMS216.V2-132	Linkage Plate A
133	SMS216.V2-133	Linkage Plate B
134	SMS216.V2-134	Linkage Plate C
135	SMS216.V2-135	Screw, Linkage Plate C
136	B/HK0810	Needle Bearing
137	SMS216.V2-137	Circlip
138	SMS216.V2-138	Gear
139	SMS216.V2-139	Bearing Base
140	B/6002ZZ	Bearing
141	SMS216.V2-141	Bearing Cover
142	SMS216.V2-142	Woodruff Key
143	SMS216.V2-143	Output Spindle
144	SMS216.V2-144	Inner Flange, Blade
145	SMS216.V2-145	Cut-Off Saw Blade Ø216 x 2.8mm/Ø30mm
146	SMS216.V2-146	Outer Flange, Blade
147	SMS216.V2-147	Screw (L/H) M8 x 16mm
148	SMS216.V2-148	Self-Tapping Screw ST4 x 16mm
149	SMS216.V2-149	Lower Handle
150	SMS216.V2-150	Spring, Main Switch Trigger
151	SMS216.V2-151	Main Switch
152	SMS216.V2-152	Trigger, Main Switch
153	SMS216.V2-153	Capacitor
154	SMS216.V2-154	Laser Switch
155	SMS216.V2-155	Button, Laser Switch
156	SMS216.V2-156	Internal Wire (c/w Clamp)
157	SMS216.V2-157	Upper Handle
158	SMS216.V2-158	Carry Handle
159	MSP530.S	Machine Screw Pan Head Phillips M5 x 30mm
160	SMS216.V2-160	Self-Tapping Screw ST5 x 65mm
161	SMS216.V2-161	Cable Grip
163	SMS216.V2-163	Cable Sleeve
164	SMS216.V2-164	Workclamp Disc
165	SMS216.V2-165	Workclamp Screw Rod
166	SMS216.V2-166	Workclamp Knob
167	SMS216.V2-167	Workclamp Base
168	SMS216.V2-168	Workclamp Shaft Cover
169	SMS216.V2-169	Workclamp Shaft
170	SMS216.V2-170	Hex Key 6mm
171	SMS216.V2-171	Dustbag
--	SMS216B	Multipurpose Cut-Off Saw Blade Ø216 x 2.4mm (optional extra - not shown)

**NOTE:** It is our policy to continually improve products and as such we reserve the right to alter data, specifications and component parts without prior notice. There may be alternative versions of this product, please contact us should you require this information.

**IMPORTANT:** No liability is accepted for incorrect use of product. Spare parts must be fitted by a competent person

**WARRANTY:** Guarantee is 12 months from purchase date, proof of which will be required for any claim.

**Sealey Group**, Kempson Way, Suffolk Business Park, Bury St Edmunds, Suffolk. IP32 7AR



01284 757500



01284 703534



sales@sealey.co.uk



www.sealey.co.uk