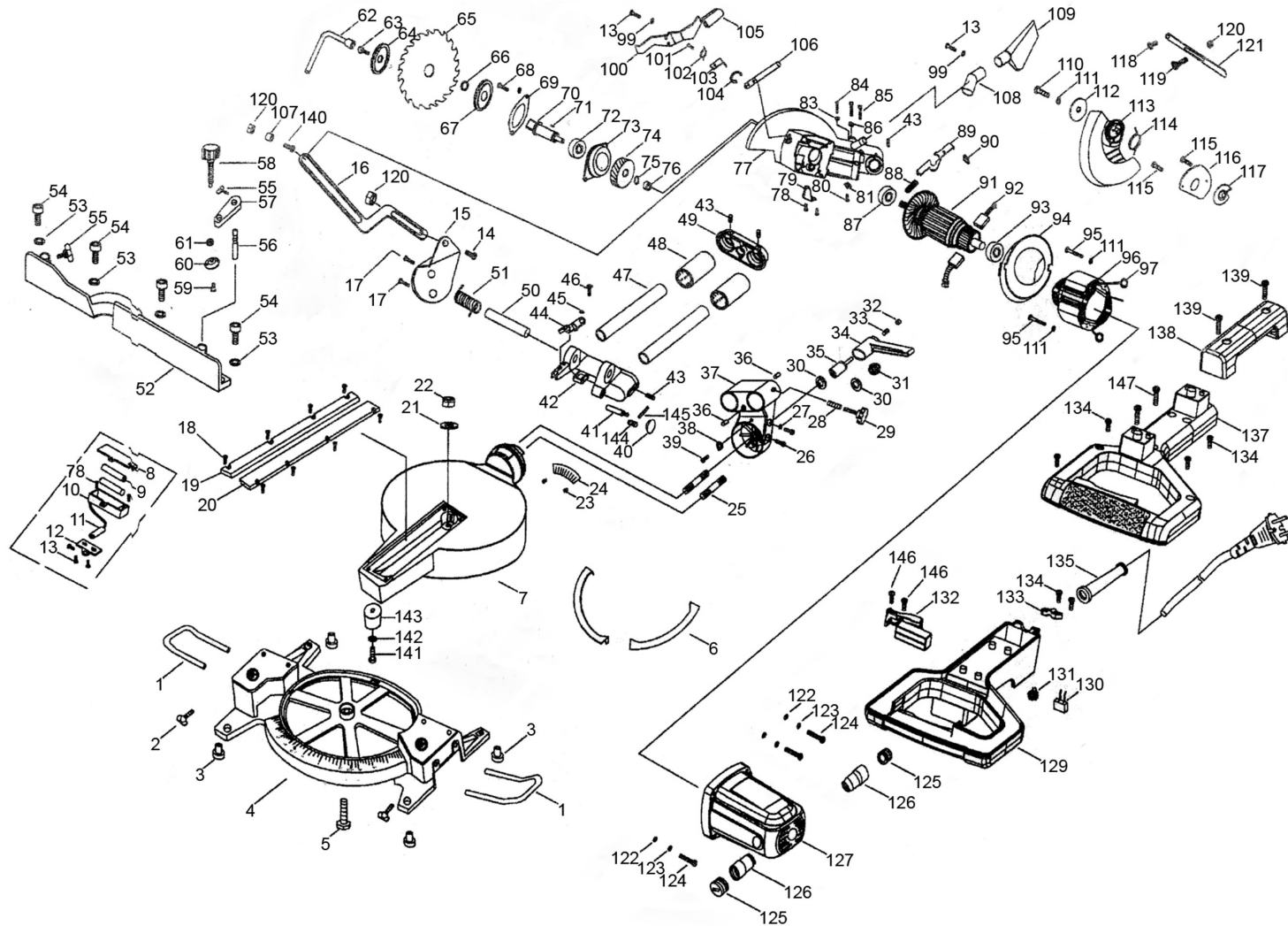




Parts Information:
Compound Sliding Mitre Saw 305mm 230V
Model No: SMS12



NOTE: It is our policy to continually improve products and as such we reserve the right to alter data, specifications and component parts without prior notice.

There may be alternative versions of this product, please contact us should you require this information.

IMPORTANT: No liability is accepted for incorrect use of product. Spare parts must be fitted by a competent person

WARRANTY: Guarantee is 12 months from purchase date, proof of which will be required for any claim.

Sealey Group, Kempson Way, Suffolk Business Park, Bury St Edmunds, Suffolk. IP32 7AR



01284 757500



01284 703534



sales@sealey.co.uk



www.sealey.co.uk



Parts Information:
Compound Sliding Mitre Saw 305mm 230V
Model No: SMS12

Item	Part No.	Description
1	SMS12.01	Extension Rod
2	SMS12.02	Wing Handle
3	SMS8.03	Rubber Foot
4	SMS12.04	Base
5	SMS12.05	Screw M5 x 80mm
6	SMS12.06	Plate, Rotating Table
7	SMS12.07	Rotating Table
8	SMS12.08	Battery Cover
9	SMS12.09	Battery
10	SMS12.10	Battery Box
12	SMS12.12	Holder, Laser
13	MSP410.SB	Machine Screw Pan Head Phillips M4 x 10mm Black
14	SMS12.14	Screw M6 x 14mm
15	SMS12.15	Holder, Connection Support
16	SMS12.16	Connection Rod
17	SMS12.17	Screw M6 x 20mm
18	MSP48.S	Machine Screw Pan Head Phillips M4 x 8mm
19	SMS12.19	Plastic Bar, Small
20	SMS12.20	Plastic Bar, Large
21	SMS8.21	Washer
22	NLN8.SB	Nyloc Nut M8 Black
23	SMS8.23	Rivet
24	SMS8.24	Guide
25	SMS12.25	Stud M10 x 60mm
26	SMS12.26	Screw M8 x 25mm
27	SN8.S	Steel Nut M8
28	SMS12.28	Spring
29	SMS12.29	Lock Handle
30	FWM10.S	Flat Washer M10
31	NLN10.S	Nyloc Nut M10
32	SMS8.32	Cover, Pin Shaft
33	SMS8.33	Lock Spring
34	SMS8.34	Lock Lever Assembly
35	SMS8.35	Nut, Pin Shaft
36	SMS8.36	Limit Stop Post
37	SMS12.37	Support Holder
38	SMS12.38	Cut Pointer

Item	Part No.	Description
39	MSP58.SB	Machine Screw Pan Head Phillips M5 x 8mm Black
40	SMS8.40	Handle, Self Locking
41	SMS12.41	Lock Pin
42	SMS12.42	Support Holder Connector
43	GSM58.S	Grub Screw M5 x 8mm
44	SMS12.44	Depth Adjustment
45	SMS8.45	Washer
46	SMS8.46	Screw
47	SMS12.47	Guide Rail
48	SMS12.48	Bearing
49	SMS12.49	Rear Cover
50	SMS12.50	Pin
51	SMS12.51	Spring
52	SMS12.52	Crossbar
53	FWM8.SB	Flat Washer M8 Black
54	SCB830.SB	Socket Cap Bolt M8 x 30mm Black
55	SMS8.55	Wing Handle
56	SMS8.56	Shaft
57	SMS8.57	Lock Handle
58	SMS8.58	Handle, Work Clamp
59	SMS8.59	Screw
60	SMS8.60	Clamping Plate
61	SMS8.61	Washer M6 Black
62	SMS8.62	Socket Wrench
63	SMS12.63	Left Hand Thread Socket Cap Bolt M8 x 20mm
64	SMS12.64	Outer Flange
65	SMS12B60	Compound Mitre Saw Blade 60TPU
66	SMS12.66-30MM	Blade Ring
67	SMS12.67	Inner Flange
68	SMS8.68	Screw M5 x 16mm
69	SMS12.69	Bearing Fixing Plate
70	SMS8.70	Shaft
71	SMS12.71	Pin
72	B/6203ZZ	Bearing
73	SMS12.73	Bearing Housing
74	SMS12.74	Gear, Large
75	SMS8.75	Circlip

NOTE: It is our policy to continually improve products and as such we reserve the right to alter data, specifications and component parts without prior notice. There may be alternative versions of this product, please contact us should you require this information.

IMPORTANT: No liability is accepted for incorrect use of product. Spare parts must be fitted by a competent person

WARRANTY: Guarantee is 12 months from purchase date, proof of which will be required for any claim.

Sealey Group, Kempson Way, Suffolk Business Park, Bury St Edmunds, Suffolk. IP32 7AR



01284 757500



01284 703534



sales@sealey.co.uk



www.sealey.co.uk



Parts Information:
Compound Sliding Mitre Saw 305mm 230V
Model No: SMS12

Item	Part No.	Description
76	B/HK1210	Needle Bearing
77	SMS12.77	Safety Guard / Safety guard (so)
78	SMS12.78	Screw M4 x 8mm
79	SMS12.79	Stop Block, Safety Guard
80	SMS8.80	Screw M5 x 8mm
81	SMS8.81	Rubber Stopper
83	SMS8.83	Nut, Depth Adjustment
84	SS635.SB	Hex Head Set Screw M6 x 35mm Black
85	SMS8.85	Skt. Hd Bolt M6 x 25mm
86	SN6.S	Steel Nut M6
87	B/6202ZZ	Bearing
88	SMS12.88	Lock Spring
89	SMS8.89	Self Lock Cross Rod
90	SMS8.90	Sleeve, Cross Rod
91	SMS12.91-N	Rotor
92	SMS8.92	Carbon Brush
93	B/6000ZZ	Bearing
94	SMS8.94	Fan Cover
95	SMS8.95	Screw ST4.8 x 70mm
96	SMS12.96-N	Stator
97	SMS8.97	Spring
99	SWM4.SB	Spring Washer M4 Black
100	SMS12.100	Trigger
101	SMS8.101	Screw M3 x 8mm
102	SMS12.102	Spring
103	SMS8.103	Spring Support
104	SMS8.104	Circlip
105	SMS8.105	Sleeve, Trigger
106	SMS10.106	Connection Rod
107	SMS12.107	Sleeve, Connection Rod
108	SMS10.108	Dust Outlet
109	SMS10.109	Dust Bag
110	MSP512.SB	Machine Screw Pan Head Phillips M5 x 12mm Black
111	SWM5.SB	Spring Washer M5 Black
112	SMS12.112	Repair Washer M6 x 30mm Black
113	SMS12.113	Transparent Guard Assembly
114	SMS12.114	Spring, Conical

Item	Part No.	Description
115	MSP610.SB	Machine Screw Pan Head Phillips M6 x 10mm Black
116	SMS12.116	Spring Plate
117	SMS12.117	Plate, Safety Guard
118	SMS12.118	Screw, Connection Rod 1
119	SMS12.119	Screw, Connection Rod 2
120	NLN6.S	Nyloc Nut M6
121	SMS12.121	Connection Rod
122	SMS8.122	Washer
123	SMS8.123	Spring Washer
124	MSP634.SB	Machine Screw Pan Head Phillips M6 x 34mm Black
125	SMS8.125	Cover, Brush Holder
126	SMS12.126	Brush Holder
127	SMS8.127	Housing
129	SMS8.H01	Handle
130	SMS8.H02	Capacitor
131	SMS8.H03	Inductance
132	SMS8.H04	Switch
133	SMS8.H05	Cable Clamp
134	SMS8.H06	Screw ST3.9 x 16mm
135	SMS8.H07	Cable Sleeve
137	SMS8.H09	Middle Housing, Handle
138	SMS8.H10	Upper Housing, Handle
139	SMS8.H11	Screw ST6.3 x 20mm
140	SMS12.140	Screw M6 x 28mm
141	SMS12.141	Screw
142	FWM5.SB	Flat Washer M5 Black
143	SMS12.143	Rubber Foot
144	SMS12.144	Lock Spring
145	SPB57W.27	Spring Pin
146	SMS8.H13	Screw ST3.9 x 12mm
147	SMS8.H12	Screw M4 x 45
--	SH17500160	Washer M8 x 24mm (Not Shown)
--	SMS12B40	Compound Mitre Saw Blade 40TPU (Not Shown)
--	SMS12.91-N	Rotor (Not Shown)
--	SMS12.96-N	Stator (Not Shown)
--	SMS12.LH	Lock Handle (Not Shown)
--	SMS8.RH	Rotating Handle (Not Shown)

NOTE: It is our policy to continually improve products and as such we reserve the right to alter data, specifications and component parts without prior notice. There may be alternative versions of this product, please contact us should you require this information.

IMPORTANT: No liability is accepted for incorrect use of product. Spare parts must be fitted by a competent person

WARRANTY: Guarantee is 12 months from purchase date, proof of which will be required for any claim.

Sealey Group, Kempson Way, Suffolk Business Park, Bury St Edmunds, Suffolk. IP32 7AR



01284 757500



01284 703534



sales@sealey.co.uk



www.sealey.co.uk