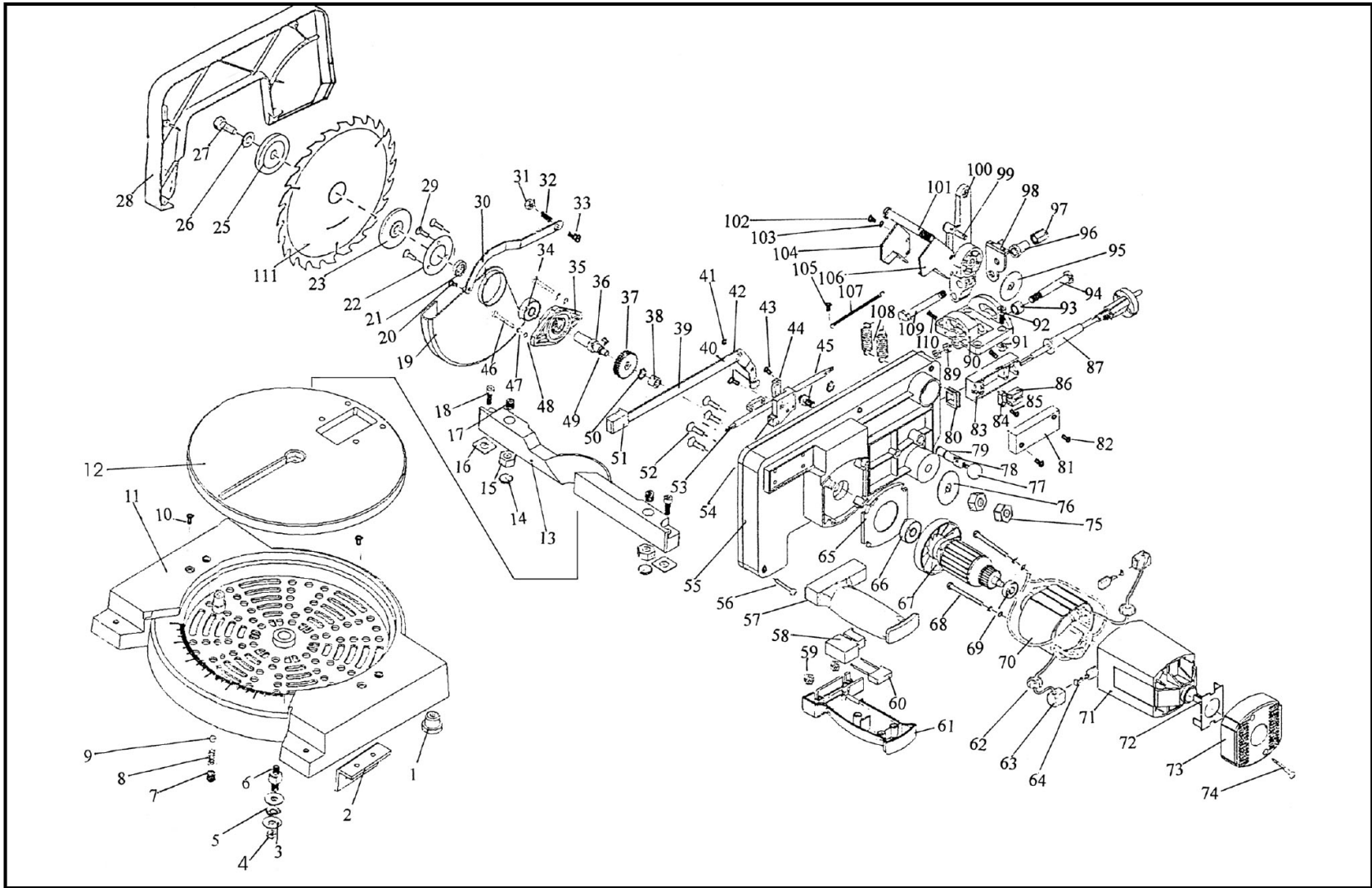




Parts Information:  
Compound Mitre Saw 205mm 230V  
Model No: SM8.V2



**NOTE:** It is our policy to continually improve products and as such we reserve the right to alter data, specifications and component parts without prior notice.

**IMPORTANT:** No liability is accepted for incorrect use of product.

**WARRANTY:** Guarantee is 12 months from purchase date, proof of which will be required for any claim.

Sealey Group, Kempson Way, Suffolk Business Park, Bury St Edmunds, Suffolk. IP32 7AR



01284 757500



01284 703534



sales@sealey.co.uk



www.sealey.co.uk



Parts Information:  
**Compound Mitre Saw 205mm 230V**  
**Model No: SM8.V2**

Item	Part No.	Description
1	SM8.V2-01	Foot Pad
2	SM8.V2-02	Bracket
3	SM8.V2-03	Large Washer
4	SM8.V2-04	Hexagon Nut
5	SM8.V2-05	Washer
6	SM8.V2-06	Shaft
7	SM8.V2-07	Hexagon Screw
8	SM8.V2-08	Spring
9	SM8.V2-09	Steel Ball
10	SM8.V2-10	Pan Head Screw
11	SM8.V2-11	Base
12	SM8.V2-12	Turn Table
13	SM8.V2-13	Guide
14	SM8.V2-14	Screw Pad
15	SM8.V2-15	Hexagon Nut
16	SM8.V2-16	Guide Washer
17	SM8.V2-17	Inner Guide Screw (A)
18	SM8.V2-18	Inner Guide Screw (B)
19	SM8.V2-19	Blade Guard
20	SM8.V2-20	Rivet
21	SM8.V2-21	Washer
22	SM8.V2-22	Fence Baffle
23	SM8.V2-23	Lower Guard
25	SM8.V2-25	Upper Guard
26	SM8.V2-26	Washer
27	SM8.V2-27	Flange skt. hd Bolt m8x18 (Left Hand Thread)
28	SM8.V2-28	Plastic Side Casing
29	SM8.V2-29	Screw
30	SM8.V2-30	Blade Guard Link
31	SN5.SB	Steel Nut m5 Black (Single)
32	SM8.V2-32	Link Spring
33	SM8.V2-33	Screw
34	B/6200ZZ	Bearing 6200ZZ
35	SM8.V2-35	Bearing Casing
36	SM8.V2-36	Main Drive Shaft
37	SM8.V2-37	Driven Gear
38	SM8.V2-38	Bearing
39, 40, 41	SM8.V2-40	Link (B)Ass'y
42	SM8.V2-42	Pan Head Screw
43	SM8.V2-43	Pan Head Screw
44	SM8.V2-44	Cable Clamp
45	SM8.V2-45	Bolt m8x14

Item	Part No.	Description
46	SM8.V2-46	Pan Head Screw
47	SM8.V2-47	Resilience Flake
48	SM8.V2-48	Flat Washer
49	SM8.V2-49	Woodruff Key
50	SM8.V2-50	Retaining Ring
51	SM8.V2-51	Lock,Off Button
52	SM8.V2-52	Screw
53	SM8.V2-53	Wire
--	SM8.V2-53C	Guide Screw (NOT SHOWN)
54	SM8.V2-54	Wire Clamp Base
55	SM8.V2-55	Frame
56	SM8.V2-56	Pan Head Screw
57	SM8.V2-57	Upper Handle
58	SM8.V2-58	Switch
59	SM8.V2-59	Hexagon Nut
60	SM8.V2-60	Capacitor 33uf tns-24
61	SM8.V2-61	Lower Handle
62	SM8.V2-62	Inductance
63	SM8.V2-63	Brush & Copper Cover
64	SM8.V2-64	Carbon Brush(Single)
65	SM8.V2-65	Fan Baffle
66	B/6000Z	Bearing 6000Z
67	SM8.V2-67	Armature
68	SM8.V2-68	Pan Head Screw
69	B/608ZZ	Bearing 608ZZ
70	SM8.V2-70	Stator
71	SM8.V2-71	Housing
72	SM8.V2-72	Rear Cover Baffle
73	SM8.V2-73	Housing,Rear Cover
74	SM8.V2-74	Screw
75	NLN8.SB	Nyloc Nut m8 Black (Single)
76	SM8.V2-76	Large Washer
77	SM8.V2-77	Fix Pin Handle
78	SM8.V2-78	Fix Pin
79	SM8.V2-79	O-Ring
80	SM8.V2-80	Cable Guard
81	SM8.V2-81	Upper Wire Box
82	SM8.V2-82	Pan Head Screw
83	SM8.V2-83	Lower Wire Box
84	SM8.V2-84	Cable Clamp
85	SM8.V2-85	Screw
86	SM8.V2-86	Wire Pole
87	SM8.V2-87	Cable Guard
89	NLN10.SB	Nyloc Nut m10 Black(Single)

**NOTE:** It is our policy to continually improve products and as such we reserve the right to alter data, specifications and component parts without prior notice.

**IMPORTANT:** No liability is accepted for incorrect use of product.

**WARRANTY:** Guarantee is 12 months from purchase date, proof of which will be required for any claim.

**Sealey Group**, Kempson Way, Suffolk Business Park, Bury St Edmunds, Suffolk. IP32 7AR



01284 757500



01284 703534



sales@sealey.co.uk



www.sealey.co.uk



Parts Information:  
**Compound Mitre Saw 205mm 230V**  
**Model No: SM8.V2**

Item	Part No.	Description
90	SM8.V2-90	Bracket Base
91	SN6.SB	Steel Nut m6 Black (Single)
92	SM8.V2-92	Inner Hexagon Screw
93	SM8.V2-93	Bracket Set Ring
94	SM8.V2-94	Bolt m10x65
95	SM8.V2-95	Wear Plate
96	SM8.V2-96	Thimble
97	SM8.V2-97	Nut
98	SM8.V2-98	Pointer
99	SM8.V2-99	Pin
100	SM8.V2-100	Bracket
101	SM8.V2-101	Bolt m8x75
102	SM8.V2-102	Pan Head Screw

Item	Part No.	Description
103	SM8.V2-103	Resilience Flake
104	SM8.V2-104	Fence Baffle (Left)
105	SM8.V2-105	Pan Head Screw
106	SM8.V2-106	Fence Baffle (Right)
107	SM8.V2-107	Link Spring
108	SM8.V2-108	Return Spring
109	SM8.V2-109	Screw
110	SM8.V2-110	Screw
111	SM8.B24	Blade, 205x30mm 24tpi
--	SM8.B48	Blade, 205x30mm 48tpi (NOT SHOWN)
--	SM8.V2-W	Adjusting Wrench (NOT SHOWN)
--	SM8.V2-111	Adjusting Allen Keys (NOT SHOWN)

**NOTE:** It is our policy to continually improve products and as such we reserve the right to alter data, specifications and component parts without prior notice.

**IMPORTANT:** No liability is accepted for incorrect use of product.

**WARRANTY:** Guarantee is 12 months from purchase date, proof of which will be required for any claim.

**Sealey Group**, Kempson Way, Suffolk Business Park, Bury St Edmunds, Suffolk. IP32 7AR



01284 757500



01284 703534



sales@sealey.co.uk



www.sealey.co.uk