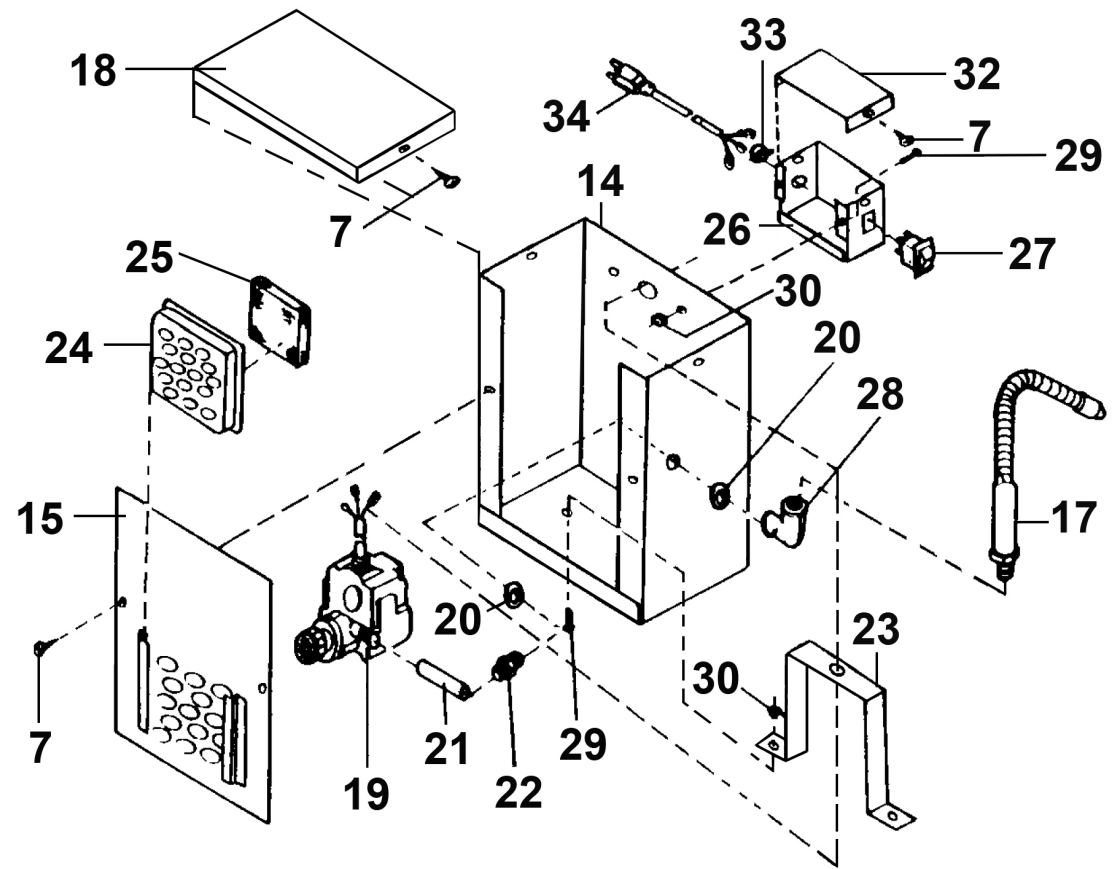
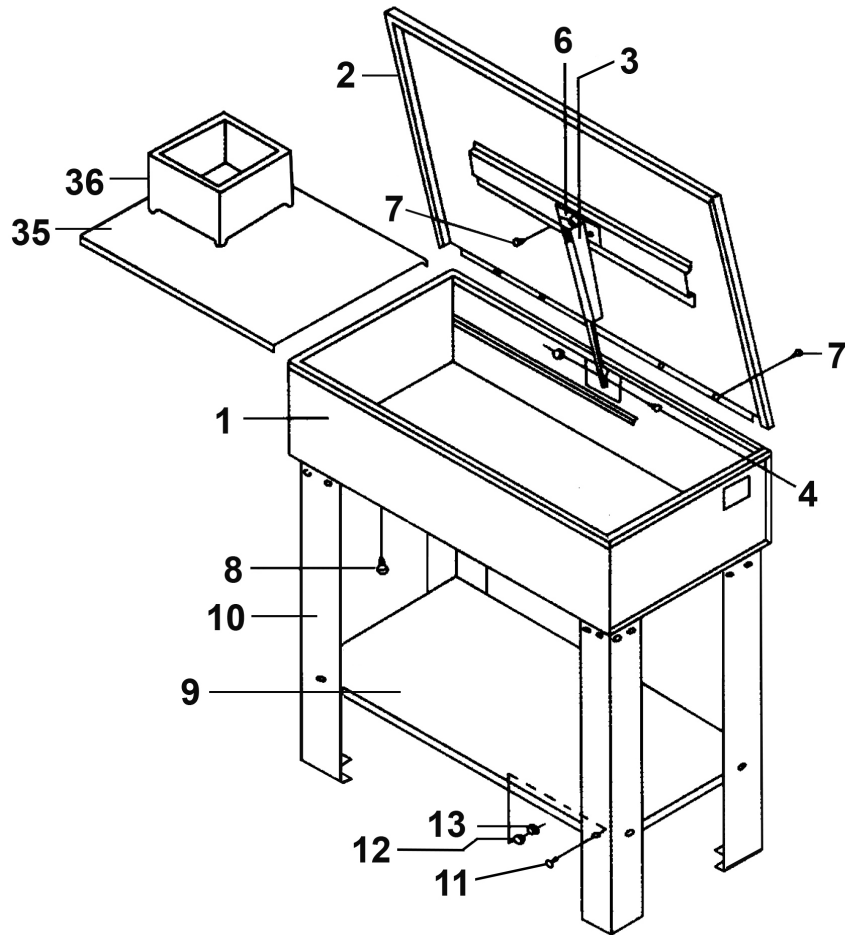




Parts Information:
Parts Cleaning Tank
Model No: SM40



NOTE: It is our policy to continually improve products and as such we reserve the right to alter data, specifications and component parts without prior notice.

There may be alternative versions of this product, please contact us should you require this information.

IMPORTANT: No liability is accepted for incorrect use of product. Spare parts must be fitted by a competent person

WARRANTY: Guarantee is 12 months from purchase date, proof of which will be required for any claim.

Sealey Group, Kempson Way, Suffolk Business Park, Bury St Edmunds, Suffolk. IP32 7AR



01284 757500



01284 703534



sales@sealey.co.uk



www.sealey.co.uk



Parts Information:
Parts Cleaning Tank
Model No: SM40

Item	Part No.	Description
1	SM40/01	Body
2	SM40/02	Cover
3	SM40/03	Safety Lever Assembly
4	SM40/04	Pan Screw
6	SM223/03	Safety Link
7	SM40/07	Tapping Screw
8	SM40/08	Plug, Oil
9	SM40/09	Shelf
10	SM40/10	Leg
11	SM40/11	Pan Screw
12	SM40/12	Tooth Washer
13	SM40/13	Hex Nut
14	SM40/14	Pump Housing
15	SM40/15	Housing Front Cover
17	SM40D.V2-18	Flexible Pipe
18	SM40/18	Housing Top
19	SM30/A19	Pump 230V

Item	Part No.	Description
20	SM40/20	Washer
21	SM40/21	Fluid Hose
22	SM40/22	Nipple Connector
23	SM40/23	Pump Anchor
24	SM40/24	Filter Bracket
25	SM30/A25	Filter
26	SM30/A26	Switch Box
27	SM30/A27	Light Switch
28	SM40/28	Connector
29	SM40/29	Pan Screw
30	SM40/30	Hex Nut
32	SM30/A32	Switch Box Cover
33	SM40/33	Feed Through
34	CS 2.5M3CBLK	Cord Set 2.5m 3 Core Blk
35	SM40.V2-06	Work Shelf
36	SM30/A36	Basket
--	SM40.P	Pump Complete (not shown)

NOTE: It is our policy to continually improve products and as such we reserve the right to alter data, specifications and component parts without prior notice. There may be alternative versions of this product, please contact us should you require this information.

IMPORTANT: No liability is accepted for incorrect use of product. Spare parts must be fitted by a competent person

WARRANTY: Guarantee is 12 months from purchase date, proof of which will be required for any claim.

Sealey Group, Kempson Way, Suffolk Business Park, Bury St Edmunds, Suffolk. IP32 7AR



01284 757500



01284 703534



sales@sealey.co.uk



www.sealey.co.uk