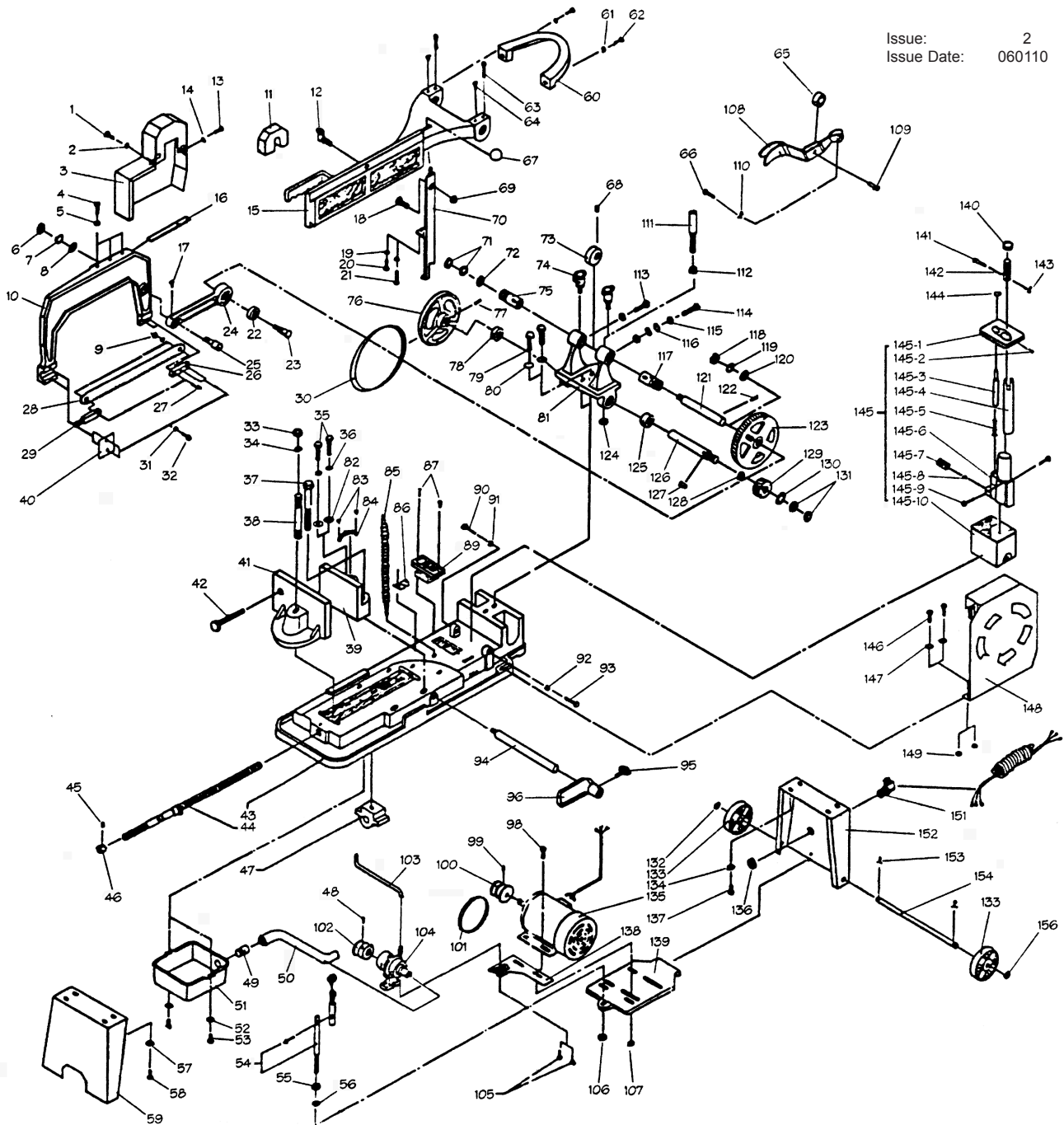


Issue: 2  
 Issue Date: 060110



**NOTE:** It is our policy to continually improve products and as such we reserve the right to alter data, specifications and component parts without prior notice.

**IMPORTANT:** No liability is accepted for incorrect use of product.

**WARRANTY:** Guarantee is 12 months from purchase date, proof of which will be required for any claim.

**INFORMATION:** For a copy of our latest catalogue and promotions call us on 01284 757525 and leave your full name and address, including postcode.



PARTS FOR:  
**POWER HACKSAW 185mm CAPACITY c/w  
 COOLANT SYSTEM**  
 MODEL: **SM17/1**

| ITEM | PART NO       | DESCRIPTION                               | ITEM   | PART NO       | DESCRIPTION                   |
|------|---------------|---|--------|---------------|-------------------------------|
| 1    | SM16-17R/0001 | BOLT                                      | 82     | SM16-17R/0082 | WASHER                        |
| 2    | SM16-17R/0002 | WASHER                                    | 83     | SM16-17R/0083 | RIVET                         |
| 3    | SM16-17R/0003 | GUARD                                     | 84     | SM16-17R/0084 | DIAPHRAGM                     |
| 4    | SM16-17R/0004 | BOLT 1/4"x1-1/4"                          | 85     | SM16-17R/0085 | WATER NOZZLE                  |
| 5    | SM16-17R/0005 | NUT 1/4"                                  | 86     | SM16-17R/0086 | NEEDLE                        |
| 6    | SM16-17R/0006 | NUT                                       | 87     | SM16-17R/0087 | BOLT 3/16"x3/4"               |
| 7    | SM16-17R/0007 | WASHER                                    | 89     | SM16-17R/0089 | SWITCH                        |
| 8    | SM16-17R/0008 | WASHER                                    | 90     | SM16-17R/0090 | BOLT 5/16"x1-1/2"             |
| 9    | SM16-17R/0009 | NUT 1/4"                                  | 91     | SM16-17R/0091 | NUT 5/16"                     |
| 10   | SM16-17R/0010 | BOW SAW                                   | 92     | SM16-17R/0092 | NUT 5/16"                     |
| 11   | SM16-17R/0011 | WEIGHT                                    | 93     | SM16-17R/0093 | BOLT 5/16"x1-1/2"             |
| 12   | SM16-17R/0012 | L-TYPE OIL CUP                            | 94     | SM16-17R/0094 | LENGTH BAR                    |
| 13   | SM16-17R/0013 | BOLT                                      | 95     | SM16-17R/0095 | "T" HEAD BOLT                 |
| 14   | SM16-17R/0014 | WASHER                                    | 96     | SM16-17R/0096 | LENGTH FIXING PLATE           |
| 15   | SM16-17R/0015 | SAW ARM                                   | 98     | SM16-17R/0098 | BOLT 5/16"x3/4"               |
| 16   | SM16-17R/0016 | SLIDE                                     | 99     | SM16-17R/0099 | HEADLESS SET SCREW 5/16"x3/8" |
| 17   | SM16-17R/0017 | PEANUT OIL CAP                            | 100    | SM16-17R/0100 | PULLEY                        |
| 18   | SM16-17R/0018 | BOLT                                      | 101    | SM16-17R/0101 | V-BELT 'M16'                  |
| 19   | SM16-17R/0019 | NUT 1/4"                                  | 102    | SM16-17R/0102 | PUMP PULLEY                   |
| 20   | SM16-17R/0021 | BOLT 1/4"x1-1/4"                          | 103    | SM16-17R/0103 | HOSE                          |
| 22   | SM16-17R/0022 | BEARING '6203ZZ'                          | 104    | SM16-17R/0104 | COOLANT PUMP                  |
| 23   | SM16-17R/0023 | LINK SCREW                                | 105    | SM16-17R/0105 | BOLT 5/16"x3/4"               |
| 24   | SM16-17R/0024 | CONNECTING ROD                            | 106    | SM16-17R/0106 | NUT 1/2"                      |
| 25   | SM16-17R/0025 | LINK SCREW                                | 107    | SM16-17R/0107 | NUT 5/16"                     |
| 26   | SM16-17R/0026 | BLADE FIXED PLATE                         | 108    | SM16-17R/0108 | COMPRESSING ARM               |
| 27   | SM16-17R/0027 | SCREW                                     | 109    | SM16-17R/0109 | CUP                           |
| 28   | SM16/17/B     | POWERSAW BLADE 16x1x.050"14tpi            | 110    | SM16-17R/0110 | COTTER PIN 1/16"              |
|      | SM16/17/B/10  | POWERSAW BLADE 16x1x.050"10tpi (optional) | 111    | SM16-17R/0111 | COMPRESSING BRACKET           |
|      | SM16/17/B/18  | POWERSAW BLADE 16x1x.050"18tpi (optional) | 112    | SM16-17R/0112 | NUT 1/2"                      |
| 29   | SM16-17R/0029 | BLADE ADJUSTING SCREW                     | 113    | SM16-17R/0113 | BOLT                          |
| 30   | SM16-17R/0030 | V-BELT 'A34'                              | 114    | SM16-17R/0114 | BOLT 3/8"x1-1/2"              |
| 31   | SM16-17R/0031 | WASHER                                    | 115    | SM16-17R/0115 | NUT 3/8"                      |
| 32   | SM16-17R/0032 | BOLT                                      | 116    | SM16-17R/0116 | WASHER                        |
| 33   | SM16-17R/0033 | NUT                                       | 117    | SM16-17R/0117 | BUSHING                       |
| 34   | SM16-17R/0034 | WASHER                                    | 118    | SM16-17R/0118 | NUT 1/2"                      |
| 35   | SM16-17R/0035 | BOLT 1/2"x1-1/4"                          | 119    | SM16-17R/0119 | WASHER                        |
| 36   | SM16-17R/0036 | WASHER                                    | 120    | SM16-17R/0120 | PLATE WASHER 1/2"             |
| 37   | SM16-17R/0037 | BOLT 5/8"x3"                              | 121    | SM16-17R/0121 | GEAR SHAFT                    |
| 38   | SM16-17R/0038 | STUD                                      | 122    | SM16-17R/0122 | SPRING PIN                    |
| 39   | SM16-17R/0039 | FIXED VICE                                | 123    | SM16-17R/0123 | GEAR 110T                     |
| 40   | SM16-17R/0040 | PLATE                                     | 124    | SM16-17R/0124 | NUT 1/2"                      |
| 41   | SM16-17R/0041 | FREE VICE                                 | 125    | SM16-17R/0125 | BEARING '6204Z'               |
| 42   | SM16-17R/0042 | BOLT                                      | 126    | SM16-17R/0126 | SHAFT                         |
| 43   | SM16-17R/0043 | BED                                       | 127    | SM16-17R/0127 | KEY 1/4"                      |
| 44   | SM16-17R/0044 | LEADING SCREW                             | 128    | SM16-17R/0128 | SHAFT CASING                  |
| 45   | SM16-17R/0045 | SET SCREW                                 | 129    | SM16-17R/0129 | SMALL GEAR 28T                |
| 46   | SM16-17R/0046 | COLLAR STOP                               | 130    | SM16-17R/0130 | PLATE WASHER 1/2"             |
| 47   | SM16-17R/0047 | SCREW SET                                 | 131    | SM16-17R/0131 | NUT 1/2"                      |
| 48   | SM16-17R/0048 | HEADLESS SET SCREW                        | 132    | SM16-17R/0132 | SPRING WASHER 1/2"            |
| 49   | SM16-17R/0049 | WATER INLET SCREW                         | 133    | SM16-17R/0133 | WHEEL                         |
| 50   | SM16-17R/0050 | HOSE                                      | 134    | SM16-17R/0134 | STAR WASHER 5/16"             |
| 51   | SM16-17R/0051 | TANK                                      | 135    | SM16-17R/0135 | MOTOR                         |
| 52   | SM16-17R/0052 | STAR WASHER                               | 136    | SM16-17R/0136 | NUT                           |
| 53   | SM16-17R/0053 | BOLT 5/16"x1/2"                           | 137    | SM16-17R/0137 | BOLT 5/16"x3/4"               |
| 54   | SM16-17R/0054 | SCREW                                     | 138    | SM16-17R/0138 | MOUNT                         |
| 55   | SM16-17R/0055 | NUT 1/2"                                  | 139    | SM16-17R/0139 | MOUNT                         |
| 56   | SM16-17R/0056 | STAR WASHER 1/2"                          | 140    | SM16-17R/0140 | NUT 1/2"                      |
| 57   | SM16-17R/0057 | STAR WASHER 5/16"                         | 141    | SM16-17R/0141 | PIN                           |
| 58   | SM16-17R/0058 | BOLT 5/16"x3/4"                           | 142    | SM16-17R/0142 | BOLT                          |
| 59   | SM16-17R/0059 | SUPPORT                                   | 143    | SM16-17R/0143 | COTTER PIN 1/16"              |
| 60   | SM16-17R/0060 | TILE                                      | 144    | SM16-17R/0144 | FLAT WASHER                   |
| 61   | SM16-17R/0061 | STAR WASHER 5/16"                         | 145    | SM16-17R/0145 | HYDRAULIC PUMP                |
| 62   | SM16-17R/0062 | BOLT 5/16"x1"                             | 145-1  | SM16-17R/P-1  | COVER,TANK                    |
| 63   | SM16-17R/0063 | BOLT                                      | 145-2  | SM16-17R/P-2  | SCREW                         |
| 64   | SM16-17R/0064 | PEANUT OIL CAP                            | 145-3  | SM16-17R/P-3  | PISTON                        |
| 65   | SM16-17R/0065 | WHEEL ASSY                                | 145-4  | SM16-17R/P-4  | RAM PISTON                    |
| 66   | SM16-17R/0066 | CUP HEAD PIN                              | 145-5  | SM16-17R/P-5  | SPRING                        |
| 67   | SM16-17R/0067 | KNOB                                      | 145-6  | SM16-17R/P-6  | BODY                          |
| 68   | SM16-17R/0068 | SCREW                                     | 145-7  | SM16-17R/P-7  | HEADLESS SOCKET SCREW         |
| 69   | SM16-17R/0069 | NUT 1/2"                                  | 145-8  | SM16-17R/P-8  | BALL                          |
| 70   | SM16-17R/0070 | SWITCH BAR                                | 145-9  | SM16-17R/P-9  | NUT                           |
| 71   | SM16-17R/0071 | NUT                                       | 145-10 | SM16-17R/P-10 | TANK                          |
| 72   | SM16-17R/0072 | PLATE WASHER                              | 146    | SM16-17R/0146 | BOLT 5/16"x1-1/4"             |
| 73   | SM16-17R/0073 | CAM                                       | 147    | SM16-17R/0147 | STAR WASHER 5/16"             |
| 74   | SM16-17R/0074 | OIL CUP                                   | 148    | SM16-17R/0148 | GUARD                         |
| 75   | SM16-17R/0075 | BUSHING                                   | 149    | SM16-17R/0149 | NUT 5/16"                     |
| 76   | SM16-17R/0076 | PULLEY                                    | 151    | SM16-17R/0151 | CABLE FIXTURE                 |
| 77   | SM16-17R/0077 | SPRING PIN                                | 152    | SM16-17R/0152 | SUPPORT                       |
| 78   | SM16-17R/0078 | BEARING '6204Z'                           | 153    | SM16-17R/0153 | COTTER PIN 3/32"              |
| 79   | SM16-17R/0079 | BOLT 1/2"x1-1/4"                          | 154    | SM16-17R/0154 | SHAFT                         |
| 80   | SM16-17R/0080 | STAR WASHER 1/2                           | 156    | SM16-17R/0156 | WASHER                        |
| 81   | SM16-17R/0081 | FRAME SUPPORT                             |        |               |                               |

**NOTE:** It is our policy to continually improve products and as such we reserve the right to alter data, specifications and component parts without prior notice.

**IMPORTANT:** No liability is accepted for incorrect use of product.

**WARRANTY:** Guarantee is 12 months from purchase date, proof of which will be required for any claim.

**INFORMATION:** For a copy of our latest catalogue and promotions call us on 01284 757525 and leave your full name and address, including postcode.



Sole UK Distributor,  
 Sealey Group, Kempson Way,  
 Suffolk Business Park,  
 Bury St Edmunds, Suffolk, IP32 7AR



01284 757500



01284 703534



[www.sealey.co.uk](http://www.sealey.co.uk)



[sales@sealey.co.uk](mailto:sales@sealey.co.uk)