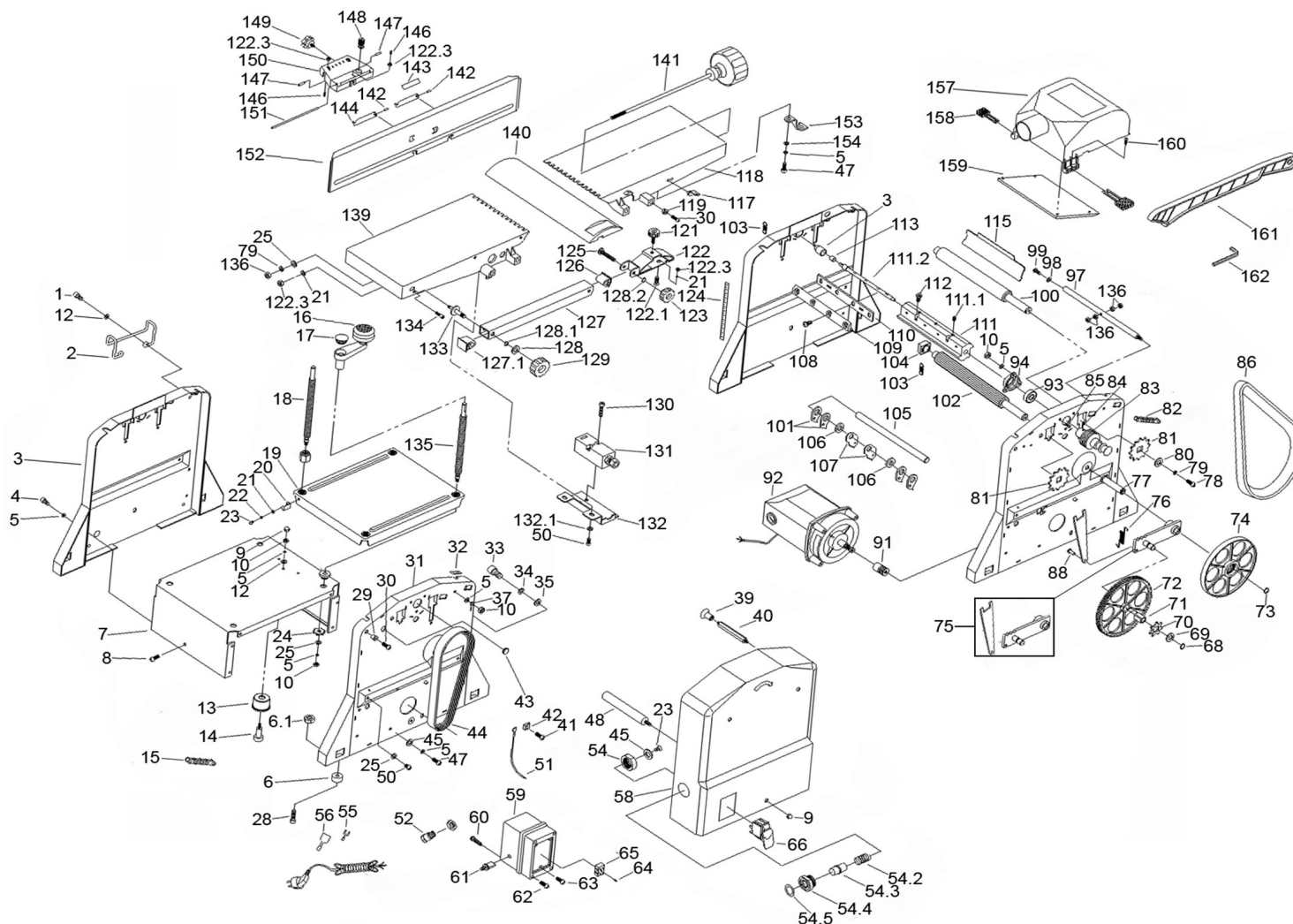


## Parts Information: Planer/Thicknesser 200 x 120mm Model No: SM1311



**NOTE:** It is our policy to continually improve products and as such we reserve the right to alter data, specifications and component parts without prior notice.

There may be alternative versions of this product, please contact us should you require this information.

**IMPORTANT:** No liability is accepted for incorrect use of product. Spare parts must be fitted by a competent person

**WARRANTY:** Guarantee is 12 months from purchase date, proof of which will be required for any claim.

**Sealey Group**, Kempson Way, Suffolk Business Park, Bury St Edmunds, Suffolk. IP32 7AR



01284 757500



01284 703534



sales@sealey.co.uk



www.sealey.co.uk



## Parts Information: Planer/Thicknesser 200 x 120mm Model No: SM1311

Item	Part No.	Description
1	SM1311.01	Skt. Hd Bolt M5 x 10mm
2	SM1311.02	Cord Wrap
3	SM1311.03	Side Plate, Top
4	SM1311.04	Bolt
5	SWM5.SB	Spring Washer M5 Black
6	SM1311.06	Rubber Foot
6.1	SM1311.06-1	Nut
7	SM1311.07	Motor Cover
8	SM1311.08	Phillips Bolt M5 x 18mm
9	SN5.SDB	Steel Nut M5 Domed Black
10	SN5.SB	Steel Nut M5 Black
12	RW519.S	Repair Washer M5 x 19mm
13	SM1311.13	Angle Gear
14	SM1311.14	Screw
15	SM1311.15	Chain
16	SM1311.16	Crank
17	SM1311.17	Plug
18	SM1311.18	Threaded Spindle, Short
19	SM1311.19	Table
20	SM1311.20	Pointer
21	SWM4.SB	Spring Washer M4 Black
22	FWM4.SB	Flat Washer M4 Black
23	MSP46.SB	Machine Screw Pan Head Phillips M4 x 6mm Black
24	SM1311.24	Wheel, Chain
25	FWM5.SB	Flat Washer M5 Black
28	SCB812.SB	Socket Cap Bolt M8 x 12mm Black
29	SM1311.29	Sleeve
30	SCB520.SB	Socket Cap Bolt M5 x 20mm Black
31	SM1311.31	Side Plate, Left
32	SM1311.32	Scale, Cutting Depth
33	SCB815.SB	Socket Cap Bolt M8 x 15mm Black
34	SM1314.W10	Spring Washer M8
35	SM1311.35	Repair Washer M8 x 20mm Black
37	SM1311.37	Locking Washer
39	SM1311.39	Rivet Nut
40	SM1311.40	Rod
41	MSP58.S	Pan Head Machine Screw M5 x 8mm
42	SM1311.42	Cable Clamp

Item	Part No.	Description
43	SM1311.43	Grommet
44	SM1311.44	Belt
45	SM1311.45	Repair Washer M5 x 14mm
47	SCB512.SB	Socket Cap Bolt M5 x 12mm Black
48	SM1311.48	Rod
50	SCB56.SB	Socket Cap Bolt M5 x 6mm Black
51	SM1311.51	Cable
52	SM1311.52	Plastic Locking Nut (c/w Strain Relief)
54	SM1311.54	Oval Deep Nut
54.2	SM1311.54-2	Spring
54.3	SM1311.54-3	Rod
54.4	SM1311.54-4	Screw
54.5	SM1311.54-5	Scale
55	SM1311.55	Locking Line
56	SM1311.56	Rubber Sleeve
58	SM1311.58	Protective Hood
59	SM1311.59	Housing, Switch
60	SM1311.60	Rd Head S/T Screw M3.5 x 12mm Black
61	SM1311.61	Thermo-Protector
62	CP1801VV3-13	Rd Head S/T Screw M3 x 20mm Black
63	SM1311.63	Rd Head S/T Screw M3 x 12mm Black
64	SMT180.38	Rd Head S/T Screw M3 x 10mm Black
65	SM1311.65	Terminal
66	SM1311.66	Power Switch
68	DAS150TV5-11	Circlip
69	SWM8.SB	Spring Washer M8 Black
70	SM1311.70	Wheel, Chain
71	SM1311.71	Square Sleeve
72	SM1311.72	Gear Wheel
73	SM1311.73	Locking Ring
74	SM1311.74	Wheel, Belt
75	SM1311.75	Wing Assembly
76	SM1311.76	Retracting Spring
77	SM1311.77	Arbor
78	SCB610.S	Socket Cap Bolt M6 x 10mm
79	SWM6.SB	Spring Washer M6 Black
80	SM1311.80	Repair Washer M6 x 20mm, Black
81	SM1311.81	Wheel, Chain

**NOTE:** It is our policy to continually improve products and as such we reserve the right to alter data, specifications and component parts without prior notice. There may be alternative versions of this product, please contact us should you require this information.

**IMPORTANT:** No liability is accepted for incorrect use of product. Spare parts must be fitted by a competent person

**WARRANTY:** Guarantee is 12 months from purchase date, proof of which will be required for any claim.

**Sealey Group**, Kempson Way, Suffolk Business Park, Bury St Edmunds, Suffolk. IP32 7AR



01284 757500



01284 703534



sales@sealey.co.uk



www.sealey.co.uk



## Parts Information: Planer/Thicknesser 200 x 120mm Model No: SM1311

Item	Part No.	Description
82	SM1311.82	Chain
83	SM1311.83	Disc, Belt
84	GSM66.S	Grub Screw M6 x 6mm
85	SM1310.98	Skt Hd Bolt M5 x 12mm
86	SM1311.86	Belt
88	SM1311.88	Rivet
91	SM1311.91	Wheel, Motor Belt
92	SM1311.92	Motor
93	B/6000ZZ	Bearing
94	SM1311.94	Bearing Cover
97	SM1311.97	Strut
98	RW619.S	Repair Washer M6 x 19mm
99	SCB510.S	Socket Cap Bolt M5 x 10mm
100	SM1311.100	Roller, Feed-Out
101	SM1311.101	Ratchet
102	SM1311.102	Roller, Feed-In
103	SM1311.103	Retracting Spring
104	SM1311.104	Bearing Bush
105	SM1311.105	Rod
106	SM1311.106	Spacer
107	SM1311.107	Ratchet
108	BHSS616.SB	Button Hd Skt Screw M6 x 16mm Black
109	SM1311.109	Clamping Device
110	SM1311.110	Blade
111	SM1311.111	Blade Stalk
111.1	SM1307.33	Bolt
111.2	SM1311.111-2	Arbor
112	SM1311.112	Bolt M4 x 10mm
113	B/BK0912	Needle Bearing
115	SM1311.115	Deflector, Sheet Metal
117	SM1311.117	Plastic Pointer
118	SM1311.118	Front Table Top
119	SM1311.119	Sliding Block
121	SM1311.121	Knob
122	SM1311.122	Arc Cover
122.1	SM1311.122-1	Screw
122.3	SN4.SB	Steel Nut M4 Black
123	SM1311.123	Knob
124	SM1311.124	Scale

Item	Part No.	Description
125	SM1311.125	Stud Bolt
126	SM1311.126	Cover
127	SM1311.127	Square Tube
127.1	SM1311.127-1	Cover
128	SM1311.128	Spacer
128.1	SM1311.128-1	Locking Ring
128.2	SM1311.128-2	Locking Ring
129	SM1310.40	Hand Knob
130	SCB428.SB	Socket Cap Bolt M4 x 28mm Black
131	SM355CE.170	Limit Switch
132	SM1311.132	Housing Cover, Switch
132.1	FWM6.SB	Flat Washer M6 Black
133	SM1311.133	Stud Bolt
134	SM1311.134	Small Pin
135	SM1311.135	Threaded Spindle, Long
136	SN6.SB	Steel Nut M6 Black
139	SM1311.139	Rear Table Top
140	SM1311.140	Blade Guard
141	SM1311.141	Spindle
142	SM1311.142	Short Pin
143	SM1311.143	Angle Instruction
144	SM1311.144	Angle Instruction
146	SM1311.146	Bolt M4 x 10mm
147	SM1311.147	Pin
148	SM1311.148	Bolt
149	SM1311.149	Knob
150	SM1311.150	Angle Piece
151	SM1311.151	Long Pin
152	SM1311.152	Guide Fence
153	SM1311.153	Clamp
154	SM1311.154	Washer
157	SM1311.157	Dust Collector
158	SM1311.158	Key
159	SM1311.159	Cover
160	HS107K.22	Rd Head S/T Screw M3 x 14mm Black
161	SM1311.161	Hand Guide
162	SM1311.162	Hex Wrench
--	SM1311.CB	Carbon Brush (Not Shown)

**NOTE:** It is our policy to continually improve products and as such we reserve the right to alter data, specifications and component parts without prior notice. There may be alternative versions of this product, please contact us should you require this information.

**IMPORTANT:** No liability is accepted for incorrect use of product. Spare parts must be fitted by a competent person

**WARRANTY:** Guarantee is 12 months from purchase date, proof of which will be required for any claim.

**Sealey Group**, Kempson Way, Suffolk Business Park, Bury St Edmunds, Suffolk. IP32 7AR



01284 757500



01284 703534



sales@sealey.co.uk



www.sealey.co.uk