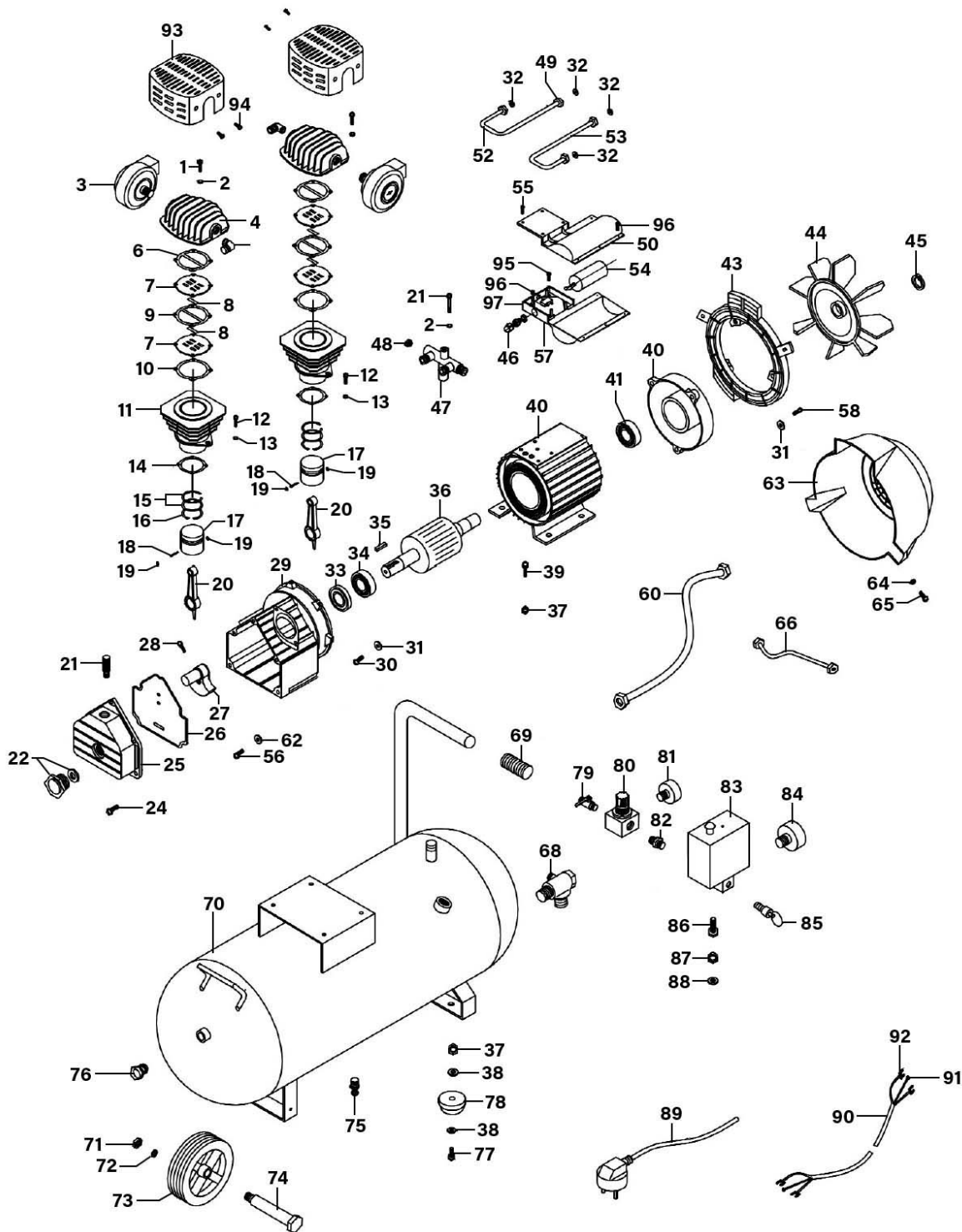




Parts Information:
**Air Compressor 50L V-Twin Direct Drive
 3hp
 Model No: SAC5030VE**



| Item | Part No. | Description |
|------|---------------|---------------------------------|
| 1 | SCB655.SB | Socket Cap Bolt M6 X 55mm Black |
| 2 | SAC5030VE.02 | Spring Washer |
| 3 | SAC5030VE2.30 | Air Filter |
| 4 | SA22503.04 | Cylinder Head |

| Item | Part No. | Description |
|------|--------------|----------------------|
| 5 | SAC0610E.04 | Elbow |
| 6 | SAC5030VE.06 | Cylinder Head Gasket |
| 7 | SAC5030VE.07 | Valve Plate |
| 8 | SA22503.08 | Valve |

NOTE: It is our policy to continually improve products and as such we reserve the right to alter data, specifications and component parts without prior notice. There may be alternative versions of this product, please contact us should you require this information.

IMPORTANT: No liability is accepted for incorrect use of product. Spare parts must be fitted by a competent person

WARRANTY: Guarantee is 12 months from purchase date, proof of which will be required for any claim.

Sealey Group, Kempson Way, Suffolk Business Park, Bury St Edmunds, Suffolk. IP32 7AR



01284 757500



01284 703534



sales@sealey.co.uk



www.sealey.co.uk



Parts Information:
**Air Compressor 50L V-Twin Direct Drive
 3hp
 Model No: SAC5030VE**

| Item | Part No. | Description |
|------|---------------|---------------------------------|
| 9 | SAC5030VE.09 | Valve Gasket |
| 10 | SAC5030VE.10 | Cylinder Gasket |
| 11 | SAC5030VE.11 | Cylinder |
| 12 | SAC5030VE.12 | Bolt (M8X25) |
| 13 | SAC5030VE.13 | Spring Washer |
| 14 | SAC5030VE.14 | Cylinder Gasket |
| 15 | SAC5030VE.15 | Piston Ring |
| 16 | SA22503.16 | Oil ring |
| 17 | SAC5030VE.17 | Piston |
| 18 | SAC5030VE.18 | Piston Pin |
| 19 | SAC5030VE.19 | Circlip |
| 20 | SAC9606129 | Con-Rod |
| 21 | SAC3103B.P44 | Breather |
| 22 | SA2225-V3.27 | Oil Sight Glass Ring |
| 24 | SAC5030VE.24 | Crankcase Cover Bolt (M6X16) |
| 25 | SA22503.25 | Front Cap |
| 26 | SAC5030VE.26 | Rubber Gasket |
| 27 | SAC5030VE.27 | Crank |
| 28 | SAC5030VE.28 | Bolt (M8X35) |
| 29 | SA22503.29 | Crankcase |
| 30 | SAC5030VE.30 | Bolt (M8X20) |
| 31 | SAC5030VE.31 | Washer |
| 32 | SAC5030VE.32 | Felt Washer |
| 33 | SAC5030VE.33 | Shaft Seal |
| 34 | B/6205-2RS | Bearing 6205-2rs |
| 35 | SAC5030VE.35 | Woodruff Key |
| 36 | SAC5030VE.36 | Rotor |
| 37 | SN8.S | Steel Nut M8 Zinc |
| 38 | FWM8.S | Flat Washer M8 Zinc |
| 39 | SAC5030VE.39 | Bolt (M8X25) |
| 40 | SAC5030VE.40 | Stator |
| 41 | B/6205-2RS | Bearing 6205-2rs |
| 43 | SAC5030VE.43 | Fan plate |
| 44 | SAC5030VE2.51 | Fan |
| 45 | SAC5030VE.45 | Fan Ring |
| 46 | SAC5030VE.46 | Collet |
| 47 | SAC5030VE.47 | Manifold |
| 48 | SAC5030VE.48 | Release Valve |
| 49 | SA22503.49 | Nut M16X1.5 Brass |
| 50 | SAC5030VE.50 | Capacitor Cover, Upper |
| 51 | SAC5030VE.51 | Bolt (M6X45) |
| 52 | SA22503.52 | Pipe 150mm Long (Includes Nuts) |
| 53 | SAC5030VE.53 | Connection Pipe (Short) |

| Item | Part No. | Description |
|------|---------------|--|
| 54 | SAC5030VE.54 | Capacitor 90uf cbb60 450v 50/60hz 100x50 |
| 55 | SAC5030VE.55 | Rd Head S/T Screw M3 X 11 |
| 56 | SAC5030VE.56 | Bolt (M8X20) |
| 57 | SAC5030VE.57 | Capacitor Cover, Lower |
| 58 | SAC5030VE.58 | Bolt (M5X40) |
| 60 | SAC5030VE.60 | Exhaust pipe |
| 62 | SWM5.S | Spring Washer M5 Zinc |
| 63 | SAC5030VE2.48 | Fan Cover |
| 64 | FWM4.S | Flat Washer M4 |
| 65 | SAC5030VE.65 | Screw (St 4.2X15) |
| 66 | SAC5030VE.66 | Unloading Pipe |
| 68 | SAC5030VE.68 | Check Valve |
| 69 | SAC5020E.69 | Handle Grip |
| 70 | SAC5030VE.70 | Tank 50ltr |
| 71 | SN10.S | Steel Nut M10 Zinc |
| 72 | SAC5030VE.72 | Spring Washer |
| 73 | SAC5030VE.73 | Wheel, Fixed Plastic (D:150 W:33 B:14) |
| 74 | SAC5030VE.74 | Wheel Shaft (C/w Nut & Washer) |
| 75 | SAC5030VE.75 | Drain Valve 1/4"bsp Male |
| 76 | SAC5030VE.76 | Tank Plug |
| 77 | SS830.S | Hex Head Set Screw M8 X 30 Zinc |
| 78 | SAC5030VE.78 | Foot |
| 79 | SAC5030VE.79 | Ball Valve 1/4"bsp Male x2 |
| 80 | SAC5030VE.80 | Regulator |
| 81 | SAC5020E.61 | Gauge 200psi, 40mm od, Rear Mounting |
| 82 | SAC5030VE.82 | Union 1/4"bsp Male x2 l;28mm |
| 83 | SAC5030VE.83 | Pressure Switch 15amp 12bar 1 |
| 84 | SAC0610E.55 | Pressure Gauge (d.50),0-200psi, Rear Fitting |
| 85 | SAC5030VE.85 | Safety Valve 1/4"bsp Male 12Bar |
| 86 | SA22503.86 | Connector |
| 87 | SAC5030VE.87 | Nut |
| 88 | SAC5030VE.88 | Washer |
| 89 | SAC5030VE.89 | Power Cord |
| 90 | SAC5030VE.90 | Motor Lead Cord |
| 91 | SAC5030VE.91 | Cable Connector (U) |
| 92 | SAC5030VE.92 | Cable Connector (O) |
| 93 | SAC5030VE.93 | Cover |
| 94 | SB973.V3-39 | Rd Head S/T Screw M4 X 12 |
| 95 | SAC5030VE.95 | Bolt (M4X8) |
| 96 | SAC5030VE.96 | Trip Switch Nut |
| 97 | SAC7386730000 | Thermal Protection |
| -- | SAC5030VE229C | Plastic Cylinder Head Cover (Not Shown) |

NOTE: It is our policy to continually improve products and as such we reserve the right to alter data, specifications and component parts without prior notice. There may be alternative versions of this product, please contact us should you require this information.

IMPORTANT: No liability is accepted for incorrect use of product. Spare parts must be fitted by a competent person

WARRANTY: Guarantee is 12 months from purchase date, proof of which will be required for any claim.

Sealey Group, Kempson Way, Suffolk Business Park, Bury St Edmunds, Suffolk. IP32 7AR



01284 757500



01284 703534



sales@sealey.co.uk



www.sealey.co.uk