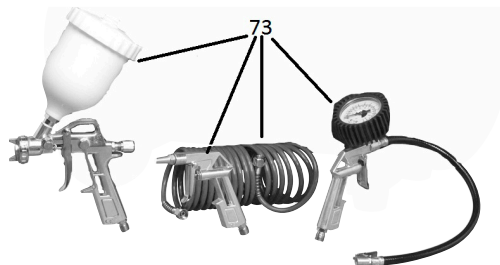
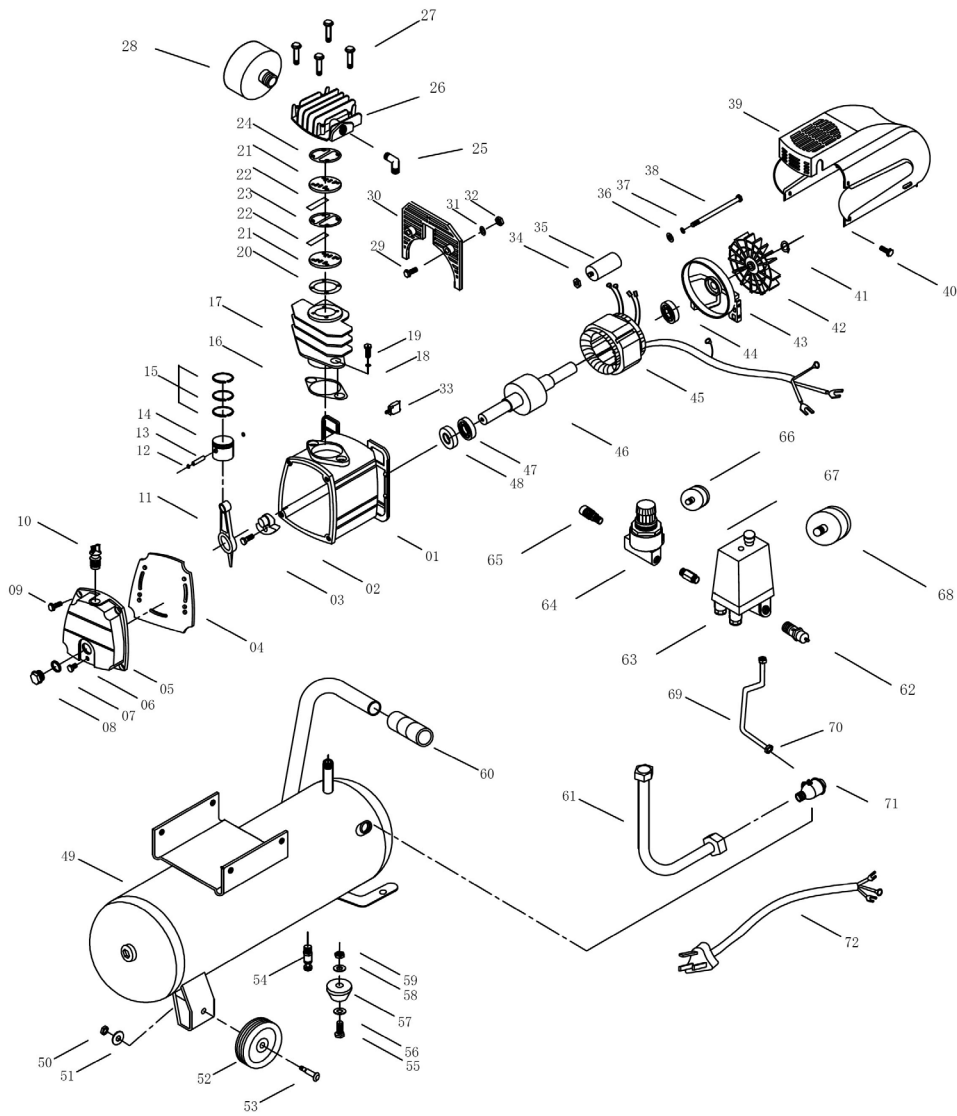




Parts Information:
Compressor 24ltr Direct Drive 2hp with
4pc Air Accessory Kit
Model No: SAC2420EPK



NOTE: It is our policy to continually improve products and as such we reserve the right to alter data, specifications and component parts without prior notice.

IMPORTANT: No liability is accepted for incorrect use of product.

WARRANTY: Guarantee is 12 months from purchase date, proof of which will be required for any claim.

Sealey Group, Kempson Way, Suffolk Business Park, Bury St Edmunds, Suffolk. IP32 7AR



01284 757500



01284 703534



sales@sealey.co.uk



www.sealey.co.uk



Parts Information:
**Compressor 24ltr Direct Drive 2hp with
4pc Air Accessory Kit
Model No: SAC2420EPK**

Item	Part No.	Description
1	SAC2420EV2.01	CRANKCASE
2	SAC2420EV2.02	CRANKSHAFT
3	SAC2420EV2.03	BOLT M8x22
4	SAC2420EV2.04	GASKET SEAL
5	SAC2420EV2.05	CRANKCASE COVER
6	SFS610.S	HEX HEAD FLANGE BOLT M6x10 SINGLE
7	SAC2420EV2.07	O-RING
8	SAC2420EV2.08	OIL SIGHT GLASS
9	SFS618.S	HEX HEAD FLANGE BOLT M6x18 SINGLE
10	SAC2420EV2.10	BREATHER
11	SAC2420EV2.11	CONNECTING ROD
12	SAC2420EV2.12	CIRCLIP
13	SAC2420EV2.13	PISTON PIN
14	SAC2420EV2.14	PISTON
15	SAC2420EV2.15	PISTON RINGS (SET OF 3)
16	SAC2420EV2.16	CYLINDER GASKET
17	SAC2420EV2.17	CYLINDER
18	SAC2420EV2.18	SPRING WASHER
19	SAC2420EV2.19	BOLT
20	SAC0610EV2.17	VALVE GASKET
21	SAC2420EV2.21	VALVE PLATE (SET OF 2)
22	SAC2420EV2.22	VALVE REED
23	SAC2420EV2.23	VALVE PLATE GASKET
24	SAC2420EV2.24	CYLINDER HEAD GASKET
25	SAC2420EV2.25	ELBOW EXHAUST
26	SAC2420EV2.26	CYLINDER HEAD
27	SAC2420EV2.27	BOLT
28	SAC2420EV2.28	AIR FILTER
29	SAC2420EV2.29	BOLT
30	SAC2420EV2.30	BAFFLE
31	SAC2420EV2.31	WASHER
32	NLN5.S	NYLOC NUT M5 ZINC DIN 985 (SINGLE)
33	SAC2420EV2.33	THERMAL CUT-OUT
34	SN8.S	STEEL NUT M8 ZINC DIN934 (SINGLE)
35	SAC2420EV2.35	CAPACITOR
36	SAC2420EV2.36	WASHER
37	SAC2420EV2.37	SPRING WASHER

Item	Part No.	Description
38	SAC2420EV2.38	BOLT
39	SAC5020EV2.39	COVER, PUMP
40	SAC2420EV2.40	BOLT
41	SAC2420EV2.41	FAN RING
42	SAC2420EV2.42	FAN
43	SAC2420EV2.43	REAR BEARING CASE
44	SAC2420EV2.44	BEARING (B/6202-2RS)
45	SAC2420EV2.45	STATOR
46	SAC2420EV2.46	ROTOR
47	B/6204-2RS	BEARING 6204-2RS
48	SAC2420EV2.48	OIL SEAL
49	SAC2420EV2.49	TANK 24ltr
50	SN10.S	STEEL NUT M10 ZINC DIN934(SINGLE)
51	FWM10.S	FLAT WASHER M10 SINGLE
52	SAC2420EV2.52	WHEEL, FIXED (120x12x32)
53	SAC2420EV2.53	WHEEL BOLT
54	SAC2420EV2.54	DRAIN VALVE
55	SS825.S	HEX HEAD SET SCREW M8x25mm SINGLE
56	SAC2420EV2.56	WASHER M8
57	SAC2420EV2.57	FOOT
58	FWM8.S	FLAT WASHER M8 SINGLE
59	SN8.S	STEEL NUT M8 ZINC DIN934 (SINGLE)
60	SAC2420EV2.60	HANDLE GRIP
61	SAC2420EV2.61	EXHAUST PIPE
62	SAC2420EV2.62	SAFETY VALVE
63	SAC5030VE2.71	PRESSURE SWITCH 20Amp 12Bar 175Psi
64	SAC2420EV2.64	REGULATOR
65	SAC2420EV2.65	QUICK VALVE
66	SAC2420EV2.66	PRESSURE GAUGE
67	SAC2420EV2.67	CONNECTOR
68	SAC2420EV2.68	PRESSURE GAUGE
69	SAC2420EV2.69	UNLOADING PIPE
70	SAC2420EV2.70	BRASS NUT DEEP
71	SAC2420EV2.71	CHECK VALVE
72	SAC2420EV2.7	2 POWER LEAD
--	SAC2420EV2.P	COMPLETE PUMP (NOT SHOWN)
73	4PCAIRKIT	4 PIECE AIR KIT

NOTE: It is our policy to continually improve products and as such we reserve the right to alter data, specifications and component parts without prior notice.

IMPORTANT: No liability is accepted for incorrect use of product.

WARRANTY: Guarantee is 12 months from purchase date, proof of which will be required for any claim.

Sealey Group, Kempson Way, Suffolk Business Park, Bury St Edmunds, Suffolk. IP32 7AR



01284 757500



01284 703534



sales@sealey.co.uk



www.sealey.co.uk