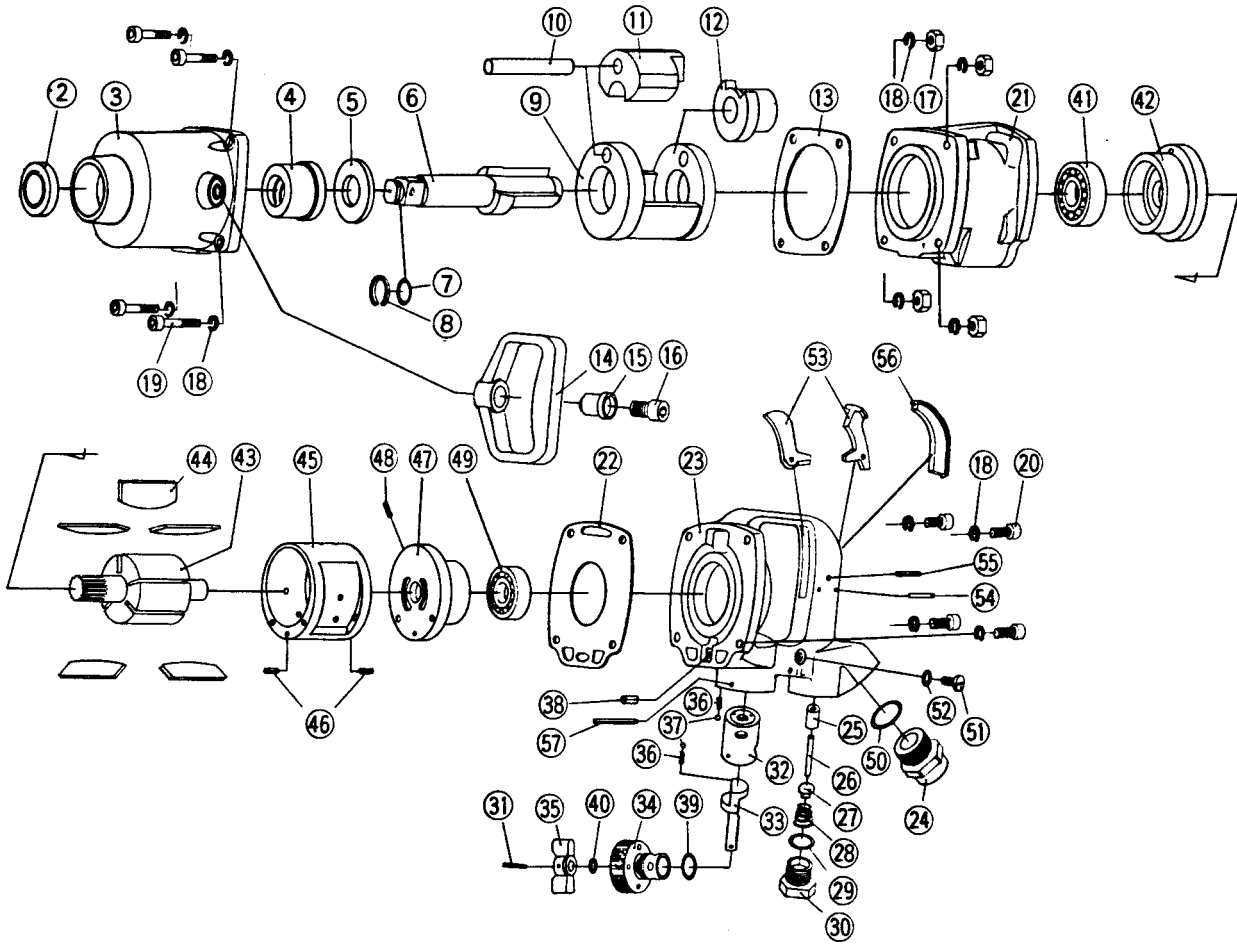


EXPLODED VIEW



PARTS LIST

PARTS NO.	NAME OF PARTS	PER SET	PARTS NO.	NAME OF PARTS	PER SET	PARTS NO.	NAME OF PARTS	PER SET
2	Oil Seal (VB25385)	1	21	Motor Case	1	40	O-Ring	1
3	Hammer Case	1	22	Motor Case Packing	1	41	Front Ball Bearing(6204Z)	1
4	Hammer Case Bushing	1	23	Handle Frame	1	42	Front End Plate	1
5	Thrust Washer	1	24	Inlet Bushing	1	43	Rotor	1
6	Anvil	1	25	Throttle Bushing	1	44	Vane	5
7	O-Ring	1	26	Throttle	1	45	Cylinder	1
8	Retainer Ring	1	27	Throttle Valve	1	46	Spring Pin	2
9	Hammer Frame	1	28	Conical Spring	1	47	Rear End Plate	1
10	Hammer Pin	1	29	O-Ring	1	48	Spring Pin	1
11	Hammer	1	30	Throttle Plug	1	49	Rear Ball Bearing(6203)	1
12	Driver	1	31	Spring Pin	1	50	O-Ring	1
13	Hammer Case Packing	1	32	Valve Bushing	1	51	Oil Plug Screw	1
14	D-Type Handle	1	33	Reverse Valve	1	52	O-Ring	1
15	Insert Washer	1	34	Adjust Valve	1	53	Trigger(inside)or(outside)	1
16	Hex. Cap Bolt	1	35	Reverse Lever	1	54	Trigger Pin	1
17	Hex. Nut	4	36	Notch Spring	2	55	Spring Pin	1
18	Spring Washer	12	37	Steel Ball	2	56	Cup Rubber(inside Trigger)	1
19	Hex. Cap Bolt	4	38	Spring Pin	1	57	Spring Pin	1
20	Hex. Cap Bolt	4	39	O-Ring	1			

SA9/2-4 HAMMER CASE ASSY
 SA9/6-8 ANVIL ASSY (SMAKAI)
 SA9/6-8 ANVIL ASSY (STD GA)