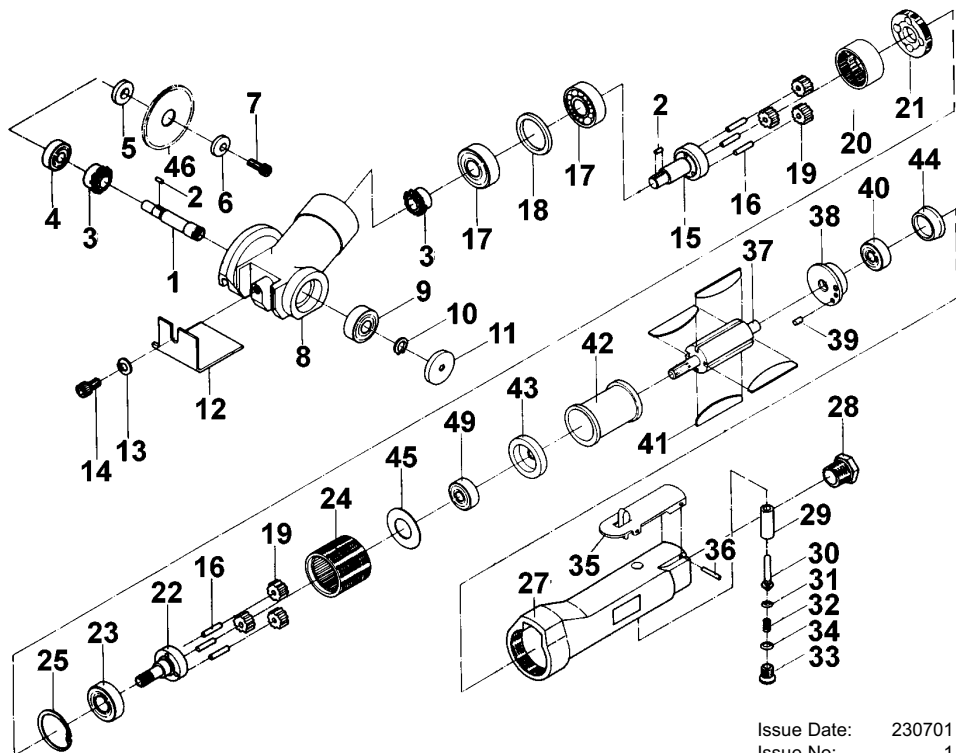


Thank you for purchasing a Sealey Product. Manufactured to a high standard this product will, if used according to these instructions and properly maintained, give you years of trouble free performance.

IMPORTANT: PLEASE READ THESE INSTRUCTIONS CAREFULLY. NOTE THE SAFE OPERATIONAL REQUIREMENTS, WARNINGS AND CAUTIONS. USE THIS PRODUCT CORRECTLY AND WITH CARE FOR THE PURPOSE FOR WHICH IT IS INTENDED. FAILURE TO DO SO MAY CAUSE DAMAGE AND/ OR PERSONAL INJURY AND WILL INVALIDATE THE WARRANTY. PLEASE KEEP INSTRUCTIONS SAFE FOR FUTURE USE.



Issue Date: 230701
Issue No: 1
Date Modified: N/A

ITEM	PART NO.	DESCRIPTION
1	SA72/01	DRIVE GEAR SHAFT
2	SA72/02	NEEDLE ROLLER
3	SA72/03	BEVEL GEAR
4	SA72/04	BEARING
5	SA72/05	SAW BLADE FLANGE HOLDER
6	SA72/06	SAW BLADE BOLT FLANGE
7	SA72/07	BOLT, HEX SOCKET CAP HEAD
8	SA72/08	BEVEL GEAR CASING (GREY)
9	SA72/09	BEARING
10	SA72/10	EXTERNAL STOP RING
11	SA72/11	CASING COVER
12	SA72/12	GUIDE PLATE
13	SA72/13	SPRING WASHER
14	SA72/14	BOLT
15	SA72/15	MAIN SHAFT
16	SA72/16	NEEDLE ROLLER
17	SA72/17	BEARING
18	SA72/18	SPACER COLLAR
19	SA72/19	IDLER GEAR
20	SA72/20	INTERNAL GEAR
21	SA72/21	BEARING SUPPORT
22	SA72/22	DRIVE SHAFT
23	SA72/23	BEARING
24	SA72/24	INTERNAL GEAR
25	SA72/25	INTERNAL STOP RING

ITEM	PART NO.	DESCRIPTION
26	SA72/26	DISTANCE NUT
27	SA72/27	THROTTLE HANDLE
28	SA72/28	AIR INLET BUSHING
29	SA72/29	THROTTLE VALVE
30	SA72/30	VALVE
31	SA72/31	O-RING
32	SA72/32	THROTTLE SPRING
33	SA72/33	THROTTLE VALVE PLUG
34	SA72/34	O-RING
35	SA72/35	THROTTLE LEVER
36	SA72/36	SPRING PIN
37	SA72/37	ROTOR
38	SA72/38	REAR END PLATE
39	SA72/39	SPRING PIN
40	SA72/40	BEARING
41	SA72/41	ROTOR BLADE
42	SA72/42	CYLINDER
43	SA72/43	FRONT END PLATE
44	SA72/44	BEARING CAP
45	SA72/45	WASHER
46	SA72/B	BLADE, 50x1x12.7mm 150 TPU. HSS
47	SA72/47	WRENCH, L-SHAPED
48	SA72/48	WRENCH, HEX, L-SHAPED
49	SA72/49	BEARING

1. SAFETY INSTRUCTIONS

- p **WARNING!** Ensure Health & Safety, local authority, and general workshop practice regulations are adhered to when using this equipment.
- p **WARNING!** Disconnect from air supply before changing the blade, servicing or performing maintenance.
- 3 Maintain the saw in good condition (use an authorised service agent).
- 3 Replace or repair damaged parts. Use genuine parts only. Non-authorized parts may be dangerous and will invalidate the warranty.
- 3 Use in suitable clean and tidy working area, free from unrelated materials and ensure there is adequate lighting.
- p **WARNING!** Always wear approved eye or face and hand protection when operating the saw
- 3 Remove ill fitting clothing. Remove ties, loose jewellery, and contain and/or tie back long hair.
- 3 Wear appropriate protective clothing and keep hands and body clear of working parts.
- 3 Maintain correct balance and footing. Ensure the floor is not slippery and wear non-slip shoes.
- 3 Keep children and unauthorised persons away from the working area.
- 3 Check moving parts alignment on a regular basis.
- 3 Ensure workpiece is secure before operating the saw. Never hold a workpiece by hand. Use a vice or clamps.
- p **WARNING!** Ensure correct air pressure is maintained and not exceeded. Recommended pressure 50-90psi.
- 3 Keep air hose away from heat, oil and sharp edges. Check air hose for wear before each use and ensure that all connections are secure.
- 3 Prolonged exposure to vibration from this saw poses a health risk. It is the Employers/Owners and operator's responsibility to correctly assess the potential hazard and issue guidelines for safe periods of use and offer suitable protective equipment.
- 7 DO NOT use any power source except an air compressor.
- 7 DO NOT operate the saw near any inflammable substance or on any container that once contained an inflammable substance.
- 7 DO NOT use the saw for a task it is not designed to perform.
- 7 DO NOT operate saw if any parts are damaged or missing as this may cause failure and/or personal injury.
- 7 DO NOT carry the saw by the hose, or yank the hose from the air supply.
- 7 DO NOT operate saw when you are tired, under the influence of alcohol, drugs or intoxicating medication.
- 7 DO NOT carry the saw with your finger on the trigger.
- 7 DO NOT direct air from the air hose at yourself or others.
- 3 When not in use disconnect from air supply and store in a safe, dry, childproof location.

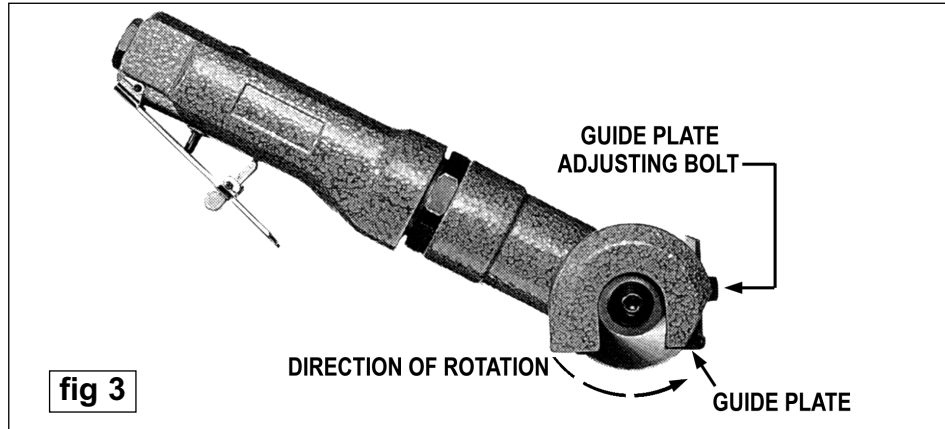


NOTE: It is our policy to continually improve products and as such we reserve the right to alter data, specifications and component parts without prior notice. **IMPORTANT:** No liability is accepted for incorrect use of this equipment. **WARRANTY:** Guarantee is 12 months from purchase date, proof of which will be required for any claim. **INFORMATION:** Call us for a copy of our latest catalogue and promotions on 01284 757525 and leave your full name and address including your postcode.

2. INTRODUCTION & SPECIFICATION

The SA72 has an aluminium housing which has an integral safety guard. The unit also has a safety trigger control. It is suitable for cutting steel up to a maximum thickness of 2mm, and aluminium sheet up to a maximum of 8mm.

Free speed600 rpm	Air Inlet	1/4" BSP
Operating Pressure90psi	Weight	1.6kg
Air Consumption6cfm	Saw blade	SA72/B



4. OPERATING INSTRUCTIONS

- ⓘ **WARNING! Ensure you read, understand and apply safety instructions before use.**
- 4.1 The saw is designed to cut with the black guide plate flat against the surface being cut. To aid this the cutting blade cuts **upwards** to help to draw the guide plate down onto the workpiece.
- 4.2 Loosen the hex bolt at the front of the guide plate and adjust the height of the plate so that the cutting depth is slightly deeper than the sheet material to be cut.
- 4.3 Ensure that your workpiece is properly secured and marked out. Rest the leading edge of the saw's guide plate onto the edge of the workpiece and align the blade with the previously marked out line.
- 4.4 When you are satisfied with the alignment, start the saw and progress steadily along the marked line with the guide plate flat to the cutting surface.
- 4.5 If the cut stops within the sheet material allow the blade to come to a stop before removing the saw from the workpiece.
- 4.6 If the cut starts within the bounds of the material cut a starter slot by hand to drop the blade into.
- 4.7 Do not allow the saw to run freely for any length of time as this will damage the bearings.
- 4.8 To change the blade firstly disconnect the saw from the airline. Loosen the hex socket bolt using a 4mm key and remove the bolt, washer and retaining disc. Lift the blade upwards from its mounting boss and slide it down and out of the guard. When fitting the new blade, be sure to orientate it so that the teeth will be cutting upwards. (see direction of rotation in fig.3.) When replacing the retaining disc make sure that the two spigots on the back of the disc engage in the slots in the blade mounting boss. Replace the washer and bolt and fully tighten.

5. MAINTENANCE

- ⓘ **WARNING! Disconnect saw from air supply before changing the blade, servicing or performing maintenance. Replace or repair damaged parts.**
Use genuine parts only. Non-authorized parts may be dangerous and will invalidate the warranty.
- 5.1 Lubricate the air saw daily with a few drops of the air tool oil supplied, dripped into the air inlet before use. (To re-order air tool oil use Sealey part Nos. ATO/500 or ATO1000.)
- 5.2 Loss of power or erratic action may be due to the following:
 - a) Excessive drain on the air line. Moisture or restriction in the air pipe. Incorrect size or type of hose connectors. To remedy check the air supply and follow instructions in chapter 3.
 - b) Grit or gum deposits in the saw may also reduce performance. If your model has an air strainer (located in the area of the air inlet), remove the strainer and clean it. Flush the saw out with gum solvent oil or an equal mixture of SAE No 10 oil and kerosene. Allow to dry before use.

If you continue to experience problems, contact your local Sealey service agent.
- 5.3 For a full service contact your local Sealey service agent.
- 5.4 When not in use, disconnect from air supply, clean saw and store in a safe, dry, childproof location.

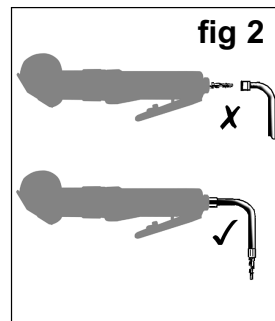
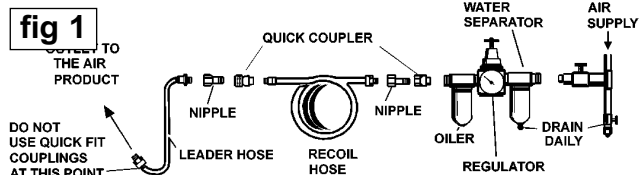
3. PREPARING SAW FOR USE

3.1. Air Supply

- 3.1.1. Remove protective plug from air inlet and connect to the air supply as described below.
- 3.1.2. You will require an air pressure of 90psi, and an air flow according to the specification above.
- 3.1.3. ⓘ **WARNING! Ensure the air supply is clean and does not exceed 90 psi while operating the saw.**
Too high an air pressure and unclean air will shorten the product life due to excessive wear, and may be dangerous causing damage and/or personal injury.
- 3.1.4. Drain the air tank daily. Water in the air line will damage the saw **and will invalidate your warranty.**
- 3.1.5. Clean air inlet filter weekly. Recommended hook-up procedure is shown in fig 1.
- 3.1.6. Line pressure should be increased to compensate for unusually long air hoses (over 8 metres). The minimum hose diameter should be 1/4" I.D. and fittings must have the same inside dimensions.
- 3.1.7. Keep hose away from heat, oil and sharp edges. Check hoses for wear, and make certain that all connections are secure.

3.2. Couplings.

Vibration may cause failure if a quick change coupling is connected directly to the air saw. To overcome this, connect a leader hose to the saw. A quick change coupling may then be used to connect the leader hose to the air line recoil hose. See fig 1 & 2.



Declaration of Conformity

CE We, the sole importer into the UK, declare that the product listed here is in conformity with the following EEC standards and directives. The construction file for this product is held by the Manufacturer and may be inspected, by a national authority, upon request to Jack Sealey Ltd.

**Air Sheet Saw
Model: SA72**

98/37/EC Machinery Directive
93/68/EEC Marking Directive

Signed by Mark Sweetman

23rd July 2001

For Jack Sealey Ltd. Sole importer into the UK of Sealey Power Products.