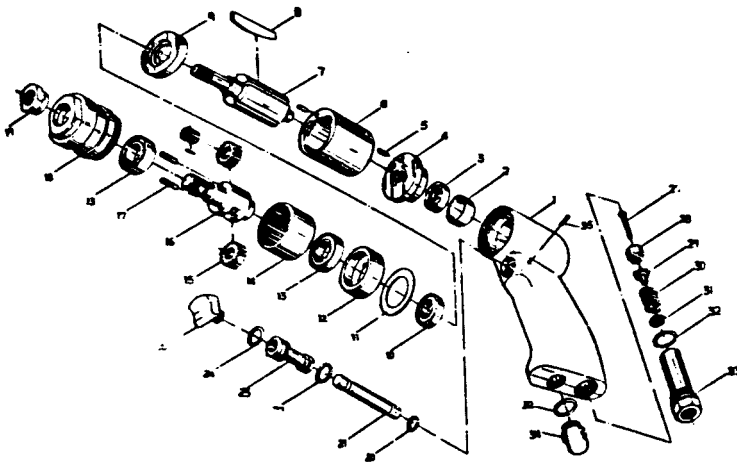
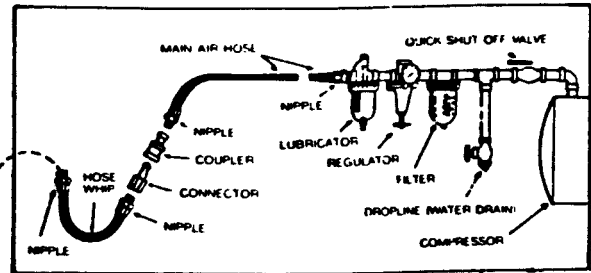


# 3/8" AIR DRILL

MODEL NO: SA63

## AIR SUPPLY CONNECTIONS:



Item No.	Parts No.	Description	Qty
1	IM-20101	Body With Bushing	1
2	IM-20102	Rear Bearing Cap	1
3	SP-10329	Ball Bearing	1
4	PP-20104	Rear End Plate	2
5	SP-10118	Spring Pin	2
6	PP-20106	Cylinder	1
7	LM-20107	Rotor	1
8	IM-20108	Vanes	4
9	PP-20109	Front Plate	1
10	SP-10124	Ball Bearing	1
11	PM-20111	Washer	1
12	PP-20112	Bearing Cap	1
13	SP-20113	Ball Bearing	2
14	TM-20114	Internal Gear	1
15	TM-20115	Planet Wheel	2
16	LM-20116	Planet Cage	1
17	LM-20117	Planet Pin	2
18	LM-20118	Clamp Nut	1
19	LM-20119	Spindle Nut	1
20	SP-20120	C-Ring	1
21	LM-20121	Valve Spindle	1
22	SP-20122	O-Ring	1
23	LM-20123	Valve Body	1
24	Sp-20124	O-Ring	1
26	IM-20126	Trigger	1
27	SP-20127	Valve Pin	1
28	LM-20128	Valve Bushing	1
29	IM-20129	Valve	1
30	SP-20130	Spring	1
31	PM-20131	Filter	1
32	SP-20132	O-Ring	2
33	LM-20133	Air Inlet	1
34	PP-20134	End Cap	1
35	SP-20135	Spring Pin	1

Free Speed (R.P.M.)	Capacity	Length (in.)	Weight (lbs.)	Spindle Thr'd	Inlet Size (NPT)	Air Pressure (PSI)	Air Cons. (CFM)
2200	3/8"	7	2%	3/8"x24UNF	1/4	.90	4

The types and specifications may be changed with or without notice.

88-06-201