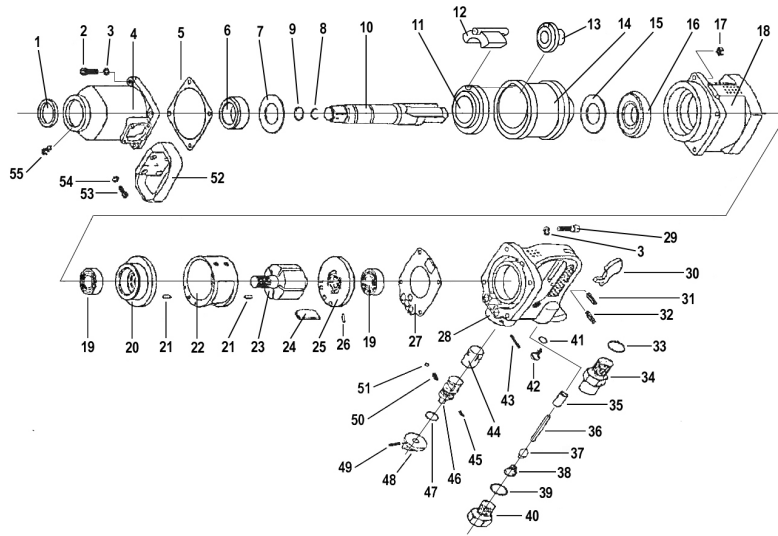




Parts Information:
**Air Impact Wrench 1" Sq Drive Straight
 Long Anvil
 Model No: SA291.V3**



Item	Part No.	Description
1	SA291.V3-01	FRONT OIL SEAL
2	SCB840.SB	SOCKET HEAD CAP SCREW M8x40 BLACK
3	SWM8.SB	SPRING WASHER M8 BLACK(SINGLE)
4	SA291.V3-04	HAMMER CASE ASSY
5	SA291.V3-05	GASKET
6	SA291.V3-06	BUSHING
7	SA291.V3-07	RETAINING WASHER
8	SA291.V3-08	RETAINING RING
9	SA291.V3-09	O-RING
10	SA291.V3-10	ANVIL
11	SA291.V3-11	HAMMER CAGE LINING
12	SA291.V3-12	HAMMER
13	SA291.V3-13	CAM
14	SA291.V3-14	HAMMER CAGE
15	SA291.V3-15	CAM WASHER
16	B/6208ZZ	BEARING 6208ZZ
17	NLN8.S	NYLOC NUT M8 ZINC DIN 985 (SINGLE)
18	SA291.V3-18	HOUSING
19	B/6205ZZ	BEARING 6205ZZ
20	SA291.V3-20	FRONT END PLATE
21	SA291.V3-21	SPRING PIN M6X18
22	SA291.V3-22	CYLINDER
23	SA291.V3-23	ROTOR
24	SA291.V3-24	ROTOR BLADE (6 BLADES PER MACHINE)
25	SA291.V3-25	REAR END PLATE
26	SA291.V3-26	SPRING PIN M4.3 X 8
27	SA291.V3-27	REAR COVER GASKET
28	SA291.V3-28	REAR COVER

Item	Part No.	Description
29	SCB835.SB	SOCKET HEAD CAP SCREW M8x35 BLACK
30	SA291.V3-30	TRIGGER
31	SA291.V3-32	SPRING PIN M4X22
32	SA291.V3-32	SPRING PIN M4X22
33	SA291.V3-33	O-RING
34	SA291.V3-34	INLET CONNECTOR
35	SA291.V3-35	INLET VALVE BUSHING
36	SA291.V3-36	VALVE PIN
37	SA291.V3-37	PLUG
38	SA291.V3-38	VALVE SPRING
39	SA291.V3-39	O-RING
40	SA291.V3-40	SET SCREW
41	SA291.V3-41	O-RING
42	BHSS810.SB	BUTTON HEAD SOCKET SCREW M8x10 BLACK
43	SA291.V3-43	SPRING PIN M4X30
44	SA291.V3-44	REVERSE VALVE BUSHING
45	SA291.V3-45	M6 WASHER BLACK
46	SA291.V3-46	REVERSE VALVE
47	SA291.V3-47	O-RING
48	SA291.V3-48	REVERSE KNOB
49	SA291.V3-49	SPRING PIN M3.2 X 18
50	SA291.V3-50	SPRING
51	SB-4.0	STEEL BALL 4.0mm
52	SA291.V3-52	HANDLE
53	SCB620.SB	SOCKET HEAD CAP SCREW M6x20 BLACK
54	SWM6.SB	SPRING WASHER M6 BLACK(SINGLE)
55	BHSS810.SB	BUTTON HEAD SOCKET SCREW M8x10 BLACK

NOTE: It is our policy to continually improve products and as such we reserve the right to alter data, specifications and component parts without prior notice.

IMPORTANT: No liability is accepted for incorrect use of product.

WARRANTY: Guarantee is 12 months from purchase date, proof of which will be required for any claim.

Sealey Group, Kempson Way, Suffolk Business Park, Bury St Edmunds, Suffolk. IP32 7AR



01284 757500



01284 703534



sales@sealey.co.uk



www.sealey.co.uk