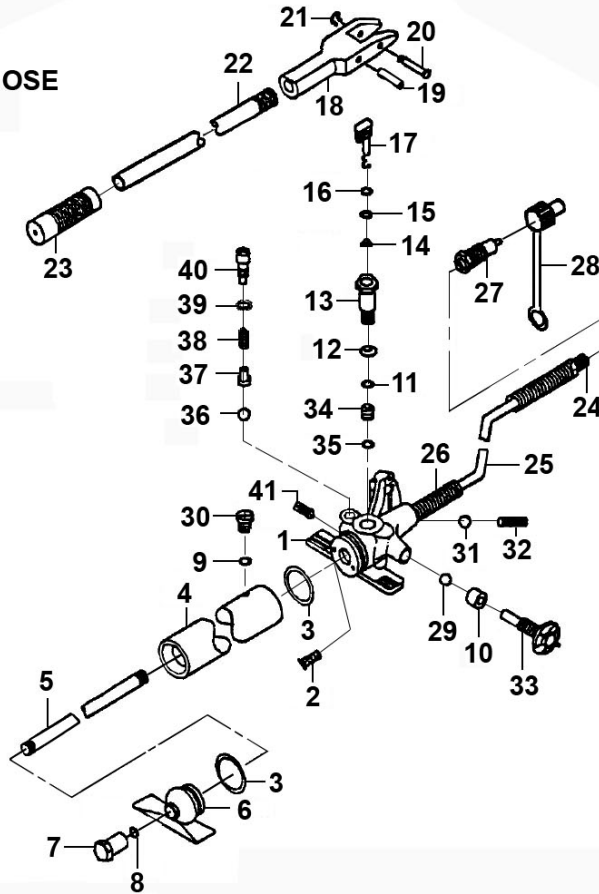
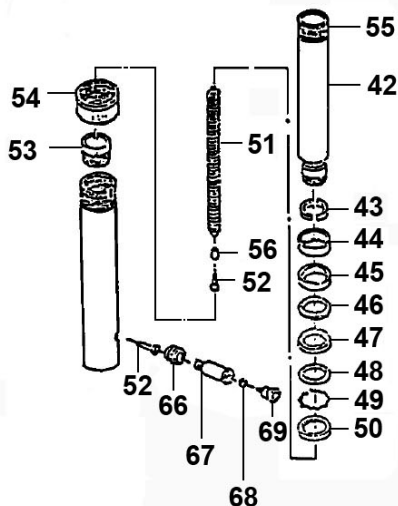


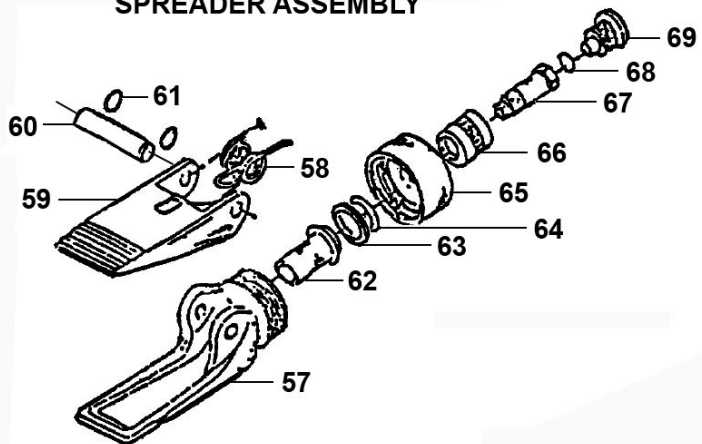
**PUMP AND HOSE ASSEMBLY**



**RAM ASSEMBLY**



**SPREADER ASSEMBLY**



**NOTE:** It is our policy to continually improve products and as such we reserve the right to alter data, specifications and component parts without prior notice. There may be alternative versions of this product, please contact us should you require this information.

**IMPORTANT:** No liability is accepted for incorrect use of product. Spare parts must be fitted by a competent person

**WARRANTY:** Guarantee is 12 months from purchase date, proof of which will be required for any claim.



Parts Information:  
**Hydraulic Body Repair Kit 10tonne  
 SuperSnap® Type  
 Model No: RE83-10**

Item	Part No.	Description
1	610/PJ01	Pump Housing
2	610/PJ02	Filter
3	610/PJ03	Seal
4	610/PJ04	Pump Reservoir
5	610/PJ05	Screw
6	610/PJ06	Pump Foot
7	610/PJ07	Retaining Cap (M12 int thread)
8	610/PJ08	O-Ring
9	610/PJ09	O-Ring Seal
10	610/PJ10	Spacer
11	610/PJ11	Seal
12	610/PJ12	Washer Dished M20x30
13	610/PJ13	Cylinder
14	610/PJ14	Filter Ring
15	610/PJ15	Seal
16	610/PJ16	Washer (Split Nylon)M7
17	610/PJ17	Plunger
18	610/PJ18	Pump Pivot Brm Arm
19	610/PJ19	Pivot Arm Pin
20	610/PJ20	Pivot Arm Pin
21	610/PJ21	Circlip
22	610/PJ22	Pump Handle
23	610/PJ23	Grip, Rubber Sleeve
24	610/PJ24	Oil Fitting
25	610/PJ25	Hose
26	610/PJ26	Spring
27	610/PJ27	Coupling
28	610/PJ28	Dust Cap
29	SB-4.7	Steel Ball 4.7mm
30	610/PJ30	Screw
31	SB-5.0	Steel Ball 5.0mm
32	610/PJ32	Spring
33	610/PJ33	Stem, Release Valve
34	610/PJ34	Valve
35	610/PJ35	Washer M8
36	SB-5.0	Steel Ball 5.0mm
37	610/PJ37	Stem

Item	Part No.	Description
38	610/PJ38	Spring Dia 7.8mm
39	610/PJ39	O-Ring, (Ex: 11.94 In: 6.20 Cs: 2.87)
40	610/PJ40	Screw
41	610/PJ41	Screw (Safety Valve)
--	610/PJ27-28	Coupling + End Cap (Not Shown)
42	610/RJ04	Ram
43	610/RJ05	Half Bush
44	610/RJ06	Bushing
45	610/RJ07	Cap (Nylon)
46	610/RJ08	Cap (Teflon)
47	610/RJ09	Cap (Uletan)
48	610/RJ10	Spreader
49	610/RJ11	Washer 32x40
50	610/RJ12	Ext Circlip 22.0mm ID.
51	610/RJ13	Spring
52	610/RJ14	Screw Set (M6x30 & M6x20 Socket Head)
53	610/RJ15	Ring
54	610/RJ16	Protecting Cap
55	610/RJ17	Brass Retainer Nut
56	610/RJ18	Bushing
--	610/RJ02	Cylinder (Not Shown)
57	610/SJ01	Lower Duck Bill
58	610/SJ02	Spring
59	610/SJ03	Upper Duck Bill
60	610/SJ04	Pivoting Pin
61	610/SJ05	Circlip
62	610/SJ06	Piston
63	610/SJ07	Cup Seal
64	610/SJ08	Rubber Washer M22 x M32
65	610/SJ09	End Cap
66	610/SJ10	Coupling Ring
67	610/SJ15	Bolt m13x25
68	610/SJ16	Bolt o-ring
69	610/SJ17	Dust cap

**NOTE:** It is our policy to continually improve products and as such we reserve the right to alter data, specifications and component parts without prior notice. There may be alternative versions of this product, please contact us should you require this information.

**IMPORTANT:** No liability is accepted for incorrect use of product. Spare parts must be fitted by a competent person

**WARRANTY:** Guarantee is 12 months from purchase date, proof of which will be required for any claim.

**Sealey Group**, Kempson Way, Suffolk Business Park, Bury St Edmunds, Suffolk. IP32 7AR



01284 757500



01284 703534



sales@sealey.co.uk



www.sealey.co.uk