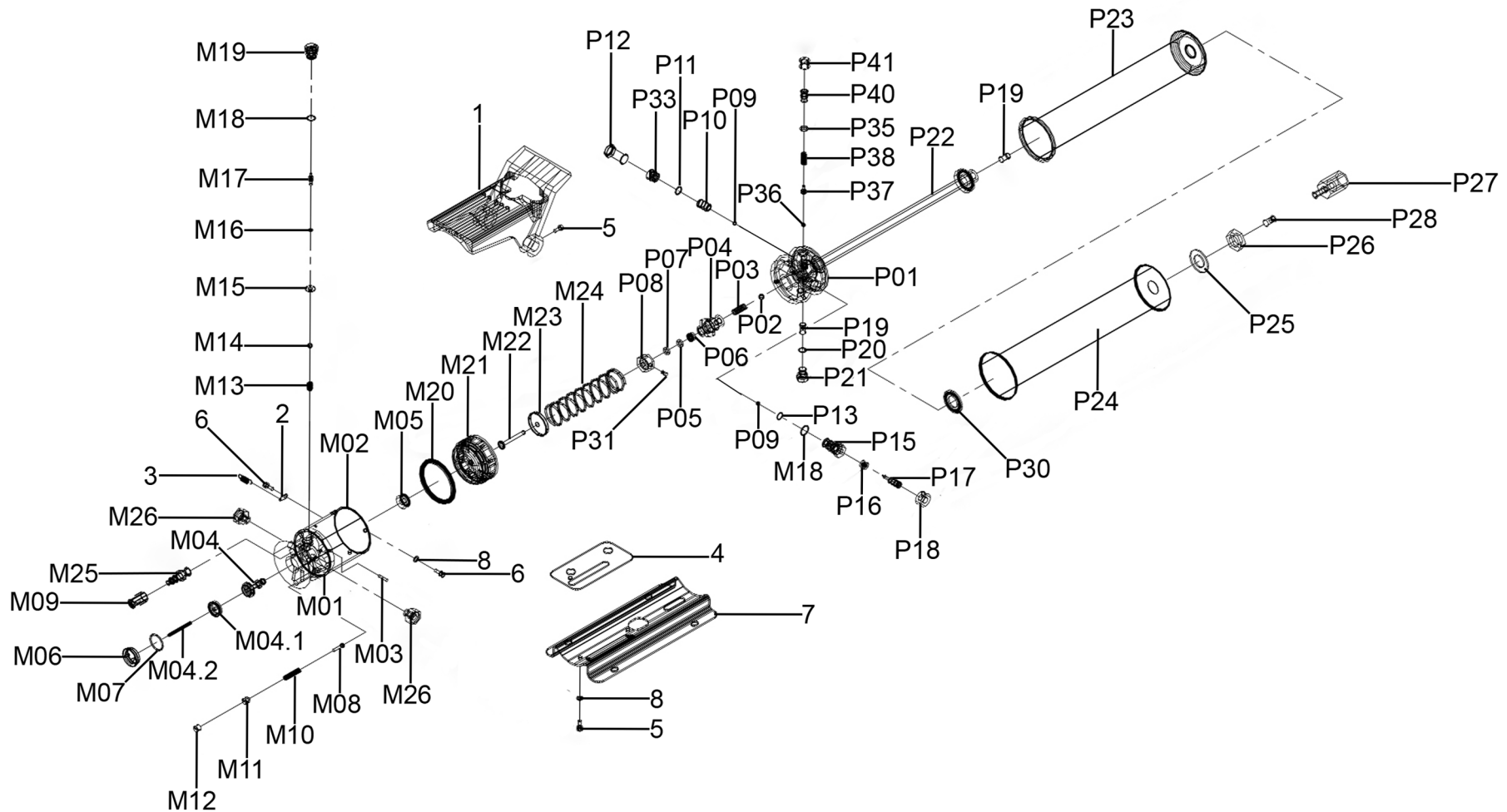




Parts Information:  
**Air Hydraulic Pump 10tonne**  
**Model No: RE83/840.V2**



**NOTE:** It is our policy to continually improve products and as such we reserve the right to alter data, specifications and component parts without prior notice.

There may be alternative versions of this product, please contact us should you require this information.

**IMPORTANT:** No liability is accepted for incorrect use of product. Spare parts must be fitted by a competent person

**WARRANTY:** Guarantee is 12 months from purchase date, proof of which will be required for any claim.

Sealey Group, Kempson Way, Suffolk Business Park, Bury St Edmunds, Suffolk. IP32 7AR



01284 757500



01284 703534



sales@sealey.co.uk



www.sealey.co.uk



Parts Information:  
Air Hydraulic Pump 10tonne  
Model No: RE83/840.V2

| Item  | Part No.    | Description                     |
|-------|-------------|---------------------------------|
| 1     | 840.V2-01   | Treadle                         |
| 2     | 840.V2-02   | Hook Washer, Spring             |
| 3     | 840.V2-03   | Spring                          |
| 4     | 840.V2-04   | Gasket                          |
| 5     | SCB516.SB   | Socket Cap Bolt M5 x 16mm Black |
| 6     | SCB512.SB   | Socket Cap Bolt M5 x 12mm Black |
| 7     | 840.V2-07   | Base                            |
| 8     | 840.V2-08   | Int Tooth Washer M5             |
| M01   | 840.V2-M01  | Motor                           |
| M02   | 840.V2-M02  | Sleeve, Motor                   |
| M03   | 840.V2-M03  | Pin                             |
| M04   | 840.V2-M04  | Valve Stem                      |
| M04.1 | 840.V2-M04A | Seal Cap                        |
| M04.2 | 840.V2-M04B | Spring                          |
| M05   | 840.V2-M05  | Seal Cap                        |
| M06   | 840.V2-M06  | Exhaust Plug                    |
| M07   | 840.V2-M07  | O-Ring                          |
| M08   | 840.V2-M08  | Stem                            |
| M09   | 840.V2-M09  | Plastic Cover, Coupling         |
| M10   | 840.V2-M10  | Spring                          |
| M11   | 840.V2-M11  | Screw                           |
| M12   | 840.V2-M12  | Plug                            |
| M13   | 840.V2-M13  | Spring                          |
| M14   | SB-7.2      | Steel Ball                      |
| M15   | 840.V2-M15  | Washer, Rubber M6 x 14mm        |
| M16   | SA401.03    | O-Ring                          |
| M17   | 840.V2-M17  | Stem                            |
| M18   | 840.V2-M18  | O-Ring                          |
| M19   | 840.V2-M19  | Plug                            |
| M20   | 840.V2-M20  | Piston Ring                     |
| M21   | 840.V2-M21  | Piston                          |
| M22   | 840.V2-M22  | Plunger                         |
| M23   | 840.V2-M23  | Washer, Cap                     |
| M24   | 840.V2-M24  | Spring                          |
| M25   | 840.V2-M25  | Coupling                        |
| M26   | 840.V2-M26  | Silencer Bolt                   |
| P01   | 840.V2-P01  | Pump Base                       |

| Item | Part No.     | Description              |
|------|--------------|--------------------------|
| P02  | SB-8.0       | Steel Ball               |
| P03  | 840.V2-P03   | Spring                   |
| P04  | 840.V2-P04   | Pump Cylinder            |
| P05  | 840.V2-P05   | Packing                  |
| P06  | 840.V2-P06   | Seal Ring                |
| P07  | 840.V2-P07   | Washer, Brass            |
| P08  | 840.V2-P08   | Nut                      |
| P09  | SB-5.5       | Steel Ball               |
| P10  | 840.V2-P10   | Spring                   |
| P11  | DH03.V2-39   | O-Ring                   |
| P12  | 840.V2-P12   | Check Valve              |
| P13  | SA57.32      | O-Ring                   |
| P15  | 840.V2-P15   | Release Valve            |
| P16  | 840.V2-P16   | Spring Conical           |
| P17  | 840.V2-P17   | Release Retainer         |
| P18  | 840.V2-P18   | Ring                     |
| P19  | 840.V2-P19   | Filter                   |
| P20  | 840.V2-P20   | Seal Ring                |
| P21  | 840.V2-P21   | Screw                    |
| P22  | 840.V2-P22   | Hydraulic Hose           |
| P23  | 840.V2-P23   | Oil Reservoir            |
| P24  | 840.V2-P24   | Reservoir                |
| P25  | FWM18.S      | Flat Washer M18          |
| P26  | 840.V2-P26   | Half Nut, Black 3/4" UNF |
| P27  | 840.V2-P27   | Adaptor                  |
| P28  | 840.V2-P28   | Screw                    |
| P30  | 840.V2-P30   | Washer, Nylon M18        |
| P31  | GSM55.S      | Grub Screw M5 x 5mm      |
| P33  | 840.V2-P33   | Bolt, Check Valve        |
| P35  | RE231.V3-P36 | O-Ring                   |
| P36  | SB-4.7       | Steel Ball               |
| P37  | 840.V2-P37   | Safety Valve             |
| P38  | 840.V2-P38   | Spring                   |
| P40  | 840.V2-P40   | Screw, Safety Valve      |
| P41  | 840.V2-P41   | Plastic Cap              |
| --   | 840.V2-RK    | Repair Kit (Not Shown)   |

**NOTE:** It is our policy to continually improve products and as such we reserve the right to alter data, specifications and component parts without prior notice. There may be alternative versions of this product, please contact us should you require this information.

**IMPORTANT:** No liability is accepted for incorrect use of product. Spare parts must be fitted by a competent person

**WARRANTY:** Guarantee is 12 months from purchase date, proof of which will be required for any claim.

Sealey Group, Kempson Way, Suffolk Business Park, Bury St Edmunds, Suffolk. IP32 7AR



01284 757500



01284 703534



sales@sealey.co.uk



www.sealey.co.uk