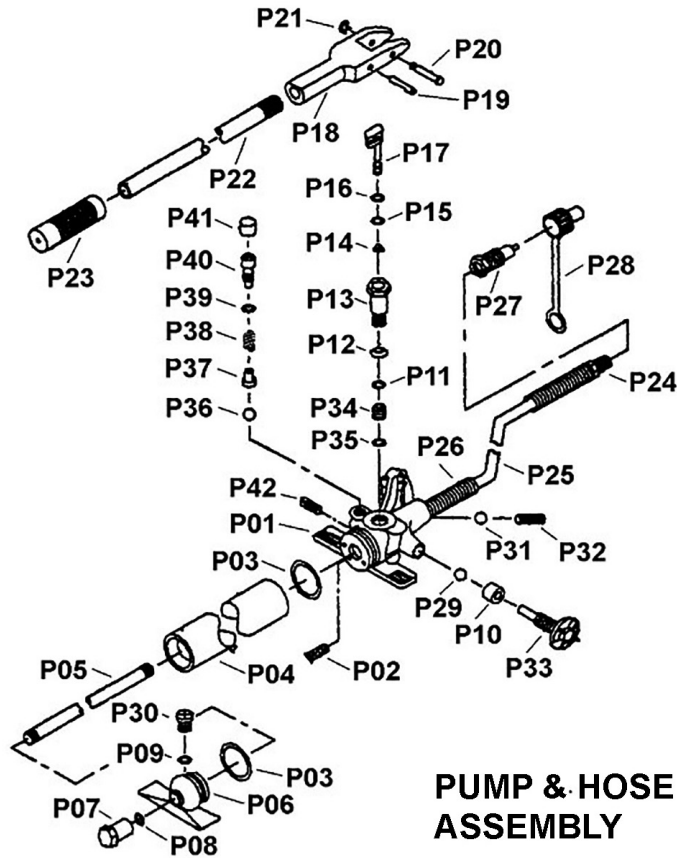


Parts Information: Hydraulic Body Repair Kit 10tonne SuperSnap® Type Model No: RE83/10.V2



PUMP & HOSE ASSEMBLY

| Item | Part No. | Description |
|------|----------|--|
| P01 | 610/PJ01 | Pump Housing |
| P02 | 610/PJ02 | Filter |
| P03 | 610/PJ03 | O-Ring, (Ex: 51.57 In: 45.17 Cs: 3.20) |
| P04 | 610/PJ04 | Pump Reservoir |
| P05 | 610/PJ05 | Screw |
| P06 | 610/PJ06 | Pump Foot |
| P07 | 610/PJ07 | Retaining Cap (M12 Int Thread) |
| P08 | 610/PJ08 | O-Ring, (Ex: 20.34 In: 15.50 Cs: 2.42) |
| P09 | 610/PJ09 | O-Ring, (Ex: 12.83 In: 7.59 Cs: 2.62) |
| P10 | 610/PJ10 | Spacer |
| P11 | 610/PJ11 | O-Ring, (Ex: 25.72 In: 18.66 Cs: 3.53) |
| P12 | 610/PJ12 | Washer Dished M20x30 |
| P13 | 610/PJ13 | Cylinder |
| P14 | 610/PJ14 | Filter Ring |
| P15 | 610/PJ15 | O-Ring, (Ex: 12.49 In: 6.72 Cs: 3.39) |
| P16 | 610/PJ16 | Washer(Split Nylon) M7 |
| P17 | 610/PJ17 | Plunger |
| P18 | 610/PJ18 | Pump Pivot Brm Arm |
| P19 | 610/PJ19 | Pivot Arm Pin |
| P20 | 610/PJ20 | Pivot Arm Pin |
| P21 | 610/PJ21 | Circlip |
| P22 | 610/PJ22 | Pump Handle |

| Item | Part No. | Description |
|------|-------------|---------------------------------------|
| P23 | 610/PJ23 | Grip, Rubber Sleeve |
| P24 | 610/PJ24 | Oil Fitting |
| P25 | 610/PJ25 | Hose |
| P26 | 610/PJ26 | Spring |
| P27 | 610/PJ27 | Coupling |
| -- | 610/PJ27-28 | Coupling + End Cap (not shown) |
| P28 | 610/PJ28 | Dust Cap |
| P29 | SB-4.7 | Steel Ball 4.7mm |
| P30 | 610/PJ30 | Screw |
| P31 | SB-5.0 | Steel Ball 5.0mm |
| P32 | 610/PJ32 | Spring Conical |
| P33 | 610/PJ33 | Stem, Release Valve |
| P34 | 610/PJ34 | Valve |
| P35 | 610/PJ35 | Washer M8 |
| P36 | SB-5.0 | Steel Ball 5.0mm |
| P37 | 610/PJ37 | Stem |
| P38 | 610/PJ38 | Spring Dia 7.8mm |
| P39 | 610/PJ39 | O-Ring, (Ex: 11.94 In: 6.20 Cs: 2.87) |
| P40 | 610/PJ40 | Screw |
| P41 | 610/PJ41 | Cap |
| P42 | 610/PJ42 | Screw (Safety Valve) |

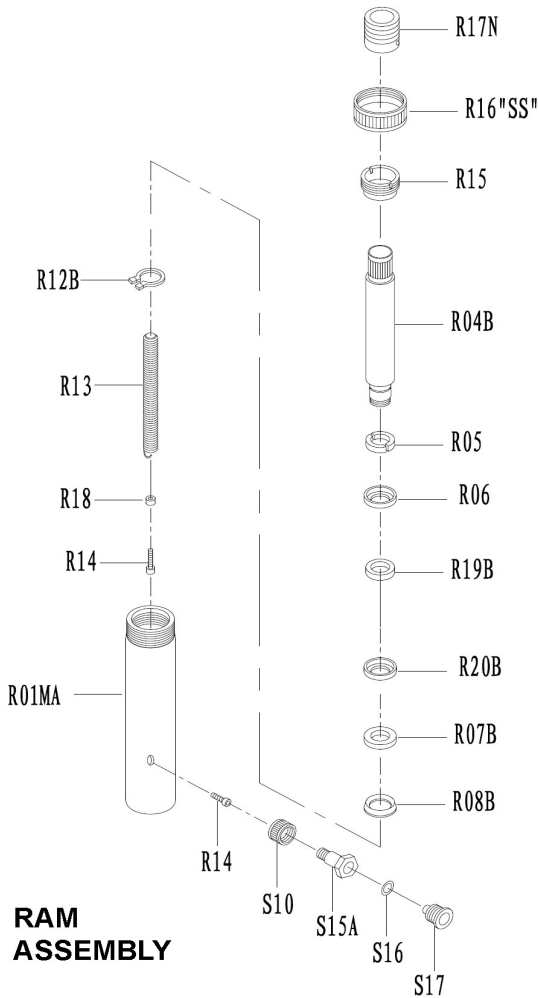
NOTE: It is our policy to continually improve products and as such we reserve the right to alter data, specifications and component parts without prior notice.

IMPORTANT: No liability is accepted for incorrect use of product.

WARRANTY: Guarantee is 12 months from purchase date, proof of which will be required for any claim.

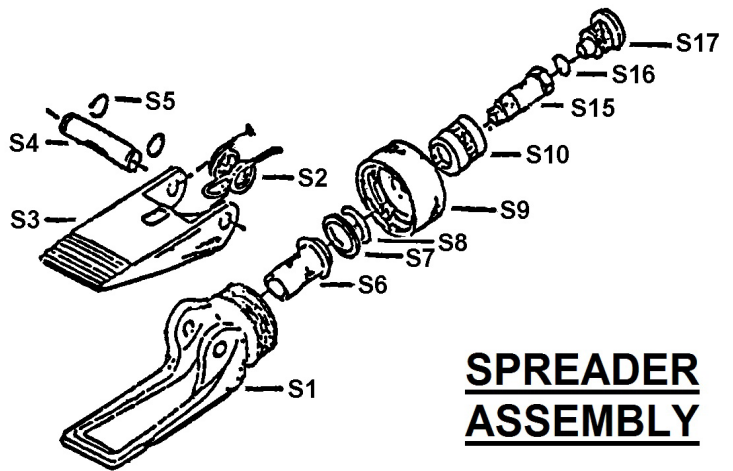


Parts Information:
**Hydraulic Body Repair Kit 10tonne
 SuperSnap® Type
 Model No: RE83/10.V2**



| Item | Part No. | Description |
|---------|------------|---------------------------------------|
| R01MA | 610.RJ01MA | Cylinder |
| R04B | 610.RJ04B | Ram |
| R05 | 610/RJ05 | Half Bush |
| R06 | 610/RJ06 | Bushing |
| R07B | 610.RJ07B | Cap (Ferrule) |
| R08B | 610.RJ08B | Y' Seal |
| R12B | 610.RJ12B | Snap Ring |
| R13 | 610/RJ13 | Spring Dia 19mm |
| R14 | 610/RJ14 | Screw Set (M6X30 & M6X20 Socket Head) |
| R15 | 610/RJ15 | Ring |
| R16"SS" | 610/RJ16 | Protecting Cap |
| R17N | 610.RJ17N | Protecting Cap |
| R18 | 610/RJ18 | Bushing |
| R19B | 610.RJ19B | Bearing |
| R20B | 610.RJ20B | Bearing |
| S10 | 610/SJ10 | Coupling Ring |
| S15A | 610.SJ15A | Clamping Bolt |
| S16 | 610/SJ16 | O-Ring, (Ex: 15.52 In: 9.76 Cs: 2.88) |
| S17 | 610/SJ17 | Dust Cap |

| Item | Part No. | Description |
|------|----------|---------------------------------------|
| S01 | 610/SJ01 | Lower Duck Bill |
| S02 | 610/SJ02 | Spring Dia 20.5mm |
| S03 | 610/SJ03 | Upper Duck Bill |
| S04 | 610/SJ04 | Pivoting Pin |
| S05 | 610/SJ05 | Ext Circlip 11.00mm Id |
| S06 | 610/SJ06 | Piston |
| S07 | 610/SJ07 | Cup Seal |
| S08 | 610/SJ08 | Rubber Washer M22 x M32 |
| S09 | 610/SJ09 | End Cap |
| S10 | 610/SJ10 | Coupling Ring |
| S15 | 610/SJ15 | Bolt M13x25 |
| S16 | 610/SJ16 | O-Ring, (Ex: 15.52 In: 9.76 Cs: 2.88) |
| S17 | 610/SJ17 | Dust Cap |



NOTE: It is our policy to continually improve products and as such we reserve the right to alter data, specifications and component parts without prior notice.

IMPORTANT: No liability is accepted for incorrect use of product.

WARRANTY: Guarantee is 12 months from purchase date, proof of which will be required for any claim.

Sealey Group, Kempson Way, Suffolk Business Park, Bury St Edmunds, Suffolk. IP32 7AR



01284 757500



01284 703534



sales@sealey.co.uk



www.sealey.co.uk