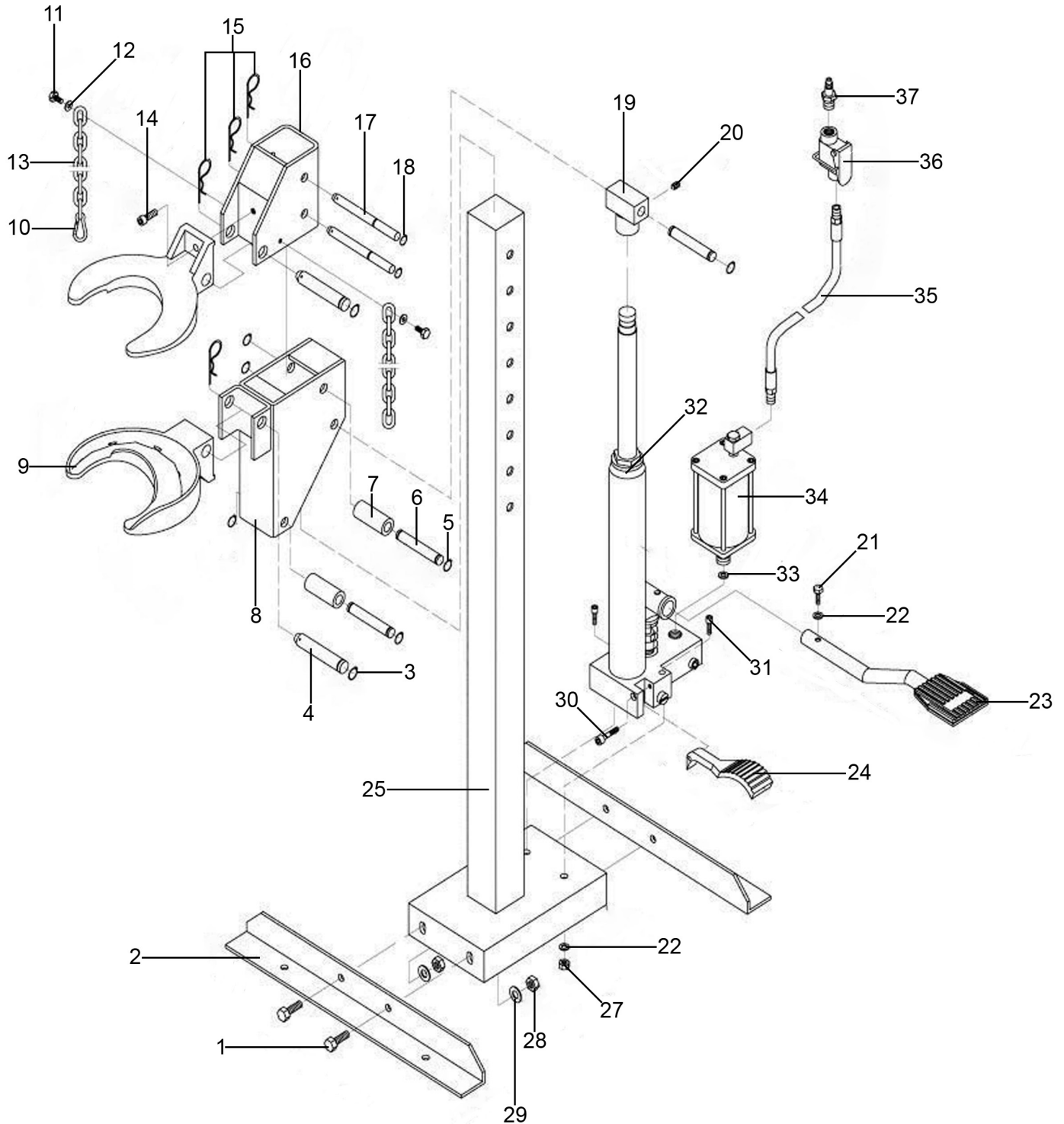


Parts Information:
**Coil Spring Compressing Station - Air/
 Hydraulic 1500kg Capacity
 Model No: RE232.V2**



NOTE: It is our policy to continually improve products and as such we reserve the right to alter data, specifications and component parts without prior notice. There may be alternative versions of this product, please contact us should you require this information.

IMPORTANT: No liability is accepted for incorrect use of product. Spare parts must be fitted by a competent person

WARRANTY: Guarantee is 12 months from purchase date, proof of which will be required for any claim.



Parts Information:
**Coil Spring Compressing Station - Air/
Hydraulic 1500kg Capacity
Model No: RE232.V2**

Item	Part No.	Description
1	SS1025.S	Hex Head Set Screw M10 x 25mm
2	RE231.02	Bracket
3	3015CXD.01	Circlip
4	RE231.04	Locating Pin 1
5	RE231.05	Circlip
6	RE231.06	Locating Pin 2
7	RE231.07	Bushing
8	RE231.08	Strut Support, Lower
9	RE231.09	Curved Coil Bracket
10	RE231.V3-13	Shackle
11	SS616.S	Hex Head Set Screw M6 x 16mm
12	FWM6.S	Flat Washer M6
13	RE231.V3-09	Chain
14	SCB820.SB	Socket Cap Bolt M8 x 20mm Black
15	RE231.15	R-Pin
16	RE231.16	Strut Support, Upper
17	RE231.17	Locating Pin 3
18	RE231.18	Circlip
19	RE232.19	Saddle
20	GSM810.S	Grub Screw M8 x 10mm

Item	Part No.	Description
21	RE232.21	Screw
22	FWM8.S	Flat Washer M8
23	RE232.23	Foot Pedal, Lift
24	RE232.24	Foot Pedal, Release
25	RE231.25	Upright
27	SN8.S	Steel Nut M8
28	SN10.S	Steel Nut M10
29	FWM10.S	Flat Washer M10
30	RE232.30	Pin
31	SCB1035.S	Socket Cap Bolt M10 x 35mm
32	RE232.32N	Ram
33	RW625.S	Repair Washer M6
34	YK509FAH.51A	Air Pump
35	RE232.35	Air Hose
36	RE232.36	Air Valve
37	RE232.37	Quick Coupler, Male Fitting
--	RE231.09A	Curved Coil Bracket, Small (Not Shown)
--	RE232.38	Plunger, Foot Pedal (Not Shown)
--	RE232.32/ASSY	Ram Assembly (Not Shown)

NOTE: It is our policy to continually improve products and as such we reserve the right to alter data, specifications and component parts without prior notice. There may be alternative versions of this product, please contact us should you require this information.

IMPORTANT: No liability is accepted for incorrect use of product. Spare parts must be fitted by a competent person

WARRANTY: Guarantee is 12 months from purchase date, proof of which will be required for any claim.

Sealey Group, Kempson Way, Suffolk Business Park, Bury St Edmunds, Suffolk. IP32 7AR



01284 757500



01284 703534



sales@sealey.co.uk



www.sealey.co.uk