



Instructions For:
**UNIVERSAL SHOCK ABSORBER
GLAND NUT SET**

Model No: **RE223**

Thank you for purchasing a Sealey product. Manufactured to a high standard this product will, if used according to these instructions and properly maintained, give you years of trouble free performance.



IMPORTANT

BEFORE USING THIS PRODUCT, PLEASE READ THE INSTRUCTIONS CAREFULLY. MAKE CAREFUL NOTE OF SAFETY INSTRUCTIONS, WARNINGS, AND CAUTIONS. THIS PRODUCT SHOULD ONLY BE USED FOR ITS INTENDED PURPOSE. FAILURE TO DO SO MAY CAUSE DAMAGE OR PERSONAL INJURY, AND WILL INVALIDATE THE WARRANTY.

(The use of symbols in this document is to attract your attention to possible danger, and reminders, the symbols and warnings themselves do not eliminate any danger, nor are they substitutes for proper accident prevention measures).

1. SPECIAL FEATURES & REQUIREMENTS

- ✓ The RE223 is designed for fast and simple removal of Macpherson strut insert retaining nuts (gland nuts).
- ✓ This kit comprises a system of three interface plates designed to fit Macpherson strut insert retaining nuts. One plate fits external hexagon nuts, one fits internal hexagon nuts and one is a composite plate. The composite plate can be assembled using a variety of tungsten carbide keys and a central driver which engages on the interface by means of two locating lugs.
- ✓ The RE223 is fully rated to be used with an air impact wrench (except for part numbers 2 through 4).
- ✓ Included in the set is a piston rod nut set (part numbers 2 through 4). This set is designed for use on the slotted piston rod nuts found on VW, Audi and Rover (UK only) vehicles.
- ✓ The RE223 kit should be used with the RE222, Professional Coil Spring Compressor, to replace strut inserts without removing the strut from the vehicle.
- ✓ Saves 15 minutes when used off the vehicle. When used with the RE222 on the vehicle, up to 1.5 hours can be saved.
- ✓ Requires one 24mm socket.
- ✓ The tool body, interface plates and nut set are all machined from solid steel. The interface keys are machined from tungsten carbide steel.

2. SAFETY INSTRUCTIONS

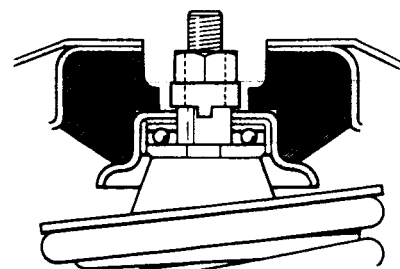
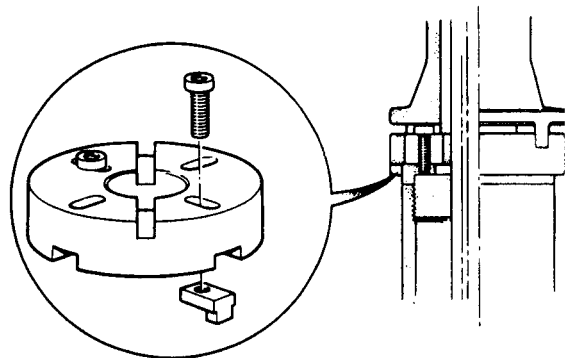
- DO use eye protection when working with the RE223.
- DO use the kit only for its intended purpose.
- DO check all items of the RE223 regularly for damaged parts. Do not use the kit if any of its components are broken, worn or damaged.
- DO use only original spare parts and accessories.
- DO keep children and unauthorised persons away from the working area.
- DO keep working area clean, tidy, and free from unrelated materials.
- DO remove ill fitting garments, ties. Tie back long hair and roll up sleeves.
- DO ensure the work area is well lit.
- DO ensure the floor is not slippery.
- DO ensure workpiece is correctly secured depending on likely hazards during operation.
- DO NOT use an air impact wrench with the adaptors (part numbers 2 through 4).
- DO NOT use the kit to perform a task for which it has not been designed.
- DO NOT use the set whilst under the influence of drugs, alcohol or other intoxicating medication.
- DO NOT allow children or untrained persons to operate the kit.

3. ASSEMBLY

The composite interface plate is readily assembled by sliding the correct keys (either round pin or flat) into the interface guides, aligning them with the holes or slots in the strut insert retaining nut and locking them in place with the 6 x 18 hex bolts provided.

4. OPERATING INSTRUCTIONS

- 4.1. The RE223 can be used on or off the vehicle. When used off the vehicle, the Macpherson strut should be held securely in a suitable strut vice.
- 4.2. Following the vehicle manufacturer's instructions, compress and remove the spring and its associated bearings and plates etc. This will expose the insert retaining nut.
- 4.3. Corroded and rusted nuts should be tapped with two hammers to help break any corrosion seal.
- 4.4. Select the correct interface plate and engage it on the insert retaining nut. It may be necessary to assemble a composite interface plate with the appropriate keys.
- 4.5. With the interface plate engaged securely on the retaining nut, depress the damper rod and engage the driver.
- 4.6. Using a 24mm socket and either hand tools or an air impact wrench on the drive, remove the insert retaining nut.
- 4.7. If the Macpherson strut is still fitted to the vehicle, access for the driver is gained through the hole in the vehicle's inner wing or over/ through the spring.
- 4.8. Remove the tool and retaining nut and the strut insert can then be withdrawn.
- 4.9. Use appropriate damper rod lifter to remove the insert.
- 4.10. Assembly of the strut is carried out in reverse of the above procedure. The insert retaining nut should be tightened in accordance with the vehicle manufacturer's specification.



17 - RE223 - 061197



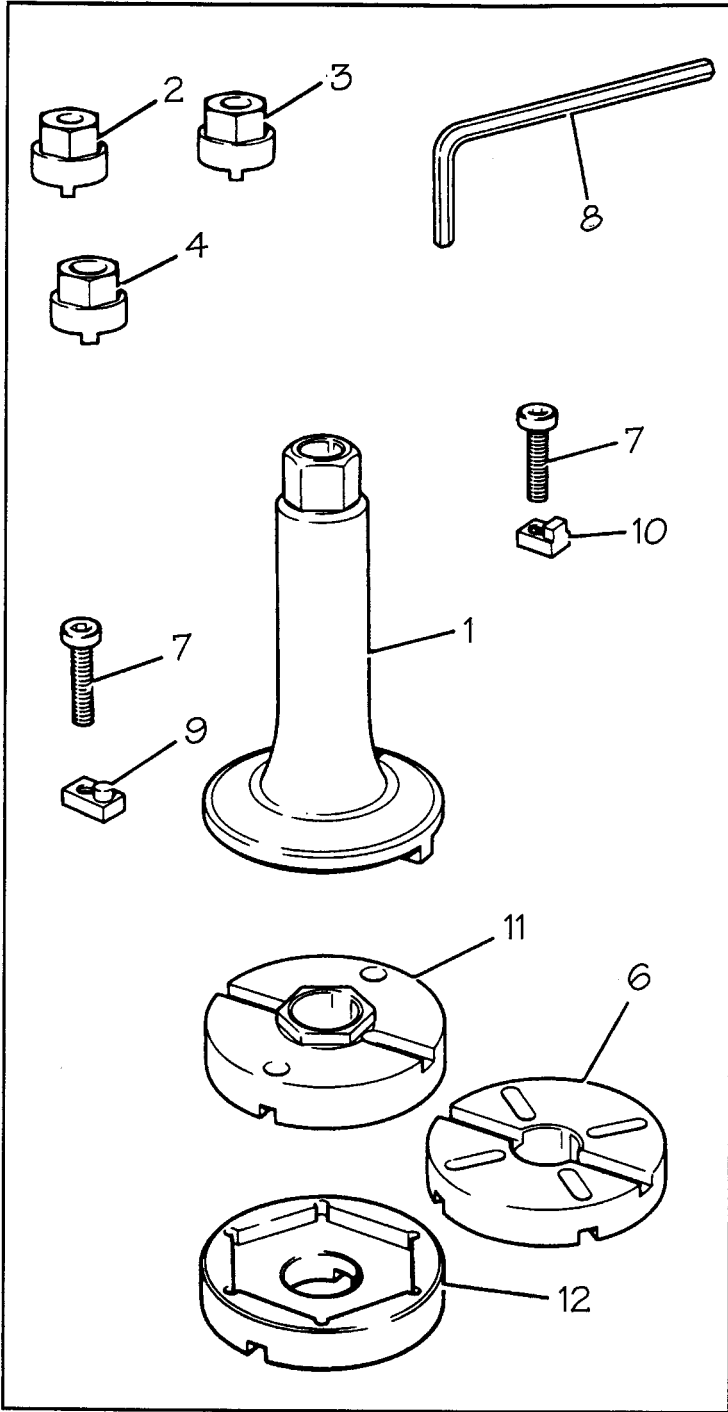
01284 757500



01284 703534

E-mail: sales@sealey.co.uk

4. DIAGRAM AND PARTS LIST



| ITEM | PART No. | DESCRIPTION |
|------|---------------|-------------------------------|
| 1 | 369/0050-0010 | Driver |
| 2 | 369/0050-0070 | Adaptor, VW/Golf rear |
| 3 | 369/0050-0012 | Adaptor Polo/Autdi 80 12.5 mm |
| 4 | 369/0050-0013 | Adaptor New Golf/Audi 80 |
| 6 | 369/0050-0021 | Plate 90° |
| 7 | 369/0050-0022 | Hex Bolt |
| 8 | AK93-4 | Hex Key, 4mm |
| 9 | 369/0050-0025 | Round Key |
| 10 | 369/0050-0027 | Square Key |
| 11 | 369/0050-0035 | Plate VW/Audi |
| 12 | 369/0050-0060 | Plate GM/Japan |
| 13 | 369/0050-0090 | Storage Case (not shown) |

Original Date: 01/11/97
 Issue Date: 17/11/97
 Version No: 0
 Date Modified: N/A

IMPORTANT

NO RESPONSIBILITY IS ACCEPTED FOR INCORRECT USE OF THIS EQUIPMENT.

WARRANTY

GUARANTEE IS 12 MONTHS FROM PURCHASE DATE. PROOF OF PURCHASE WILL BE REQUIRED FOR ANY CLAIM.

INFORMATION

PLEASE CALL US FOR A COPY OF OUR LATEST CATALOGUE.



Sealey Group
 Bury St, Edmunds,
 Suffolk.

RE223 - 17 - 061197



01284 757500



01284 703534

E-mail: sales@sealey.co.uk