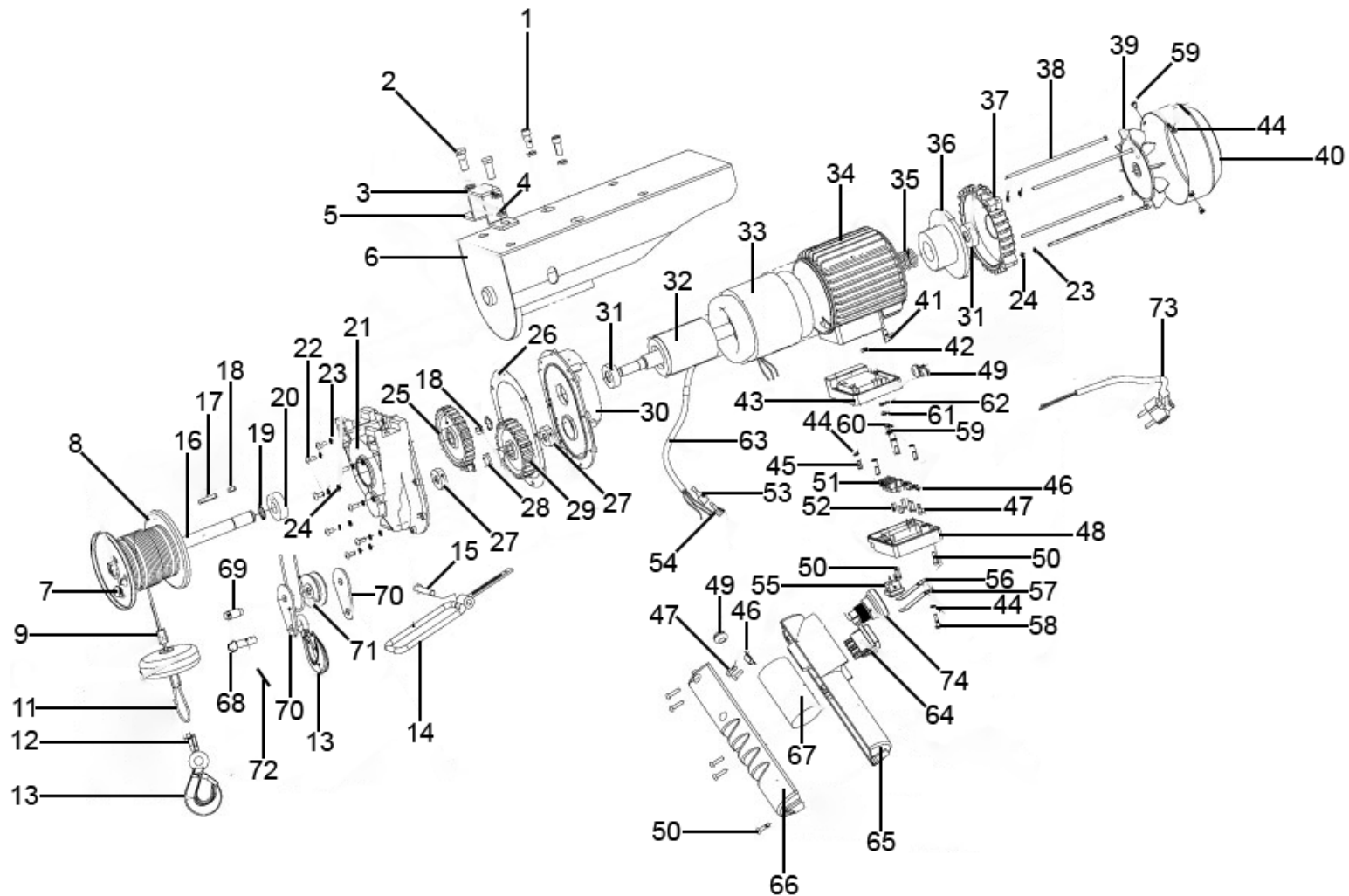




Parts Information:  
**Power Hoist 230V/1ph 400kg Capacity**  
**Model No: PH400.V2**



**NOTE:** It is our policy to continually improve products and as such we reserve the right to alter data, specifications and component parts without prior notice.

There may be alternative versions of this product, please contact us should you require this information.

**IMPORTANT:** No liability is accepted for incorrect use of product. Spare parts must be fitted by a competent person

**WARRANTY:** Guarantee is 12 months from purchase date, proof of which will be required for any claim.

Sealey Group, Kempson Way, Suffolk Business Park, Bury St Edmunds, Suffolk. IP32 7AR



01284 757500



01284 703534



sales@sealey.co.uk



www.sealey.co.uk



Parts Information:  
Power Hoist 230V/1ph 400kg Capacity  
Model No: PH400.V2

Item	Part No.	Description
1	PH400.01	Screw
2	SS820.S	Hex Head Set Screw M8 x 20mm
3	PH400.03	Spring Washer
4	PH400.04	Washer
5	PH400.05	Fixing Hook
6	PH400.06	Housing
7	PH400.07	Ratchet
8	PH400.08	Drum
9	PH400.09	Clip, Fixed
11	PH400.11	Wire Rope
12	PH400.12	Protector
13	PH400.13	Hook
14	PH400.14	Lever
15	PH400.15	Socket Cap Screw M6 x 40mm
16	PH400.16	Shaft
17	PH400.17	Key
18	PH400.18	Key
19	PH400.19	Retaining Ring
20	B/6203ZZ	Bearing
21	PH400.21	Gear Box
22	PH400.22	Screw
23	PH400.23	Spring Washer
24	PH400.24	Washer
25	PH400.25	Gear
26	PH400.26	Gasket
27	B/6200-2RS	Bearing
28	PH400.28	Shaft Pinion
29	PH400.29	Gear
30	PH400.30	Cover, Gear Box
31	B/6202ZZ	Bearing
32	PH400.32	Rotor
33	PH400.33	Stator
34	PH400.34	Housing, Motor
35	PH400.35	Spring, Shaft
36	PH400.36	Magnetic Disc
37	PH400.37	Cover, Motor
38	PH400.38	Bolt M5 x 170mm

Item	Part No.	Description
39	PH400.39	Fan
40	PH400.40	Fan Cover
41	PH400.41	Screw
42	SN4.S	Steel Nut M4
43	PH400.43	Housing, Connecting Base
44	PH400.44	Washer
45	PH400.45	Screw
46	PH400.46	Press Plate
47	PH400.47	Screw
48	PH400.48	Connecting Cover, Lower
49	PH400.49	Protecting Ring
50	PH400.50	Screw
51	PH400.51	Connecting Seat
52	PH400.52	Screw
53	PH400.53	Terminal Sleeve
54	PH400.54	Terminal
55	PH400.55	Safety Micro Switch
56	PH400.56	Shift Lever, A
57	PH400.57	Shift Lever, B
58	PH400.58	Screw
59	PH400.59	Screw
60	PH400.60	Spring Washer
61	PH400.61	Screw
62	PH400.62	Washer
63	PH400.63	Cable
64	PH250.V3-67	Switch, Rocker
65	PH250.V3-69	Housing, Switch
66	PH250.V3-68	Cover, Housing
67	SH00300204	Capacitor
68	PH400.68	Pin
69	PH400.69	Pin
70	PH400.70	Cover, Pulley
71	PH400.71	Pulley
72	PH400.72	Spring Pin
73	PH400.V2-73	Power Cord
74	PH400.V2-74	Emergency Switch
--	PH400.11A	Wire Rope Assembly (Not Shown)

**NOTE:** It is our policy to continually improve products and as such we reserve the right to alter data, specifications and component parts without prior notice. There may be alternative versions of this product, please contact us should you require this information.

**IMPORTANT:** No liability is accepted for incorrect use of product. Spare parts must be fitted by a competent person

**WARRANTY:** Guarantee is 12 months from purchase date, proof of which will be required for any claim.

Sealey Group, Kempson Way, Suffolk Business Park, Bury St Edmunds, Suffolk. IP32 7AR



01284 757500



01284 703534



sales@sealey.co.uk



www.sealey.co.uk