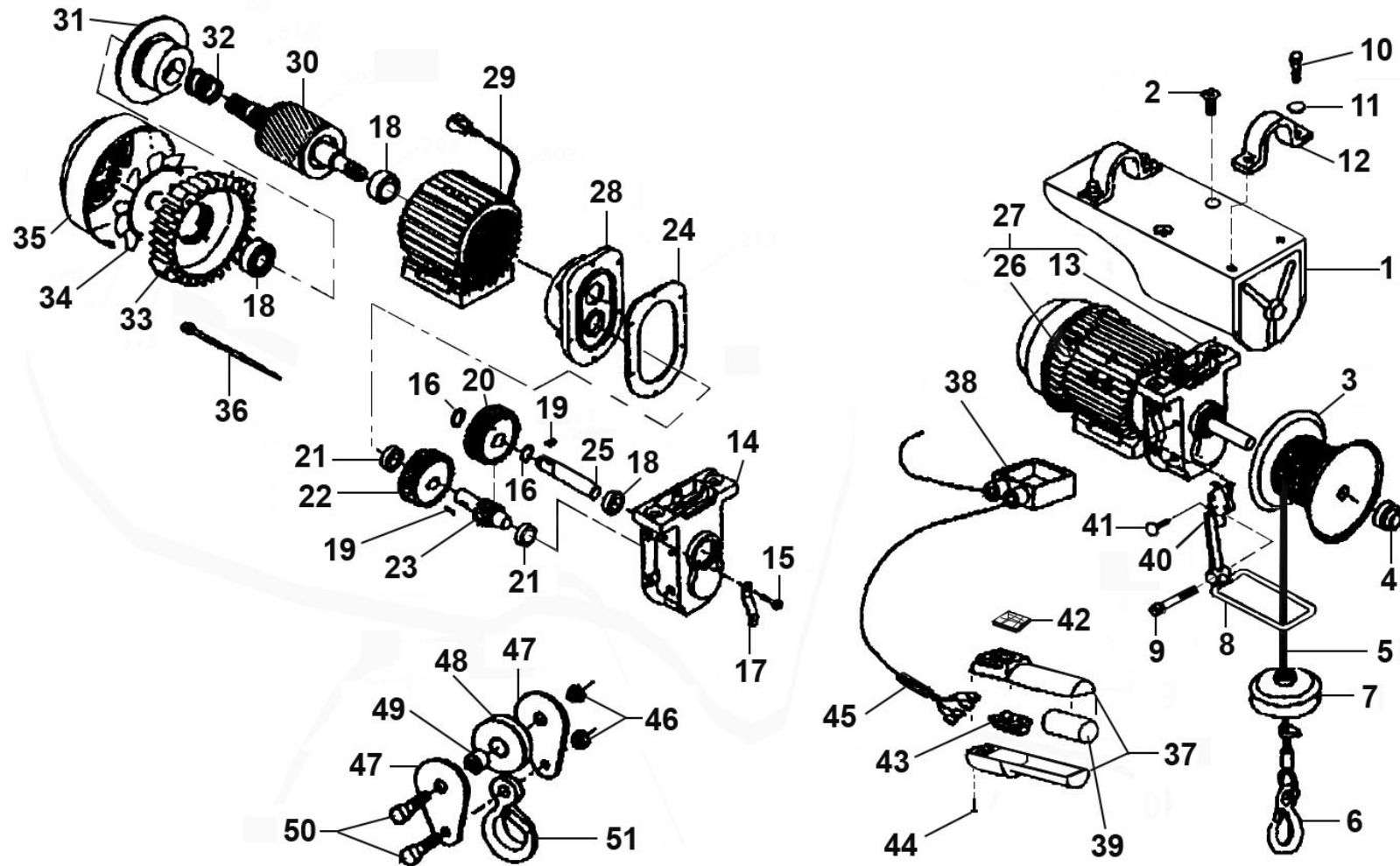




Parts Information:
Power Hoist 230V/1ph 250kg Capacity
Model No: PH250



NOTE: It is our policy to continually improve products and as such we reserve the right to alter data, specifications and component parts without prior notice.

There may be alternative versions of this product, please contact us should you require this information.

IMPORTANT: No liability is accepted for incorrect use of product. Spare parts must be fitted by a competent person

WARRANTY: Guarantee is 12 months from purchase date, proof of which will be required for any claim.

Sealey Group, Kempson Way, Suffolk Business Park, Bury St Edmunds, Suffolk. IP32 7AR



01284 757500



01284 703534



sales@sealey.co.uk



www.sealey.co.uk



Parts Information:
Power Hoist 230V/1ph 250kg Capacity
Model No: PH250

Item	Part No.	Description
1	374/PH250-100	Cover, Complete
2	PH250.V2/04	Hsfhc Screw 10.9 8x20
3	374/PH250-102	Drum
4	374/PH250-103	Nylon Bush
5	PH250.V4-10	Wire Rope Ass'y
6	PH250.V2/29	Safety Hook Cap 0.25 Tonne
7	PH250.V2/26	Counterweight d 58x43
8	PH250.V2/40	Max Height Adjustment Bracket
9	PH250.V2/41	Bracket Fastening Screw
10	PH250.V2/03	Hh 4.8 Screw And Washer
11	374/PH250-112	Washer
12	PH250.V2/02	U-Shaped Supporting Bracket
13	374/PH250-200	Reducer
14	374/PH250-201	Box, Reducer
15	374/PH250-202	Screw
16	374/PH250-203	O-Ring
17	374/PH250-204	Bar, Spring Return
18	B/6202ZZ	Bearing 6202zz
19	374/PH250-208	Key, Woodruff
20	374/PH250-209	Wheel, Gear
21	B/6200Z	Bearing 6200z
22	374/PH250-211	Wheel, Gear
23	374/PH250-212	Gearshaft
24	374/PH250-213	Gasket
25	374/PH250-214	Shaft
26	374/PH250-300	Motor

Item	Part No.	Description
27	374/PH250-301	Stator
28	374/PH250-302	Cover, reducer
29	374/PH250-303	Stator, complete
30	374/PH250-305	Rotor, Complete
31	374/PH250-306	Flange
32	374/PH250-310	Spring
33	374/PH250-313	Cover, Motor
34	374/PH250-317	Fan
35	PH250.V2/05	Self Braking Motor
36	374/PH250-321	Rod, Connecting
37	PH250.V2/64-7	Control Unit Complete
38	374/PH250-401	Terminal Box
39	PH250.V2/51	Capacitor
40	374/PH250-403	Switch
41	374/PH250-404	Screw
42	186.80037BEX	Cap/Frame
43	PH250.V3-67	Switch 10a
44	374/PH250-411	Screw
45	374/PH250-412	Grip, Cable
46	SN8.S	Steel Nut M8 Zinc
47	PH250.V2/35	Rh Or Lh Pulley Bracket
48	374/PH250-505	Pulley
49	PH250.V2/38	Brass Coated Bushing
50	PH250.V2/39	Hh 8.8 screw 8x20
51	374/PH250-508	Hook

NOTE: It is our policy to continually improve products and as such we reserve the right to alter data, specifications and component parts without prior notice. There may be alternative versions of this product, please contact us should you require this information.

IMPORTANT: No liability is accepted for incorrect use of product. Spare parts must be fitted by a competent person

WARRANTY: Guarantee is 12 months from purchase date, proof of which will be required for any claim.

Sealey Group, Kempson Way, Suffolk Business Park, Bury St Edmunds, Suffolk. IP32 7AR



01284 757500



01284 703534



sales@sealey.co.uk



www.sealey.co.uk