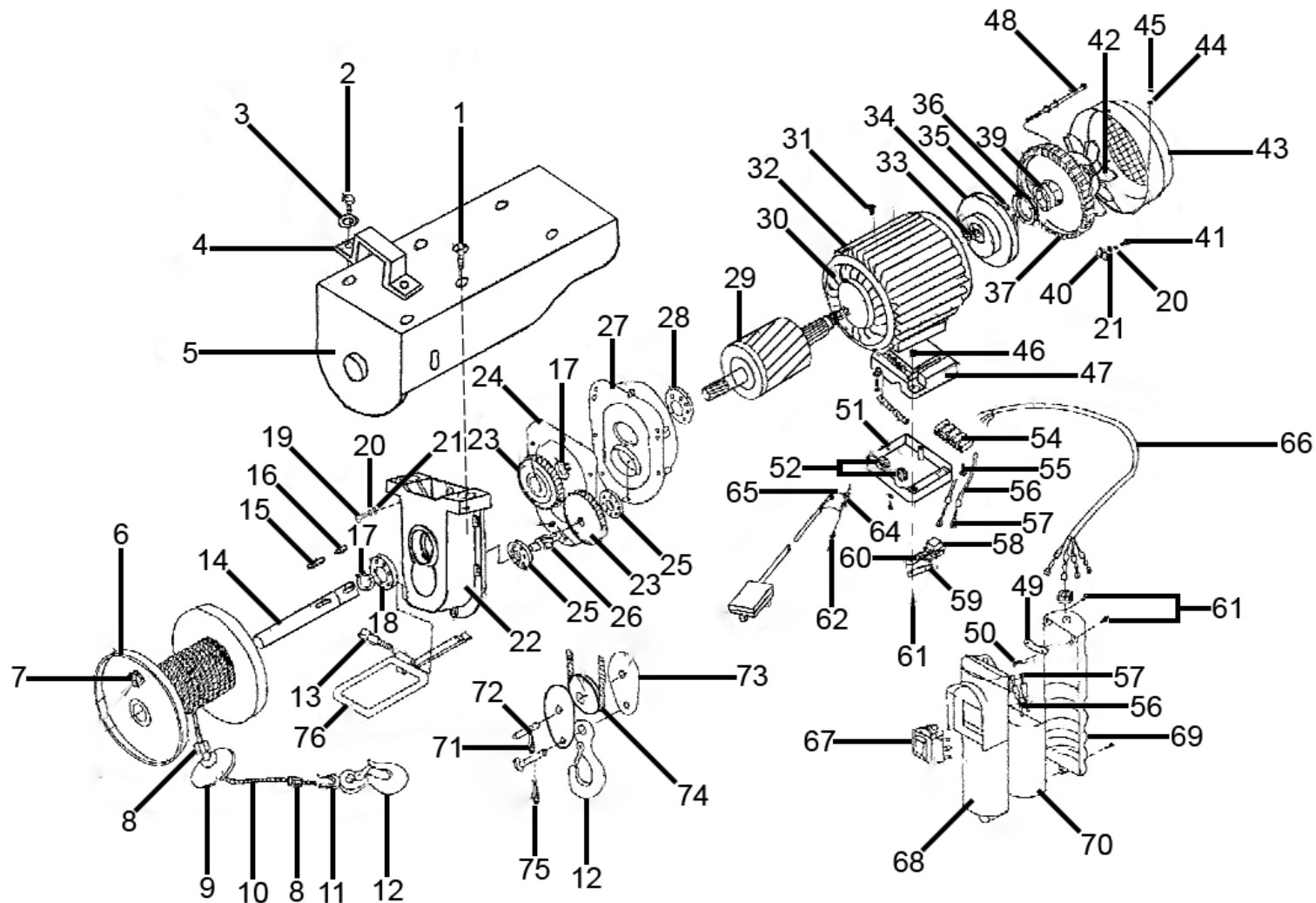




Parts Information:
Power Hoist 230V/1ph 250kg Capacity
Model No: PH250.V3



NOTE: It is our policy to continually improve products and as such we reserve the right to alter data, specifications and component parts without prior notice.

There may be alternative versions of this product, please contact us should you require this information.

IMPORTANT: No liability is accepted for incorrect use of product. Spare parts must be fitted by a competent person

WARRANTY: Guarantee is 12 months from purchase date, proof of which will be required for any claim.

Sealey Group, Kempson Way, Suffolk Business Park, Bury St Edmunds, Suffolk. IP32 7AR



01284 757500



01284 703534



sales@sealey.co.uk



www.sealey.co.uk



Parts Information:
Power Hoist 230V/1ph 250kg Capacity
Model No: PH250.V3

Item	Part No.	Description
1	PH250.V3-01	Screw M8 x 20mm
2	SS820.S	Hex Head Set Screw M8 x 20mm
3	FWM8.S	Flat Washer M8
4	PH250.V3-04	Fix Hook
5	PH250.V3-05	Housing
6	PH250.V3-06	Drum
7	PH250.V3-07	Ratchet
8	PH400.09	Fixed Clip
9	PH250.V3-09	Weight
10	PH250.V4-10	Wire Rope Assembly
11	PH400.12	Protector
12	PH400.13	Hook
13	PH400.15	Socket Cap Screw M6 x 40mm
14	PH250.V3-14	Shaft
15	PH250.V3-15	Key 5 x 25
16	PH250.V3-16	Key 5 x 8
17	PH250.V3-17	Retaining Ring
18	B/6203	Bearing
19	PH250.V3-19	Screw M5 x 12mm
20	PH250.V3-20	Spring
21	PH250.V3-21	Washer
22	PH250.V3-22	Gear Box
23	PH250.V3-23	Gear
24	PH250.V3-24	Gasket
25	B/6200-2RS	Bearing
26	PH250.V3-26	Pinion, Shaft
27	PH250.V3-27	Cover, Box
28	B/6202	Bearing
29	PH250.V3-29	Rotor
30	PH250.V3-30	Stator
31	PH250.V3-31	Screw M6 x 10mm
32	PH250.V3-32	Motor Housing
33	PH250.V3-33	Spring, Shaft
34	PH250.V3-34	Magnetic Disc
35	PH250.V3-35	Retaining Ring
36	PH250.V3-36	Sleeve
37	PH250.V3-37	Cover, Motor
39	SN14.S	Steel Nut M14
40	PH250.V3-40	Fix Plate

Item	Part No.	Description
41	PH250.V3-41	Screw
42	PH250.V3-42	Fan
43	PH250.V3-43	Cover, Fan
44	PH250.V3-44	Washer
45	PH250.V3-45	Screw M4 x 6mm
46	PH250.V3-46	Nut
47	PH250.V3-47	Housing, Connection
48	PH250.V3-48	Screw M4 x 12mm
49	PH250.V3-49	Wire Clip
50	PH250.V3-50	Screw
51	PH250.V3-51	Cover, Top
52	PH250.V3-52	Protecting Ring
54	PH250.V3-54	Connecting Seat
55	PH250.V3-55	Screw M3 x 12mm
56	PH250.V3-56	Cable Sleeve
57	PH250.V3-57	Terminal
58	PH400.55	Micro Switch
59	PH250.V3-59	Shift Lever 1
60	PH250.V3-60	Shift Lever 2
61	MSP422.S	Machine Screw Pan Head Phillips M4 x 22mm
62	PH250.V3-62	Screw M4 x 8mm
64	PH250.V3-64	Terminal
65	PH250.V3-65	Star Washer
66	PH250.V3-66	Power Cord
67	PH250.V3-67	Switch, Power Rocker
68	PH250.V3-68	Cover, Housing
69	PH250.V3-69	Housing, Switch
70	PH250.V3-70	Condensor
71	PH250.V3-71	Pin
72	PH250.V3-72	Shaft
73	PH250.V3-73	Cover, Pulley
74	PH250.V3-74	Pulley
75	PH250.V3-75	Pin
76	PH250.V3-76	Bracket, Height Adjustment
--	PH250.V3-38	Fasten Bolt M5 x 140mm (Not Shown)
--	PH250.V3-53	Screw (Not Shown)
--	PH250.V3-63	Spring Washer (Not Shown)
--	440-6878	Switch, Rocker (Not Shown)
--	PH250.V3-78	Emergency Switch Assembly (Not Shown)

NOTE: It is our policy to continually improve products and as such we reserve the right to alter data, specifications and component parts without prior notice. There may be alternative versions of this product, please contact us should you require this information.

IMPORTANT: No liability is accepted for incorrect use of product. Spare parts must be fitted by a competent person

WARRANTY: Guarantee is 12 months from purchase date, proof of which will be required for any claim.

Sealey Group, Kempson Way, Suffolk Business Park, Bury St Edmunds, Suffolk. IP32 7AR



01284 757500



01284 703534



sales@sealey.co.uk



www.sealey.co.uk