

fig.1

Item	Part No.	Description
1	GSM610.S	Grub Screw M6 x 10mm
2	PDM155B-1-02	Collar Rack
3	PDM260F-1-18	Gear Helical
4	PDM170F-1-04	Crank
6	PDM240F-1-06	Table
7	PDM240F-1-07	Clamp, Table
8	PDM170F-1-08	Hex Screw M16 x 20-35mm
9	PDM240F-1-09	Arm, Table
10	PDM155B-1-10	Base

Item	Part No.	Description
11	PDM240F-1-11	Support, Column
12	SS1040.S	Hex Head Set Screw M10 x 40mm
13	GSM1012.S	Grub Screw M10 x 12mm
14	PDM155B-1-14	Column
15	PDM240F-1-15	Rack
17	PDM155B-1-17	Support, Table (w/Scale)
18	PDM155B-1-18	Worm Elevation
19	PDM260F-1-16	Pin, Gear

NOTE: It is our policy to continually improve products and as such we reserve the right to alter data, specifications and component parts without prior notice. There may be alternative versions of this product, please contact us should you require this information.

IMPORTANT: No liability is accepted for incorrect use of product. Spare parts must be fitted by a competent person

WARRANTY: Guarantee is 12 months from purchase date, proof of which will be required for any claim.

Parts Information:
**Pillar Drill Floor 16-Speed 1635mm Height
 230V
 Model No: PDM240F**

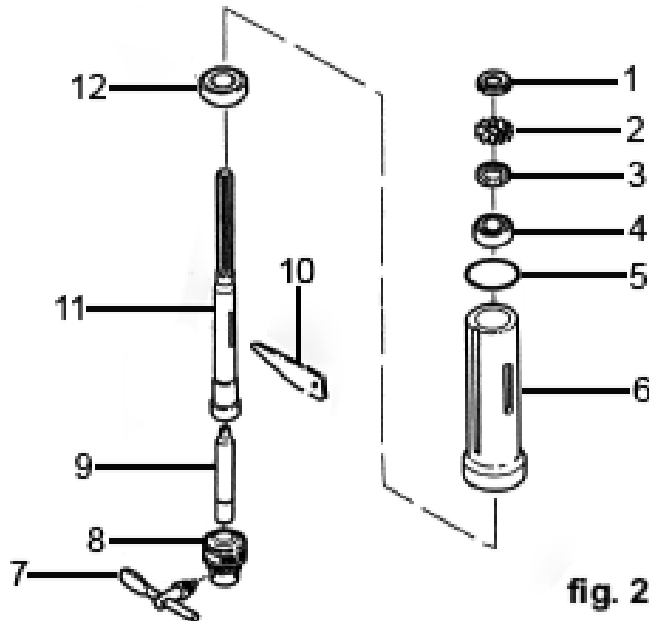


fig. 2

Item	Part No.	Description
1	PDM240F-2-01	Lock Nut
2	PDM240F-2-02	Locking Ring
3	PDM240F-2-03	Seal Washer, Metal
4	B/6203ZZ	Bearing
5	PDM240F-2-05	O-Ring
6	PDM240F-2-06	Tube Quill

Item	Part No.	Description
7	PDM260F-2-08	Chuck Key
8	PDM260F-2-09	Chuck (c/w Key)
9	PDM240F-2-09	Arbor
10	PDM170F-2-10	Key Drift
11	PDM240F-2-11	Spindle
12	B/6206ZZ	Bearing

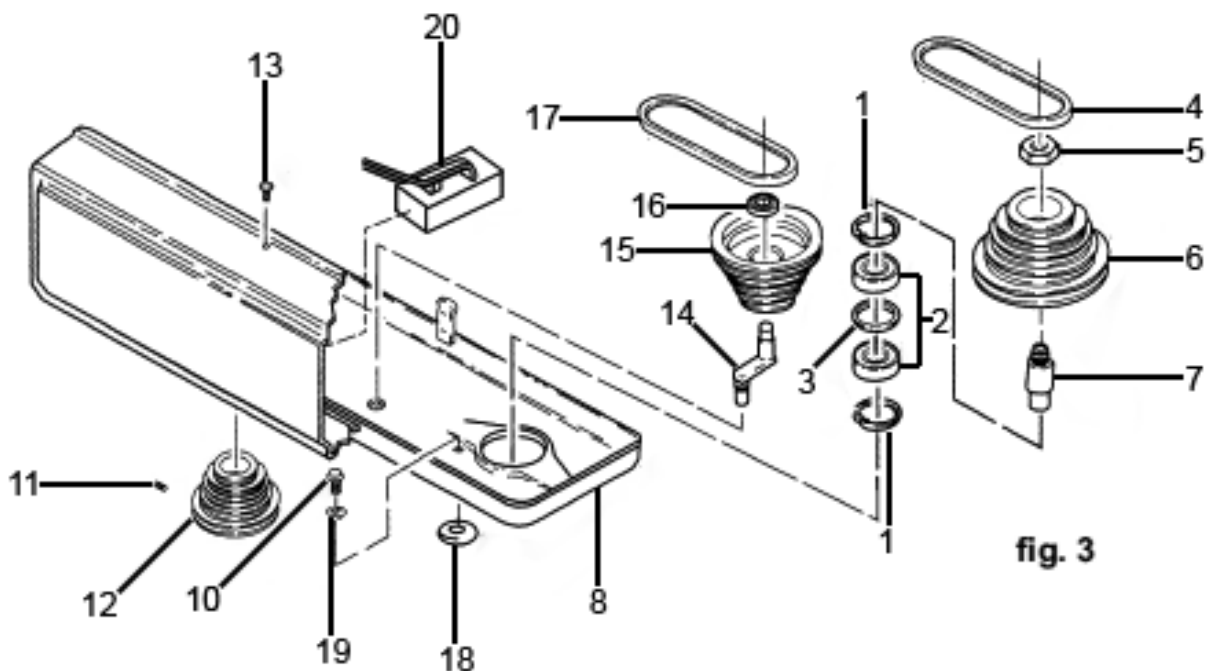


fig. 3

NOTE: It is our policy to continually improve products and as such we reserve the right to alter data, specifications and component parts without prior notice. There may be alternative versions of this product, please contact us should you require this information.

IMPORTANT: No liability is accepted for incorrect use of product. Spare parts must be fitted by a competent person

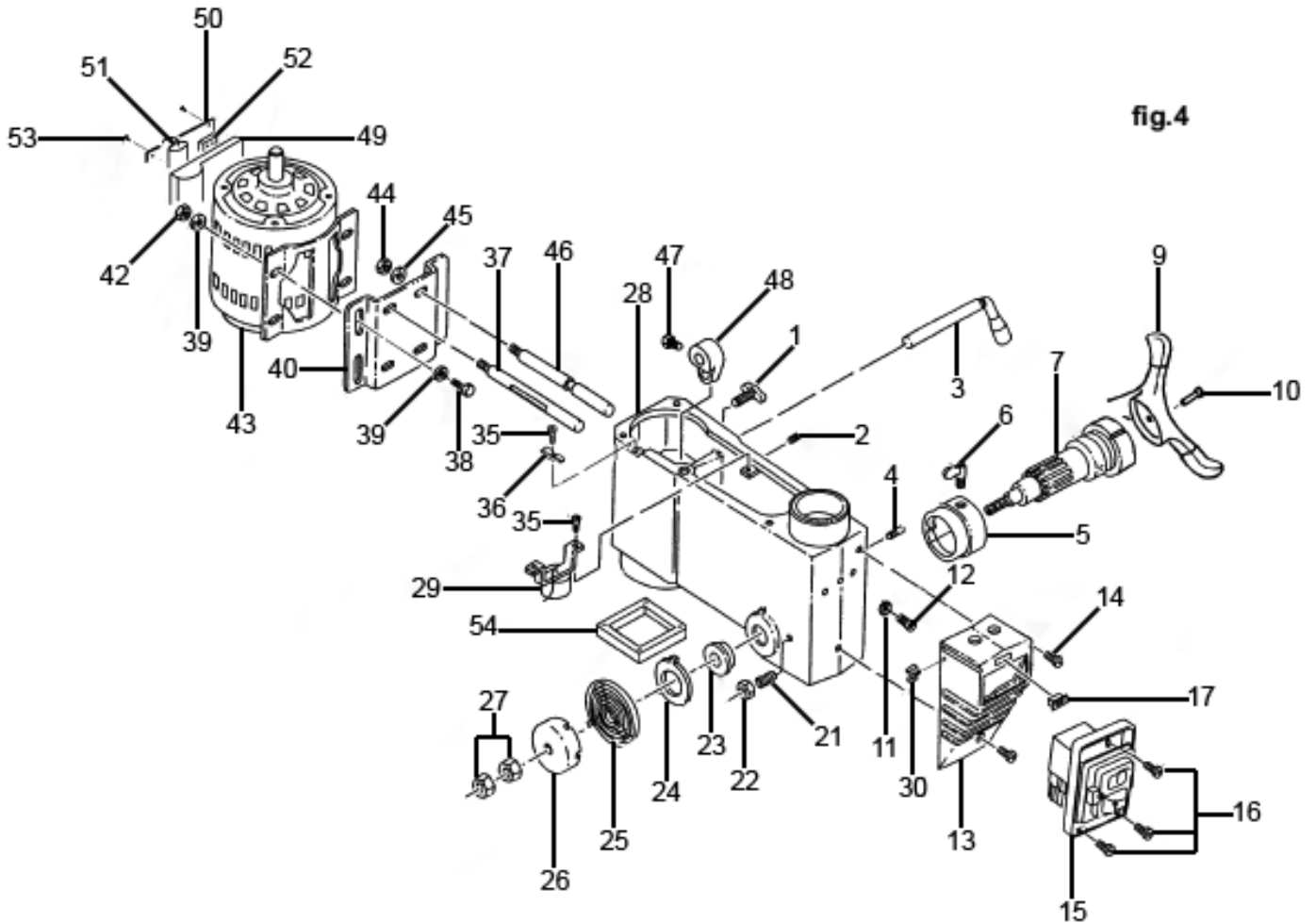
WARRANTY: Guarantee is 12 months from purchase date, proof of which will be required for any claim.



Parts Information:
**Pillar Drill Floor 16-Speed 1635mm Height
 230V**
Model No: PDM240F

Item	Part No.	Description
1	PDM240F-3-01	Retaining Ring
2	B/6205ZZ	Bearing
3	PDM240F-3-03	Spacer, Bearing
4	PDM240F-3-04	V-Belt
5	PDM240F-3-05	Nut, Pulley
6	PDM240F-3-06	Spindle, Pulley
7	PDM240F-3-07	Insert, Pulley
8	PDM240F-3-08	Guard, Pulley
10	PDM260F-3-10	Screw Rd Hd Washer M6 x 1.0-16mm
11	GSM815.S	Grub Screw M8 x 15mm

Item	Part No.	Description
12	PDM240F-3-11N	Pulley, Motor
13	MSP512.SB	Machine Screw Pan Head Phillips M5 x 12mm Black
14	PDM240F-3-14	Idler Pivot
15	PDM240F-3-15	Pulley, Centre
16	B/6202ZZ	Bearing
17	PDM240F-3-17	V-Belt
18	PDM155B-3-18	Washer, Foam
19	PDM240F-3-19	Lock Washer M16
20	PDM.MS	Micro Switch
--	PDM240F-3-11	Pulley, Motor (Not Shown)



NOTE: It is our policy to continually improve products and as such we reserve the right to alter data, specifications and component parts without prior notice. There may be alternative versions of this product, please contact us should you require this information.

IMPORTANT: No liability is accepted for incorrect use of product. Spare parts must be fitted by a competent person

WARRANTY: Guarantee is 12 months from purchase date, proof of which will be required for any claim.

Sealey Group, Kempson Way, Suffolk Business Park, Bury St Edmunds, Suffolk. IP32 7AR



01284 757500



01284 703534



sales@sealey.co.uk



www.sealey.co.uk



Parts Information:
**Pillar Drill Floor 16-Speed 1635mm Height
230V
Model No: PDM240F**

Item	Part No.	Description
1	PDM170F-4-01	Adjustment Knob, Motor
2	GSM1012.S	Grub Screw M10 x 12mm
3	PDM170F-4-03	Handle, Belt Tension
4	PDM240F-4-04	Pin-Stop
5	PDM260F-4-21	Depth Stop Ring
6	PDM155B-4-06	Screw, Lock Depth
7	PDM240F-4-07	Hub
9	PDM155B-4-09	Handle
10	SCB820.SB	Socket Cap Bolt M8 x 20mm Black
11	PDM170F-4-11	Lock Washer M5
12	MSP58.SB	Machine Screw Pan Head Phillips M5 x 8mm Black
13	PDM240F-4-13	Housing, Power Switch
14	MSP516.SB	Pan Head Machine Screw M5 x 16mm Black
15	PDM170F-4-15	Switch, Power (c/w Cover)
16	PDM240F-4-16	Rd Head S/T Screw M4 x 10mm Black
17	PDM155B-4-17	Light Switch, Power Rocker
21	PDM240F-4-21	Set Screw, Special 10 x 1.5-27mm
22	PDM240F-4-22	Half Nut, Black M10
23	PDM170F-4-23	Seat, Spring
24	PDM170F-4-24	Retainer, Spring
25	PDM170F-4-25	Torsion Spring
26	PDM170F-4-26	Cap, Spring
27	SN10.SB	Steel Nut M10 Black
28	PDM240F-4-28	Head

Item	Part No.	Description
29	PDM260F-4-48	Socket, Bulb
30	PDM240F-4-30	Clip, Chuck Key
35	PDM170F-4-35	Screw
36	PDM155B-4-36	Clamp, Cord
37	PDM240F-4-37	Bracket, Motor Support (A)
38	SS825.SB	Hex Head Set Screw M8 x 25mm Black
39	PDM155B-4-39	Washer
40	PDM240F-4-40N	Mount, Motor
42	SN8.SB	Steel Nut M8 Black
43	PDM240F-4-43N	Motor
44	PDM170F-4-44	Hex Nut M12 x 1.75mm
45	PDM170F-4-45	Lock Washer 1/2"
46	PDM240F-4-46	Bracket, Motor Support (B)
47	PDM170F-4-47	Screw, Hex Hd M8 x 1.25-16mm
48	PDM260F-4-02	Lever, Adjusting
49	PDM155B-4-49	Terminal Box
50	PDM155B-4-50	Cover, Terminal Box
51	PDM240F-4-51	Capacitor
52	PDM155B-4-52	Terminal Block
53	MSP410.SB	Machine Screw Pan Head Phillips M4 x 10mm Black
54	PDM240F-4-29C	Cover, Light
--	PDM170F-4-40	Mount, Motor (Not Shown)
--	PDM240F-4-43	Motor (Not Shown)
--	DPG230	Drill Press Guard (Not Shown)

NOTE: It is our policy to continually improve products and as such we reserve the right to alter data, specifications and component parts without prior notice. There may be alternative versions of this product, please contact us should you require this information.

IMPORTANT: No liability is accepted for incorrect use of product. Spare parts must be fitted by a competent person

WARRANTY: Guarantee is 12 months from purchase date, proof of which will be required for any claim.

Sealey Group, Kempson Way, Suffolk Business Park, Bury St Edmunds, Suffolk. IP32 7AR



01284 757500



01284 703534



sales@sealey.co.uk



www.sealey.co.uk