

NOTE: It is our policy to continually improve products and as such we reserve the right to alter data, specifications and component parts without prior notice. There may be alternative versions of this product, please contact us should you require this information.

IMPORTANT: No liability is accepted for incorrect use of product. Spare parts must be fitted by a competent person

WARRANTY: Guarantee is 12 months from purchase date, proof of which will be required for any claim.



Parts Information:
**Vacuum Cleaner Industrial Wet & Dry 77L
Stainless Steel Drum with Swivel Emptying
2400WV
Model No: PC477**

| Item | Part No. | Description |
|------|-------------|-----------------------------------|
| 1 | PC477.01 | Trolley Ass'y |
| 2 | PC477.02 | Tank Ass'y |
| 3 | PC477.04-1 | RD Head S/t Screw M5X15 Black |
| 4 | PC477.04-2 | RD Head S/t Screw M4.8 X 20 Black |
| 5 | PC477.04-3 | RD Head S/t Screw M5X63 Black |
| 6 | PC477.04-4 | Handle |
| 7 | PC477.04-5 | Screw |
| 8 | PC477.04-6 | Top Housing |
| 9 | PC477.04-7 | Blocker |
| 10 | PC477.04-8 | Upper Blocker |
| 11 | PC477.04-9 | Blanking Cap |
| 12 | PC477.04-10 | RD Head S/t Screw M5X30 Black |
| 13 | PC477.04-11 | Middle Cover |
| 14 | PC477.04-12 | Gasket |
| 16 | PC477.03-22 | Motor 1200W |
| 17 | PC477.04-15 | Foam Gasket |
| 18 | PC477.04-16 | Gasket |
| 19 | PC477.04-17 | Foam Filter |
| 20 | PC477.04-18 | Blanking Plate |
| 21 | PC477.04-19 | Base |
| 22 | PC477.04-20 | Motor Base |
| 23 | PC477.04-21 | Gasket |
| 24 | PC477.04-22 | Gasket |
| 25 | PC477.04-23 | Bottom Base |
| 26 | PC477.04-25 | Float |
| 27 | PC477.04-26 | Float Frame |
| 28 | PC477.04-27 | Spring |
| 29 | PC477.04-29 | Hook |
| 30 | PC477.04-30 | Plate |
| 31 | PC477.04-31 | Plate |
| 32 | PC477.04-32 | Screw (M3x8) |
| 33 | PC477.04-33 | Wire |

| Item | Part No. | Description |
|------|-------------|------------------------------------|
| 34 | PC477.05-11 | Wire |
| 35 | PC477.05-12 | Wire |
| 36 | PC477.05-13 | Capacitor (0.1uf) |
| 37 | PC477.05-2 | Cord Holder |
| 38 | PC477.05-4 | Screw |
| 39 | PC477.05-5 | Terminal Block |
| 40 | PC477.05-6 | Wire |
| 41 | PC477.05-7 | Wire |
| 42 | PC477.05-8 | Transparent Cover |
| 43 | PC477.05-9 | Transparent Cover Frame |
| 44 | PC455.03-27 | Plate |
| 45 | PC455.03-44 | Screw (M4x16) |
| 46 | PC455.03-48 | Switch |
| 47 | PC477.03-1 | Frame Holder |
| 48 | PC477.03-2 | Frame Assembly |
| 49 | PC477.03-2A | Frame Only |
| 51 | PC477.CF | Cloth Filter Assembly |
| 52 | PC477.PF | Cartridge Filter |
| 53 | PC455.05-1 | Hose 3m |
| 54 | PC455.05-2 | Connector |
| 55 | PC455.05-3 | Seal |
| 56 | PC455.05-4 | Elbow Connector |
| 57 | PC455.05-5 | Tube Extension (2Pcs) |
| 58 | PC455.05-6 | Connector |
| 59 | PC455.05-7 | Connector |
| 60 | PC455.05-8 | Crevice Tool |
| 61 | PC455.05-9 | Round Brush |
| 62 | PC477.07 | Brush Nozzle Complete |
| 63 | PC477.08 | Squeegee Nozzle Complete |
| -- | PC477AK1 | Front Mounted Squeegee (Not Shown) |
| -- | PC477.03-3 | Screw (M4x18) (Not Shown) |
| -- | PC477.04 | Top Head Assembly (Not Shown) |

NOTE: It is our policy to continually improve products and as such we reserve the right to alter data, specifications and component parts without prior notice. There may be alternative versions of this product, please contact us should you require this information.

IMPORTANT: No liability is accepted for incorrect use of product. Spare parts must be fitted by a competent person

WARRANTY: Guarantee is 12 months from purchase date, proof of which will be required for any claim.

Sealey Group, Kempson Way, Suffolk Business Park, Bury St Edmunds, Suffolk. IP32 7AR



01284 757500



01284 703534



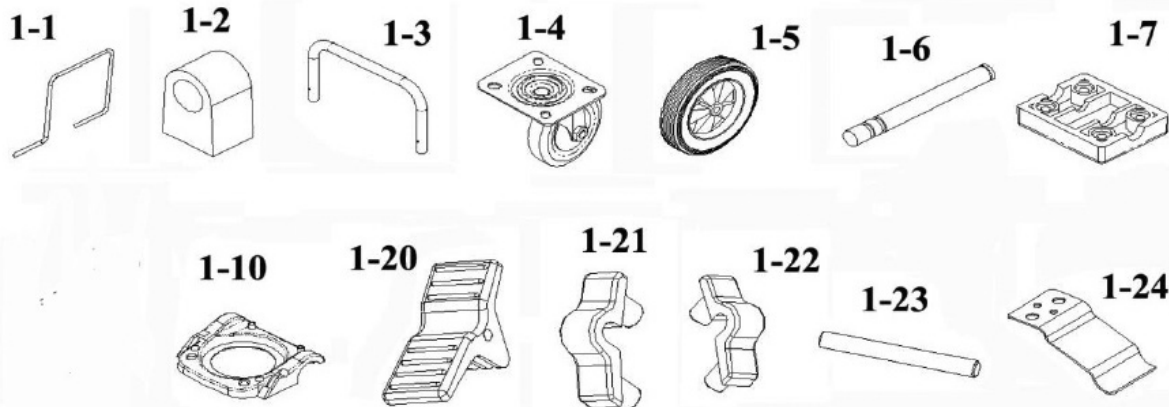
sales@sealey.co.uk



www.sealey.co.uk

Parts Information: Vacuum Cleaner Industrial Wet & Dry 77L Stainless Steel Drum with Swivel Emptying 2400WV Model No: PC477

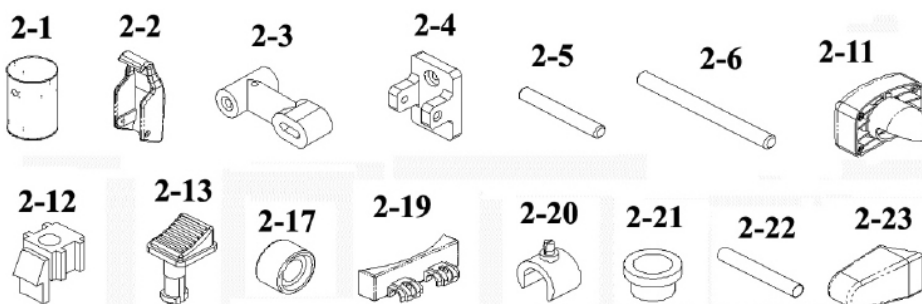
TROLLEY PARTS



| Item | Part No. | Description |
|------|-------------|----------------------------|
| 1.1 | PC477.01-1 | Handle |
| 1.2 | PC477.01-2 | Holder |
| 1.3 | PC477.01-5 | Support Handle |
| 1.4 | PC455.01-4 | Wheel,Castor (78x9x24x101) |
| 1.5 | PC477.01-10 | Fixed Wheel 240X45X12 |
| 1.6 | PC477.01-11 | Shaft |
| 1.7 | PC455.01-7 | Plate |

| Item | Part No. | Description |
|-------|-------------|----------------|
| 1.1 0 | PC477.01-17 | Trolley Base |
| 1.2 0 | PC455.01-20 | Pedal |
| 1.21 | PC455.01-21 | Holder (Left) |
| 1.22 | PC455.01-22 | Holder (Right) |
| 1.23 | PC455.01-23 | Pin |
| 1.24 | PC477.01-23 | Brake Plate |

Tank Parts



| Item | Part No. | Description |
|------|-------------|-----------------|
| 2.1 | PC477.02 | Tank Ass'y |
| 2.2 | PC455.02-2 | Tank Clip |
| 2.3 | PC455.02-3 | Holder |
| 2.4 | PC455.02-4 | Base |
| 2.5 | PC455.02-5 | Pin (Short) |
| 2.6 | PC455.02-6 | Pin (Long) |
| 2.11 | PC455.02-11 | Suction Coupler |
| 2.12 | PC455.02-12 | Holder |

| Item | Part No. | Description |
|------|-------------|---------------|
| 2.13 | PC455.02-13 | Button |
| 2.17 | PC455.02-17 | Holder |
| 2.19 | PC455.02-19 | Clip |
| 2.2 | PC455.02-20 | Fixed Holder |
| 2.21 | PC455.02-21 | Knob |
| 2.22 | PC455.02-22 | Handle |
| 2.23 | PC455.02-23 | Handle Holder |

NOTE: It is our policy to continually improve products and as such we reserve the right to alter data, specifications and component parts without prior notice. There may be alternative versions of this product, please contact us should you require this information.

IMPORTANT: No liability is accepted for incorrect use of product. Spare parts must be fitted by a competent person

WARRANTY: Guarantee is 12 months from purchase date, proof of which will be required for any claim.