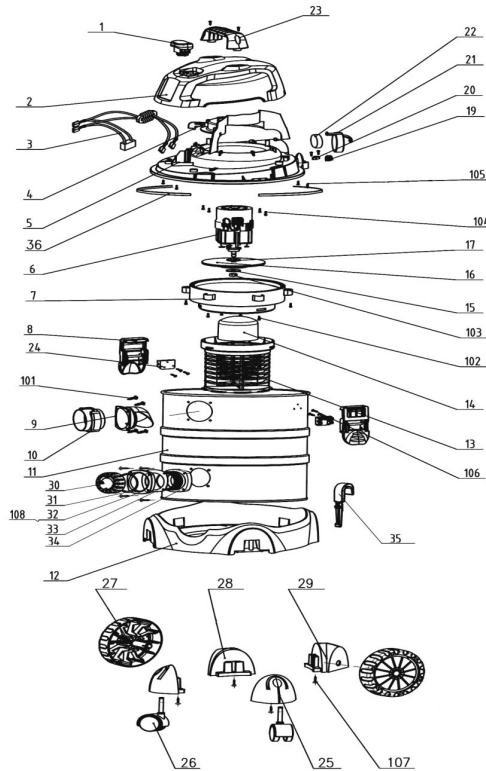




Parts Information:
Vacuum Cleaner Ind Wet & Dry 20ltr
1250W/110V Stainless Drum
Model No: PC200SD110V.V2



Item	Part No.	Description
1	PC200SDV2.01A	Switch (for 110v version)
2	PC200SD.V3-02	Upper cover
3	PC200SD.V3-03	Inductance set
4	PC200SD.V3-04	Air outlet
5	PC200SD.V3-05	Lower cover
6	PC200SDV2.06A	"Motor (Internal 110v)"
7	PC200SD.V3-07	Tray
8	PC310.06	Bin clip
9	PC200SD.V3-09	Hose inlet base
10	PC200SD.V3-10	Hose inlet
11	PC200SD.V3-11	Tank
12	PC200SD.V3-12	Base
13	PC200SD.V3-13	Basket
14	PC200SD.V3-14	Float
15	PC200SD.V3-15	Board
16	PC200SDV2.16A	Fan set (110v version)
17	PC200SD.V3-17	Lipped washer
19	PC200SD.V3-19	Cord sleeve
20	PC200SD.V3-20	Cord clamp
21	PC200SD.V3-21	Filter cover
22	PC200SD.V3-22	Foam filter

Item	Part No.	Description
23	PC200SD.V3-23	Handle
24	PC200SD.V3-24	Hook base
25	PC200SD.V3-26	Castor & foot support ass'y
26	PC200SD.V3-26	Castor & foot support ass'y
27	PC200SDV2.27A	Wheel (for 110v version)
28	PC200SD.V3-28	Wheel ass'y left (no.2)
29	PC200SD.V3-29	Wheel ass'y right (no.1)
30	PC200SDV2.30A	Waterspout cover (for 110v version)
31	PC200SD.V3-31	Drain inlet
32	PC200SD.V3-32	Waterspout seat
33	PC200SD.V3-33	Seal ring
34	PC200SD.V3-34	Waterspout
35	PC200SD.V3-35	Cord hook
36	PC200SD.V3-36	Foam ring
101	PC200SDV3.101	Rd head s/t screw m3.9 x 14
102	PC200SDV3.102	Rd head s/t screw m4x16
103	NLN6.SB	Nyloc nut m6 black (single)
104	PC200SDV3.104	Rd head s/t screw m4x12
105	PC200SDV3.105	Rd head s/t screw m4x16
106	PC200SDV3.106	Rd head s/t screw m3.5 x 8
107	PC200SDV3.107	Rd head s/t screw m4x12
108	PC200SDV3.108	Rd head s/t screw m3.9 x 14

NOTE: It is our policy to continually improve products and as such we reserve the right to alter data, specifications and component parts without prior notice.

IMPORTANT: No liability is accepted for incorrect use of product.

WARRANTY: Guarantee is 12 months from purchase date, proof of which will be required for any claim.

Sealey Group, Kempson Way, Suffolk Business Park, Bury St Edmunds, Suffolk. IP32 7AR



01284 757500



01284 703534



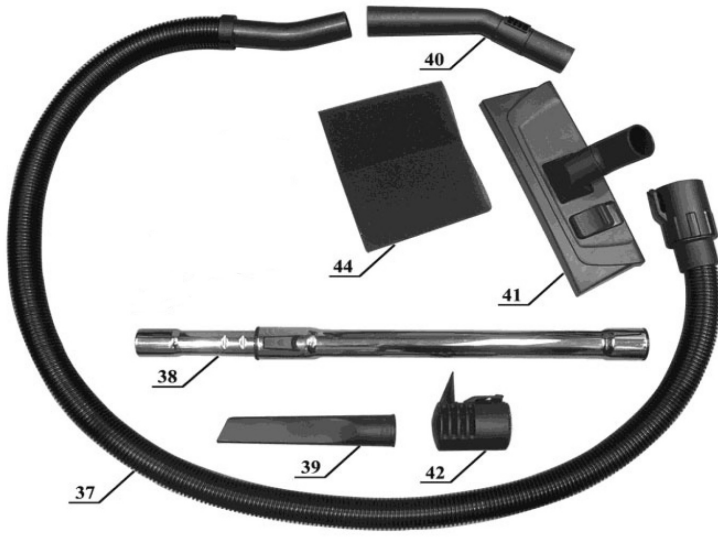
sales@sealey.co.uk



www.sealey.co.uk



Parts Information:
Vacuum Cleaner Ind Wet & Dry 20ltr
1250W/110V Stainless Drum
Model No: PC200SD110V.V2



Item	Part No.	Description
37	PC200SD.V3-37	Hose 1.5m
38	PC300SD.V3-53	Telescopic stainless tube
39	PC300SD.V3-54	Crevice tool
40	PC310.A05	Elbow tool (air flow regulator)
41	PC300SD.V3-56	Combo brush

Item	Part No.	Description
42	PC200SD.V3-42	Noise diffuser muffler
43	PC200FF10	Foam Filter for PC200 & PC300 Series Pack of 10
44	PC200.14	Foam filter (single)
--	PC200CFL	Locking Cartridge Filter for PC200 & PC300 Series (not shown)

NOTE: It is our policy to continually improve products and as such we reserve the right to alter data, specifications and component parts without prior notice.

IMPORTANT: No liability is accepted for incorrect use of product.

WARRANTY: Guarantee is 12 months from purchase date, proof of which will be required for any claim.

Sealey Group, Kempson Way, Suffolk Business Park, Bury St Edmunds, Suffolk. IP32 7AR



01284 757500



01284 703534



sales@sealey.co.uk



www.sealey.co.uk