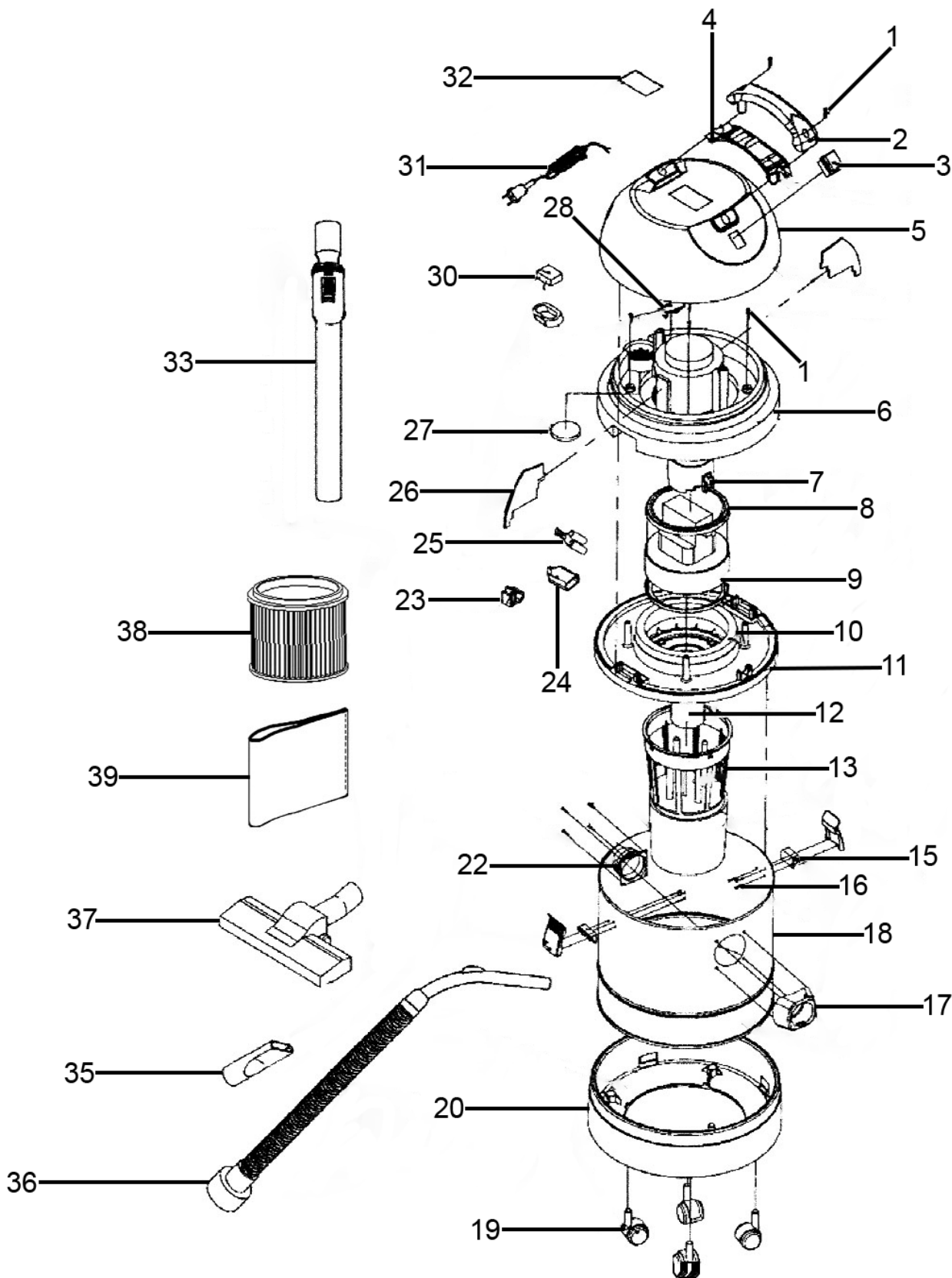




Parts Information:  
Vacuum Cleaner Industrial Wet/Dry 20ltr  
1250W/230V Stainless Bin  
Model No: PC200SD.V2



**NOTE:** It is our policy to continually improve products and as such we reserve the right to alter data, specifications and component parts without prior notice. There may be alternative versions of this product, please contact us should you require this information.

**IMPORTANT:** No liability is accepted for incorrect use of product. Spare parts must be fitted by a competent person

**WARRANTY:** Guarantee is 12 months from purchase date, proof of which will be required for any claim.

Sealey Group, Kempson Way, Suffolk Business Park, Bury St Edmunds, Suffolk. IP32 7AR



01284 757500



01284 703534



sales@sealey.co.uk



www.sealey.co.uk



Parts Information:  
**Vacuum Cleaner Industrial Wet/Dry 20ltr  
1250W/230V Stainless Bin  
Model No: PC200.V2**

Item	Part No.	Description
1	PC200.01	Screw
2	PC200.02	Handle, Upper
3	PC200.03	Switch, Power Rocker (c/w Cover)
4	PC200.04	Handle, Lower
5	PC200.05	Cover, Upper
6	PC200.06	Cover, Middle
7	PC200.07	Baffle
8	PC200.08	Sealed Ring
9	PC200SD.09	Motor
10	PC200.10	Foam Ring
11	PC200.11	Cover, Lower
12	PC200.12	Waterproof Cup
13	PC200.13	Basket
15	PC200SD.V3-24	Base, Hook
16	PC200SD.16	Screws
17	PC200SD.17	Base, Hose
18	PC200SD.18	Tank
19	PC200.18	Wheel, Swivel Castor
20	PC200SD.20	Base
22	PC200SD.22	Base, Hose

Item	Part No.	Description
23	PC200.22	Wire Slot
24	PC200.20	Socket
25	PC200.21	Wire Plug
26	PC200.23	Board
27	PC200.24	Filter
28	PC200.25	Clip
30	PC200.27	Capacitor
31	MC3CX1.0	Mains Cable
32	PC200SD.32	Label
33	PC300SD.V3-53	Tube, Telescopic
35	PC200.32	Nozzle, Narrow
36	PC200SD.36	Inlet Suction Hose (c/w Flow Switch)
37	PC200SD.37	Combo Nozzle
38	PC200CF	Cartridge Filter
39	PC200FF10	Foam Filter (Pack of 10)
--	PC310.06	Bin Clip (Not Shown)
--	PC200.14	Foam Filter (Not Shown)
--	PC200PB5	Dust Collection Bag (Pack of 5)(Not Shown)
--	VACHOSE5M	Hose (Not Shown)

**NOTE:** It is our policy to continually improve products and as such we reserve the right to alter data, specifications and component parts without prior notice. There may be alternative versions of this product, please contact us should you require this information.

**IMPORTANT:** No liability is accepted for incorrect use of product. Spare parts must be fitted by a competent person

**WARRANTY:** Guarantee is 12 months from purchase date, proof of which will be required for any claim.

**Sealey Group**, Kempson Way, Suffolk Business Park, Bury St Edmunds, Suffolk. IP32 7AR



01284 757500



01284 703534



sales@sealey.co.uk



www.sealey.co.uk