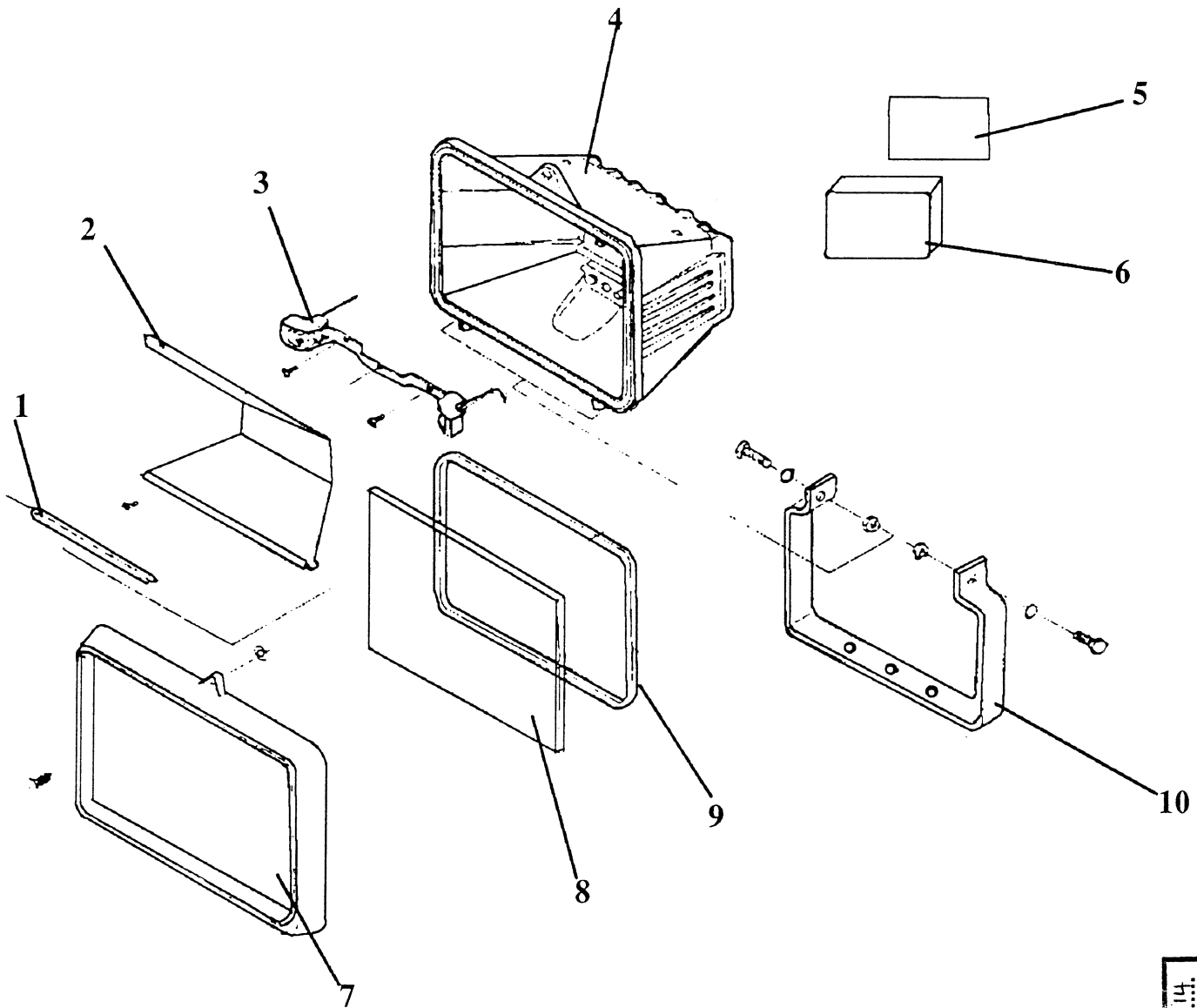


PARTS DIAGRAM FOR ML300C HALOGEN LAMP



<u>POS.</u>	<u>PART NO.</u>	<u>DESCRIPTION</u>
1	ML300/01	HALOGEN LAMP, 300 WATT 240 VOLT
2	ML300C/02	REFLECTOR
3	ML300C/03	LAMP HOLDER
4	ML300C/04	HOUSING
5	ML300C/05	COVER, TERMINAL BOX
6	ML300C/06	TERMINAL BOX
7	ML300C/07	COVER
8	ML300C/08	LENS
9	ML300C/09	GASKET, LENS
10	ML300C/10	BRACKET
	ML300C/FK	FIXING KIT (NUTS, BOLTS, SCREWS ETC.)

Original Date:	12-10-94
Issue Date:	12-10-94
Version Number:	0
Date Modified:	



JACK SEALEY LTD
 KEMPSON WAY, SUFFOLK BUSINESS PARK
 BURY ST EDMUNDS, SUFFOLK, IP32 7AR
 TEL: 01284 757500 FAX: 01284703534