

NOTE: It is our policy to continually improve products and as such we reserve the right to alter data, specifications and component parts without prior notice. There may be alternative versions of this product, please contact us should you require this information.

IMPORTANT: No liability is accepted for incorrect use of product. Spare parts must be fitted by a competent person

WARRANTY: Guarantee is 12 months from purchase date, proof of which will be required for any claim.



Parts Information:
Motorcycle Lift 450kg Capacity Hydraulic
Model No: MC455

| Item | Part No. | Description |
|------|----------|-------------------------------------------|
| 1 | MC455.01 | Rubber Grip |
| 2 | MC455.02 | Handle |
| 3 | MC455.03 | Brake Rope |
| 4 | MC455.04 | Bolt |
| 5 | MC455.05 | Safety Pin |
| 6 | MC455.06 | Head Joint |
| 7 | MC455.07 | Lock Nut |
| 8 | MC455.08 | Washer |
| 9 | MC455.09 | Link Rod |
| 10 | MC455.10 | Stepped Bolt |
| 11 | MC455.11 | Lifting Arm |
| 12 | MC455.12 | Bush |
| 13 | MC455.13 | Brake |
| 14 | MC455.14 | Hydraulic Unit (See Separate Diagram) |
| 15 | MC455.15 | Bolt |
| 16 | MSP510.S | Machine Screw Pan Head Phillips M5 x 10mm |
| 17 | MC455.17 | Foot Pedal |
| 18 | MC455.18 | Main Frame |
| 19 | MC455.19 | Hand Wheel |
| 20 | SN12.SD | Steel Nut M12, Domed |
| 21 | MC455.21 | Wheel, Swivel Castor |
| 22 | MC455.22 | Bolt |
| 23 | MC455.23 | Washer |

| Item | Part No. | Description |
|------|-----------|--------------------------|
| 24 | MC455.24 | Lock Nut |
| 25 | MC455.25 | Bolt |
| 26 | MC455.26 | Wheel, Fixed |
| 27 | MC455.27 | Washer |
| 28 | NLN10.S | Nyloc Nut M10 |
| 29 | MC455.29 | Lifting Arm |
| 30 | HHB1690.S | Hex Head Bolt M16 x 90mm |
| 31 | MC455.31 | U-Clamp |
| 32 | MC455.32 | Nut |
| 33 | SWM8.SB | Spring Washer M8 Black |
| 34 | MC455.34 | Bolt |
| 35 | MC455.35 | Fixed Vice |
| 36 | MC455.36 | Movable Vice |
| 37 | MC455.37 | Bolt |
| 38 | MC455.38 | Threaded Bracket |
| 39 | MC455.39 | Threaded Rod |
| 40 | MC455.40 | Platform |
| 41 | MC455-41 | Bolt |
| 42 | MC455-42 | Extendable Support |
| 43 | MC455-43 | Spring Washer |
| 44 | MC455-44 | Nut |
| 45 | MC455.45 | Leading Plate |
| 46 | MC455.46 | Baffle Plate |

NOTE: It is our policy to continually improve products and as such we reserve the right to alter data, specifications and component parts without prior notice. There may be alternative versions of this product, please contact us should you require this information.

IMPORTANT: No liability is accepted for incorrect use of product. Spare parts must be fitted by a competent person

WARRANTY: Guarantee is 12 months from purchase date, proof of which will be required for any claim.

Sealey Group, Kempson Way, Suffolk Business Park, Bury St Edmunds, Suffolk. IP32 7AR



01284 757500



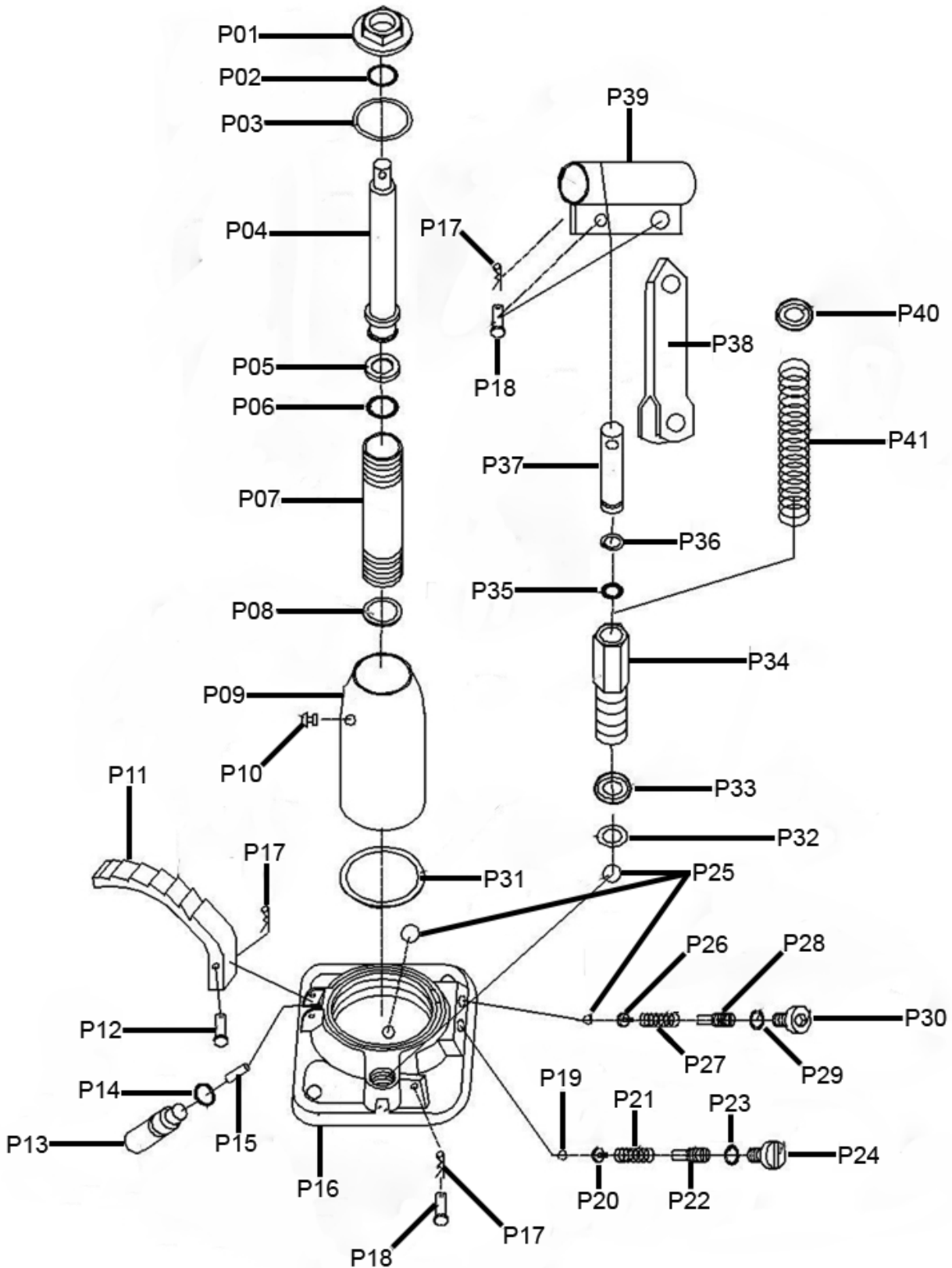
01284 703534



sales@sealey.co.uk



www.sealey.co.uk



NOTE: It is our policy to continually improve products and as such we reserve the right to alter data, specifications and component parts without prior notice. There may be alternative versions of this product, please contact us should you require this information.

IMPORTANT: No liability is accepted for incorrect use of product. Spare parts must be fitted by a competent person

WARRANTY: Guarantee is 12 months from purchase date, proof of which will be required for any claim.



Parts Information:
Motorcycle Lift 450kg Capacity Hydraulic
Model No: MC455

| Item | Part No. | Description |
|------|-----------|----------------------|
| P01 | MC455.P01 | Ram Cap |
| P02 | MC455.P02 | O-Ring |
| P03 | MC455.P03 | Seal Gasket, Top |
| P04 | MC455.P04 | Ram Assembly |
| P05 | MC455.P05 | Gasket |
| P06 | MC455.P06 | O-Ring |
| P07 | MC455.P07 | Cylinder |
| P08 | MC455.P08 | Seal Gasket, Lower |
| P09 | MC455.P09 | Oil Reservoir |
| P10 | MC455.P10 | Oil Filler Plug |
| P11 | MC455.P11 | Pedal, Release Valve |
| P12 | MC455.P12 | Pin |
| P13 | MC455.P13 | Valve Rod, Release |
| P14 | MC455.P14 | O-Ring |
| P15 | MC455.P15 | Pin, Release Valve |
| P16 | MC455.P16 | Base |
| P17 | MC455.P17 | Cotter Pin |
| P18 | MC455.P18 | Pin |
| P19 | MC455.P19 | Steel Ball |
| P20 | MC455.P20 | Spring Plunger |
| P21 | MC455.P21 | Spring |

| Item | Part No. | Description |
|------|-----------|------------------------|
| P22 | MC455.P22 | Screw |
| P23 | MC455.P23 | O-Ring |
| P24 | MC455.P24 | Screw |
| P25 | SB-6.0 | Steel Ball |
| P26 | MC455.P26 | Spring Plunger |
| P27 | MC455.P27 | Spring |
| P28 | MC455.P28 | Screw |
| P29 | MC455.P29 | Copper Washer |
| P30 | MC455.P30 | Screw |
| P31 | MC455.P31 | Seal Gasket, Lower |
| P32 | MC455.P32 | Copper Washer |
| P33 | MC455.P33 | Spring Retainer, Lower |
| P34 | MC455.P34 | Pump Cylinder |
| P35 | MC455.P35 | O-Ring |
| P36 | MC455.P36 | Seal |
| P37 | MC455.P37 | Piston Rod |
| P38 | MC455.P38 | Link |
| P39 | MC455.P39 | Handle Socket |
| P40 | MC455.P40 | Spring Retainer |
| P41 | MC455.P41 | Spring |

NOTE: It is our policy to continually improve products and as such we reserve the right to alter data, specifications and component parts without prior notice. There may be alternative versions of this product, please contact us should you require this information.

IMPORTANT: No liability is accepted for incorrect use of product. Spare parts must be fitted by a competent person

WARRANTY: Guarantee is 12 months from purchase date, proof of which will be required for any claim.

Sealey Group, Kempson Way, Suffolk Business Park, Bury St Edmunds, Suffolk. IP32 7AR



01284 757500



01284 703534



sales@sealey.co.uk



www.sealey.co.uk