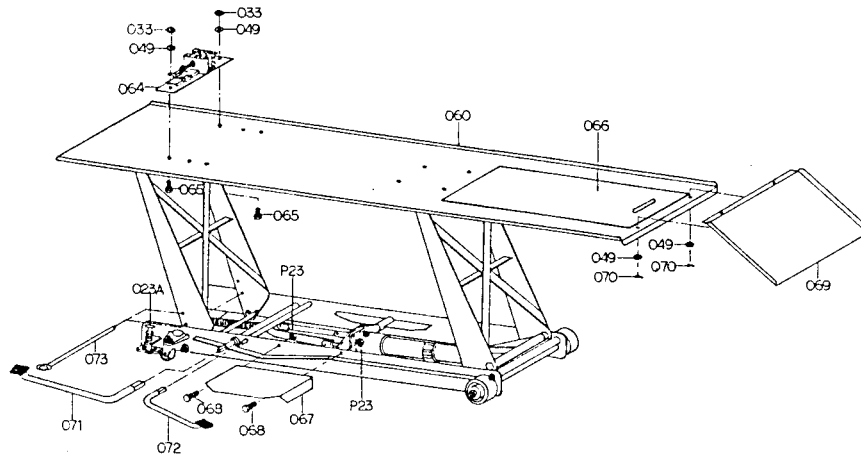


MC400

ASSEMBLY INSTRUCTION:

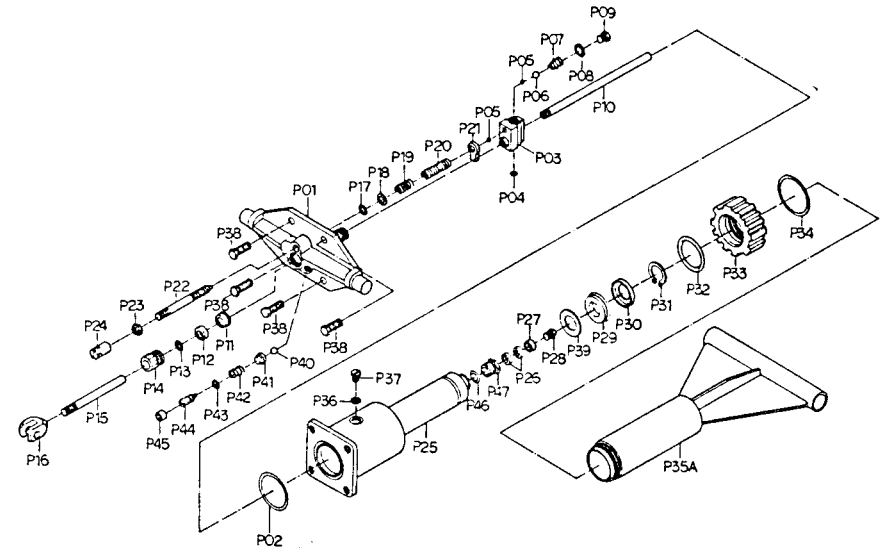
1. Attach Sliding Plate (066) to the Platform.
2. Attach Leading Plate (069) to the holes in the back of platform and use Washer (049) and Cotter Pin (070) to prevent from slipping off.
3. Put the Vise (064) to nominated place and fix it on the platform with M10 x 25L Bolt (065), Washer (049) and Nut (033).
4. Insert Lifting Foot Pedal (071) into Spindle of Pump Piston.
5. Insert Releasing Foot Pedal (072) into Spindle of Release Valve.
6. Attach Guarded Plate (067) to Frame of Releasing Foot Pedal and fix it with M8 x 20L Bolt (068) and Nut (p23).



PARTS NO	DESCRIPTION	Q'TY
P23	NUT	2
023A	ADJUSTING SCREWS ASS'Y	2
033	NUT	2
049	WASHER	4
060	PLATFORM	1
064	WISE	1
065	BOLT M10x25	2

PARTS NO	DESCRIPTION	Q'TY
066	SLIDING PLATE	1
067	GUARDED PLATE	1
068	BOLT M8x20	2
069	LEADING PLATE	1
070	COTTER PIN	2
071	FOOT PEDAL, LIFT	1
072	FOOT PEDAL, RELEASE	1
073	SET SPINDLE	1

EXPLODED DRAWING OF HYDRAULIC PUMP



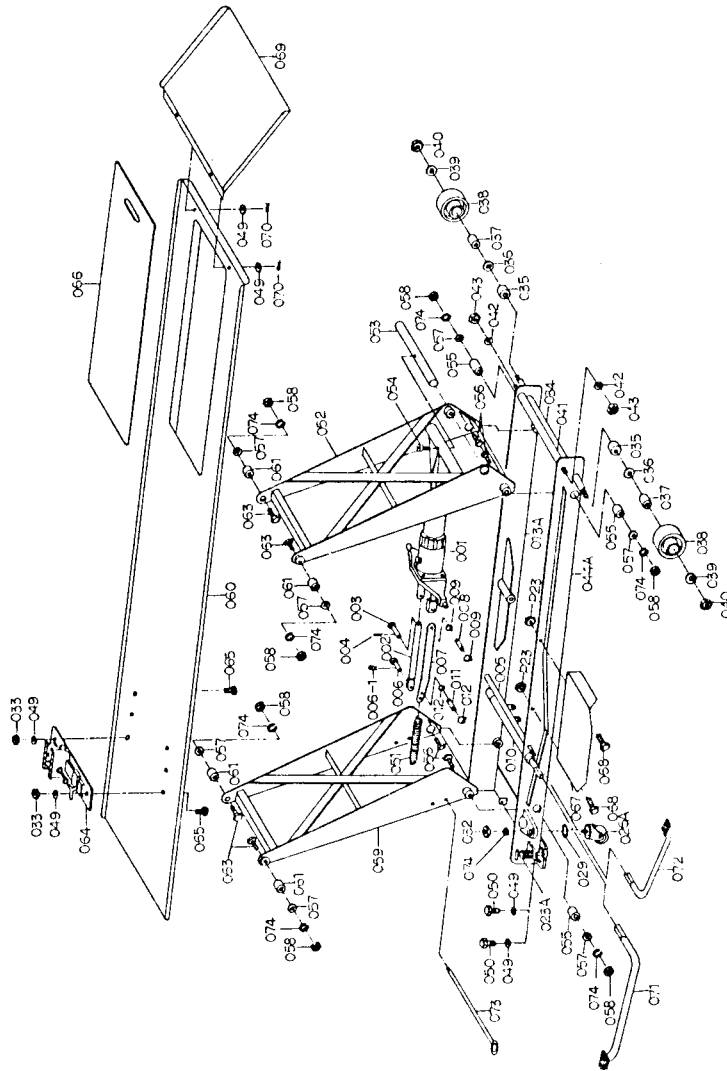
PARTS LIST OF HYDRAULIC PUMP

PARTS NO	DESCRIPTION	Q'TY
P01	BASE	1
P02	"O"-RING	1
P03	CHECK VALVE	1
P04	FILTER	1
P05	STEEL BALL 1/4"	2
P06	STEEL BALL 3/8"	1
P07	SPRING	1
P08	GASKET	1
P09	PLUG	1
P10	PIPELINE	1
P11	"U" SEAL	1
P12	WASHER	1
P13	"O"-RING	1
P14	REGULATING PLUG	1
P15	PUMP PISTON	1
P16	UNION NUT	1
P17	"O"-RING	1
P18	WASHER	1
P19	SPRING	1
P20	SPRING	1
P21	SET NUT	1
P22	RELEASE VALVE	1
P23	NUT M8	1
P24	UNION NUT	1

PARTS NO	DESCRIPTION	Q'TY
P25	RAM	1
P26	SEAL	2
P27	WASHER	1
P28	PLUG	1
P29	CUP SEAL	1
P30	CAP WASHER	1
P31	SNAP-RING"C.	1
P32	"O"-RING	1
P33	TOP NUT	1
P34	PACKING	1
P35A	CYLINDER ASS'Y	1
P36	SEAL	1
P37	AIR VENT VALVE	1
P38	BOLT M10x30	4
P39	BACK-UP RING	1
P40	STEEL BALL 1/4"	1
P41	SPRING. PLUNGER	1
P42	SPRING, SAFETY VALVE	1
P43	"O" RING	1
P44	SCREW SAFETY VALVE	1
P45	PLASTIC CAP SAFETY VALVE	1
P46	"O"-RING	1
P47	PLUG	1

PARTS LIST

EXPLODED DRAWING



PARTS NO	DESCRIPTION	Q'TY
001	HYDRAULIC PUMP ASS'Y	1
002	LINK	1
003	PIN	1
004	COTTER PIN	1
005	SPINDLE, RELEASE VALVE	1
006	PIN	1
006-1	CLIP	1
007	LINK	1
008	PIN	1
009	SNAP-RING "C"	2
010	SPINDLE, PUMP PISTON	1
011	PIN	1
012	SNAP-RING "C"	2
013A	FRAME, RH KIT	1
023A	ADJUSTING SCREWS ASS'Y	2
026A	CASTER FORK ASS'Y	2
029	BALL BEARING	2
032	NUT M12	2
033	NUT M10	2
034	FRONT SPINDLE	1
035	SPACING COLLAR	2
036	WASHER	2
037	BUSH, FRONT WHEEL	2
038	FRONT WHEEL	2
039	WASHER	2
040	NUT M20	2
041	LIFTING ARM STOP ROD	1
042	WASHER	2
043	NUT M16	2
044A	FRAME, LH KIT	1
049	WASHER	6

PARTS NO	DESCRIPTION	Q'TY
050	BOLT M10x16	2
051	RETURN SPRING	1
052	BACK LIFTING ARM	1
053	LIFTING ARM SPINDLE	1
054	BOLT	1
055	BUSH	4
056	BOLT M12x65	4
057	WASHER	8
058	NUT M12	8
059	FRONT LIFTING ARM	1
060	PLATFORM	1
061	BUSH	4
063	BOLT M12x40	4
064	WISE	1
065	BOLT M10x25	2
066	SLIDING PLATE	1
067	GUARDED PLATE	1
068	BOLT M8x20	2
P23	NUT M8	2
069	LEADING PLATE	1
070	COTTER PIN	2
071	FOOT PEDAL, LIFT	1
072	FOOT PEDAL, RELEASE	1
073	SET SPINDLE	1
074	SPRING WASHER	10

CAUTIONS:

1. The plug on the Jack should be changed to a vented plug (p37)
2. Before operation, be sure to fix the Motorcycle Lift on floor with Adjusting Screws (023A) to prevent the Lift from sliding during operation.
3. After placing the motorcycle onto the platform, be sure to use the Vise (064) to lock front wheel of the motorcycle to prevent it from slipping, tilting over, or falling.
4. After lifting, be sure to insert Set Spindle (073) into Front Lifting Arm to prevent from unintentional slow lowering.
5. To mark nominated capacity as 400Kgs (880 Lbs.) and maximum capacity as 450Kgs (990 Lbs.). Be sure to load under its limited capacity. Installed with Safety Valve to prevent overload.